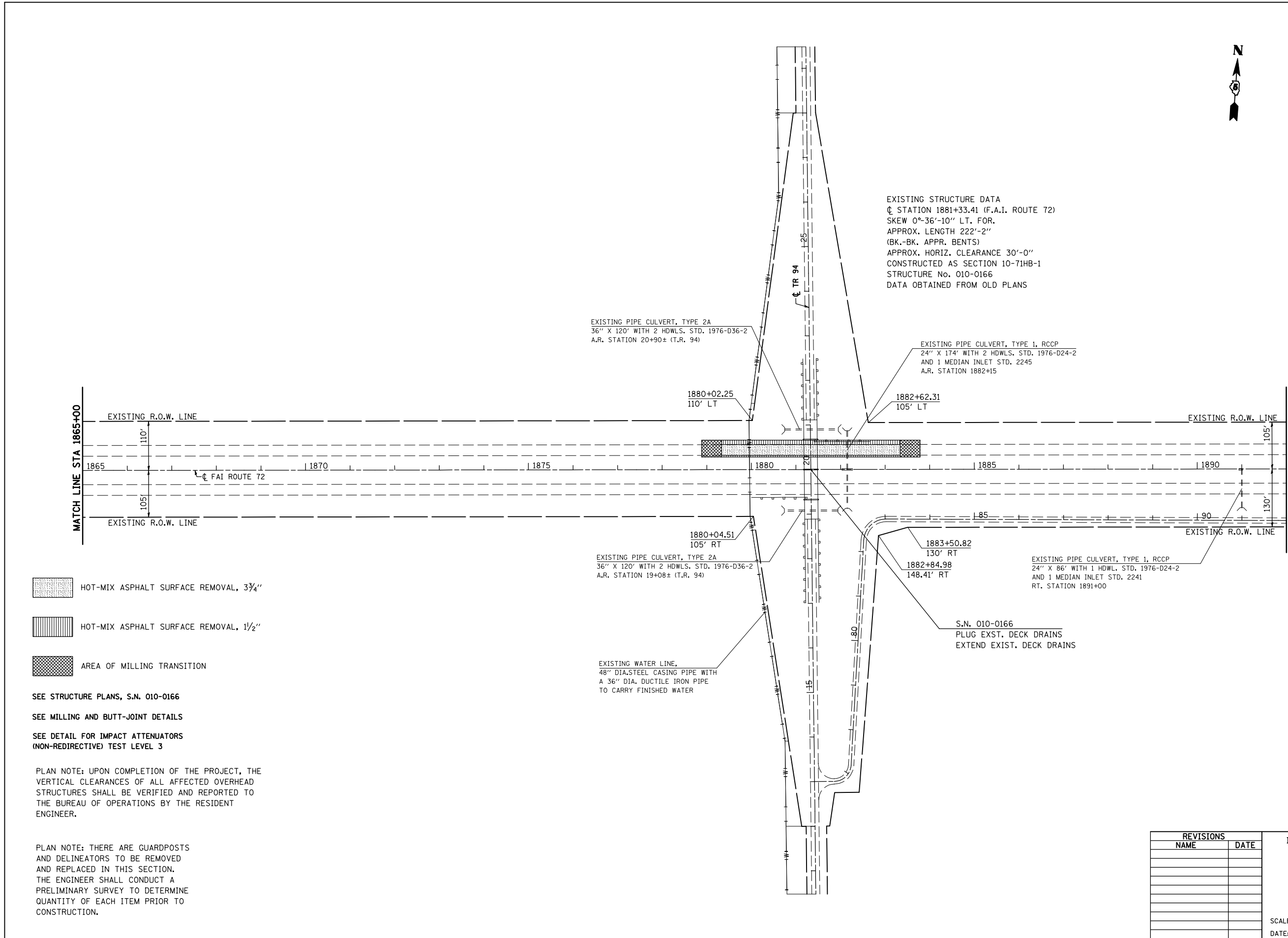


F.A.I. RTE.	SECTION	COUNTY	TOTAL SHEETS	SHEET NO.
72	*	**	104	55

STA. 1865+00	TO STA. 1892+00
FED. ROAD DIST. NO.	ILLINOIS FED. AID PROJECT

- 74(10-70)RS-3 & (10-71,73)RS-2
- PIATT & CHAMPAIGN
- CONTRACT NO. 70025



EXISTING STRUCTURE DATA
 CL STATION 1881+33.41 (F.A.I. ROUTE 72)
 SKEW 0°-36'-10" LT. FOR.
 APPROX. LENGTH 222'-2"
 (BK.-BK. APPR. BENTS)
 APPROX. HORIZ. CLEARANCE 30'-0"
 CONSTRUCTED AS SECTION 10-71HB-1
 STRUCTURE No. 010-0166
 DATA OBTAINED FROM OLD PLANS

EXISTING PIPE CULVERT, TYPE 2A
 36" X 120' WITH 2 HDWLS. STD. 1976-D36-2
 A.R. STATION 20+90± (T.R. 94)

EXISTING PIPE CULVERT, TYPE 1, RCCP
 24" X 174' WITH 2 HDWLS. STD. 1976-D24-2
 AND 1 MEDIAN INLET STD. 2245
 A.R. STATION 1882+15

EXISTING PIPE CULVERT, TYPE 2A
 36" X 120' WITH 2 HDWLS. STD. 1976-D36-2
 A.R. STATION 19+08± (T.R. 94)

EXISTING PIPE CULVERT, TYPE 1, RCCP
 24" X 86' WITH 1 HDWL. STD. 1976-D24-2
 AND 1 MEDIAN INLET STD. 2241
 RT. STATION 1891+00

EXISTING WATER LINE,
 48" DIA. STEEL CASING PIPE WITH
 A 36" DIA. DUCTILE IRON PIPE
 TO CARRY FINISHED WATER

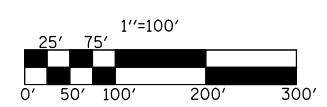
S.N. 010-0166
 PLUG EXST. DECK DRAINS
 EXTEND EXIST. DECK DRAINS

- HOT-MIX ASPHALT SURFACE REMOVAL, 3 3/4"
- HOT-MIX ASPHALT SURFACE REMOVAL, 1 1/2"
- AREA OF MILLING TRANSITION

SEE STRUCTURE PLANS, S.N. 010-0166
 SEE MILLING AND BUTT-JOINT DETAILS
 SEE DETAIL FOR IMPACT ATTENUATORS
 (NON-REDIRECTIVE) TEST LEVEL 3

PLAN NOTE: UPON COMPLETION OF THE PROJECT, THE VERTICAL CLEARANCES OF ALL AFFECTED OVERHEAD STRUCTURES SHALL BE VERIFIED AND REPORTED TO THE BUREAU OF OPERATIONS BY THE RESIDENT ENGINEER.

PLAN NOTE: THERE ARE GUARDPOSTS AND DELINEATORS TO BE REMOVED AND REPLACED IN THIS SECTION. THE ENGINEER SHALL CONDUCT A PRELIMINARY SURVEY TO DETERMINE QUANTITY OF EACH ITEM PRIOR TO CONSTRUCTION.



REVISIONS	
NAME	DATE

ILLINOIS DEPARTMENT OF TRANSPORTATION
PLAN VIEW
 F. A. I. ROUTE 72
 74(10,70)RS-3&(10-71,73)RS-2
 PIATT & CHAMPAIGN COUNTY
 SCALE: 1" = 100'
 DATE: JULY 2003
 DRAWN BY
 CHECKED BY