

| F.A.I. RTE. | SECTION | COUNTY | TOTAL SHEETS | SHEET NO. |
|-------------|---------|--------|--------------|-----------|
| 72 | * | ** | 104 | 65 |

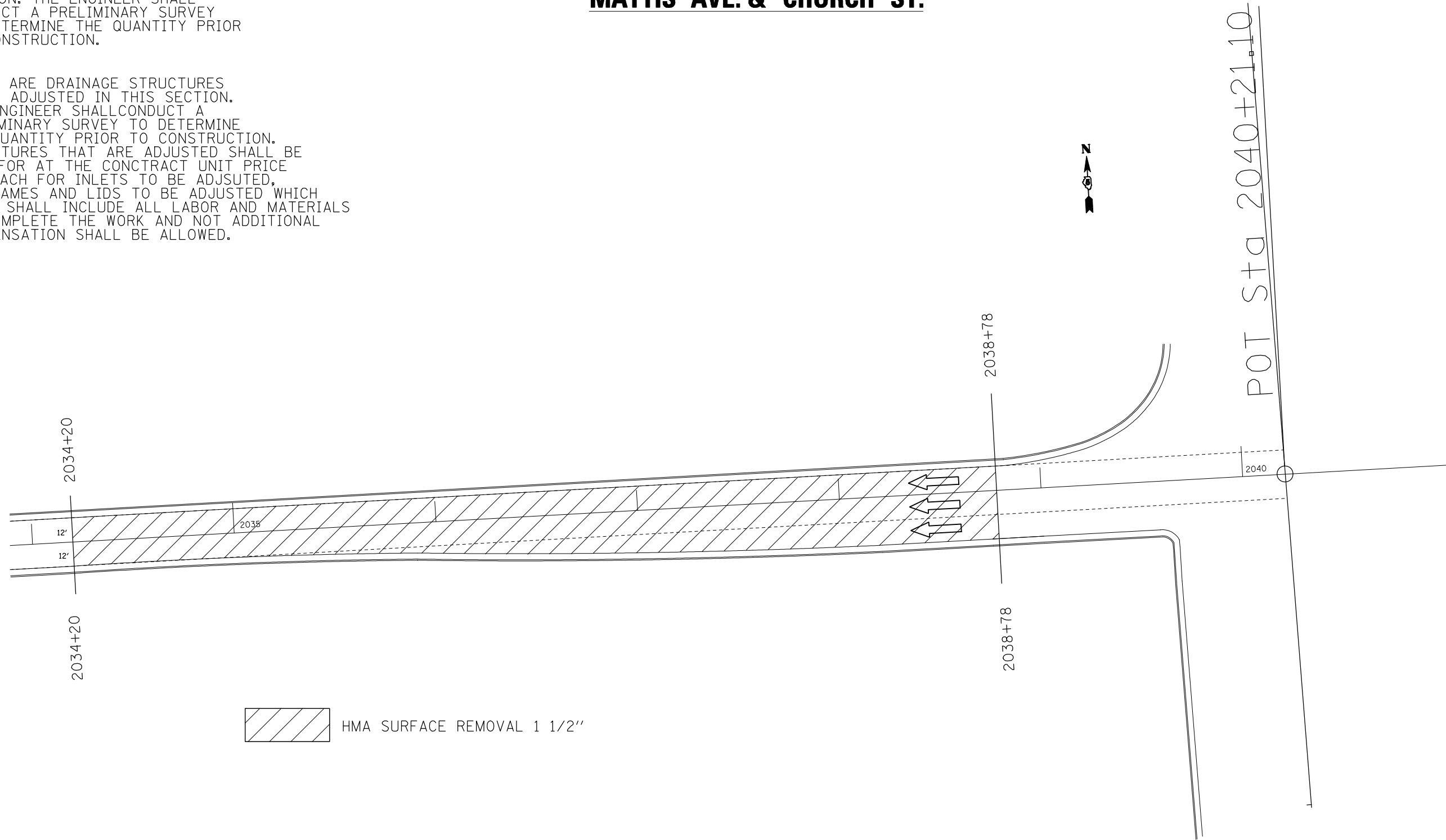
*74(10-70)RS-3 & (10-71,73)RS-2
** CHAMPAIGN & PIATT

PLAN NOTE(S):

THERE ARE AREAS OF CONCRETE CURB TO BE REPAIRED IN THIS SECTION. THE ENGINEER SHALL CONDUCT A PRELIMINARY SURVEY TO DETERMINE THE QUANTITY PRIOR TO CONSTRUCTION.

THERE ARE DRAINAGE STRUCTURES TO BE ADJUSTED IN THIS SECTION. THE ENGINEER SHALL CONDUCT A PRELIMINARY SURVEY TO DETERMINE THE QUANTITY PRIOR TO CONSTRUCTION. STRUCTURES THAT ARE ADJUSTED SHALL BE PAID FOR AT THE CONTRACT UNIT PRICE PER EACH FOR INLETS TO BE ADJUSTED, OR FRAMES AND LIDS TO BE ADJUSTED WHICH PRICE SHALL INCLUDE ALL LABOR AND MATERIALS TO COMPLETE THE WORK AND NOT ADDITIONAL COMPENSATION SHALL BE ALLOWED.

MATTIS AVE. & CHURCH ST.



 HMA SURFACE REMOVAL 1 1/2"

PLOT DATE = 4/13/2009
FILE NAME = c:\p\p-00-k\p\p\DOT\SHERER\JM\48112995\700250\detail11\Sherer.dgn
PLOT SCALE = 63.4710' / IN.
USER NAME = shererjm

ILLINOIS DEPARTMENT OF TRANSPORTATION
MATTIS AVE. & CHURCH ST.

F.A.I. ROUTE 72
SECTION 74(10-70)RS-3 & (10-71,73)RS-2
CHAMPAIGN & PIATT COUNTY

SCALE: NONE DRAWN BY: MLB
DATE: 04/01/2009 CHECKED BY: