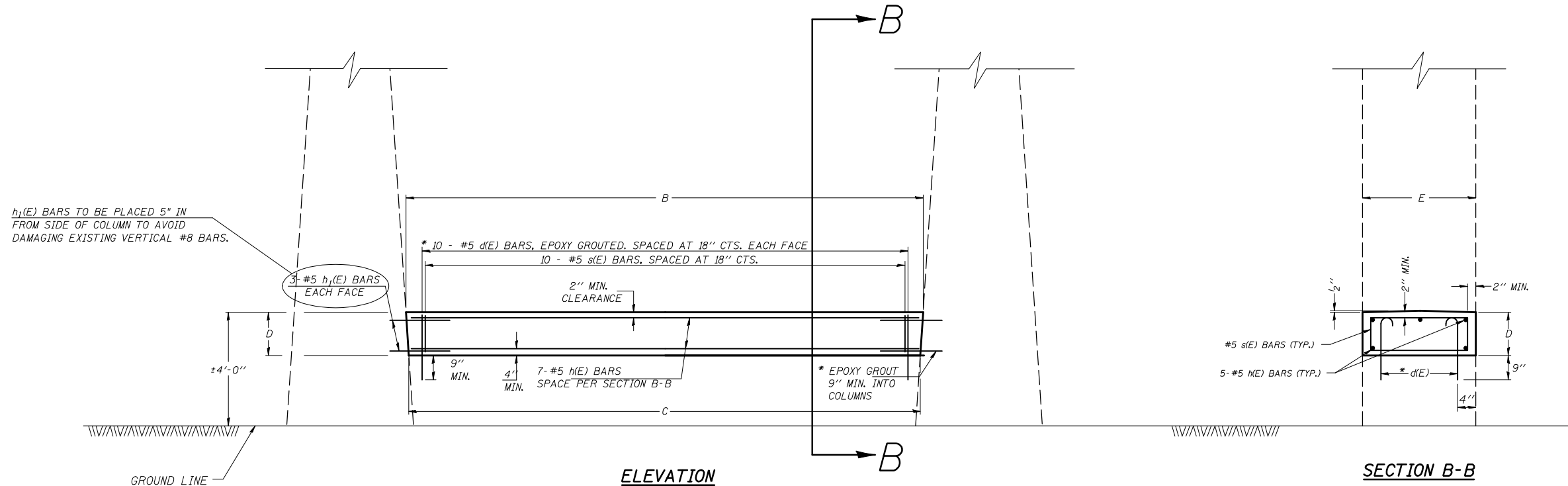


F.A.I. RTE.	SECTION	COUNTY	TOTAL SHEETS	SHEET NO.
72	.	..	104	77

•74(10-70)RS-3 & (10-71,73)RS-2
•• CHAMPAIGN & PIATT

S.N. 074-0007 CENTER PIER



GENERAL NOTES

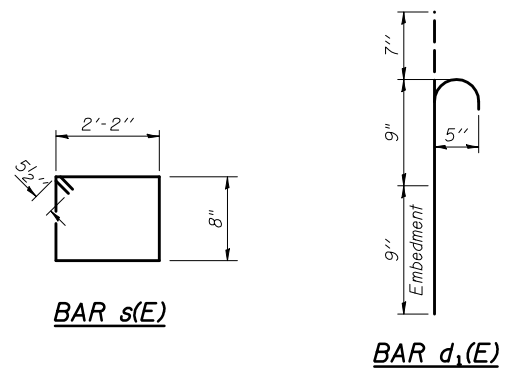
PLAN DIMENSIONS AND DETAILS RELATIVE TO EXISTING PLANS ARE SUBJECT TO NOMINAL CONSTRUCTION VARIATIONS. THE CONTRACTOR SHALL FIELD VERIFY EXISTING DIMENSIONS AND DETAILS AFFECTING NEW CONSTRUCTION AND MAKE NECESSARY APPROVED ADJUSTMENTS PRIOR TO CONSTRUCTION OR ORDERING OF MATERIALS. SUCH VARIATIONS SHALL NOT BE CAUSE FOR ADDITIONAL COMPENSATION FOR A CHANGE IN SCOPE OF THE WORK, HOWEVER, THE CONTRACTOR WILL BE PAID FOR THE QUANTITY ACTUALLY FURNISHED AT THE UNIT PRICE BID FOR THE WORK.

THE COST OF EPOXY GROUTING BARS SHALL BE INCLUDED WITH REINFORCEMENT BARS (EPOXY COATED).

REINFORCEMENT BARS SHALL CONFORM TO THE REQUIREMENTS OF ASTM A706 GR 60

REINFORCEMENT BARS DESIGNATED (E) SHALL BE EPOXY COATED.

* EPOXY GROUT BARS IN 9" MIN. HOLES ACCORDING TO ARTICLE 584 OF THE STANDARD SPECIFICATIONS.



DIMENSION TABLE

LOCATION	B	C	D	E
CENTER PIER	14'-8"	14'-7"	1'-0"	2'-6"

BAR TABLE

BAR	QTY.	SIZE	LENGTH	SHAPE
$d_1(E)$	20	#5	2'-1"	U
$s(E)$	10	#5	6'-7"	Square
$h_1(E)$	5	#5	14'-3"	Bar
$h_1(E)$	12	#5	2'-9"	Bar

BILL OF MATERIALS

ITEM	UNIT	QUANTITY
CONCRETE STRUCTURES	CU. YD.	1.3
REINFORCEMENT BARS, EPOXY COATED	LB.	221.0

ILLINOIS DEPARTMENT OF TRANSPORTATION
DETAIL FOR CRASHWALL EXTENSION

F.A.I. ROUTE 72
SECTION 74(10-70)RS-3 & (10-71,73)RS-2
CHAMPAIGN & PIATT COUNTY

SCALE: NONE DRAWN BY: MLB
DATE: 04/01/2009 CHECKED BY: