

F.A.I. RTE.	SECTION	COUNTY	TOTAL SHEETS	SHEET NO.
74	(57-22B-1)BR	MCLEAN	46	1
		ILLINOIS	CONTRACT NO. 70721	

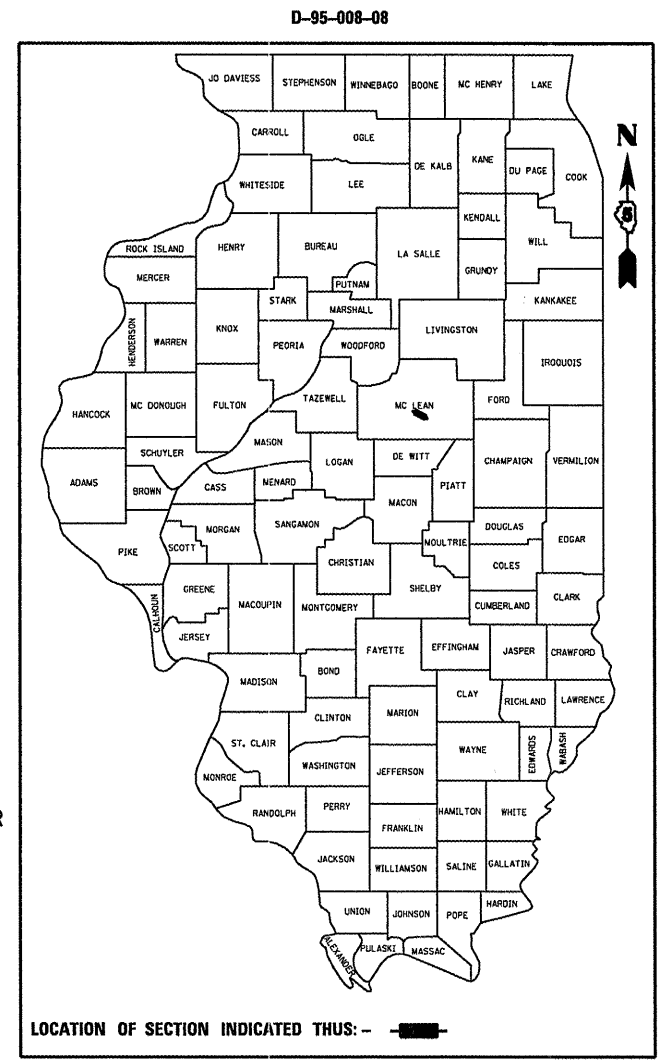
STATE OF ILLINOIS  
DEPARTMENT OF TRANSPORTATION  
DIVISION OF HIGHWAYS  
**PROPOSED  
HIGHWAY PLANS**

FOR INDEX OF SHEETS, SEE SHEET NO. 2

FAI ROUTE 74 (WB)  
SECTION (57-22B-1)BR

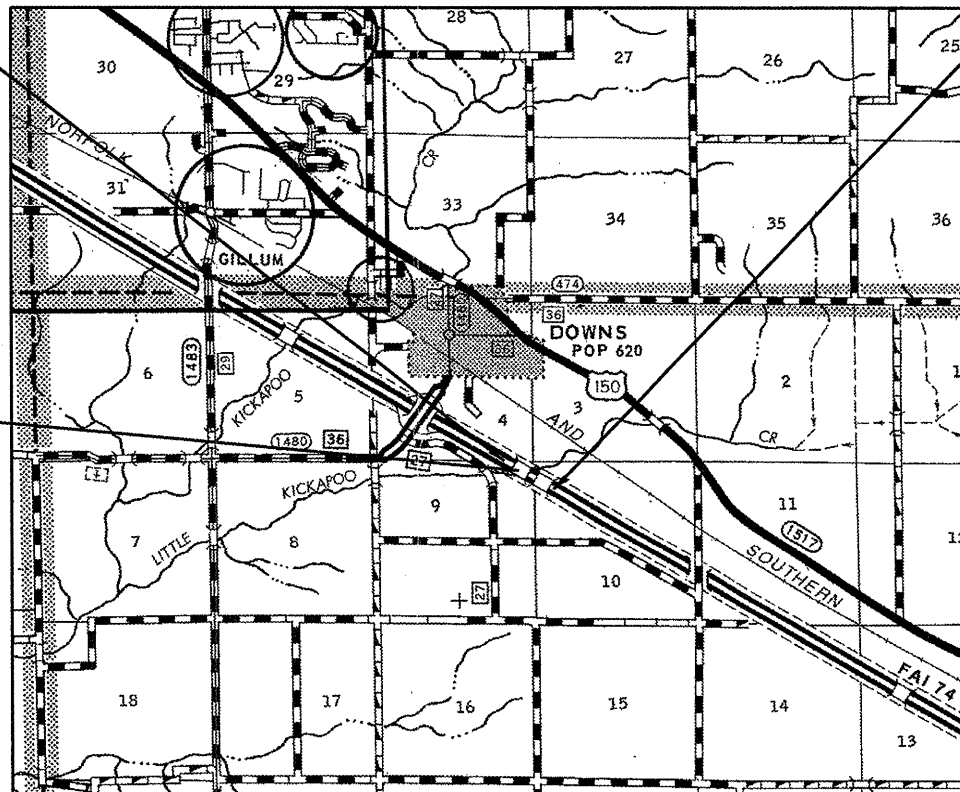
LITTLE KICKAPOO CREEK 7.6 MI E OF US 51  
BRIDGE REHABILITATION  
MCLEAN COUNTY

C-95-008-08  
R3E, 3RD P.M.



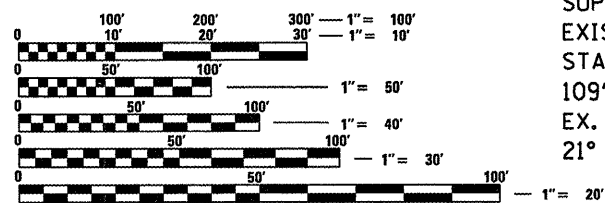
SECTION (57-22B-1)BR  
PROJECT BEGINS  
STA. 1126+00.00

SECTION (57-22B-1)BR  
PROJECT ENDS  
STA. 1128+50.00



SUPERSTRUCTURE REPLACEMENT  
EXISTING S.N. 057-0129 (I-74 WB)  
STA. 1127+12.92  
109'-6" BK. TO BK. ABUT.  
EX. 42'-0" 0-0, PR. 43'-2" 0-0  
21° SKEW LEFT FORWARD

TRAFFIC:  
ADT(2008) = 20,400  
P.C. = 60.2%  
S.U. = 4.8%  
M.U. = 35.0%



FULL SIZE PLANS HAVE BEEN PREPARED USING STANDARD ENGINEERING SCALES. REDUCED SIZED PLANS WILL NOT CONFORM TO STANDARD SCALES. IN MAKING MEASUREMENTS ON REDUCED PLANS, THE ABOVE SCALES MAY BE USED.

J.U.L.I.E.  
JOINT UTILITY LOCATION INFORMATION FOR EXCAVATION  
1-800-892-0123  
OR 811  
DOWNS TOWNSHIP

GROSS LENGTH = 250.00 FT. = 0.047 MILE  
NET LENGTH = 250.00 FT. = 0.047 MILE

PROJECT ENGINEER: NANCY FASIG (217) 465-4181  
SQUAD LEADER: JASON STULTS

CONTRACT NO. 70721

STATE OF ILLINOIS  
DEPARTMENT OF TRANSPORTATION  
DIVISION OF HIGHWAYS

SUBMITTED 3/3 20 09

*Joseph R. Gaven*  
DEPUTY DIRECTOR OF HIGHWAYS, REGION ENGINEER

May 1, 20 09  
*Charles G. Draerwell*  
ENGINEER OF DESIGN AND ENVIRONMENT

May 1, 20 09  
*Christine M. Reed*  
DIRECTOR OF HIGHWAYS, CHIEF ENGINEER

**PRINTED BY THE AUTHORITY  
OF THE STATE OF ILLINOIS**