

STATE OF ILLINOIS
DEPARTMENT OF TRANSPORTATION

GENERAL NOTES

Layout of slope protection system may be varied in the field to suit ground conditions as directed by the Engineer.

Reinforcement bars shall conform to the requirements of ASTM A 706 Grade 60. See Special Provisions.

Reinforcement bars designated (E) shall be epoxy coated.

Plan dimensions and details relative to existing plans are subject to nominal construction variations. The Contractor shall field verify existing dimensions and details effecting new construction and make necessary approved adjustments prior to construction or ordering of materials. Such variations shall not be cause for additional compensation for a change in the scope at the work, however, the Contractor will be paid for the quantity actually furnished at the unit price bid for the work.

Repairs of abutments and pier shall be completed prior to placement of the new beams. Slip forming of the parapets is not allowed.

Saw cut grooving of the approach pavement is required. See Roadway Plan. The Contractor shall submit Structural Assessment Report(s) as required for Contractor's means and methods of construction. See Special Provisions Current Ratings on File for Existing Structure

Inventory: HS 30-6
Operating: HS 49.5

Live Load Restrictions: No

Inventory and Operating Ratings and Live Load Restrictions are provided for information only. Inventory and Operating Ratings are based on HS loading and configurations. Live Load Restrictions are based on Illinois legal loads and configurations. The Ratings and Live Load Restrictions are not necessarily representative of capacities to support the Contractor's equipment.

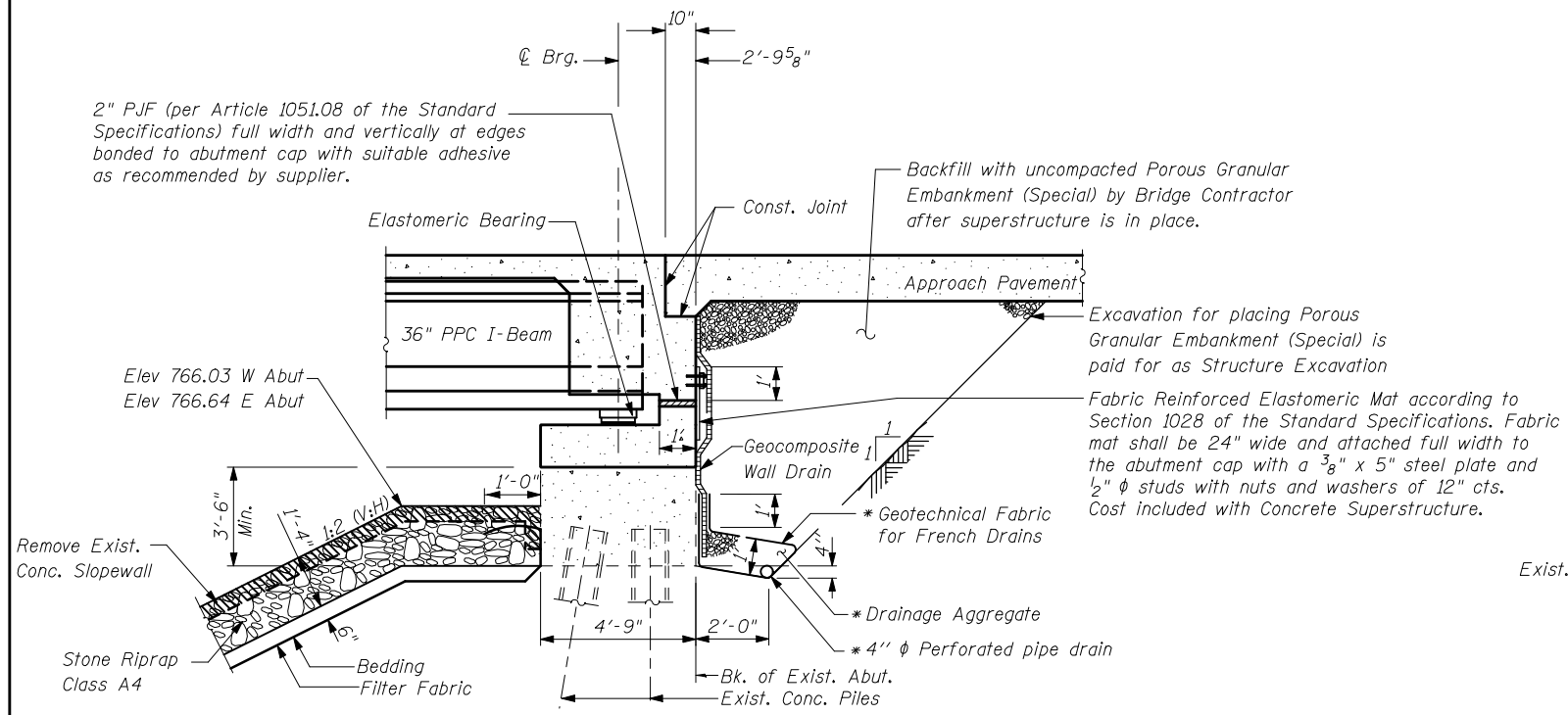
INDEX OF SHEETS

- 1 GENERAL PLAN AND ELEVATION
- 2 GENERAL DATA
- 3-4 TOP OF SLAB ELEVATIONS
- 5-6 TOP OF APPROACH PAVEMENT ELEVATIONS
- 7 STAGE CONSTRUCTION DETAILS AND TEMPORARY SHEET PILING
- 8 DECK REINFORCEMENT
- 9 SUPERSTRUCTURE AND PARAPET DETAILS
- 10 ABUTMENT DIAPHRAGM DETAILS
- 11 PIER DIAPHRAGM DETAILS
- 12 FRAMING AND PERMANENT BRACING DETAILS
- 13 36" PPC I-BEAM
- 14 PPC I-BEAM DETAILS
- 15 ELASTOMERIC BEARING DETAILS
- 16 WEST ABUTMENT
- 17 EAST ABUTMENT
- 18 ABUTMENT DETAILS
- 19 PIER 1 DETAILS
- 20 WEST ABUTMENT CONCRETE REMOVAL
- 21 EAST ABUTMENT CONCRETE REMOVAL
- 22 ABUTMENT CONCRETE REPAIR
- 23 PIER CONCRETE REPAIR
- 24 BAR SPLICER ASSEMBLY DETAILS
- 25 TEMPORARY CONCRETE BARRIER
- 26 DRAINAGE SCUPPER DS-12

TOTAL BILL OF MATERIAL

ITEM	UNIT	SUPER	SUB	TOTAL
Porous Granular Embankment, Special	Cu.Yd.		216	216
Stone Riprap, Class A4	Sq.Yd.		1102	1102
Filter Fabric	Sq.Yd.		1102	1102
Removal of Existing Superstructures	Each	1		1
Structure Excavation	Cu.Yd.		222	222
Bridge Deck Grooving	Sq.Yd.	462		462
Protective Coat	Sq.Yd.	574		574
Concrete Structures	Cu.Yd.		31.7	31.7
Concrete Superstructure	Cu.Yd.	194.1		194.1
Pipe Underdrains for Structures, 4 inch	Foot		178	178
Geocomposite Wall Drain	Sq.Yd.		103	103
Reinforcement Bars, Epoxy Coated	Pound	39940	5180	45120
Drainage Scupper DS-12	Each	2		2
Name Plates	Each	1		1
Concrete Removal	Cu.Yd.		47.4	47.4
Epoxy Crack Injection	Foot		51	51
Structural Repair of Concrete (Depth Equal to or Less than 5")	Sq.Ft.		136	136
Slope Wall Removal	Sq.Yd.		794	794
Furnishing and Erecting Precast Prestressed Concrete I Beams, 36"	Foot	623		623
Elastomeric Bearing Assembly Type I	Each	12		12
Bar Splicers	Each	470	18	488
Temporary Sheet Piling	Sq.Ft.		400	400
Diamond Grinding (Bridge Section)	Sq.Yd.	678		678
Anchor Bolts, 1"	Each	24		24
Anchor Bolts, 1/2"	Each	4		4

* Includes 30' Bridge Approach Pavement



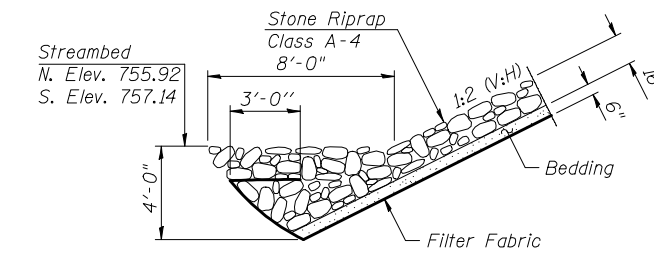
SECTION THRU SEMI-INTEGRAL ABUTMENT

(Horiz. dim. @ Rt. L's)

* Included in the cost of Pipe Underdrains for Structures.

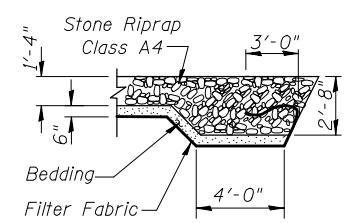
Note:

All drainage system components shall extend to 2'-0" from the end of each wingwall except an outlet pipe shall extend until intersecting with the side slopes. The pipes shall drain into concrete headwalls. (See Article 601.05 of the Standard Specifications and Highway Standard 601101).



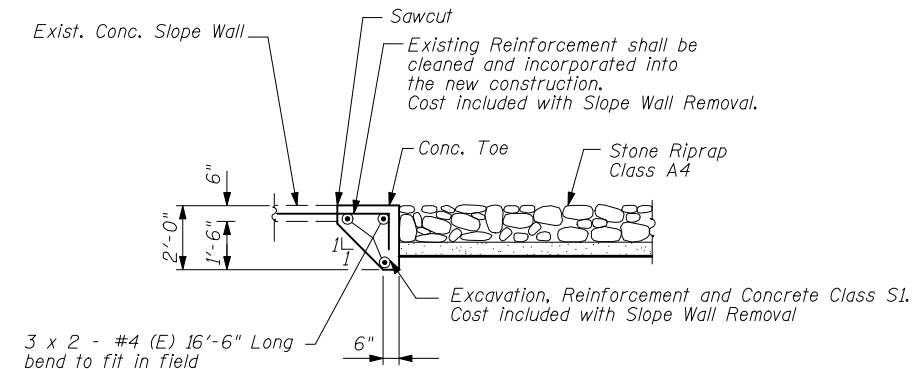
SECTION B-B

(Toe Treatment)



SECTION A-A

(Flank Treatment)



SECTION C-C

(Concrete Toe)

GENERAL DATA
STRUCTURE NO. 057-0129

SHEET NO. 2	F.A.I. RTE.	SECTION	COUNTY	TOTAL SHEETS	SHEET NO.
	74	(57-22B-1)BR	Mc LEAN	46	12
26 SHEETS	CONTRACT NO. 70721				
FED. ROAD DIST. NO.		ILLINOIS	FED. AID PROJECT		

THE UPCHURCH GROUP, INC.