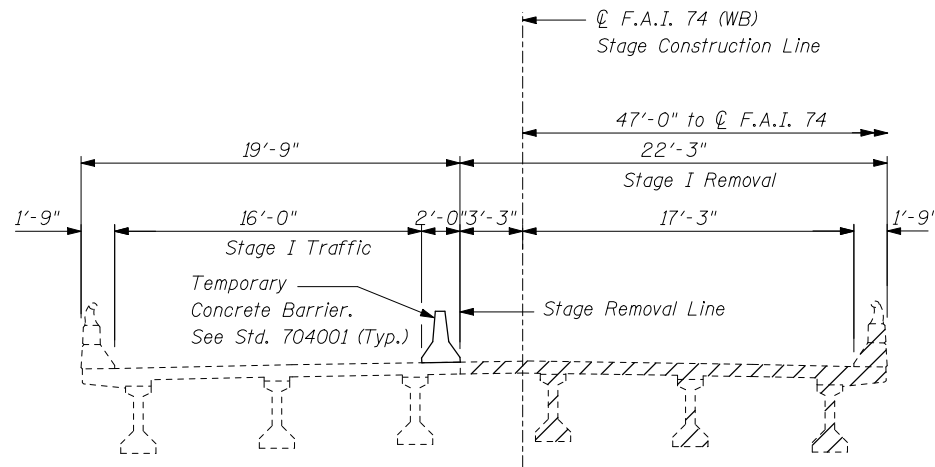
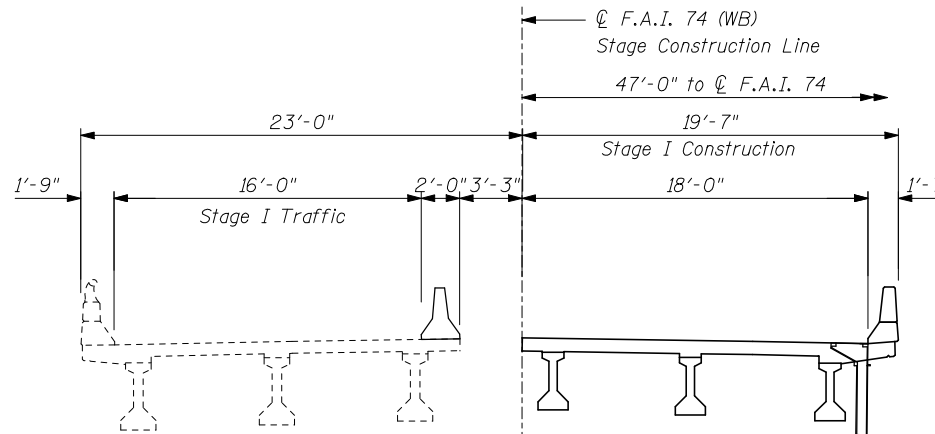


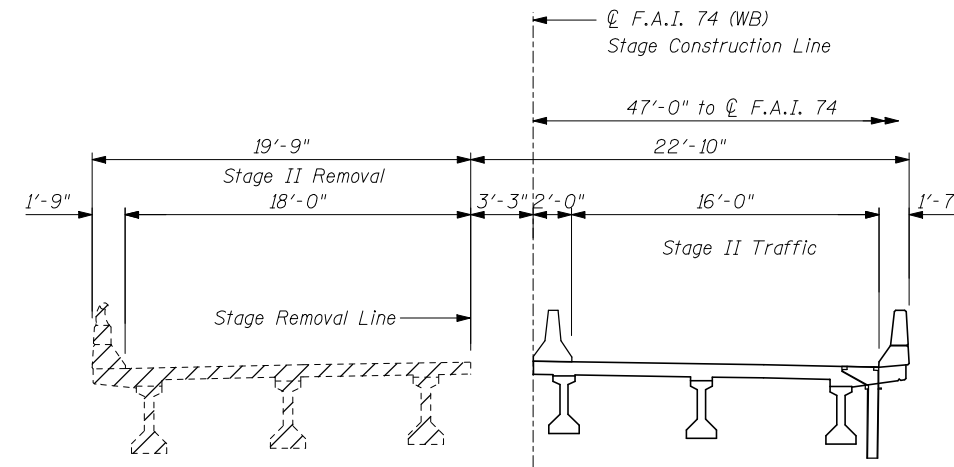
STATE OF ILLINOIS  
DEPARTMENT OF TRANSPORTATION



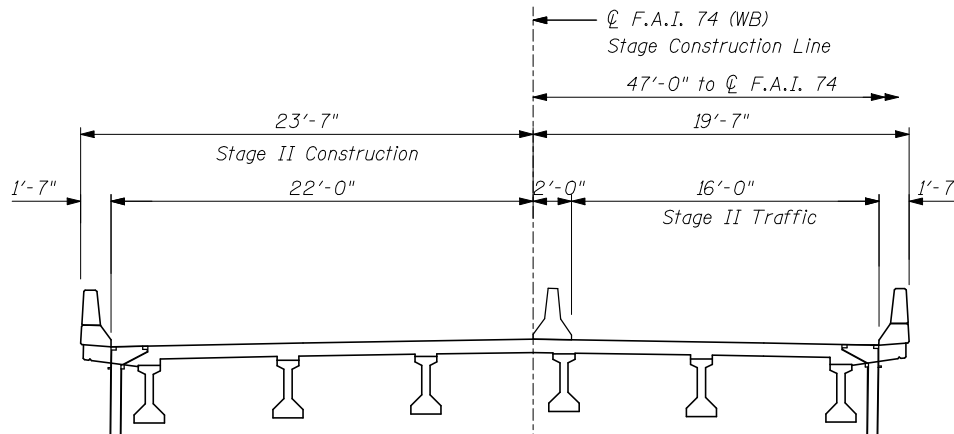
**STAGE I REMOVAL**  
(Looking East)



**STAGE I CONSTRUCTION**  
(Looking East)

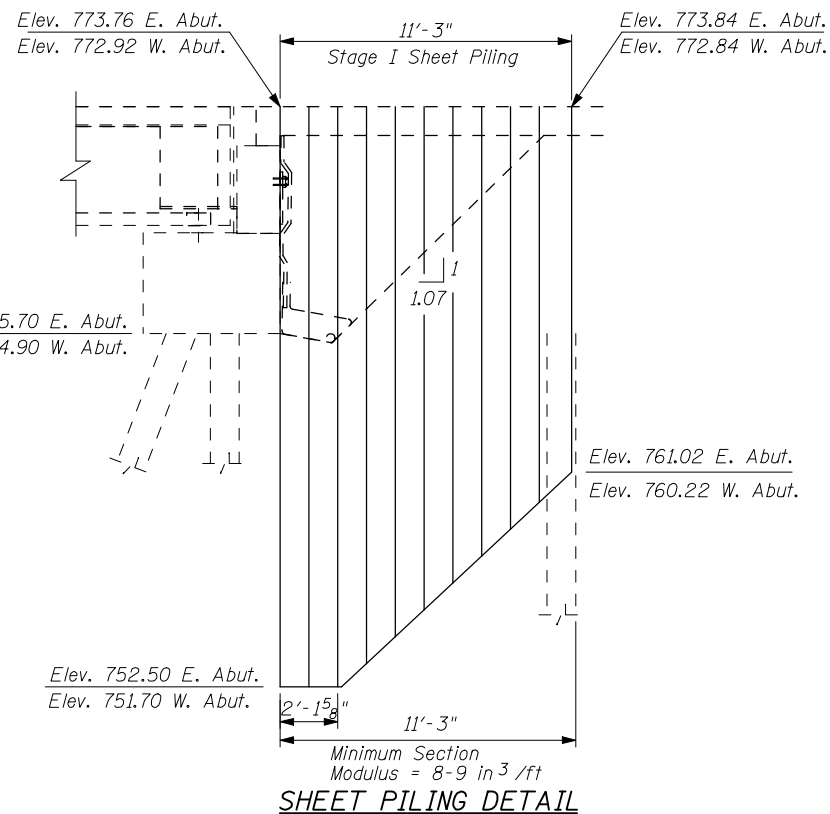


**STAGE II REMOVAL**  
(Looking East)

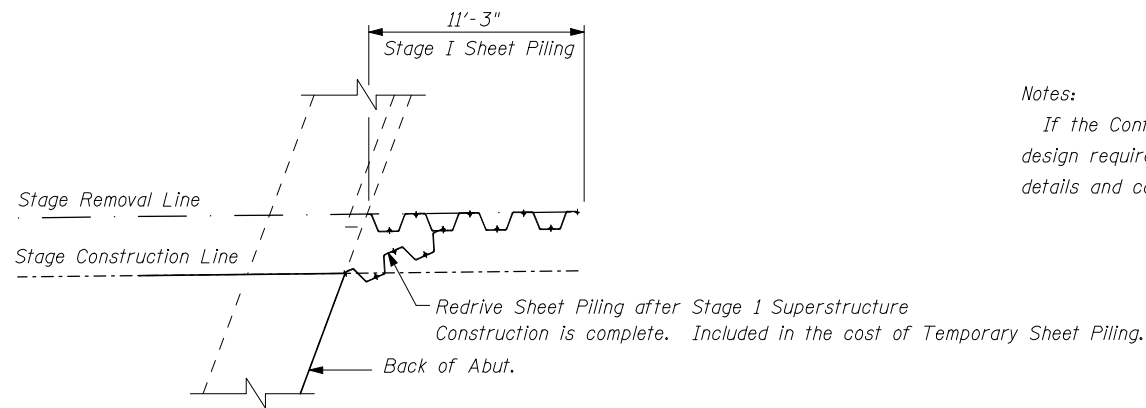


**STAGE II CONSTRUCTION**  
(Looking East)

Notes:  
1. Hatched Area Indicates Removal of Existing Structures.



**SHEET PILING DETAIL**



**SHEET PILING DETAIL - PLAN VIEW**

Notes:  
If the Contractor chooses to alter the temporary cantilevered sheet piling design requirements shown on the Plans, a design submittal including plan details and calculations will be required for review and acceptance by the Engineer.

**STAGE CONSTRUCTION DETAILS AND  
TEMPORARY SHEET PILING  
STRUCTURE NO. 057-0129**

SHEET NO. 7 26 SHEETS	F.A.I. RTE. 74	SECTION (57-22B-1)BR	COUNTY Mc LEAN	TOTAL SHEETS 46	SHEET NO. 17
	CONTRACT NO. 70721				
FED. ROAD DIST. NO.		ILLINOIS	FED. AID PROJECT		

**THE UPCHURCH GROUP, INC.**