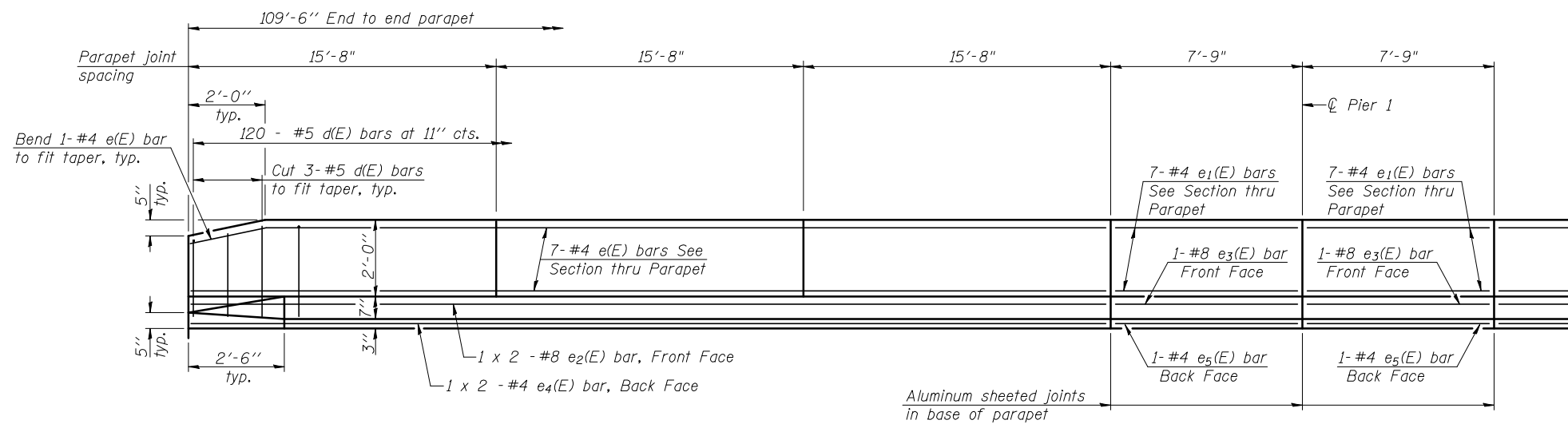
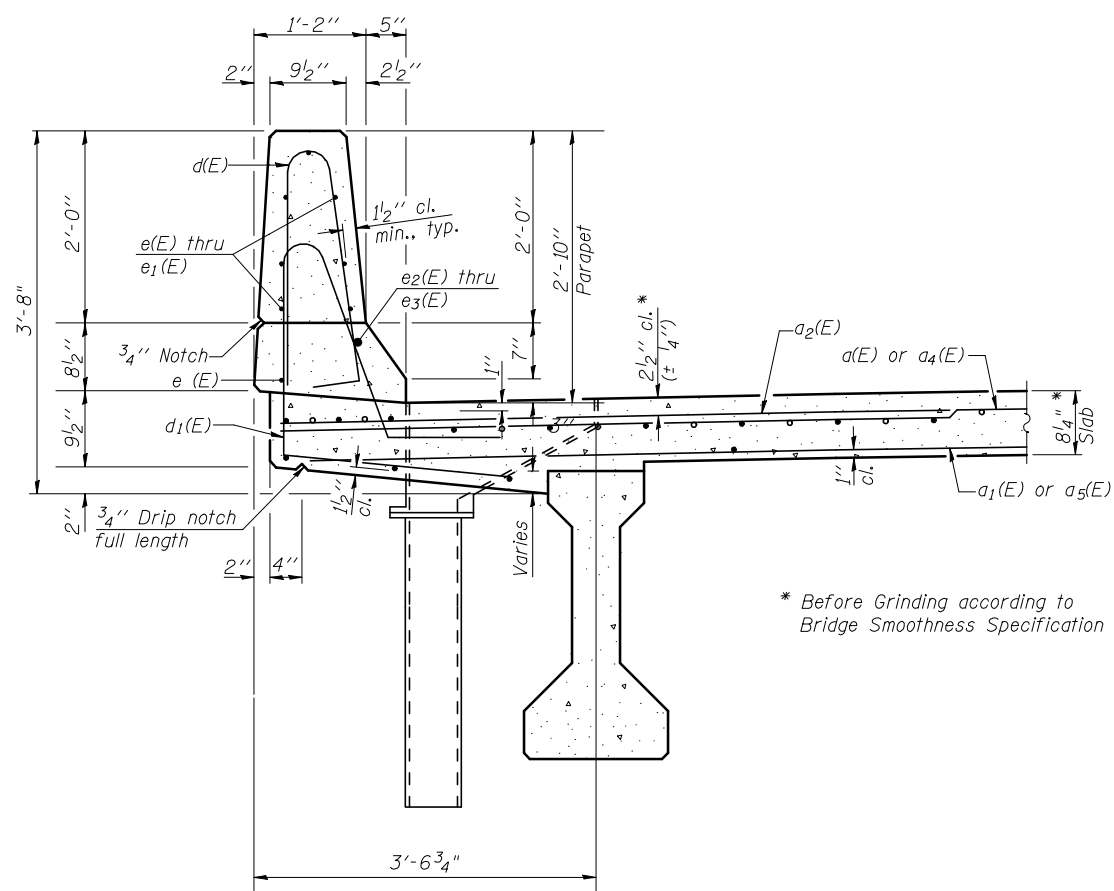


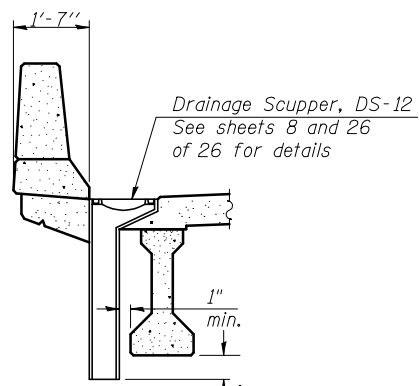
STATE OF ILLINOIS
DEPARTMENT OF TRANSPORTATION



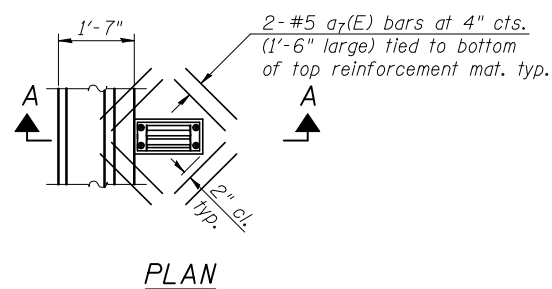
INSIDE ELEVATION OF PARAPET



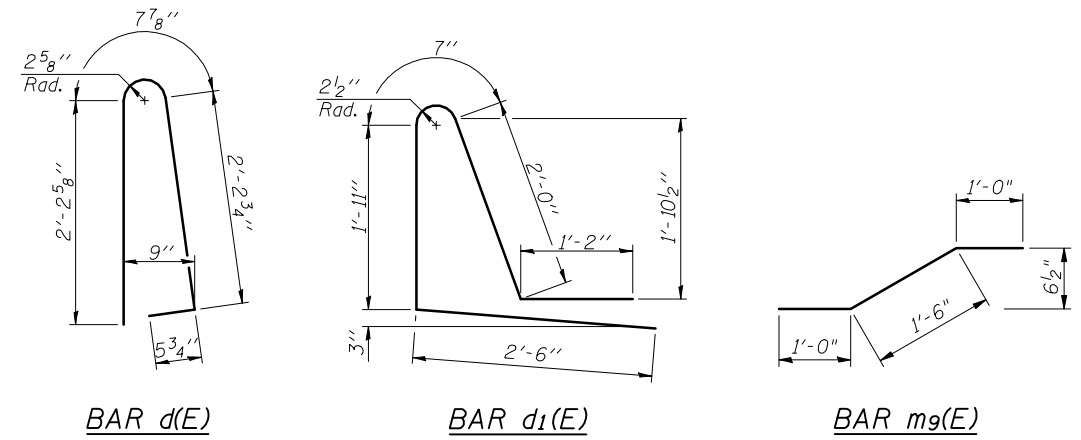
SECTION THRU PARAPET



SECTION A-A



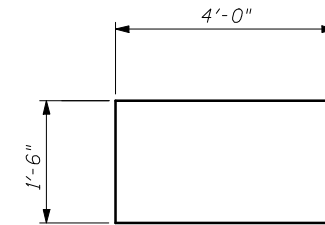
PLAN



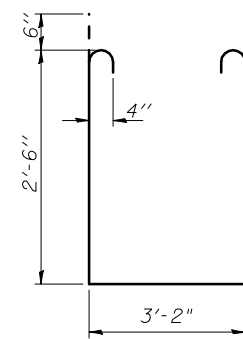
BAR d(E)

BAR d1(E)

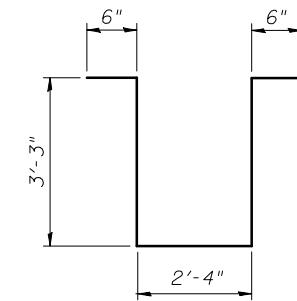
BAR m9(E)



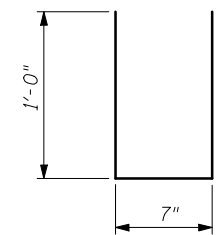
BAR s(E)



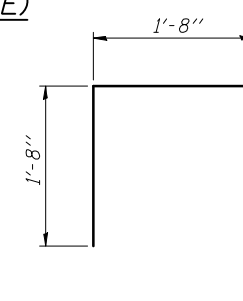
BAR s1(E)



BAR s2(E)



BAR u(E)



BAR v(E)

SUPERSTRUCTURE
BILL OF MATERIAL

Bar	No.	Size	Length	Shape
a(E)	215	#5	19'-1"	—
a1(E)	143	#5	19'-1"	—
a2(E)	422	#6	6'-6"	—
a3(E)	4	#6	20'-5"	—
a4(E)	215	#5	23'-1"	—
a5(E)	143	#5	23'-1"	—
a6(E)	4	#6	24'-9"	—
a7(E)	16	#5	1'-6"	—
b(E)	230	#5	22'-10"	—
b1(E)	43	#6	17'-0"	—
b2(E)	148	#5	28'-2"	—
d(E)	240	#5	5'-7"	U
d1(E)	240	#5	8'-2"	U
e(E)	84	#4	15'-4"	—
e1(E)	28	#4	7'-5"	—
e2(E)	8	#8	25'-1"	—
e3(E)	4	#8	7'-5"	—
e4(E)	8	#4	24'-0"	—
e5(E)	4	#4	7'-5"	—
m(E)	10	#6	20'-3"	—
m1(E)	6	#6	20'-3"	—
m2(E)	24	#6	8'-7"	—
m3(E)	8	#6	6'-1"	—
m4(E)	4	#6	2'-6"	—
m5(E)	10	#6	24'-9"	—
m6(E)	6	#6	24'-9"	—
m7(E)	2	#6	4'-10"	—
m8(E)	10	#6	5'-5"	—
m9(E)	6	#8	3'-6"	—
m10(E)	20	#4	6'-9"	—
s(E)	82	#5	9'-6"	U
s1(E)	72	#4	9'-2"	U
s2(E)	30	#4	9'-10"	U
u(E)	72	#5	2'-7"	U
v(E)	80	#5	3'-4"	U
Reinforcement Bars, Epoxy Coated		Pound	39940	
Concrete Superstructure		Cu. Yd.	194.1	

Bars indicated thus 1 x 2 - #4 etc. indicates 1 line of bars with 2 lengths per line.

Non-staining gray one component non-sag elastomeric gun grade polyurethane sealant meeting the requirements of ASTM C-920, Type S, Grade NS, Class 25. Use T with a 5/8" backer rod.

1/2" Preformed Self-Expanding Cork Joint Filler according to Article 1051.07 of the Std. Spec. Cost included with Concrete Superstructure.

PARAPET JOINT DETAILS

MINIMUM BAR LAP

#4 bar = 1'-4"
#8 bar = 3'-5"

SUPERSTRUCTURE AND PARAPET DETAILS

STRUCTURE NO. 057-0129

SHEET NO.	F.A.I RTE.	SECTION	COUNTY	TOTAL SHEETS	SHEET NO.
74	74	(57-22B-1)BR	Mc LEAN	46	19
CONTRACT NO. 70721					
FED. ROAD DIST. NO.		ILLINOIS	FED. AID PROJECT		

THE UPCHURCH GROUP, INC.