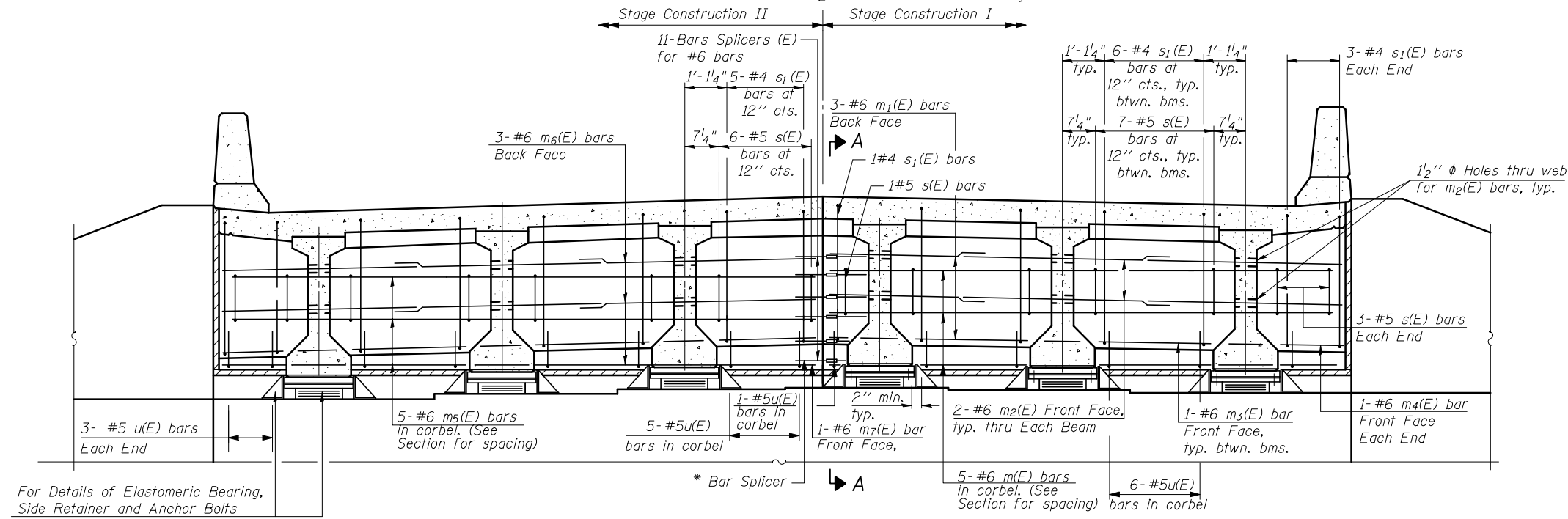


STATE OF ILLINOIS
DEPARTMENT OF TRANSPORTATION

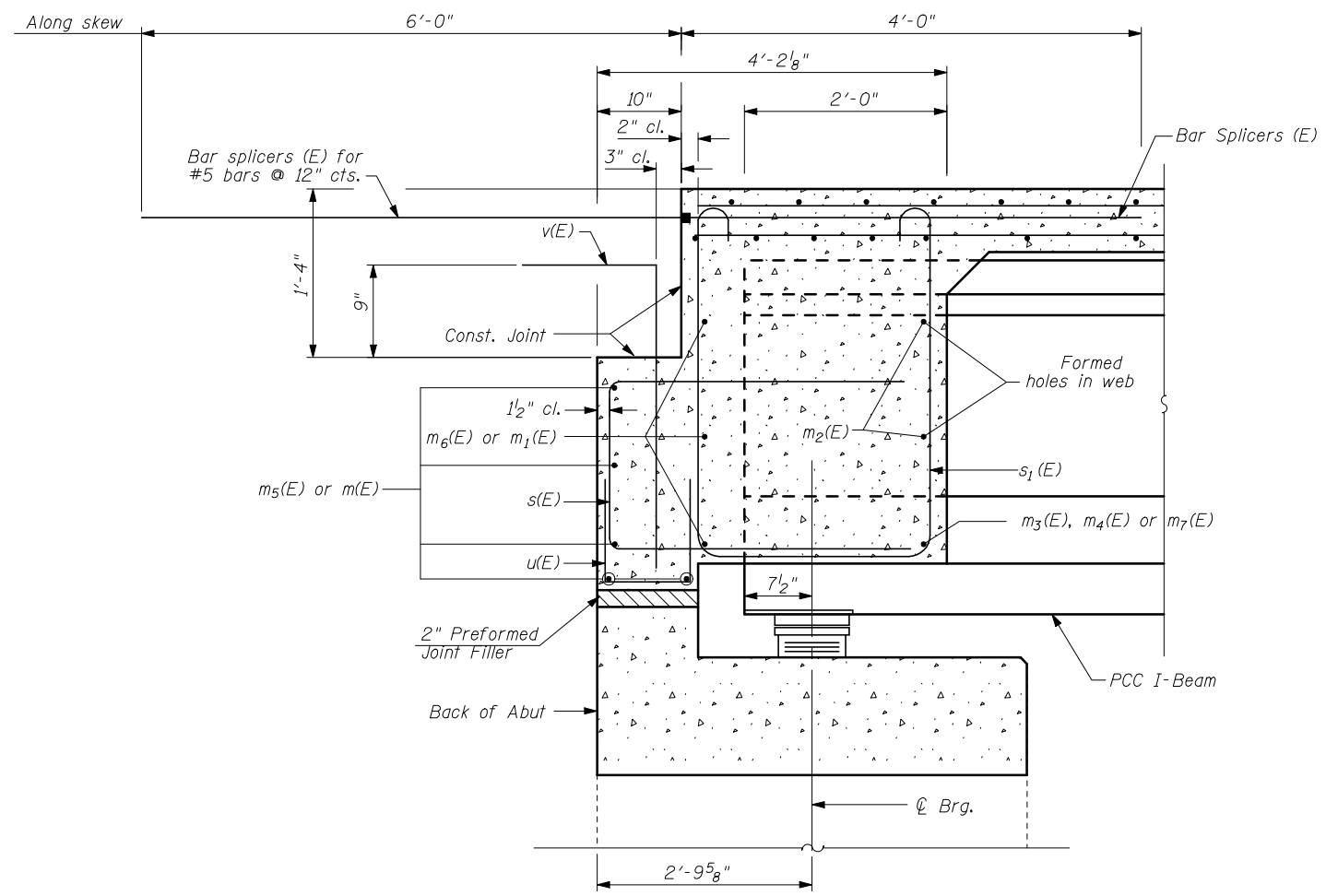
FAI 74 Westbound Roadway



For Details of Elastomeric Bearing, Side Retainer and Anchor Bolts See Sheet 15 of 26 (typ)

* Field bend the bar splicer/bar assembly along the stage construction line as required.

DIAPHRAGM ELEVATION AT ABUTMENT



SECTION A-A
AT ABUTMENT
(at Rt. Ls)

MIN. BAR LAP
#6 bar = 2'-9"

Notes:
Reinforcement bars in diaphragm are billed with superstructure on sheet 9 of 26.
Concrete in diaphragm is included with Concrete Superstructure on sheet 9 of 26.
The s(E) and s1(E) bars shall be placed parallel to the beams. Spacing for these bars shall be at right angles to the beams.
Anchor bolts for side retainers installed in holes drilled after the supporting member is in place and prior to pouring the deck.
Drilled and set anchor bolts shall be installed according to Article 521.06 of the Standard Specifications.

ABUTMENT DIAPHRAGM DETAILS
STRUCTURE NO. 057-0129

SHEET NO. 10 26 SHEETS	F.A.I RTE.	SECTION	COUNTY	TOTAL SHEETS	SHEET NO.
	74	(57-22B-1)BR	Mc LEAN	46	20
			CONTRACT NO. 70721		
FED. ROAD DIST. NO. _		ILLINOIS	FED. AID PROJECT		

THE UPCHURCH GROUP, INC.