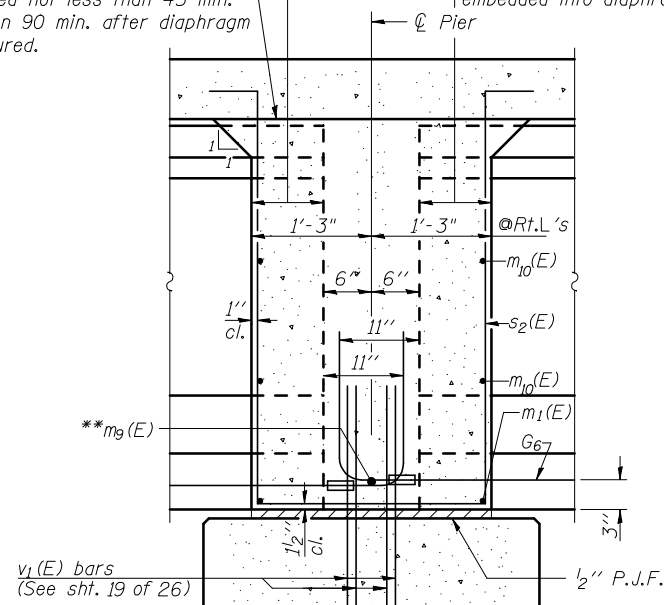


STATE OF ILLINOIS  
DEPARTMENT OF TRANSPORTATION

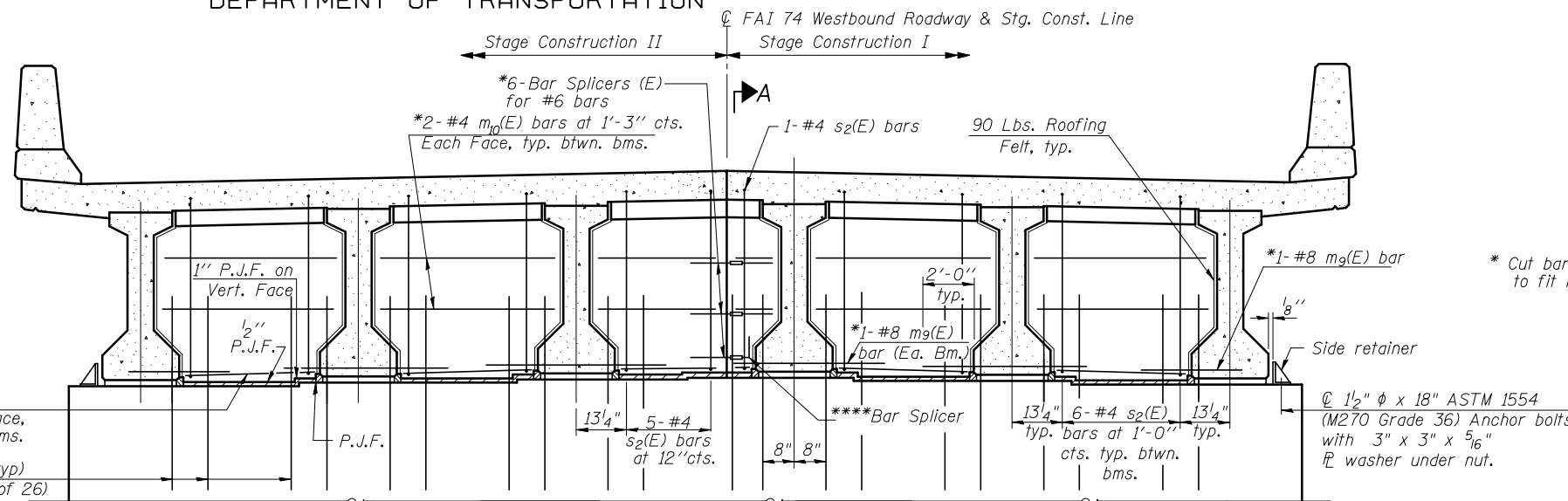
Pour diaphragm flush with bott. of slab. Concrete in slab above this line shall be placed not less than 45 min. nor more than 90 min. after diaphragm has been poured.

Roofing felt shall be bonded to side of beam embedded into diaphragm.



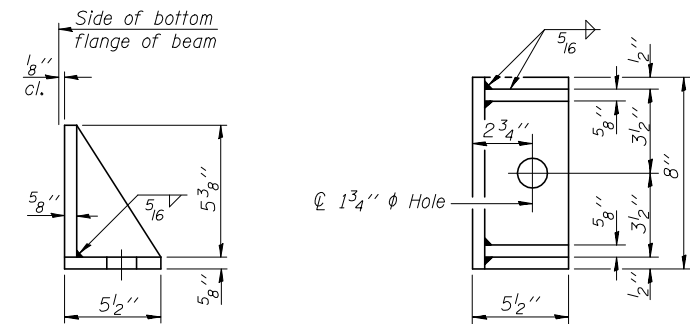
SECTION A-A

\*\*Tightly fasten the #8 bars together with No. 9 wire ties.



DIAPHRAGM AT PIER  
(Horizontal Dimensions @ Rt L's to the Beams)

\*\*\*\* Field bend the bar splicer/bar assembly along the stage construction line as required.



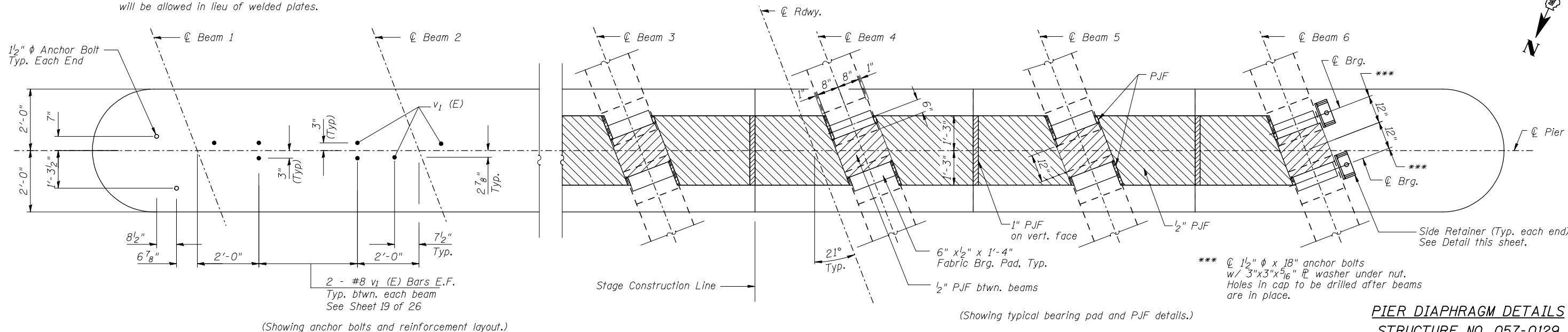
SIDE RETAINER  
(2 required each side of pier)  
Equivalent rolled angle with stiffeners will be allowed in lieu of welded plates.

Notes:  
Reinforcement bars in diaphragm are billed with superstructure on sheet 9 of 26.  
Concrete in diaphragm is included with Concrete Superstructure on sheet 9 of 26.  
For details of bars s2(E) see sheet 9 of 26.  
The s2(E) bars shall be placed parallel to the beams.  
Spacing for these bars shall be at right angles to the beams.  
Cost of 90 Lb. roofing felt is included with Concrete Superstructure.  
The side retainer shall be galvanized after shop fabrication according to AASHTO M 111 and ASTM 385.  
Anchor bolt assemblies shall be galvanized according to Article 1006.09 of the Standard Specifications.

Anchor bolts shall be ASTM F1554 all-thread (or an Engineer-approved alternate material) of the grade and diameter specified. ASTM A307 Grade C anchor bolts may be used in lieu of ASTM F1554 Grade 36 (Fy=36ksi). The corresponding specified grade of AASHTO M314 anchor bolts may be used in lieu of ASTM F1554.  
Anchor bolts for side retainers shall be installed in holes drilled after the supporting member is in place and prior to pouring the deck.  
Drilled and set anchor bolts shall be installed according to Article 521.06 of the Standard Specifications.  
Cost of side retainers shall be included with Concrete Structures.

BILL OF MATERIAL

Item	Unit	Total
Anchor Bolts, 1 1/2"	Each	4



PLAN AT PIER CAP  
(Looking Upstation)

PIER DIAPHRAGM DETAILS  
STRUCTURE NO. 057-0129

SHEET NO. 11  26 SHEETS	F.A.I RTE.	SECTION	COUNTY	TOTAL SHEETS	SHEET NO.
	74	(57-22B-1)BR	Mc LEAN	46	21
			CONTRACT NO. 70721		
FED. ROAD DIST. NO.		ILLINOIS	FED. AID PROJECT		

THE UPCHURCH GROUP, INC.