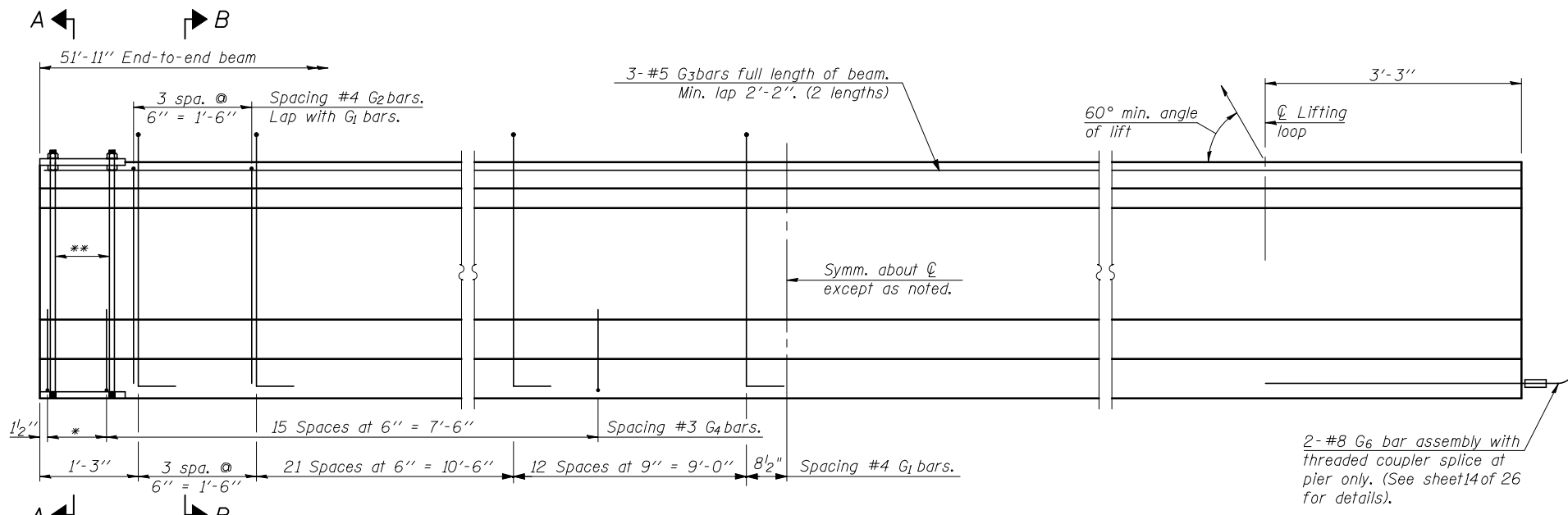
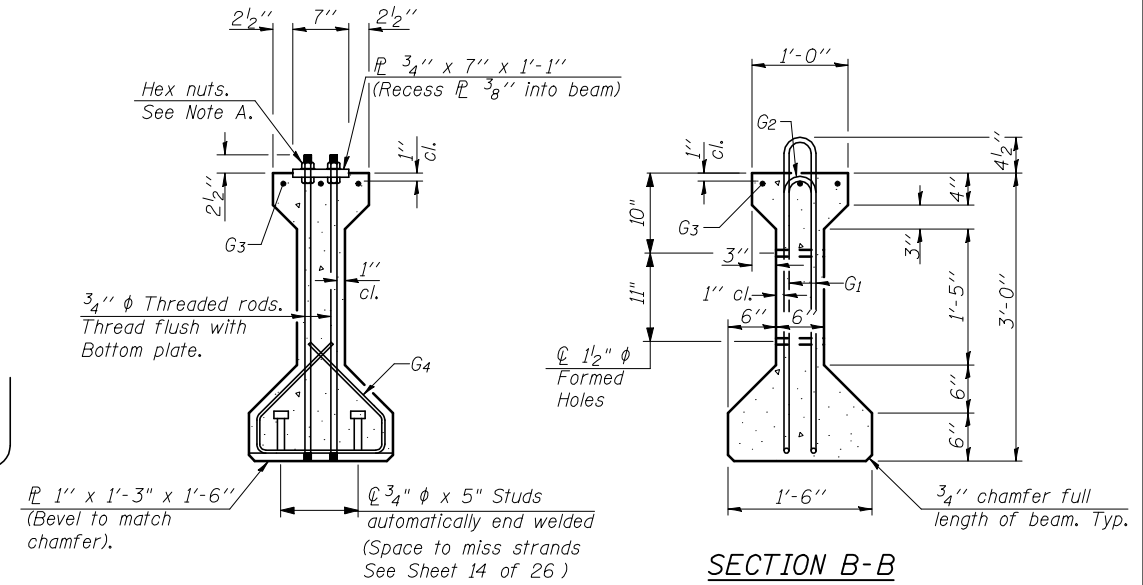


STATE OF ILLINOIS
DEPARTMENT OF TRANSPORTATION



ELEVATION OF BEAM
(Showing reinforcement & dimensions)

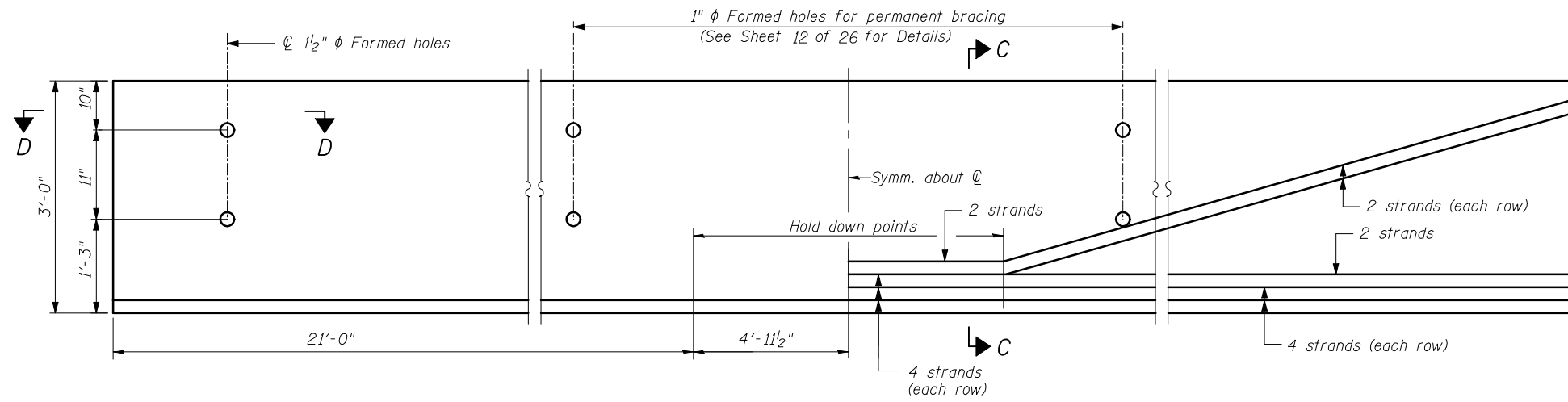


SECTION A-A

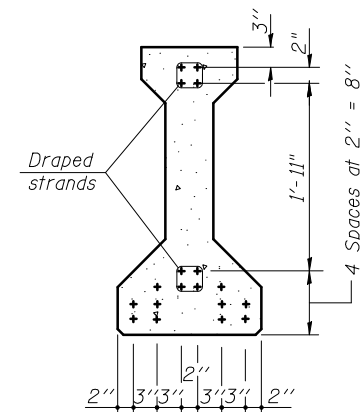
SECTION B-B

Note A:
Hex nuts (top and bottom) with lock washers (top). Only tighten sufficiently to compress lock washers.

*3 spaces at 3" = 9".
**4- 3/4" ϕ threaded dowel rods at 3" cts., Each Face.



ELEVATION OF BEAM
(Showing prestressing steel)



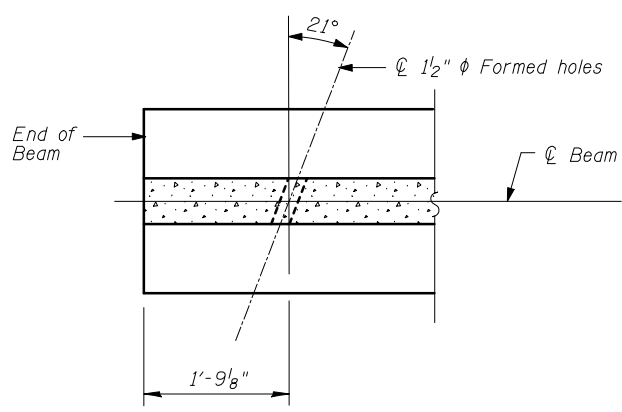
SECTION C-C

*****BAR LIST**
ONE BEAM ONLY

Bar	No.	Size	Length	Shape
G ₁	74	#4	7'-5"	⏏
G ₂	74	#4	5'-8"	⏏
G ₃	6	#5	26'-11"	—
G ₄	38	#3	4'-1"	⏏
G ₆	2	#8	6'-6"	—

***For information only

Notes:
See sheet 14 of 26 for additional details and Bill of Material.
Required release strength, f'ci, shall be 5,000 psi.



SECTION D-D

36" PPC I-BEAM
STRUCTURE NO. 057-0129

SHEET NO. 13 26 SHEETS	F.A.I RTE.	SECTION	COUNTY	TOTAL SHEETS	SHEET NO.
	74	(57-22B-1)BR	Mc LEAN	46	23
			CONTRACT NO. 70721		
FED. ROAD DIST. NO.		ILLINOIS	FED. AID PROJECT		

THE UPCHURCH GROUP, INC.