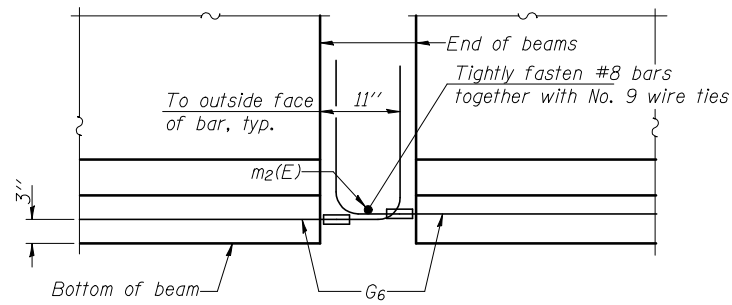
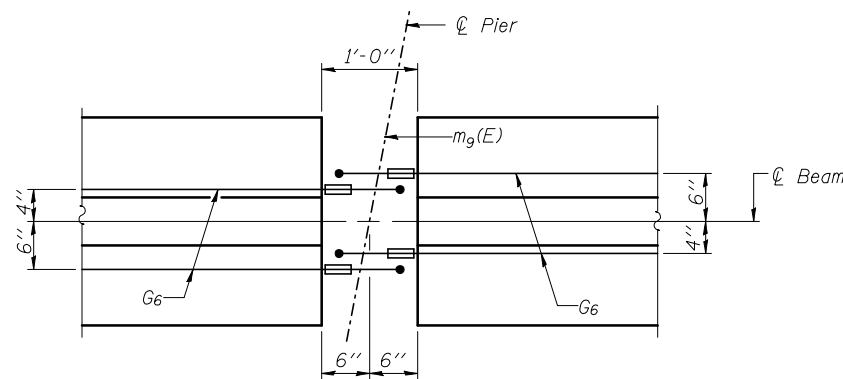


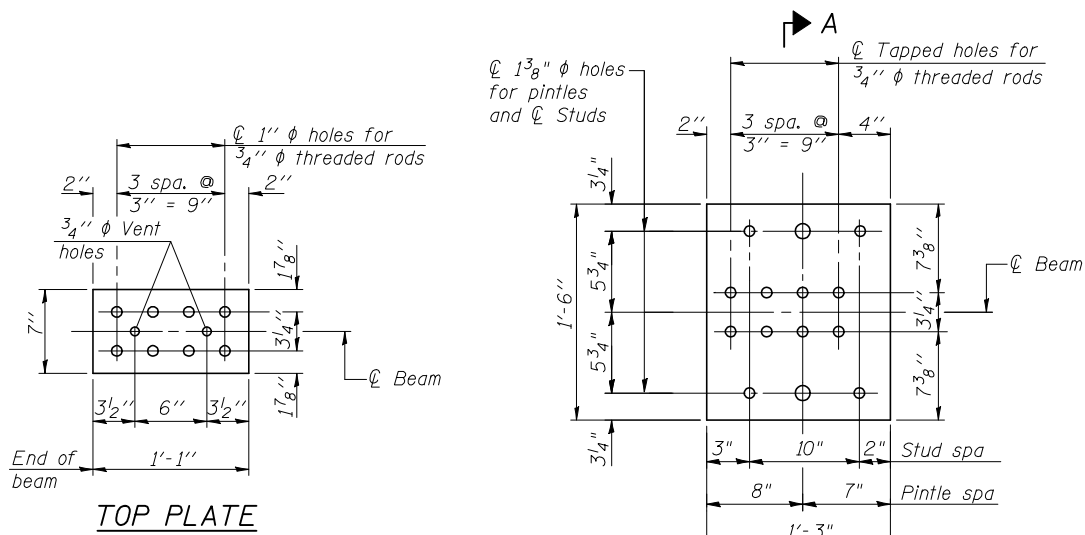
STATE OF ILLINOIS
DEPARTMENT OF TRANSPORTATION



ELEVATION OF BEAM AT PIER



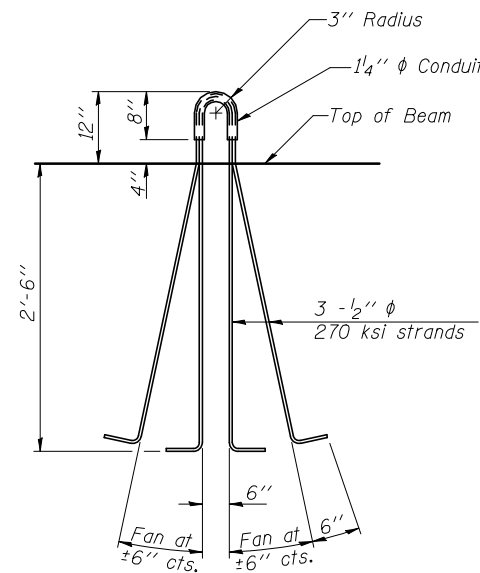
PLAN OF BEAM AT PIER



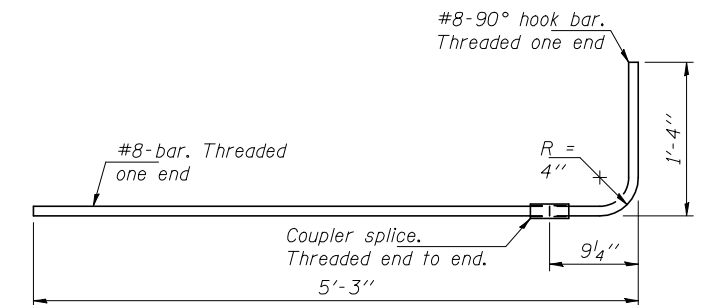
TOP PLATE

BOTTOM PLATE

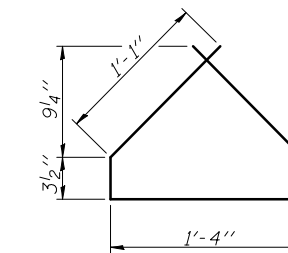
See bearing details for pintle hole locations.



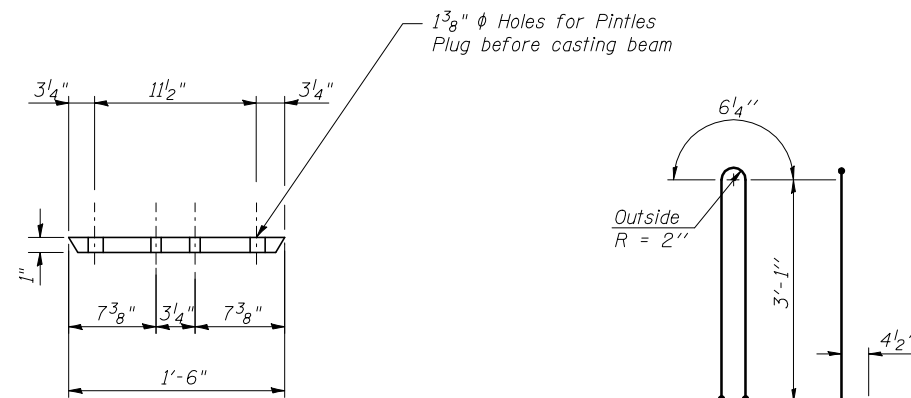
LIFTING LOOP DETAIL



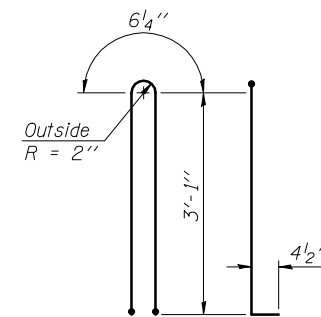
G6 BAR ASSEMBLY



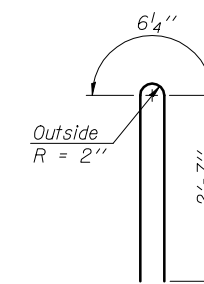
BAR G4



SECTION A-A



BAR G1



BAR G2

BILL OF MATERIAL

Item	Unit	Total
Furnishing and Erecting Precast Prestressed Concrete I-Beams, 36"	Foot	623

36" PPC I-BEAM DETAILS
STRUCTURE NO. 057-0129

SHEET NO. 14 26 SHEETS	F.A.I RTE.	SECTION	COUNTY	TOTAL SHEETS	SHEET NO.
	74	(57-22B-1)BR	Mc LEAN	46	24
			CONTRACT NO. 70721		
FED. ROAD DIST. NO.		ILLINOIS	FED. AID PROJECT		

THE UPCHURCH GROUP, INC.