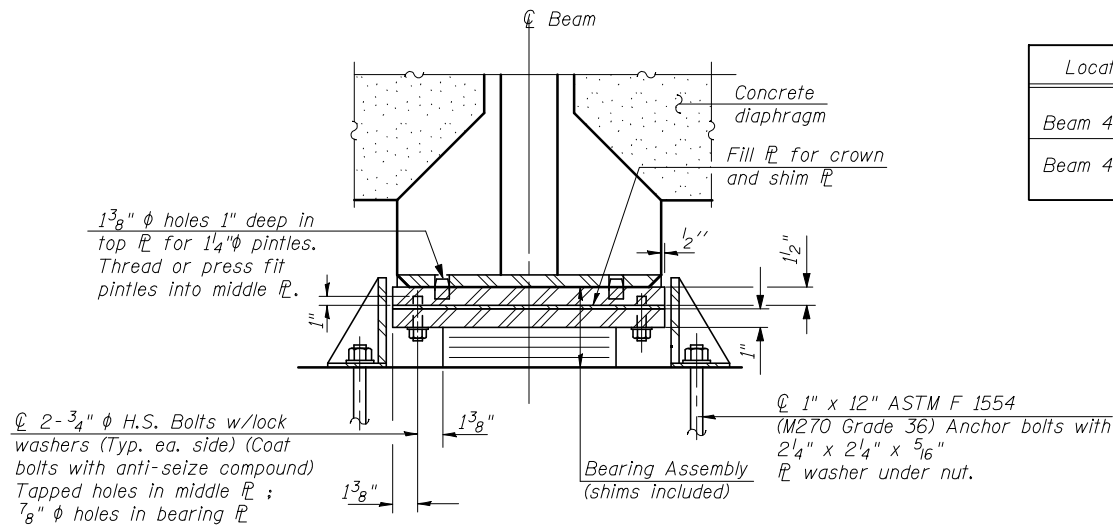
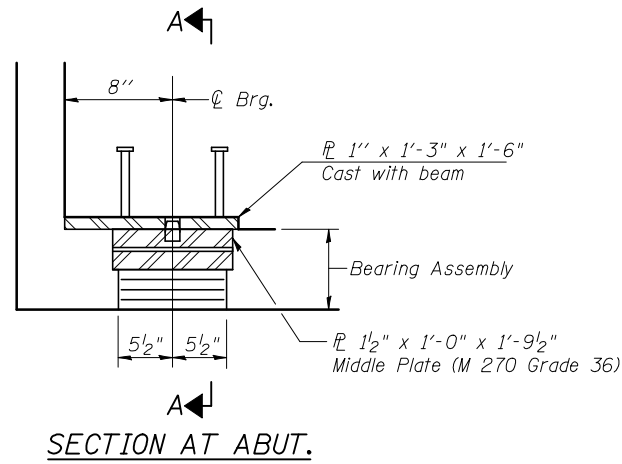


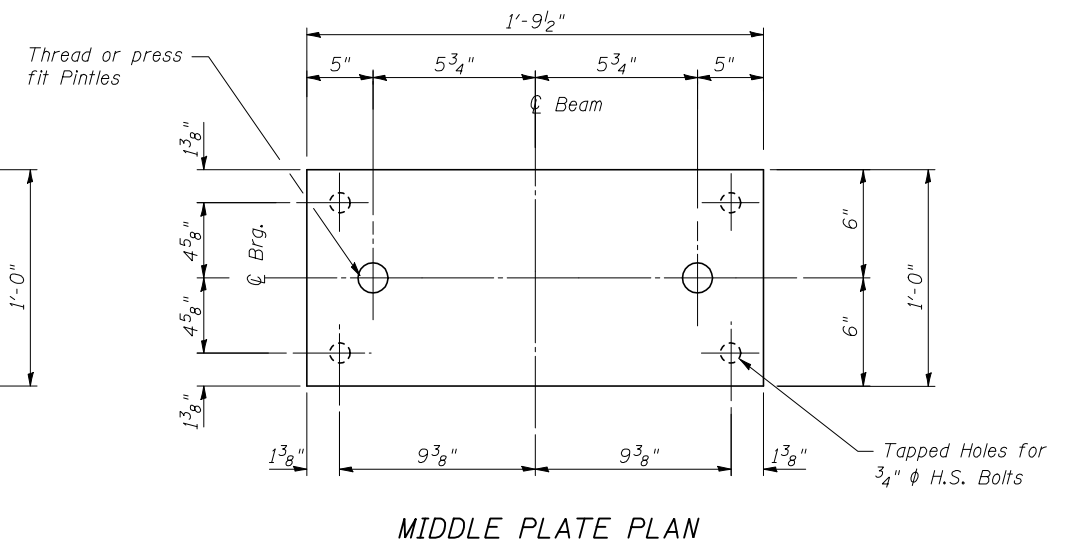
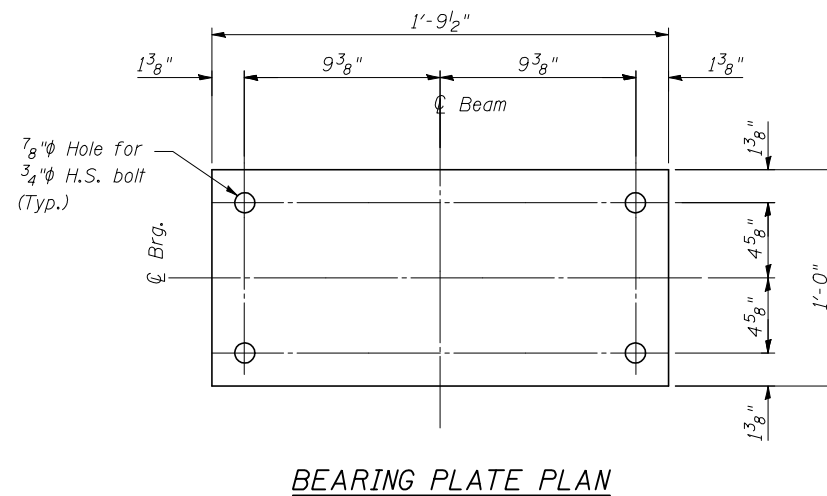
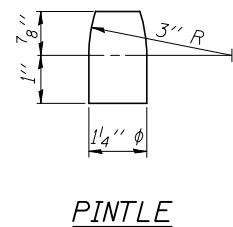
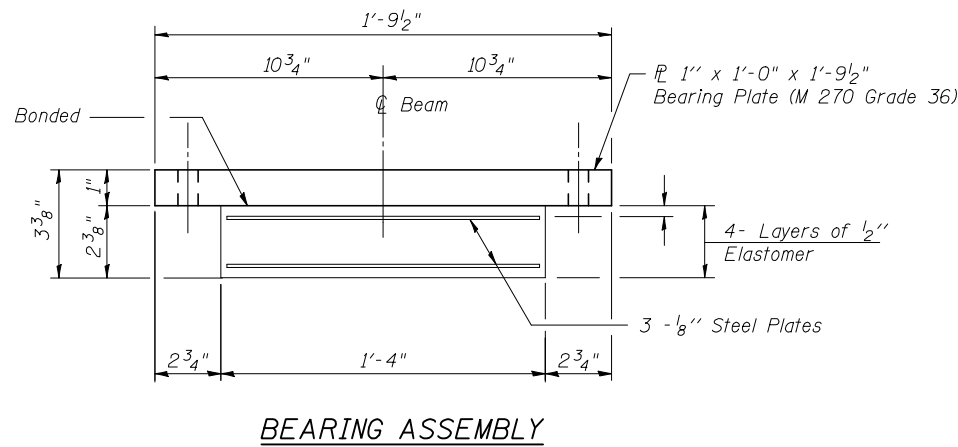
STATE OF ILLINOIS
DEPARTMENT OF TRANSPORTATION



Location	Fill \bar{R} for Crown
Beam 4 W Abut.	1/2"
Beam 4 E Abut.	1/2"

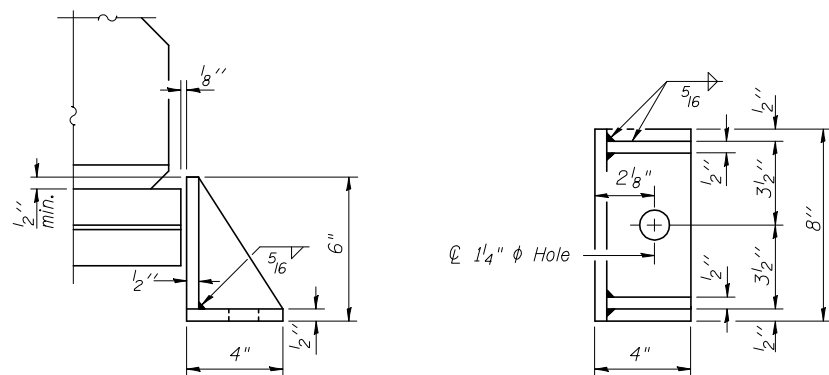
Notes:
Anchor bolts shall be ASTM F1554 all-thread (or an Engineer-approved alternate material) of the grade(s) and diameter(s) specified. ASTM A307 Grade C anchor bolts may be used in lieu of ASTM F1554 Grade 36 (Fy=36ksi). The corresponding specified grade of AASHTO M314 anchor bolts may be used in lieu of ASTM F1554.
Anchor bolts for side retainers installed in holes drilled after members are in place.
Drilled and set anchor bolts shall be installed according to Article 521.06 of the Standard Specifications.
Side retainers and other steel members required for the bearing assembly shall be included in the cost of Elastomeric Bearing Assembly, Type I.
See sheet of for additional details of plate cast with beam.
All embedded and separate bearing plates, side retainers, anchor bolts, nuts, washers and pintles shall be galvanized according to AASHTO M111 or M232 (as applicable).
H.S. bolts in bearing assembly shall be galvanized according to AASHTO M298 Class 50.

TYPE I ELASTOMERIC EXP. BRG.



BILL OF MATERIAL

Item	Unit	Total
Elastomeric Bearing Assembly, Type I	Each	12
Anchor Bolts, 1"	Each	24



SIDE RETAINER
Equivalent rolled angle with stiffeners will be allowed in lieu of welded plates.

**ELASTOMERIC BEARING DETAILS
STRUCTURE NO. 057-0129**

SHEET NO. 15	F.A.I RTE.	SECTION	COUNTY	TOTAL SHEETS	SHEET NO.
26 SHEETS	74	(57-22B-1)BR	Mc LEAN	46	25
			CONTRACT NO. 70721		
FED. ROAD DIST. NO.		ILLINOIS	FED. AID PROJECT		

THE UPCHURCH GROUP, INC.