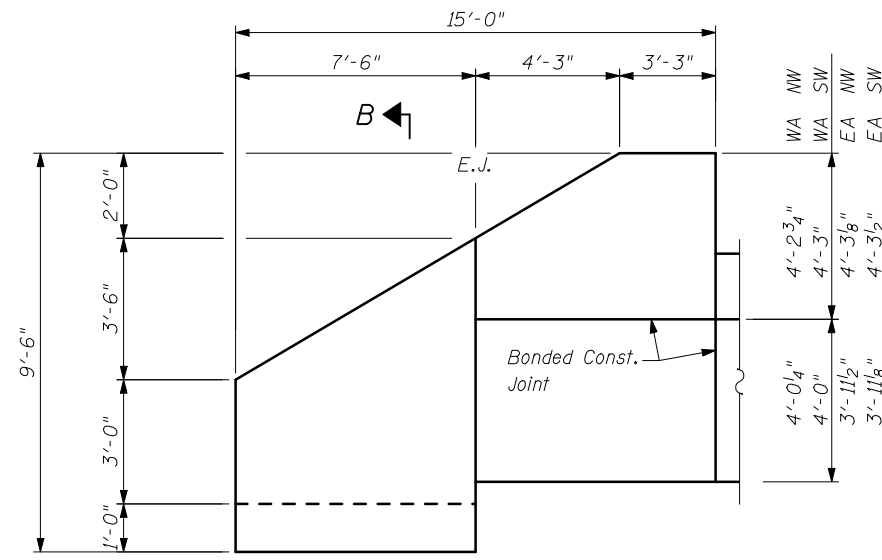
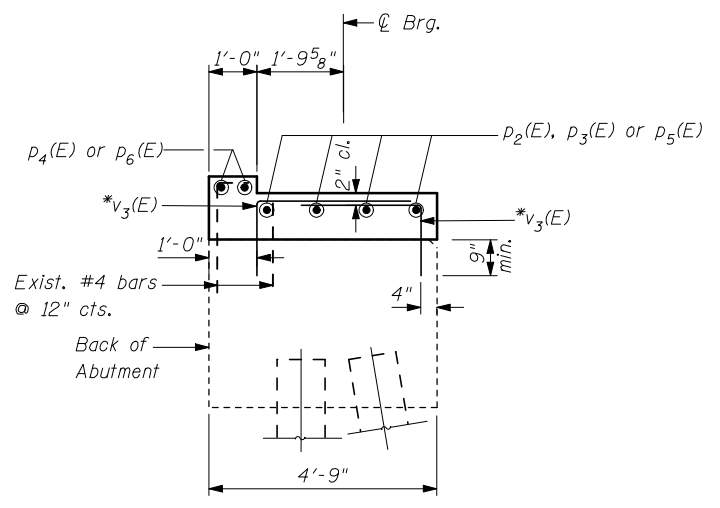


STATE OF ILLINOIS
DEPARTMENT OF TRANSPORTATION

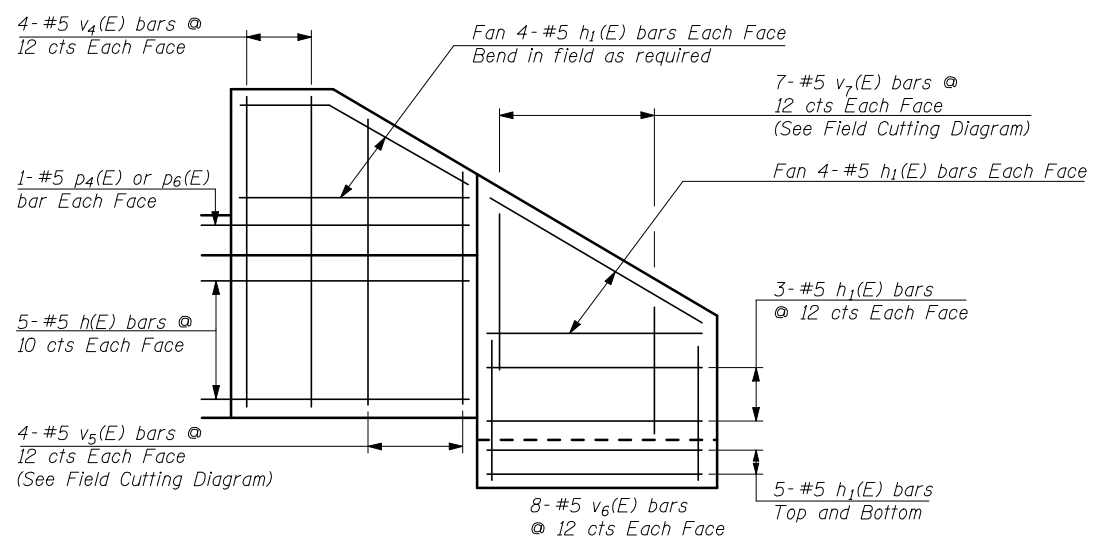


WING WALL ELEVATION
(Showing Dimensions)

W.A. = West Abutment
E.A. = East Abutment
N.W. = North WingWall
S.W. = South WingWall



SECTION A-A THRU ABUTMENT



WING WALL ELEVATION
(Showing Reinforcement)

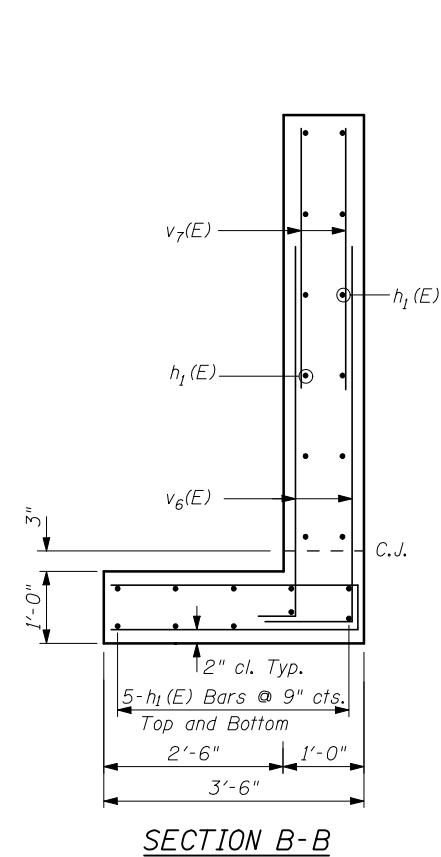
**BILL OF MATERIAL
FOR BOTH ABUTMENTS**

Bar	No.	Size	Length	Shape
h(E)	40	#5	8'-11"	—
h ₁ (E)	128	#5	7'-3"	—
p ₂ (E)	8	#5	8'-0"	—
p ₃ (E)	16	#5	15'-2"	—
p ₄ (E)	4	#5	29'-2"	—
p ₅ (E)	8	#5	8'-4"	—
p ₆ (E)	4	#5	31'-4"	—
s ₆ (E)	6	#5	16'-7"	□
u ₆ (E)	8	#5	8'-6"	⌒
u ₇ (E)	8	#5	6'-9"	⌒
v ₃ (E)	178	#5	3'-8"	⌒
v ₄ (E)	32	#5	7'-10"	—
v ₅ (E)	16	#5	13'-2"	—
v ₆ (E)	64	#5	4'-8"	⌒
v ₇ (E)	28	#5	7'-4"	—
Structure Excavation			Cu. Yd.	222
Concrete Structures			Cu. Yd.	24.5
Reinforcement Bars, Epoxy Coated			Pound	3900

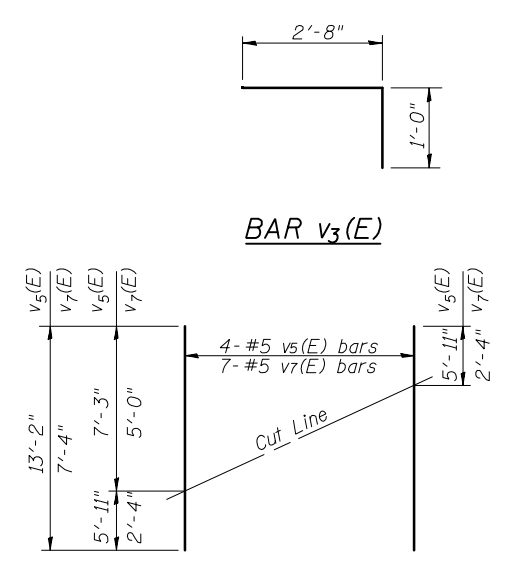
MIN. BAR LAP
#5 Bar = 1'-8"

For details of Bar Splicers, see sheet 24 of 26.
Cost of Joint Filler, Concrete Nails, and Water Seal shall be included with CONCRETE STRUCTURES.

**ABUTMENT DETAILS
STRUCTURE NO. 057-0129**

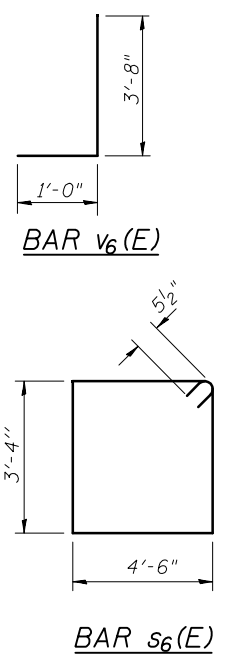


SECTION B-B

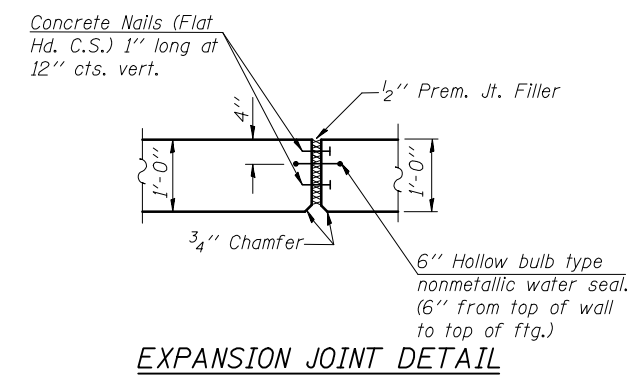


FIELD CUTTING DIAGRAM

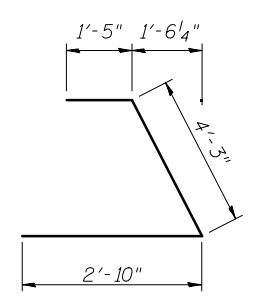
Order v₅(E) and v₇(E) full length. Cut as shown and use remainder of bars in opposite face.



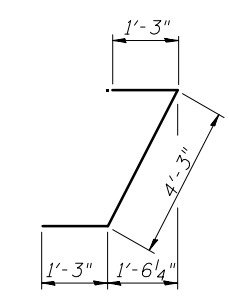
BAR s₆(E)



EXPANSION JOINT DETAIL



BAR u₆(E)



BAR u₇(E)

SHEET NO. 18 26 SHEETS	F.A.I RTE.	SECTION	COUNTY	TOTAL SHEETS	SHEET NO.
	74	(57-22B-1)BR	Mc LEAN	46	28
			CONTRACT NO. 70721		
FED. ROAD DIST. NO.		ILLINOIS	FED. AID PROJECT		

THE UPCHURCH GROUP, INC.