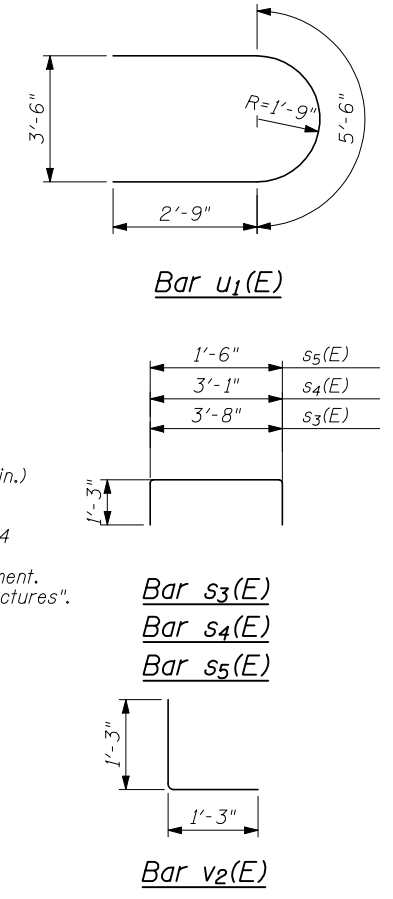
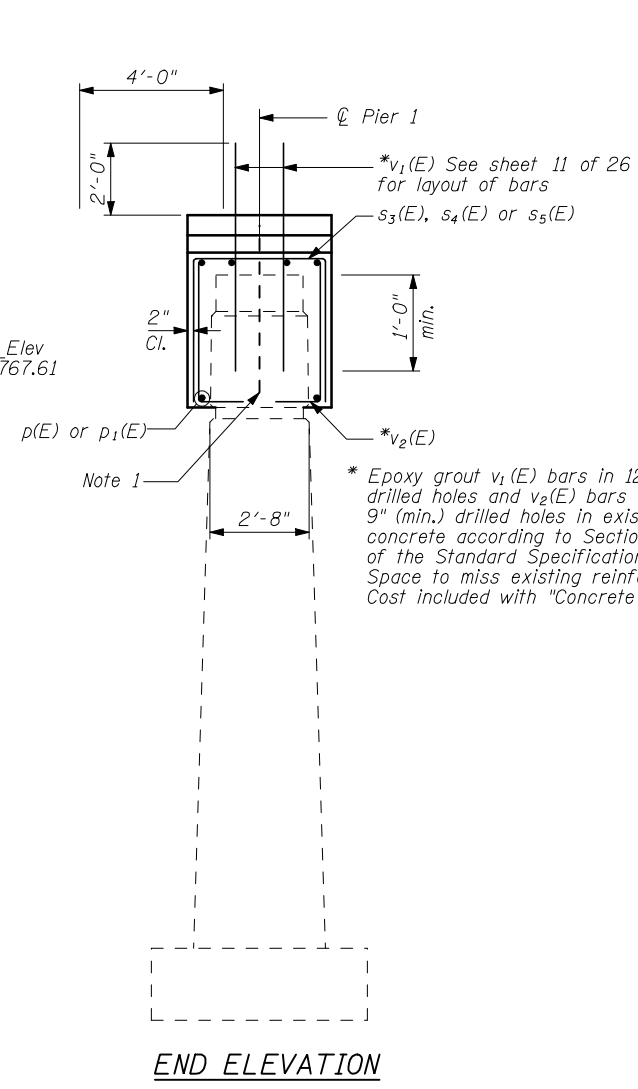
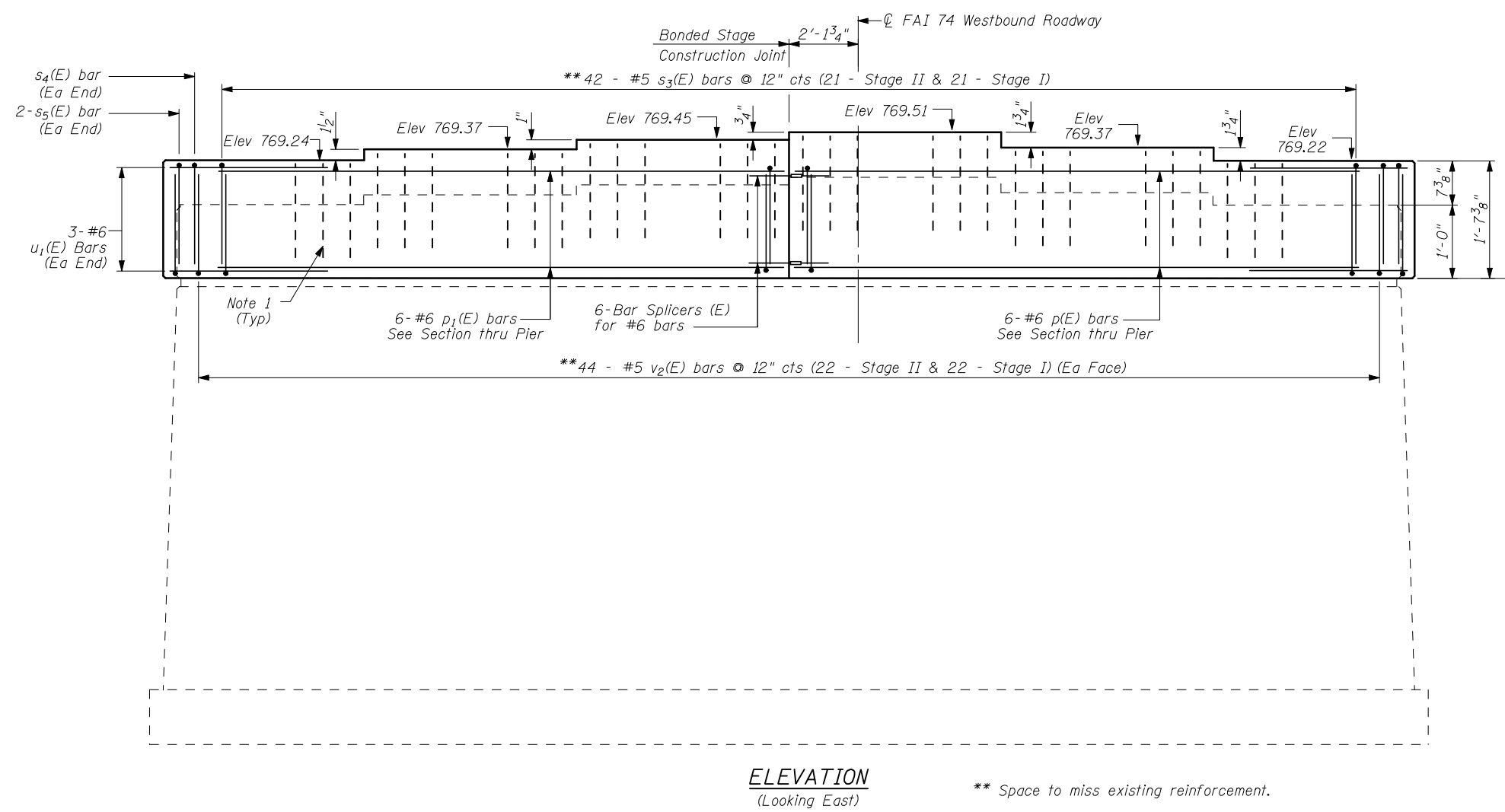
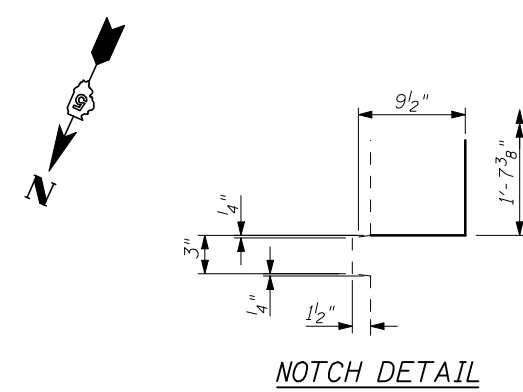
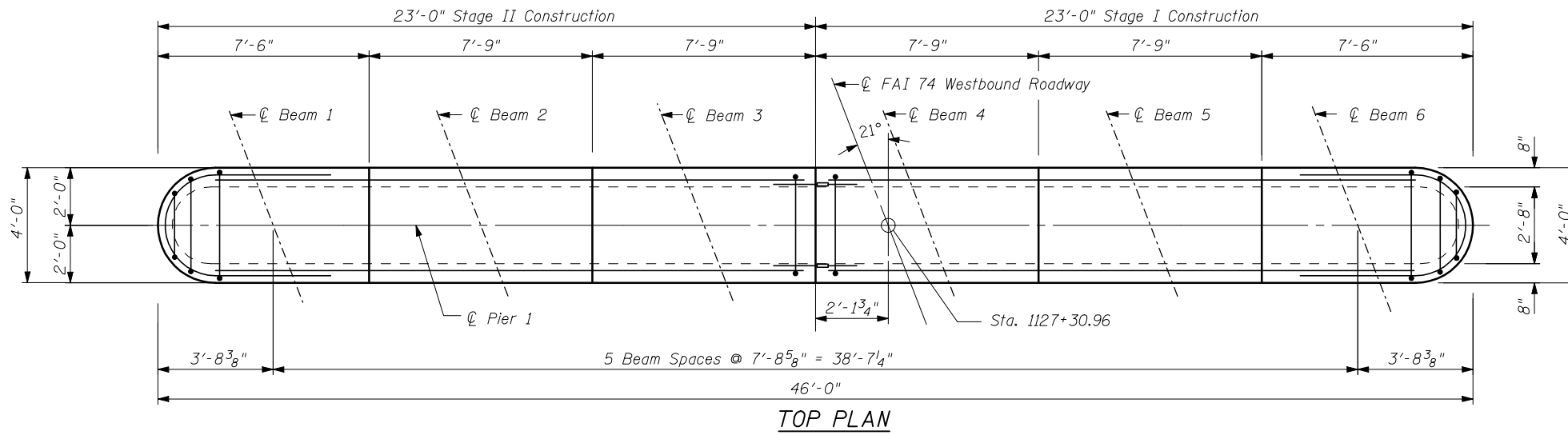


STATE OF ILLINOIS
DEPARTMENT OF TRANSPORTATION

PIER 1
BILL OF MATERIAL

Bar	No.	Size	Length	Shape
p(E)	6	#6	20'-6"	—
p ₁ (E)	6	#6	20'-6"	—
s ₃ (E)	42	#5	6'-2"	□
s ₄ (E)	2	#5	5'-7"	□
s ₅ (E)	4	#5	4'-0"	□
u ₁ (E)	6	#6	11'-0"	U
v ₁ (E)	30	#8	3'-6"	—
v ₂ (E)	88	#5	2'-6"	└
Reinforcement Bars, Epoxy Coated		Pound	1280	
Concrete Structures		Cu. Yd.	7.2	



** Space to miss existing reinforcement.

- Notes:
- Existing reinforcement shall be cleaned and incorporated into the new construction. Cost included with Concrete Removal.
 - Cast steps monolithically with cap.
 - Space cap reinforcement to miss anchor bolts. See sheet 11 of 26 for anchor bolt layout.

PIER 1 DETAILS
STRUCTURE NO. 057-0129

SHEET NO. 19 26 SHEETS	F.A.I. RTE.	SECTION	COUNTY	TOTAL SHEETS	SHEET NO.
	74	(57-22B-1)BR	Mc LEAN	46	29
			CONTRACT NO. 70721		
FED. ROAD DIST. NO.		ILLINOIS	FED. AID PROJECT		

THE UPCHURCH GROUP, INC.