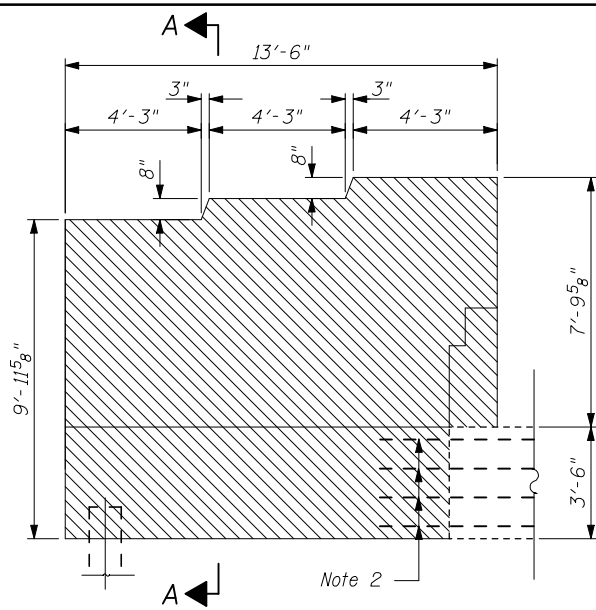
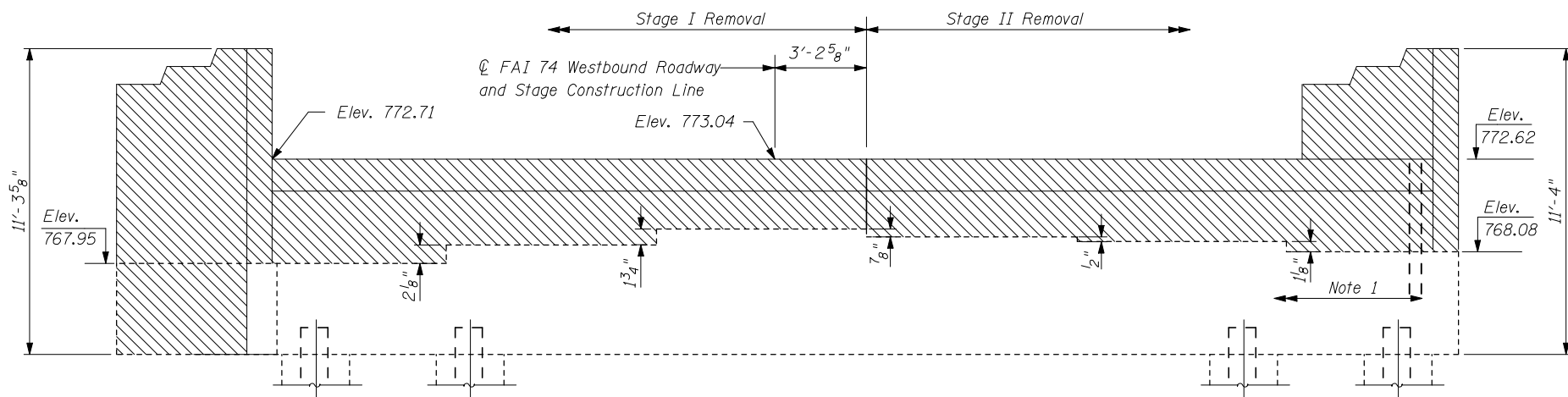


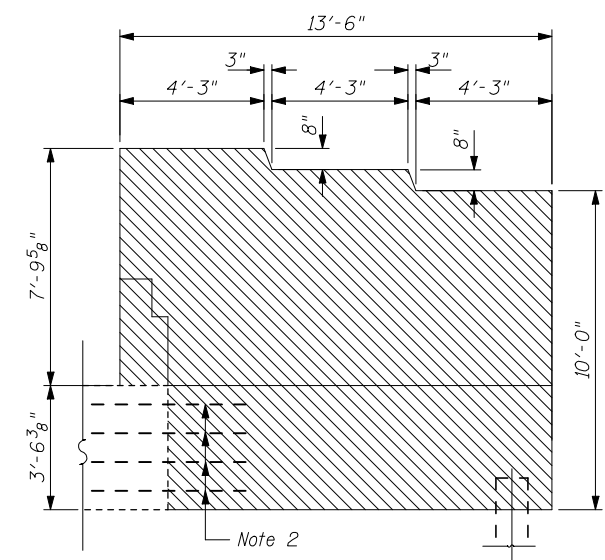
STATE OF ILLINOIS  
DEPARTMENT OF TRANSPORTATION



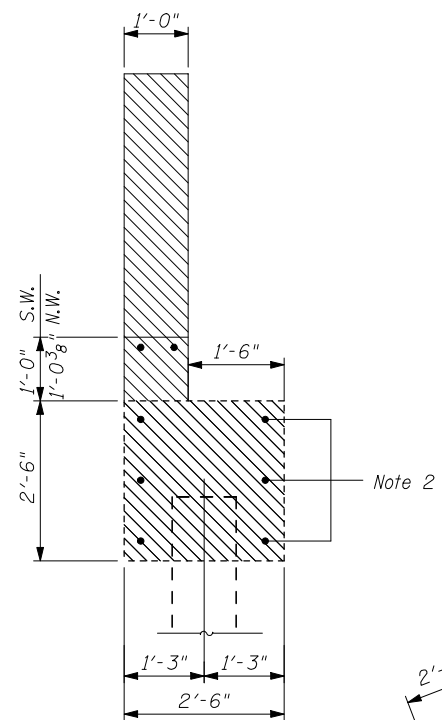
SOUTH WING WALL ELEVATION



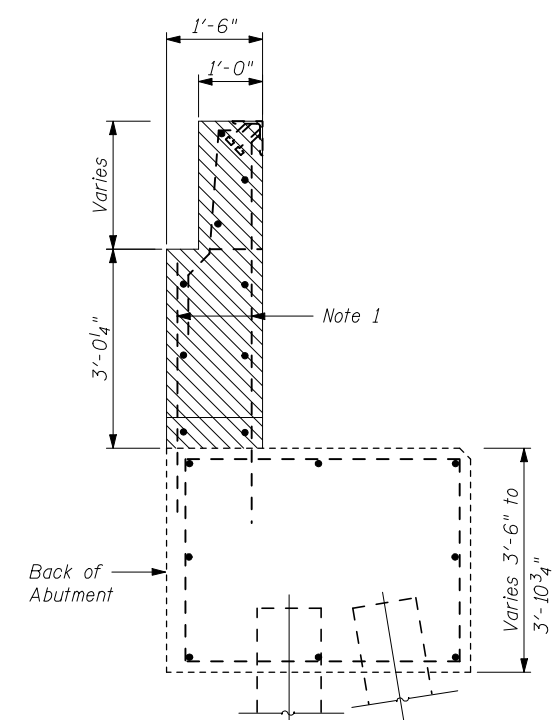
ELEVATION



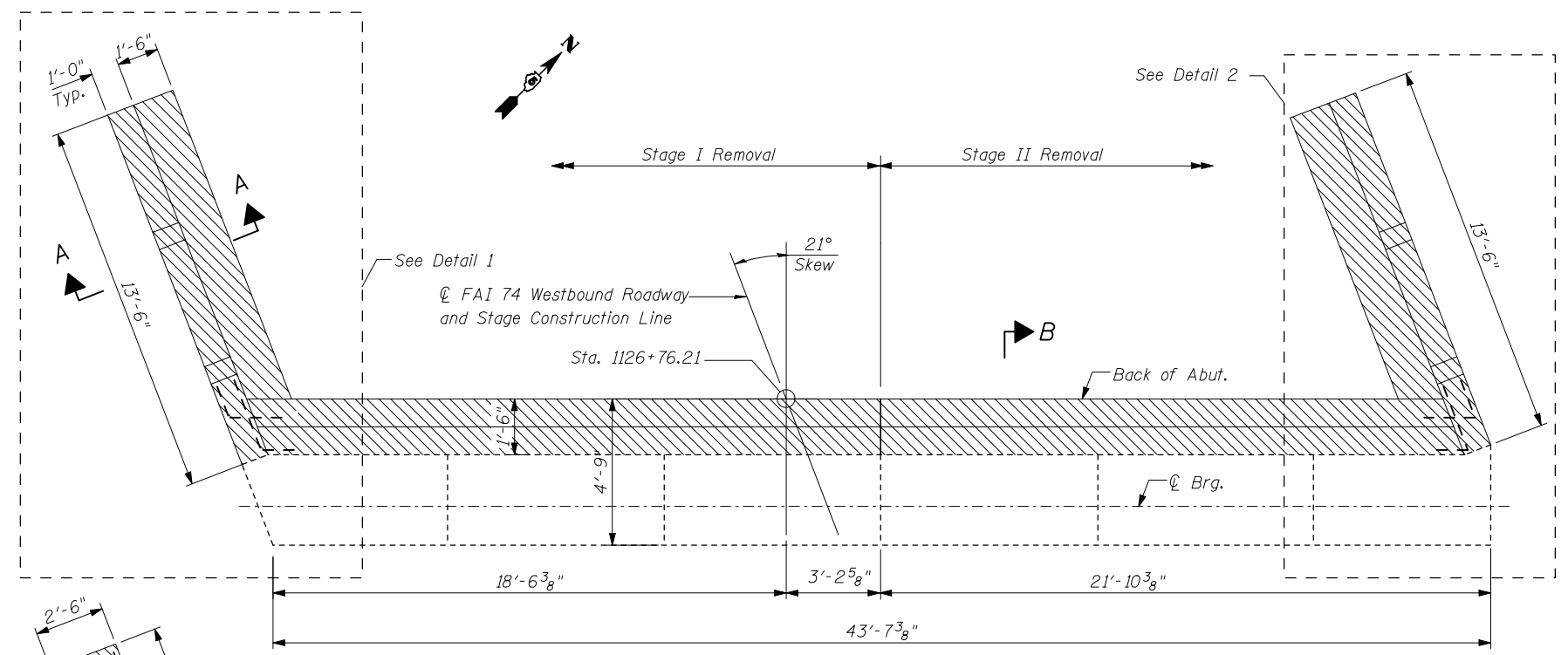
NORTH WING WALL ELEVATION



SECTION A-A



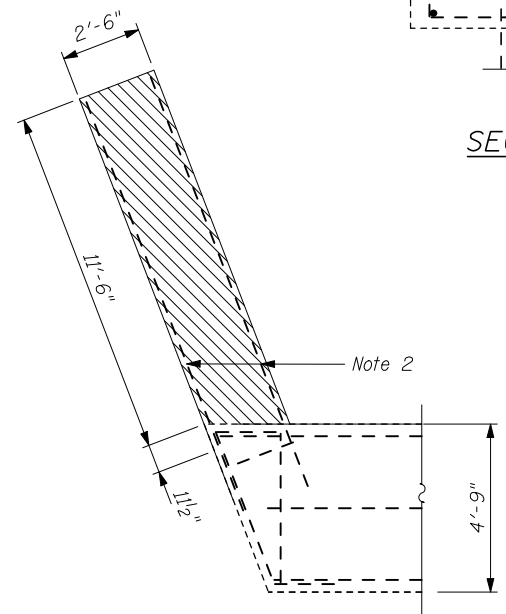
SECTION B-B



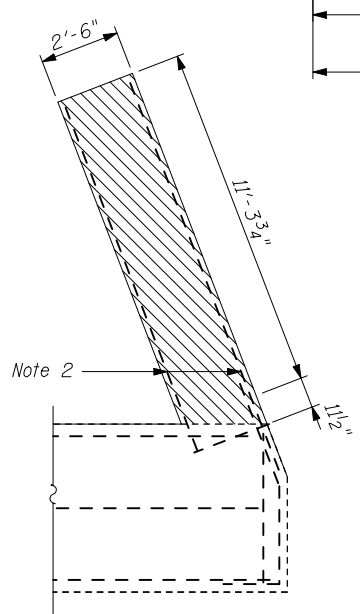
PLAN

**LEGEND**

	Removal Area
N.W.	North WingWall
S.W.	South WingWall



DETAIL 1



DETAIL 2

- Note:
- Existing reinforcement shall be cleaned and incorporated into the new construction. Cost included with Concrete Removal.
  - Cut existing rebar 1/2" below surface of existing concrete to remain. Fill recess with mortar to protect existing rebar.

**BILL OF MATERIAL**

Item	Unit	Total
Concrete Removal	Cu. Yd.	23.7

**WEST ABUTMENT CONCRETE REMOVAL**

**STRUCTURE NO. 057-0129**

SHEET NO. 20 26 SHEETS	F.A.I. RTE. 74	SECTION (57-22B-1)BR	COUNTY Mc LEAN	TOTAL SHEETS 46	SHEET NO. 30
	CONTRACT NO. 70721			FED. ROAD DIST. NO. ILLINOIS FED. AID PROJECT	

THE UPCHURCH GROUP, INC.