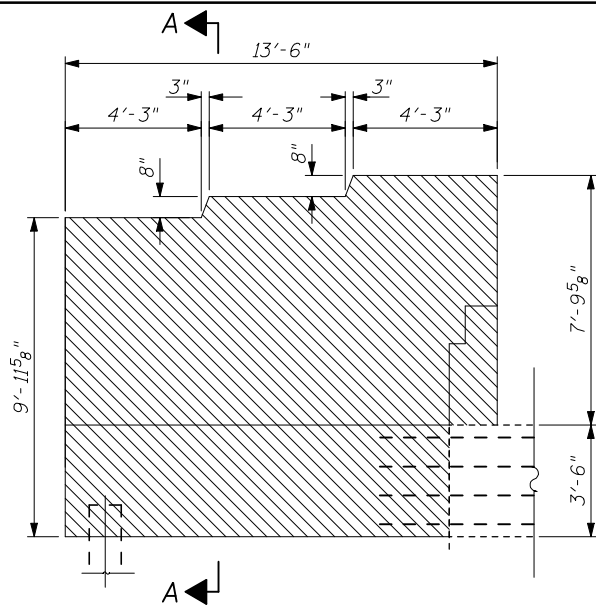
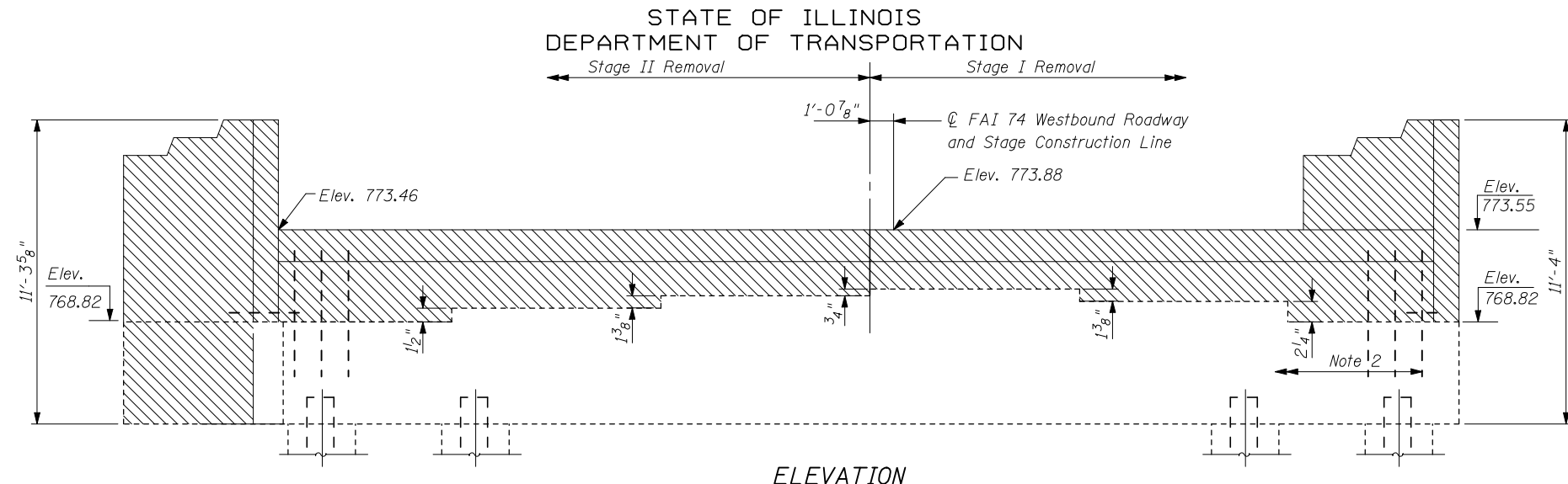


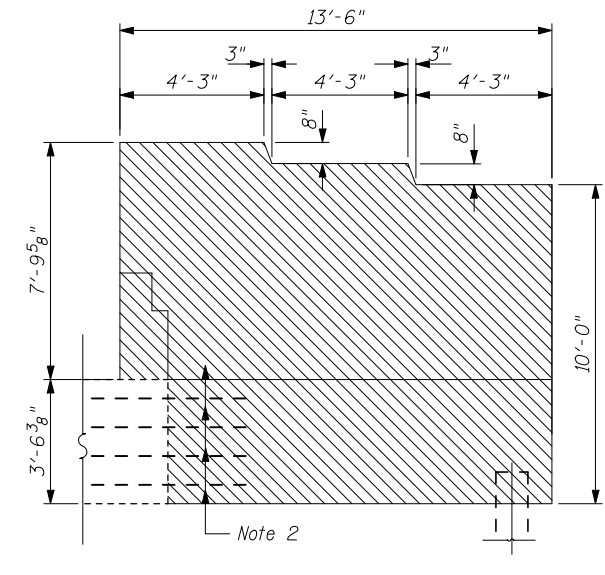
STATE OF ILLINOIS
DEPARTMENT OF TRANSPORTATION



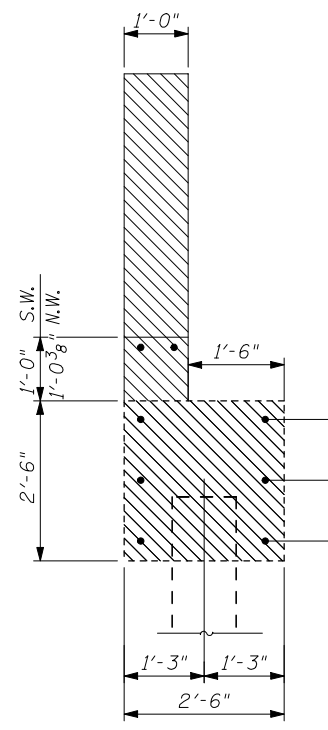
NORTH WING WALL ELEVATION



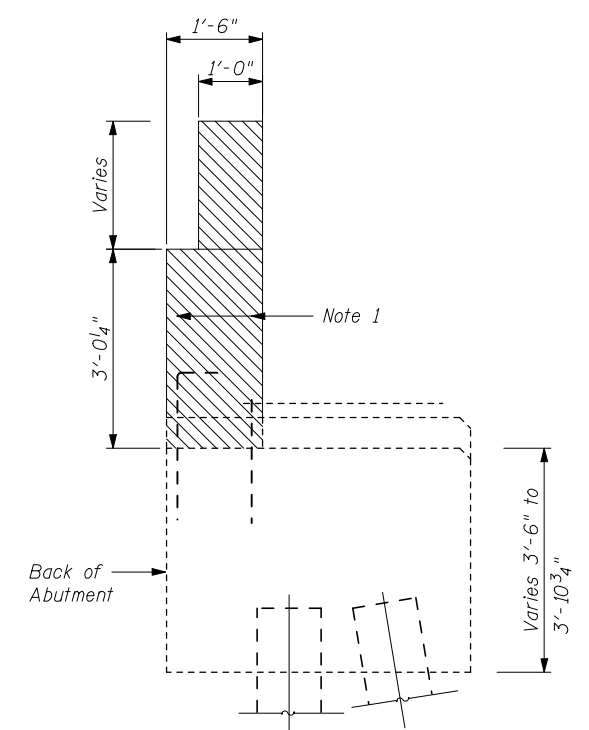
ELEVATION



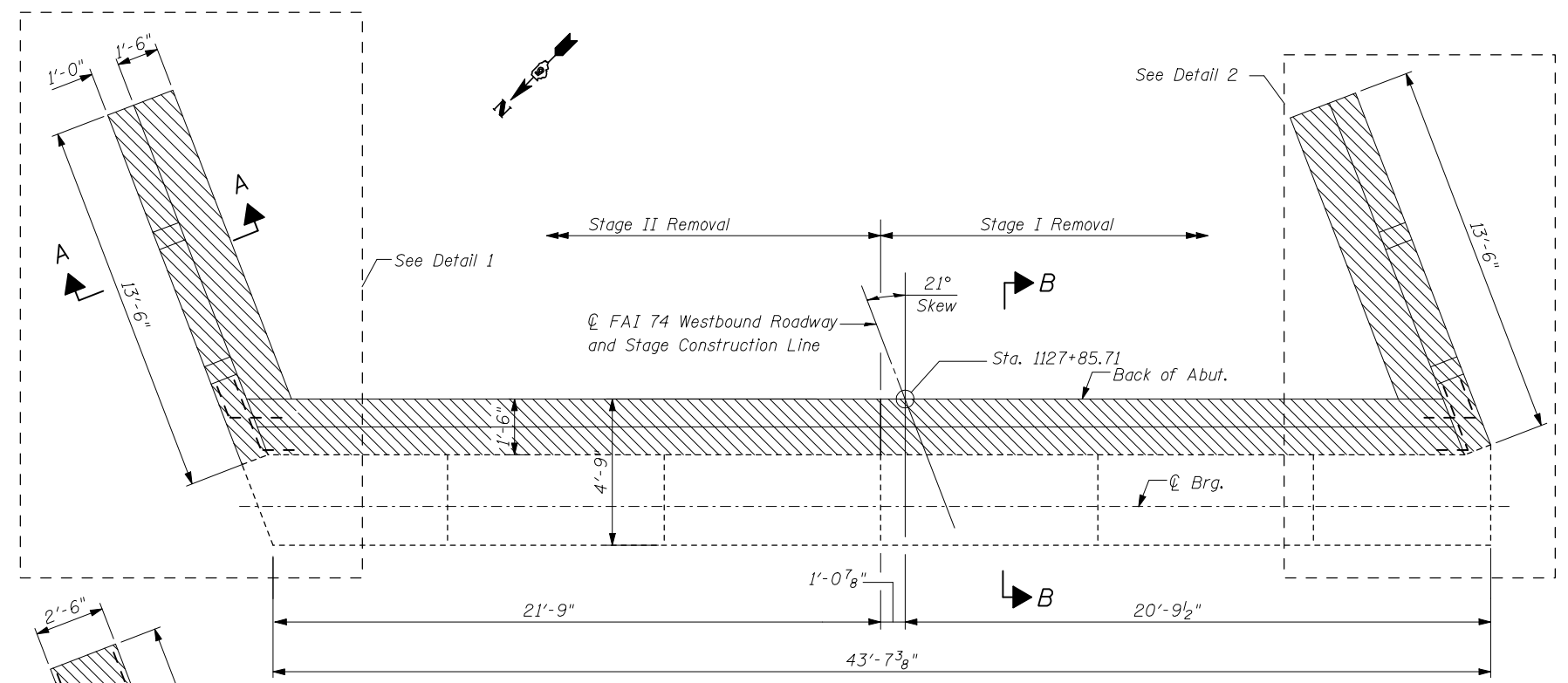
SOUTH WING WALL ELEVATION



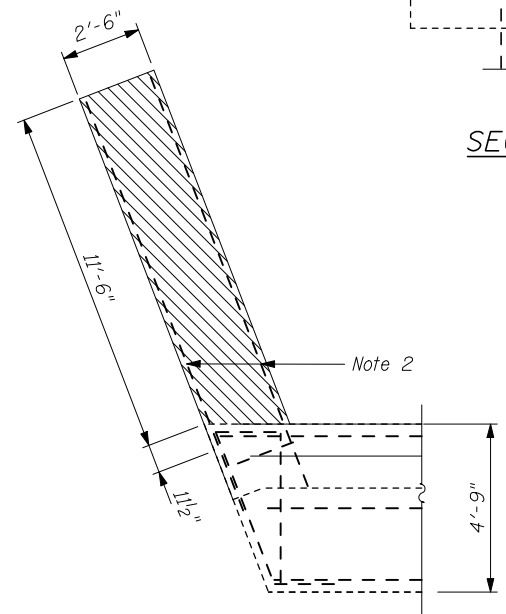
SECTION A-A



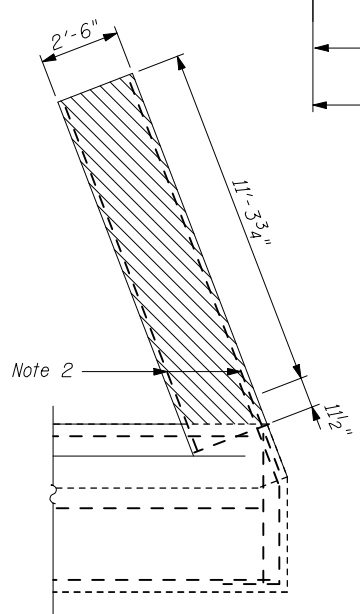
SECTION B-B



PLAN



DETAIL 1



DETAIL 2

LEGEND

- Removal Area
- N.W. North WingWall
- S.W. South WingWall

BILL OF MATERIAL

Item	Unit	Total
Concrete Removal	Cu. Yd.	23.7

- Note:
- Existing reinforcement shall be cleaned and incorporated into the new construction. Cost included with Concrete Removal.
 - Cut existing rebar 1 1/2" below surface of existing concrete to remain. Fill recess with mortar to protect existing rebar.

EAST ABUTMENT CONCRETE REMOVAL
STRUCTURE NO. 057-0129

SHEET NO. 21	F.A.I. RTE. 74	SECTION (57-22B-1)BR	COUNTY Mc LEAN	TOTAL SHEETS 46	SHEET NO. 31
26 SHEETS		CONTRACT NO. 70721			
FED. ROAD DIST. NO.		ILLINOIS FED. AID PROJECT			

THE UPCHURCH GROUP, INC.