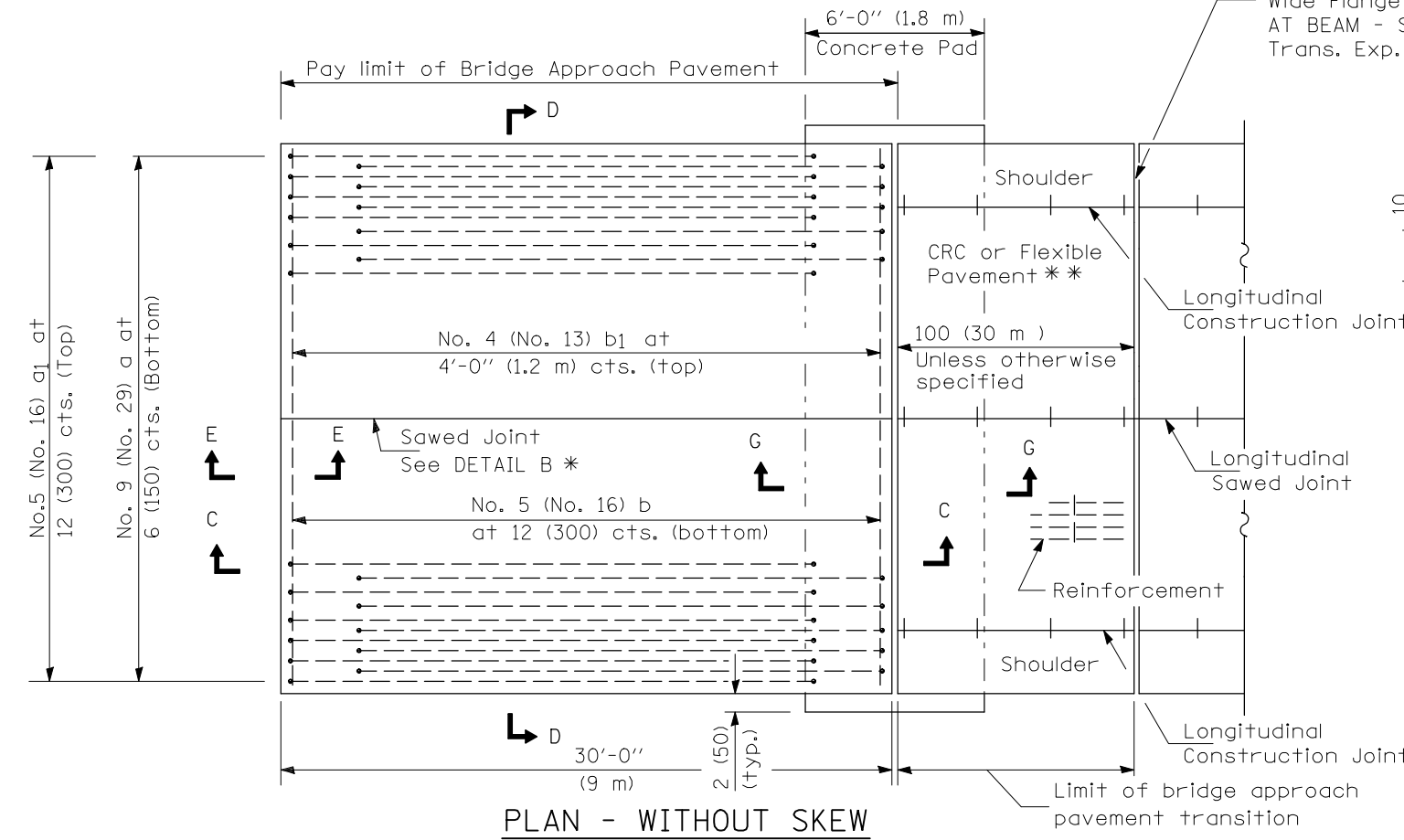


PLAN - WITH SKEW

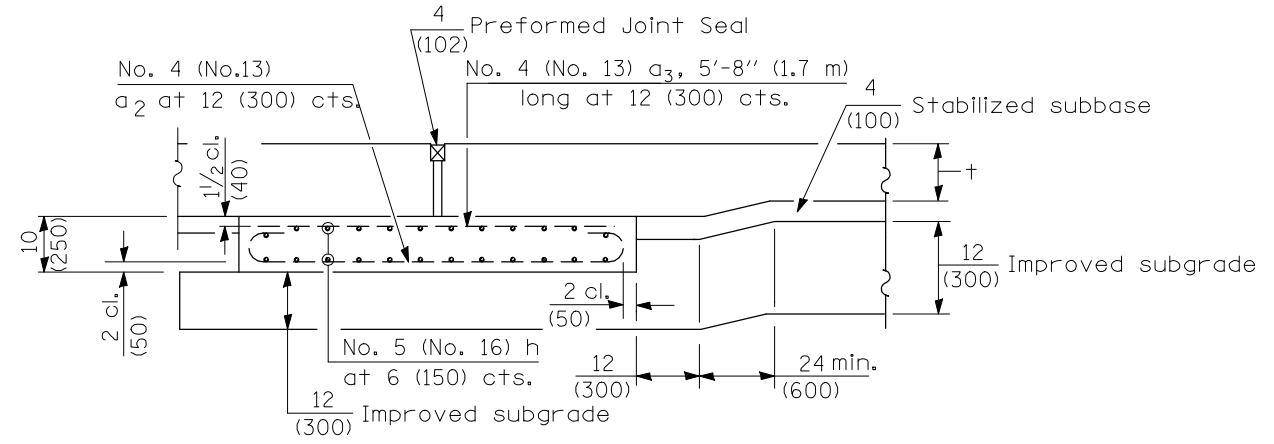
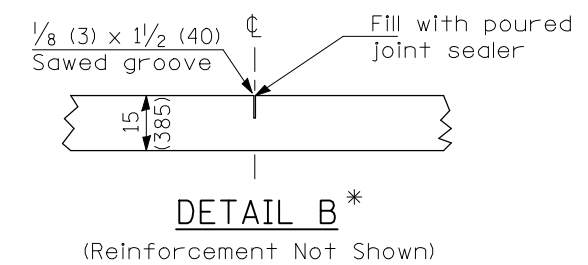


PLAN - WITHOUT SKEW

* Saw \perp or lane edge if poured two or more lane widths at a time.
 ** Omit Reinforcement, tie bars and Long. sawed Jt. for Flexible Pavement.

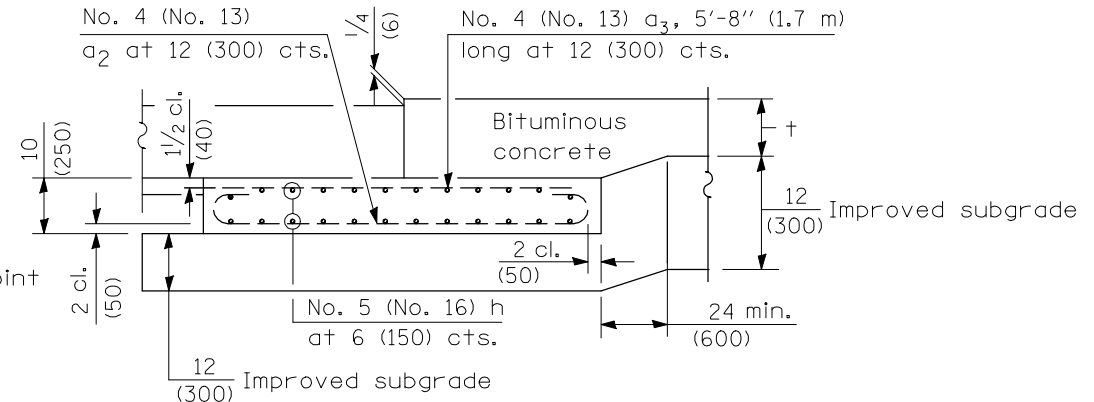
NEW CONSTRUCTION

Limit of bridge approach pavement transition
 Shoulder
 Reinforcement
 100'-0" (30 m) Unless otherwise specified
 CRC or Flexible Pavement **
 Longitudinal Sawed Joint
 Longitudinal Construction Joint



SECTION G-G - RIGID PAVEMENT
 (Showing reinforcement)

Rigid Pavement only:
 Wide Flange Beam Terminal Joint (See DETAIL AT BEAM - Standard 421101 or 421106 or 2 (50)
 Trans. Exp. Joint as detailed on Standard 420001.



SECTION G-G - FLEXIBLE PAVEMENT
 (Showing reinforcement)

GENERAL NOTES

THICKNESS-"t"=Thickness of Pavement.
 See Standard 421001 for reinforcement details not shown.
 See Standard 420001 for joint details not shown.
 All dimensions are in inches (millimeters) unless otherwise shown.

BRIDGE APPROACH PAVEMENT DETAIL		F.A.I. RTE.	SECTION	COUNTY	TOTAL SHEETS	SHEET NO.
SCALE:		74	(57-22B-1)BR	MCLEAN	46	37
SHEET NO. 1 OF 4 SHEETS		STA. TO STA.		CONTRACT NO. 70721		
ILLINOIS FED. AID PROJECT						