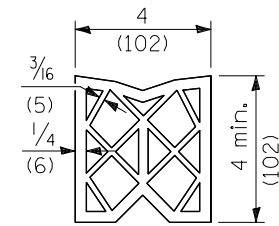
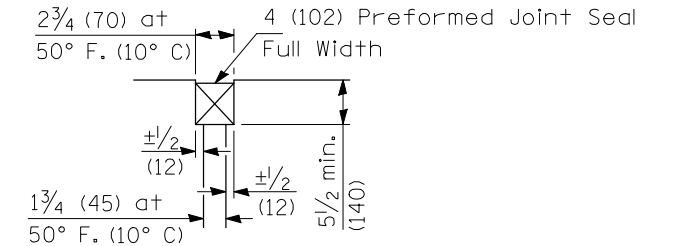


SECTION C-C

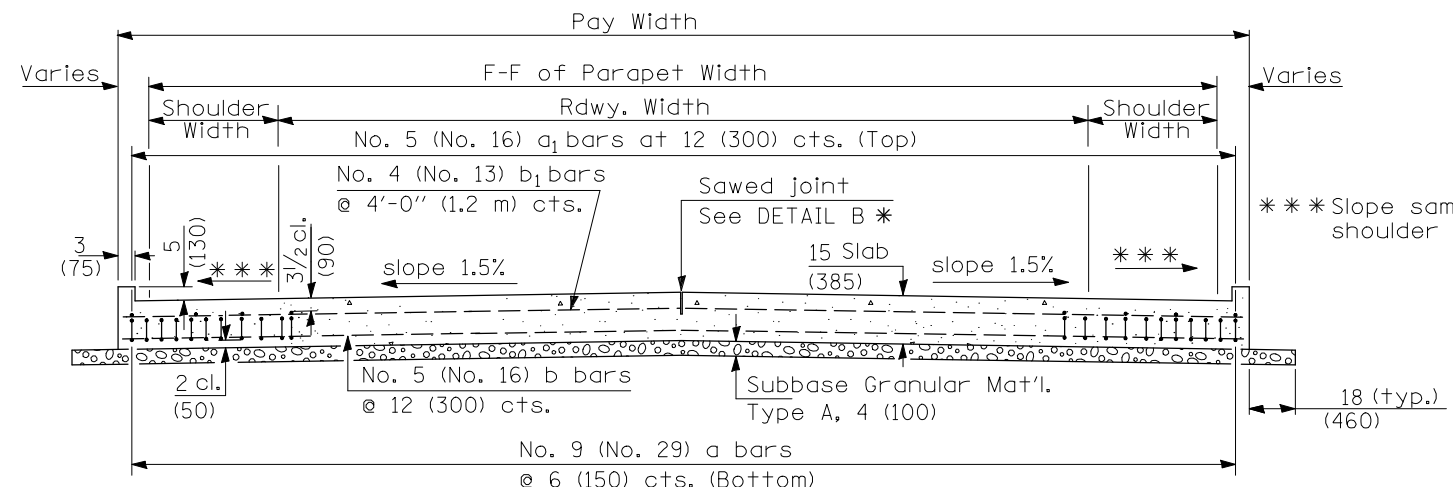
① Stagger No. 9 (No. 29) a bars as shown on plan - full width



PREFORMED JOINT SEAL



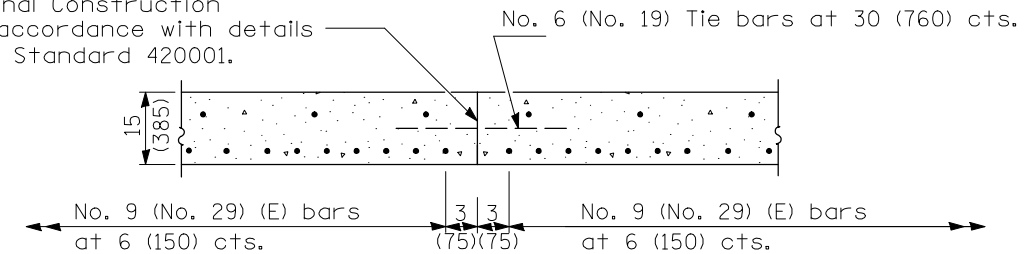
DETAIL A



SECTION D-D

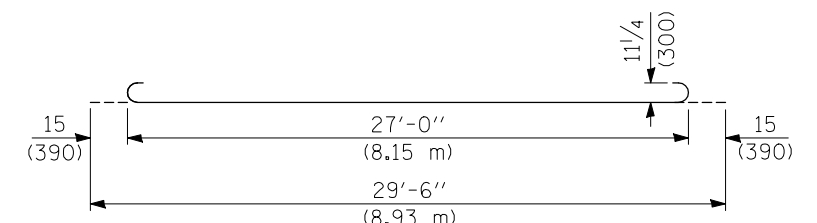
(See Plan for Dimensions not shown)

Longitudinal Construction Joint in accordance with details shown on Standard 420001.

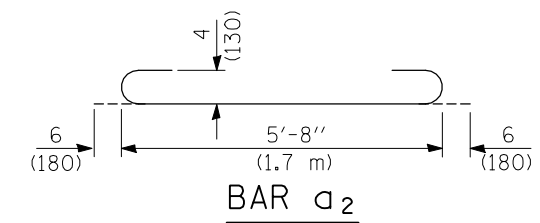


OPTIONAL LONGITUDINAL CONSTRUCTION JOINT

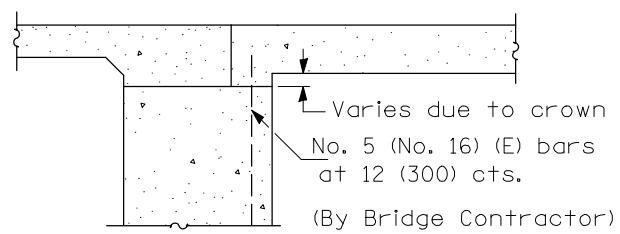
As approved by the Engineer, the Contractor may elect to reduce the widths of pour by use of the Optional Longitudinal Construction Joint shown. Joints shall be located at the edge of a traffic lane.



BAR a

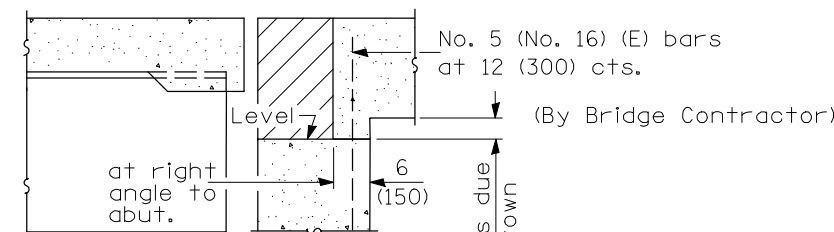


BAR a2



SECTION E-E

(Integral Abutments)



SECTION E-E

(Jointed Abutments)

DESIGN STRESSES
 $f_y = 60,000$ p.s.i. (400 MPa)
 $f'_c = 3,500$ p.s.i. (24 MPa)
 $n = 8.5$

BRIDGE APPROACH PAVEMENT DETAIL		F.A.I. RTE.	SECTION	COUNTY	TOTAL SHEETS	SHEET NO.
SCALE:		74	(57-22B-1)BR	MCLEAN	46	39
SHEET NO. 3 OF 4 SHEETS		CONTRACT NO. 70721		ILLINOIS FED. AID PROJECT		