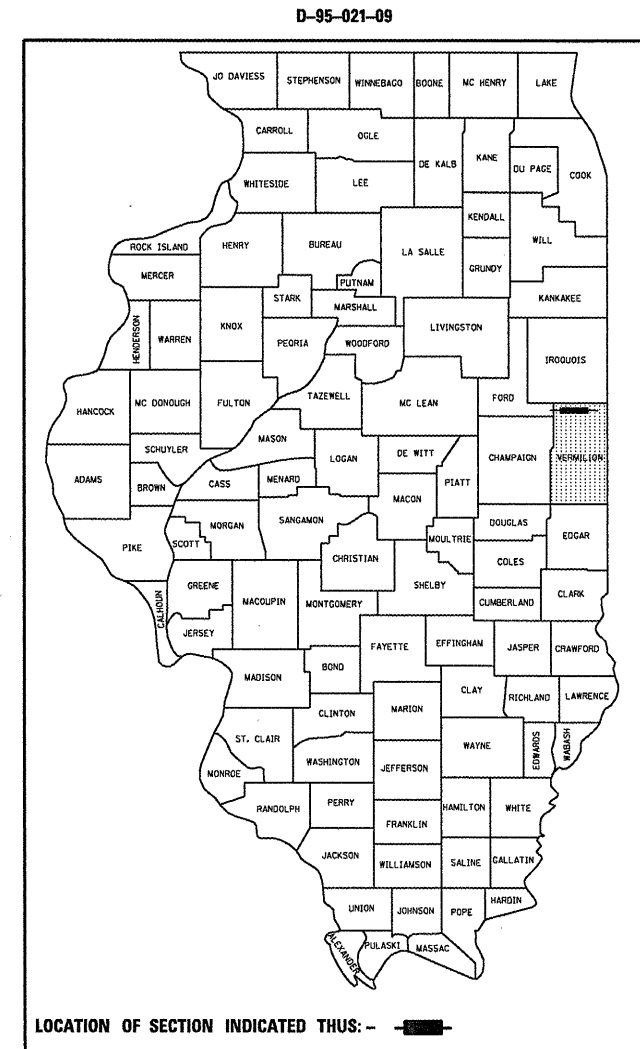


**STATE OF ILLINOIS**  
**DEPARTMENT OF TRANSPORTATION**  
**DIVISION OF HIGHWAYS**  
**PROPOSED**  
**HIGHWAY PLANS**

F.A.P. RTE.	SECTION	COUNTY	TOTAL SHEETS	SHEET NO.
697	2RS-3&46RS-8	Vermilion	43	1
		ILLINOIS	CONTRACT NO. 70764	

FOR INDEX OF SHEETS, SEE SHEET NO. 2  
 FOR SUMMARY OF QUANTITIES, SEE SHEET NO. 4 - 5

**F.A.P. ROUTE 697 (IL 9)**  
**SECTION 2RS-3&46RS-8**  
**RESURFACING (3P)**  
**VERMILION COUNTY**  
**FORD COUNTY LINE TO ECL OF HOOPESTON**  
**C-95-021-09**

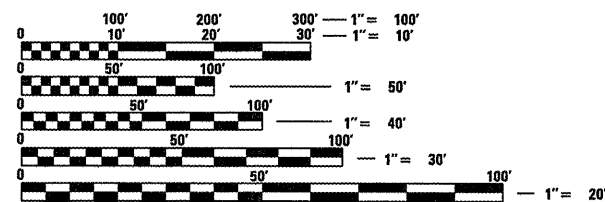


**CURRENT ADT**

LEG "A" 2,050 FORD COUNTY LINE TO 990E  
 LEG "B" 2,300 990E TO IL 1  
 LEG "C" 6,300 IL 1 TO RAILROAD  
 LEG "D" 3,650 RAILROAD TO STA. 1207+00

**DESIGN DESIGNATION**

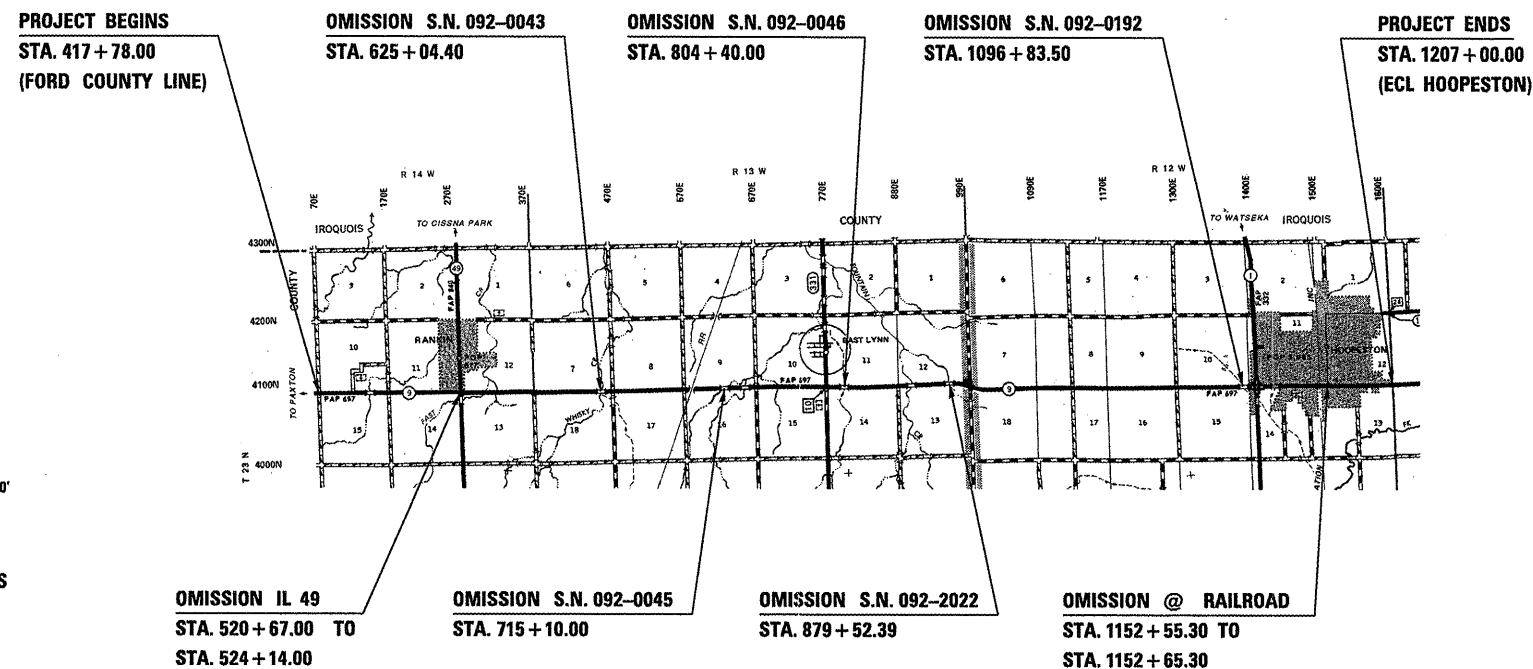
N/A



FULL SIZE PLANS HAVE BEEN PREPARED USING STANDARD ENGINEERING SCALES. REDUCED SIZED PLANS WILL NOT CONFORM TO STANDARD SCALES. IN MAKING MEASUREMENTS ON REDUCED PLANS, THE ABOVE SCALES MAY BE USED.

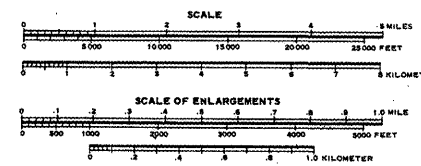
J.U.L.I.E.  
 JOINT UTILITY LOCATION INFORMATION FOR EXCAVATION  
 1-800-892-0123  
 OR 811

**PROJECT ENGINEER: NANCY FASIG**  
**PROJECT MANAGER: WILLIAM PARKER, JR.**  
 (217) 465-4181  
**CONTRACT NO. 70764**



**STATION EQUATIONS:**  
 656+84.40 BK = 657+00.00 AH  
 738+87.00 BK = 738+90.00 AH  
 907+08.75 BK = 907+52.38 AH

GROSS LENGTH = 78,922.00 FT. = 14.947 MILES  
 NET LENGTH = 78,053.00 FT. = 14.783 MILES



STATE OF ILLINOIS  
 DEPARTMENT OF TRANSPORTATION  
 DIVISION OF HIGHWAYS

SUBMITTED 4/10 20 09  
*Joseph E. Adams*  
 DEPUTY DIRECTOR OF HIGHWAYS, REGION ENGINEER  
May 1, 20 09  
*Charles G. Ingersoll*  
 ENGINEER OF DESIGN AND ENVIRONMENT  
May 1, 20 09  
*Christine M. Reed*  
 DIRECTOR OF HIGHWAYS, CHIEF ENGINEER

**PRINTED BY THE AUTHORITY**  
**OF THE STATE OF ILLINOIS**