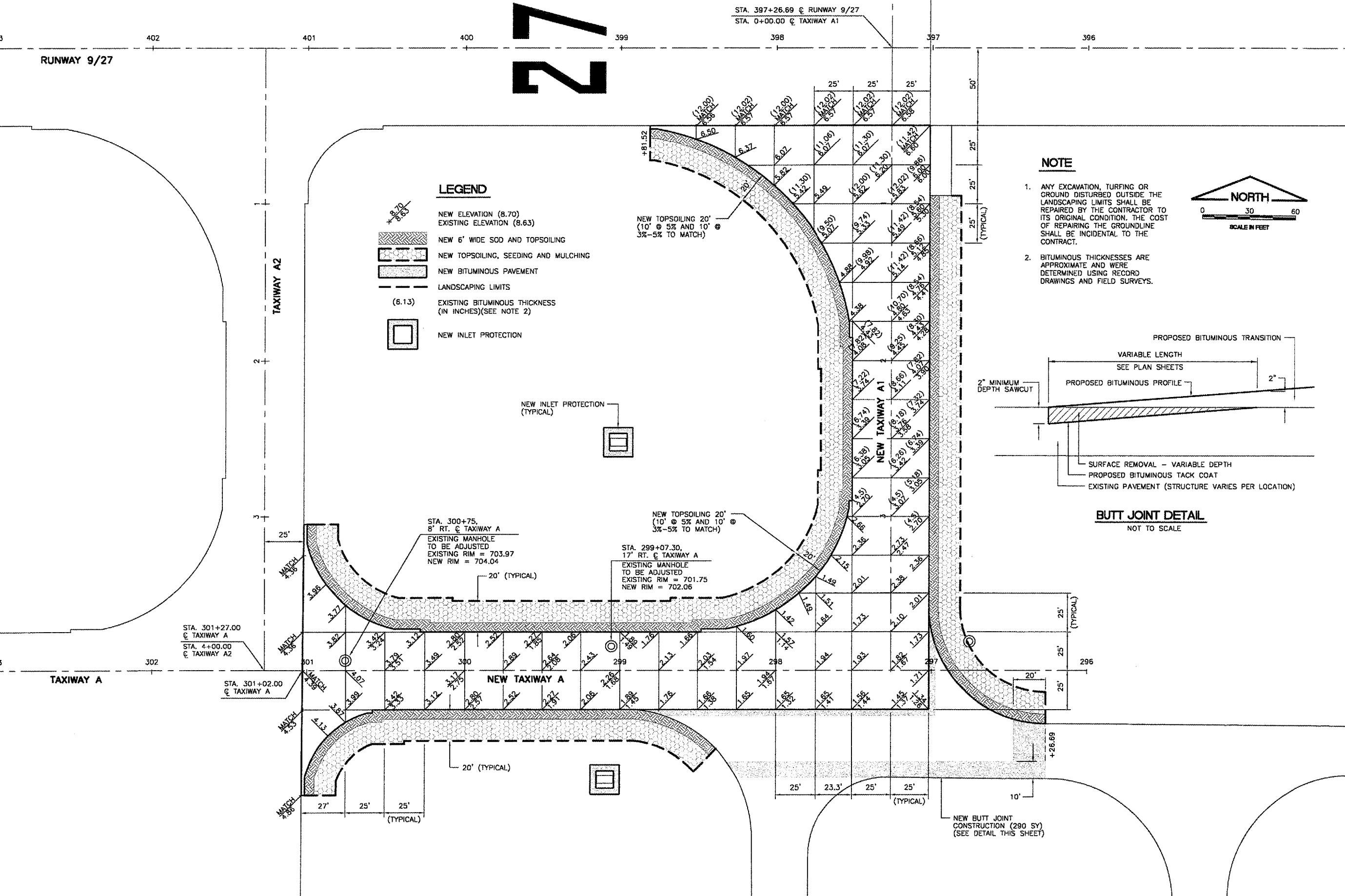


K:\Aurora\0428503 Tax A Ends Rehab\PH2\Draw\5
 FILE: ph2-grade-east.dwg
 LAYOUT: Layout1
 UPDATE BY: mkatz
 SURVEY BOOK #
 DATE: Mon 2/4/08 2:57pm
 XREF DWG: tbcnt.dwg
 tb.dwg
 tyend-base.dwg

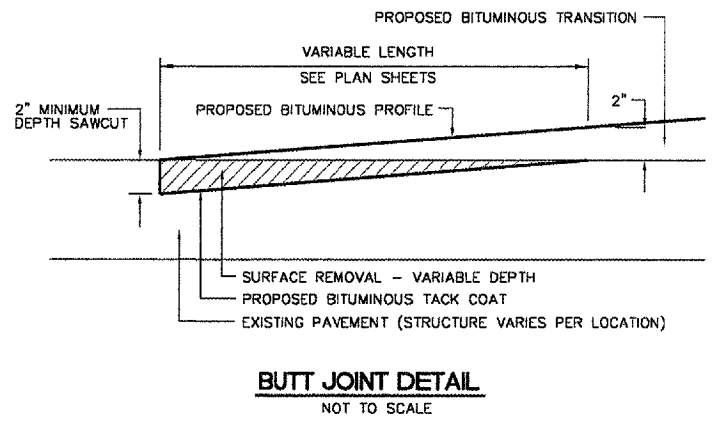


LEGEND

- NEW ELEVATION (8.70)
- EXISTING ELEVATION (8.63)
- NEW 6' WIDE SOD AND TOPSOILING
- NEW TOPSOILING, SEEDING AND MULCHING
- NEW BITUMINOUS PAVEMENT
- LANDSCAPING LIMITS
- (6.13) EXISTING BITUMINOUS THICKNESS (IN INCHES)(SEE NOTE 2)
- NEW INLET PROTECTION

NOTE

1. ANY EXCAVATION, TURFING OR GROUND DISTURBED OUTSIDE THE LANDSCAPING LIMITS SHALL BE REPAIRED BY THE CONTRACTOR TO ITS ORIGINAL CONDITION. THE COST OF REPAIRING THE GROUNDLINE SHALL BE INCIDENTAL TO THE CONTRACT.
2. BITUMINOUS THICKNESSES ARE APPROXIMATE AND WERE DETERMINED USING RECORD DRAWINGS AND FIELD SURVEYS.



REVISIONS

NUMBER	BY	DATE

0 1 2
 THIS BAR IS EQUAL TO 2"
 AT FULL SCALE (34X22).

**AURORA MUNICIPAL AIRPORT
 AURORA, ILLINOIS
 REHABILITATE AND STRENGTHEN TAXIWAY ALPHA
 ENDS AND CONNECTING TAXIWAYS - PHASE 2**

**GRADING AND LANDSCAPING PLAN -
 SHEET 1**

© Copyright GMT, Inc.
GMT
 CRAWFORD, MURPHY & TILLY, INC.
 CONSULTING ENGINEERS
 License No. 94-000613

DESIGN BY:	AAO
DRAWN BY:	JRO
CHECKED BY:	CAL
APPROVED BY:	
DATE:	10/31/07
JOB No:	07285-04
ILLINOIS PROJECT:	ARR-3770
A.I.P. PROJECT:	3-17-0003-836
FINAL SUBMITTAL	
SHEET 14 OF 23 SHEETS	