

PATH: K:\AuroraAp\0628503\Draw\Sh
 FILE: ph2-elecdt-1
 UPDATE BY: johse
 SURVEY BOOK #
 XREF DWG:
 XREF DWG:
 DATE: Wed 12/15/04 5:43pm

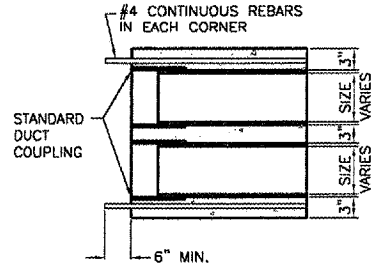
REVISIONS		
NUMBER	BY	DATE

0 1 2
 THIS BAR IS EQUAL TO 2" AT FULL SCALE (34X22).

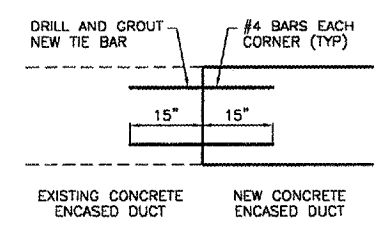
**AURORA MUNICIPAL AIRPORT
 AURORA, ILLINOIS
 REHABILITATE AND STRENGTHEN TAXIWAY ALPHA
 ENDS AND CONNECTING TAXIWAYS - PHASE 2**

ELECTRICAL DETAILS - SHEET 1

DESIGN BY: AB
 DRAWN BY: JRO
 CHECKED BY: AB
 APPROVED BY:
 DATE: 10/31/07
 JOB No: 07285-04
 ILLINOIS PROJECT: ARR-3770
 A.I.P. PROJECT: 3-17-0003-B36
FINAL SUBMITTAL
 SHEET 21 OF 23 SHEETS

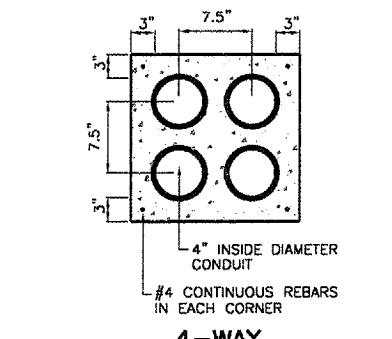


CONCRETE ENCASED DUCT END DETAIL
 NO SCALE



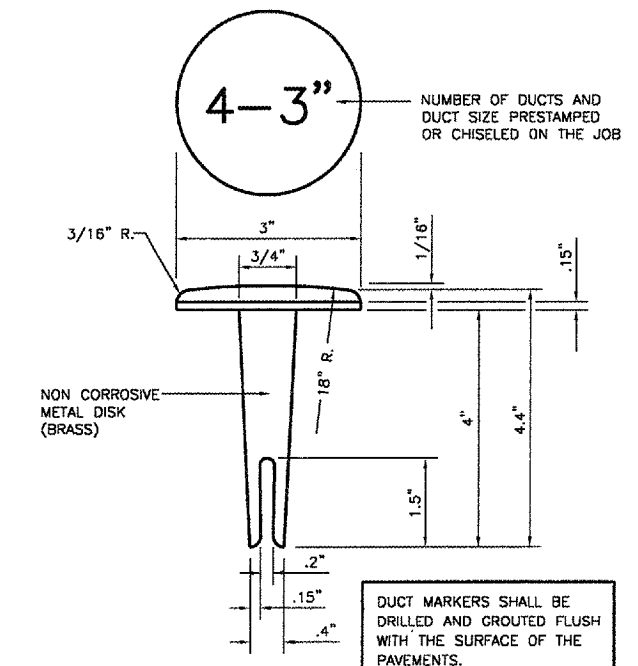
EXTENSION OF EXISTING DUCT
 NO SCALE

NOTE: COST OF CONNECTION SHALL BE CONSIDERED INCIDENTAL TO NEW DUCT.

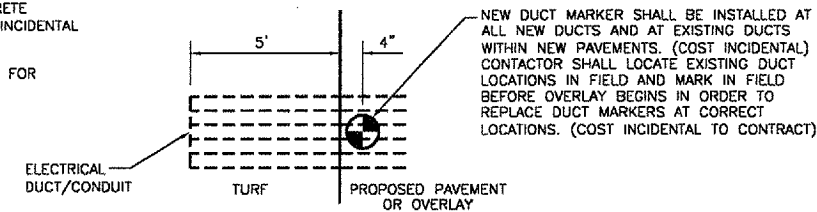


4-WAY CONCRETE ENCASED DUCT BANKS/SPLIT DUCT
 NOT TO SCALE

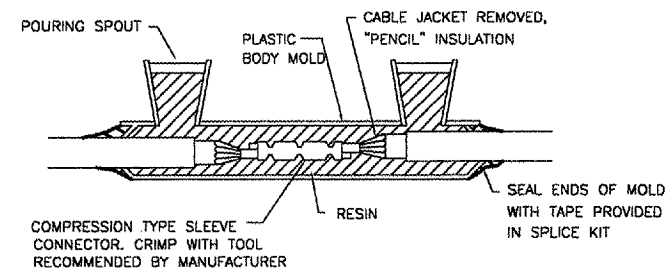
- NOTES:**
- DIMENSIONS ARE MINIMUM.
 - CONCRETE SHALL CONFORM TO ITEM 610.
 - ALL CONDUIT SHALL BE SCHEDULE 40 PVC.
 - TOP OF CONCRETE ENCASEMENT IN TURF AREAS SHALL NOT BE LESS THAN 24" BELOW FINISHED GRADE.
 - 4" SPLIT DUCT SHALL BE CONCRETE ENCASED WITH 3" MINIMUM CONCRETE SURROUNDING 4" CONDUIT. COST INCIDENTAL TO SPLIT DUCT.
 - PROVIDE PULL STRINGS AND CAPS FOR UNUSED DUCTS.



DUCT/CONDUIT MARKER DETAIL
 NOT TO SCALE

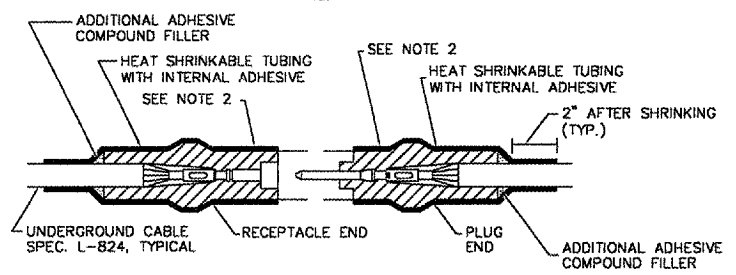


SPLICE CAN DETAIL IN TURF
 NOT TO SCALE



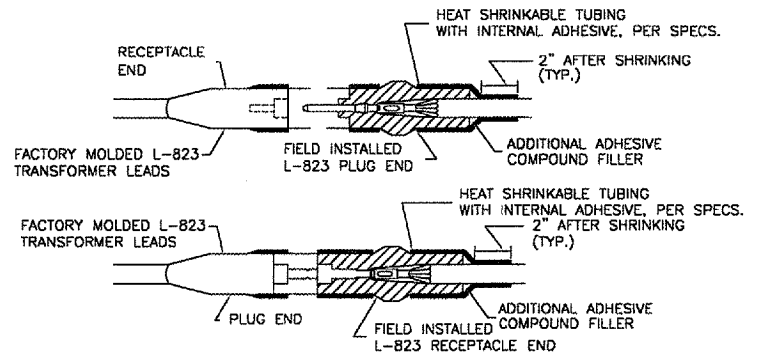
TYPE A - CABLE SPLICE

FOR SPLICES IN HOMERUNS AND FOR EXTENSIONS TO EXISTING CABLES ONLY
 N.T.S.



TYPE B - CABLE SPLICE

FOR SPLICES FOR USE AT JUNCTION OF HOMERUN WITH LOOP CIRCUIT
 N.T.S.

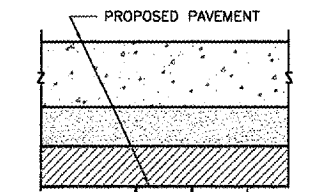


TYPE C AND D - CABLE SPLICE

FOR SPLICES AT RUNWAY/TAXIWAY LIGHTS AND SIGNS
 N.T.S.

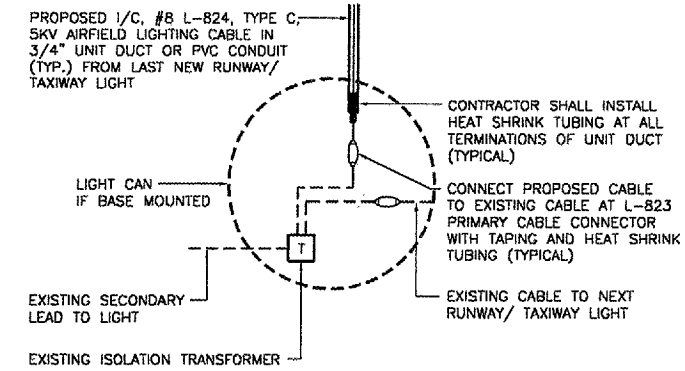
NOTES

- INSIDE DIAMETER OF CONNECTOR SHALL PROPERLY MATCH THE OUTSIDE DIAMETER OF CABLE.
- WRAP WITH AT LEAST ONE LAYER OF RUBBER OR SYNTHETIC RUBBER TAPE AND ONE LAYER OF PLASTIC TAPE, ONE-HALF LAPPED, EXTENDING AT LEAST 1-1/2 INCHES ON EACH SIDE OF JOINT.
- THE COST OF FURNISHING AND INSTALLING ALL SPLICE MATERIALS SHALL BE INCIDENTAL TO THE ASSOCIATED CABLE ITEMS.
- THE CONTRACTOR SHALL HAVE A MINIMUM OF TWO (2) TYPE A SPLICE KITS ON THE JOB SITE AT ALL TIMES FOR EMERGENCY REPAIRS.

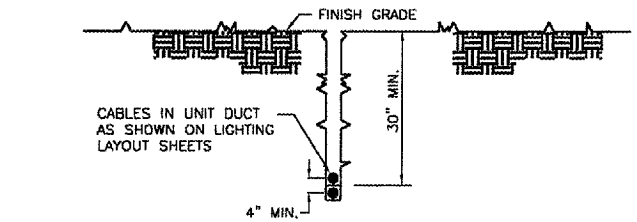


GRS CONDUIT UNDER P.C.C. PAVEMENT DETAIL
 NOT TO SCALE

NEW DUCT BANK/CONDUIT SHALL BE INSTALLED AT AN ELEVATION THAT WILL NOT CONFLICT WITH EXISTING OR NEW UTILITIES INCLUDING STORM SEWER, UNDERDRAIN, CONDUIT, DUCT, GAS, WATERMAIN, PHONE, ELECTRICAL AT NO ADDITIONAL COST TO THE CONTRACT.

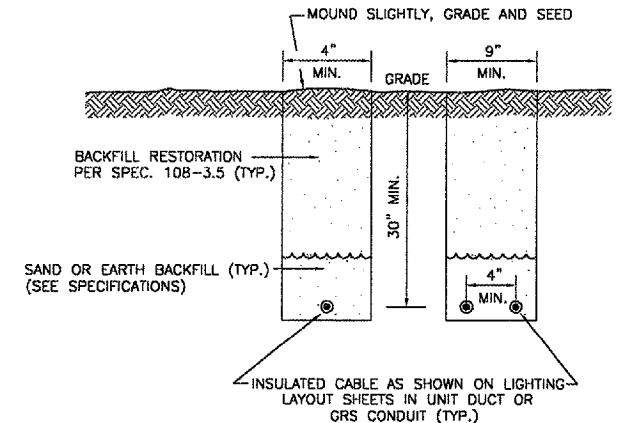


RUNWAY/TAXIWAY LIGHTING CIRCUIT CONNECTION DETAIL
 NOT TO SCALE



CABLE IN UNIT DUCT - PLOWED
 NOT TO SCALE

CONTRACTOR SHALL HAVE THE OPTION TO TRENCH OR PLOW UNIT DUCT. NO ADDITIONAL PAYMENT SHALL BE MADE FOR TRENCHING.

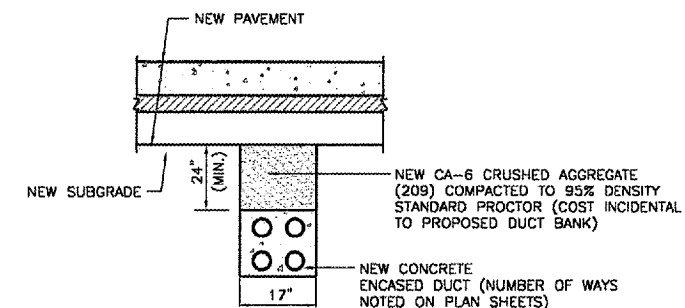


TRENCH DETAIL
 NOT TO SCALE

NOTE: AT CONTRACTOR'S OPTION, CABLE PLOWING MAY BE USED IN LIEU OF TRENCHING.

NOTES

- TRENCHES WITH MORE THAN 2 CABLES SHALL BE INCREASED 3" IN WIDTH FOR EACH ADDITIONAL CABLE. IF SPECIFIED ON PLANS, TWO PARALLEL TRENCHES MAY BE CONSTRUCTED.
- DEPTH OF TRENCHES SHALL BE AS SHOWN UNLESS OTHERWISE SPECIFIED ON THE PLANS.
- SAND BACKFILL SHALL BE USED IF THE EXISTING SOIL DOES NOT MEET THE BACKFILL REQUIREMENTS.
- ALL DISTURBED SURFACES SHALL BE RESTORED TO THEIR ORIGINAL CONDITION. COST IS INCIDENTAL.



CONCRETE ENCASED DUCT BACKFILL
 NOT TO SCALE