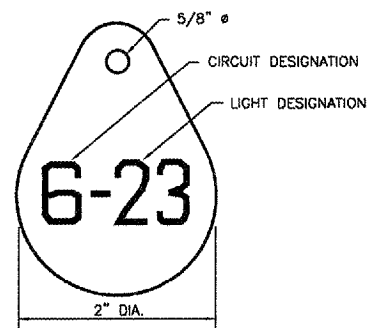


HOLD LINE / TAXIWAY GUIDANCE SIGN L-858, SIZE 2, STYLE 2, CLASS 2
NOT TO SCALE



LIGHT IDENTIFICATION DETAIL
NOT TO SCALE

AIRFIELD SIGNAGE SCHEDULE						
SIGN NUMBER	PROPOSED SIGN FACE	PROPOSED SIGN LEGEND	PROPOSED SIGN TYPE	SIGN PANEL SIZE	EXISTING SIGN LEGEND	COMMENTS
S1	N S	LV BLANK	3,2 0	SEE NOTE 2	N/A	NEW SIGN PANEL 5 CHARACTER
S2	N S	LV A1 9-27	0,2 2,1	SEE NOTE 2	LV A1 27	NEW SIGN PANEL 6 CHARACTER
S3	N S	C/N C BLANK	N/C 2,0	9'x2'	6-22 18 C	MODIFY EXISTING SIGN PANEL
S4	E W	C/N A C	N/C 2,3	9'x2'	6-18-9E A C	MODIFY EXISTING SIGN PANEL
S5	E W	BLANK N/C	0,2 N/C	9'x2'	6 A 18-36	MODIFY EXISTING SIGN PANEL
S6	E W	BLANK N/C	0,2 N/C	11'x2'	6 A 15-33	MODIFY EXISTING SIGN PANEL
S7	N S	LV N/C	3,2,3 N/C	9'x2'	LV 9-27 B	MODIFY EXISTING SIGN PANEL
S8	N S	LV N/C	0,2 N/C	9'x2'	LV B 9-27	MODIFY EXISTING SIGN PANEL
S9	N S	C/N B BLANK	N/C 2,0	12'x2'	6-22 15 B	MODIFY EXISTING SIGN PANEL
S10	N S	LV BLANK	3,2 0	SEE NOTE 2	N/A	NEW SIGN PANEL 5 CHARACTER
S11	N S	LV N/C	0,2 N/C	9'x2'	LV A1 9-27	MODIFY EXISTING SIGN PANEL
S12	N S	LV BLANK	2,3 0	SEE NOTE 2	N/A	NEW SIGN PANEL 4 CHARACTER
S13	N S	LV A7 9-27	0,2 2,1	SEE NOTE 2	LV A7 9-27	NEW SIGN PANEL 6 CHARACTER
S14	E W	C A	3,2 2	SEE NOTE 2	N/A	NEW SIGN PANEL 4 CHARACTER
S15	E W	C P	3,2 2	SEE NOTE 2	N/A	NEW SIGN PANEL 4 CHARACTER
S16	E W	BLANK N/C	0,2 N/C	11'x2'	6 P 18-36	MODIFY EXISTING SIGN PANEL
S17	E W	C/N P BLANK	N/C 2,0	9'x2'	6 P RMP	MODIFY EXISTING SIGN PANEL

SIGNAGE NOTES

- ALL SIGNS ARE 2-SIDED SIGNS.
- TRANSFORMER WATTAGE AS RECOMMENDED BY MANUFACTURER.
- LIGHTED SIGNS SHALL BE BASE MOUNTED ONLY.
- UNIT DUCT SHALL BE TERMINATED IN THE CAN AND SEALED TO THE CABLE WITH HEAT SHRINK AS SPECIFIED.
- THE NUMBER OF MODULES PER SIGN SHALL BE AS RECOMMENDED BY THE MANUFACTURER.
- CONTRACTOR SHALL SUBMIT DETAILED SHOP DRAWING INCLUDING SIGN, COLOR, SIZE AND PROPOSED LEGEND, IN ENOUGH DETAIL AND DETERMINE PROPOSED SPACING AND OTHER INFORMATION REQUIRED BY SPECIAL PROVISIONS. CONTRACTOR TO VERIFY PROPOSED SIGN LOCATIONS AND ORIENTATIONS WITH RESIDENT ENGINEER PRIOR TO INSTALLATION.

NOTES

- INSTALL A NONCORROSIVE DISC OF 2" MINIMUM DIAMETER WITH THE NUMBER PERMANENTLY STAMPED, CUT OUT, OR ENGRAVED UNDER THE HEAD OF THE BASE PLATE BOLT OR ATTACHED TO LIGHT FLANGE WITH A SET SCREW.
- NUMERALS SHOWN ARE FOR ILLUSTRATIVE PURPOSES ONLY. ALL EXISTING AND PROPOSED TAXIWAY AND RUNWAY LIGHTS SHALL BE TAGGED AS DIRECTED BY THE RESIDENT ENGINEER. ALL LIGHTS ON EXISTING CIRCUITS THAT HAVE LIGHTING IMPROVEMENTS (NEW OR RELOCATED LIGHTS) SHALL BE RETAGGED.
- COST OF TAGGING LIGHTS SHALL NOT BE PAID FOR SEPARATELY BUT SHALL BE CONSIDERED INCIDENTAL TO THE CONTRACT.

PROPOSED SIGN TYPE LEGEND

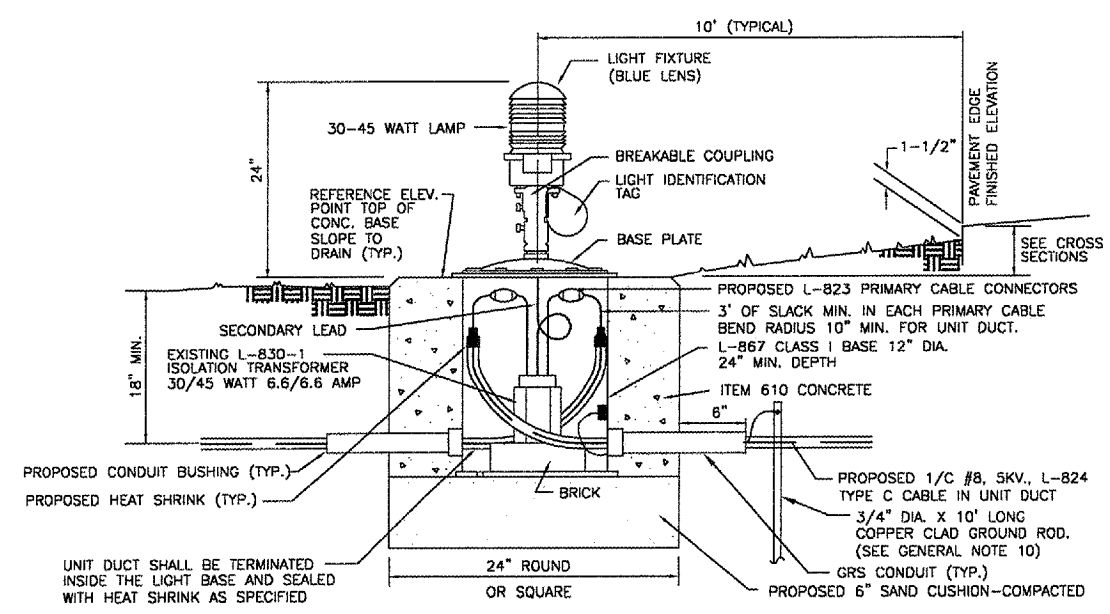
- 0 — BLANK PANEL — BLACK
- 1 — RUNWAY/TAXIWAY HOLDLINE — WHITE LEGEND ON RED BACKGROUND
- 2 — LOCATION SIGN — YELLOW LEGEND ON BLACK BACKGROUND
- 3 — DIRECTION SIGN — BLACK LEGEND ON YELLOW BACKGROUND
- 4 — REMAINING DISTANCE — WHITE LEGEND ON BLACK BACKGROUND
- N/C — NO CHANGE

NOTES

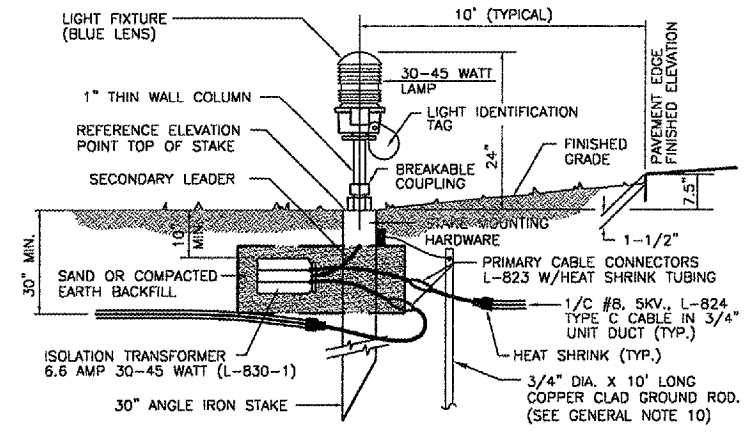
- EXCHANGING OF EXISTING PANELS BETWEEN SIGNS WILL BE INCIDENTAL TO THE COST OF RELOCATING OR ADJUSTING THE SIGN. ANY EXISTING PANELS THAT ARE NOT USED SHALL BE TURNED OVER TO THE AIRPORT.
- PROPOSED GUIDANCE SIGNS PANEL SIZE WILL BE BASED ON THE MANUFACTURER'S RECOMMENDATION. CONTRACTOR TO VERIFY SIZE OF PANEL BEFORE SUBMITTING SHOP DRAWINGS OR ORDERING MATERIALS.
- EXISTING SIGN TO BE REMOVED AND REPLACED WITH NEW SIGN.

GENERAL NOTES:

- THE CONCRETE BASE FOR BASE MTD. LIGHTS SHALL BE TROWEL FINISHED WITH A 45° BEVELED EDGE. SLOPE TO DRAIN (610).
- TRANSFORMER HOLDER SHALL BE ANY COMMERCIALY AVAILABLE BRICK.
- BREAKING GROOVE COUPLINGS SHALL NOT BE OVER 1" ABOVE GROUND LINE.
- ISOLATION TRANSFORMERS COME WITH A FACTORY INSTALLED PLUG (TYPE 1, CLASS A, STYLE 2) AND RECEPTACLE (TYPE 1, CLASS A, STYLE 9). A TYPE 1, CLASS B, STYLE 3 PLUG AND TYPE 1, CLASS B, STYLE 10 RECEPTACLE SHALL BE INSTALLED ON THE 1/C, No. B, 5000 V., L-824 TYPE C CABLES FOR CONNECTION TO EACH TRANSFORMER.
- TO FURTHER REDUCE THE POSSIBILITY OF WATER/MOISTURE ENTRANCE INTO THE CONNECTOR BETWEEN THE CABLE AND THE FIELD ATTACHED CONNECTOR, IT IS REQUIRED THAT A HEAT SHRINKABLE TUBING WITH INTERNAL ADHESIVE BE APPLIED OVER THE ENTIRE CABLE CONNECTOR.
- ALL SIGNS, LIGHTS, CABLES AND TRANSFORMERS TO BE REMOVED SHALL REMAIN THE PROPERTY OF THE AIRPORT. AT THE DISCRETION OF THE AIRPORT DIRECTOR, THE CONTRACTOR MAY BE REQUIRED TO DISPOSE OF THESE MATERIALS OFFSITE AT NO ADDITIONAL COST.
- TAXIWAY LIGHTS SHALL HAVE A BLUE LENS, RUNWAY LIGHTS SHALL HAVE A CLEAR OR 180° AMBER/CLEAR LENS AS DESIGNATED ON PLANS.
- DUCT MARKERS SHALL BE INSTALLED AT EVERY NEW DUCT AND AT EVERY EXISTING DUCT USED FOR THIS PROJECT.
- CONTRACTOR SHALL HAVE THE OPTION TO TRENCH OR PLOW UNIT DUCT. NO ADDITIONAL PAYMENT SHALL BE MADE FOR TRENCHING.
- INSTALL 1/C #6 AWG BARE COPPER GROUND JUMPER CONNECTED TO GROUND LUG INSIDE BASE CAN OR STAKE AND EXOTHERMICALLY WELDED TO GROUND ROD.



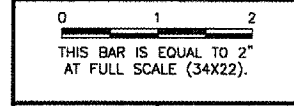
NEW/ADJUSTED/RELOCATED BASE MOUNTED MEDIUM INTENSITY TAXIWAY LIGHT
NOT TO SCALE



NEW/ADJUSTED/RELOCATED STAKE MOUNTED MEDIUM INTENSITY TAXIWAY LIGHT
NOT TO SCALE

REVISIONS

NUMBER	BY	DATE



AURORA MUNICIPAL AIRPORT
AURORA, ILLINOIS
REHABILITATE AND STRENGTHEN TAXIWAY ALPHA ENDS AND CONNECTING TAXIWAYS - PHASE 2
ELECTRICAL DETAILS - SHEET 2

© Copyright CMT, Inc.
CMT
 CRAWFORD, MURPHY & TILLY, INC.
 CONSULTING ENGINEERS
 License No. 184-000633

DESIGN BY:	AB
DRAWN BY:	JRO
CHECKED BY:	AB
APPROVED BY:	
DATE:	10/31/07
JOB No:	07285-04
ILLINOIS PROJECT:	ARR-3770
A.I.P. PROJECT:	3-17-0003-836
FINAL SUBMITTAL	
SHEET 22 OF 23 SHEETS	