

CONSTRUCTION PLANS

FOR

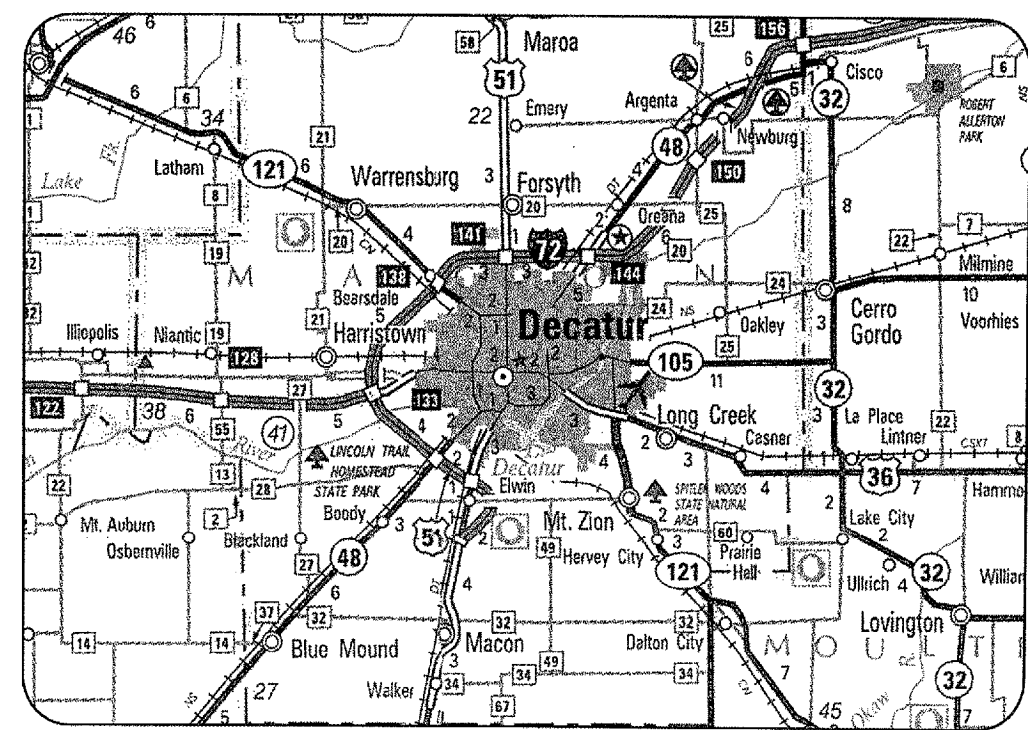
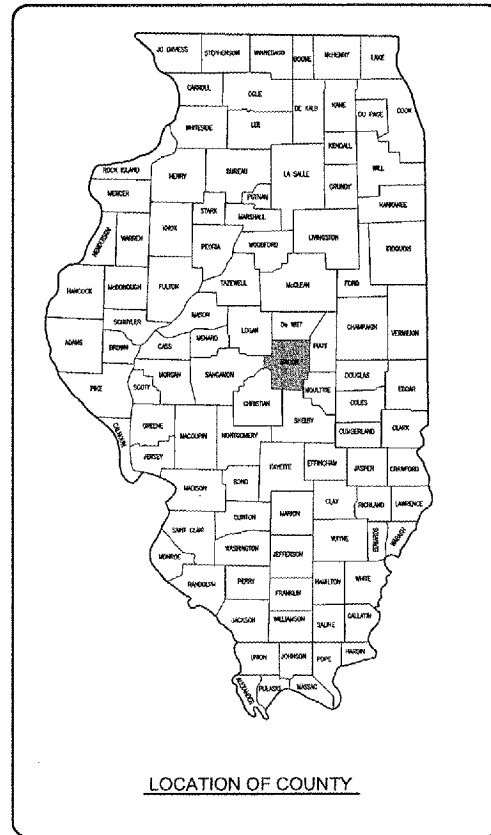
DECATUR AIRPORT

DECATUR, MACON COUNTY, ILLINOIS

CONSTRUCT WATER MAIN

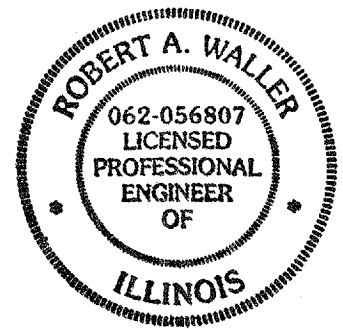
SCOPE OF WORK

THIS PROJECT CONSISTS OF INSTALLING AN 8-INCH WATER MAIN LOOP AND THE CONSTRUCTION OF INDIVIDUAL WATER SERVICES TO MULTIPLE AIRPORT OWNED STRUCTURES. ASSOCIATED WORK INCLUDES EXCAVATION, BACKFILL, TESTS, BENDS, VALVES, FIRE HYDRANTS, SEEDING, MULCHING, AND OTHER INCIDENTAL ITEMS.



LOCATION

ILL. PROJ.: DEC-3801
 A.I.P. PROJ.: 3-17-00xx-xx
 LATITUDE: 39° 50' 05"
 LONGITUDE: 88° 51' 59"
 ELEVATION: 682.0' M.S.L.
 DATE: APRIL 18, 2008



HANSON
 Hanson Professional Services Inc.

Submitted by *[Signature]* PE ENG'R
 Date Submitted APRIL 18, 2008
 Lic. Exp. Date NOVEMBER 30, 2009

DECATUR AIRPORT
 DECATUR PARK DISTRICT
 DECATUR, ILLINOIS

Approved *[Signature]* AIRPORT DIRECTOR
 Date 15 Apr 08

DATE	REVISION	BY

DECATUR AIRPORT
 DECATUR, ILLINOIS

A.I.P. PROJ.: 3-17-0033-XX
 I.L. PROJ.: DEC-3801

FILE PROJECT NO.	DATE	BY	REVISION
07A0080D_0800	03/12/08	RAW	RAW
R-001CVR.DWG	03/12/08	BAK	BAK
NOT TO SCALE	03/12/08	RAW	RAW

HANSON
 Hanson Professional Services Inc.
 1525 South Sixth Street
 Springfield, Illinois 62705-2886
 Offices Nationwide

CONSTRUCT WATER MAIN
 COVER SHEET

APR 18, 2008 1:27 PM WALLER00723
 N:\AIRPORTS\DECATUR\07A0080D\CAD\SHEETS\19-001CVR.DWG - COVER

DE069

DATE	REVISION	BY

SUMMARY OF QUANTITIES

ITEM NO.	DESCRIPTION	UNIT	TOTAL QUANTITIES	AS BUILT QUANTITIES
AR110014	4" DIRECTIONAL BORE	L.F.	172	
AR150510	ENGINEER'S FIELD OFFICE	L.S.	1	
AR150530	TRAFFIC MAINTENANCE	L.S.	1	
AR208910	REMOVE & REPLACE AGGREGATE BASE	S.Y.	88	
AR401910	REMOVE & REPLACE BIT. PAVEMENT	S.Y.	418	
AR501910	REMOVE & REPLACE PCC PAVEMENT	S.Y.	49	
AR620520	PAVEMENT MARKING - WATERBORNE	S.F.	100	
AR701830	TRENCH BACKFILL	C.Y.	1,085	
AR760508	8" DUCTILE IRON WATER MAIN	L.F.	2,049	
AR760718	18" STEEL CASING	L.F.	90	
AR760800	FIRE HYDRANT	EA.	2	
AR760830	WATER VALVE	EA.	4	
AR760840	IRON FITTINGS	LBS.	250	
AR760905	REMOVE FIRE HYDRANT	EA.	2	
AR760907	REMOVE WATER VALVE	EA.	3	
AR800460	12" X 8" TAPPING VALVE & SLEEVE	EA.	2	
AR800461	1" RPZ BACKFLOW PREVENTER	EA.	2	
AR800462	WATER SERVICE-LONG	EA.	5	
AR800463	WATER SERVICE-SHORT	EA.	5	
AR800464	RECONNECT WATER SERVICE	EA.	10	
AR800465	FILL EXISTING WATER MAIN	C.Y.	13	
AR901510	SEEDING	AC.	1	
AR908510	MULCHING	AC.	1	

INDEX TO SHEETS

SHEET NO.	DESCRIPTION
1	COVER SHEET
2	SUMMARY OF QUANTITIES AND INDEX TO SHEETS
3	PROPOSED SAFETY PLAN
4	PROPOSED CONSTRUCTION PLAN - GA RAMP AREA
5	PROPOSED CONSTRUCTION PLAN - GA RAMP AREA
6	PROPOSED CONSTRUCTION PLAN - NORTHWEST QUADRANT AREA
7	PROPOSED PLAN AND PROFILE SOUTH LEG, STA. 0+00 TO STA. 5+00
8	PROPOSED PLAN AND PROFILE NORTH SOUTH LEG, STA. 5+00 TO STA. 9+60
9	PROPOSED PLAN AND PROFILE NORTH SOUTH LEG, STA. 9+60 TO STA. 14+60
10	PROPOSED PLAN AND PROFILE NORTH SOUTH LEG, STA. 14+60 TO STA. 16+60
11	PROPOSED PLAN AND PROFILE NORTH LEG, STA. 0+00 TO STA. 5+00
12	PROPOSED WATER MAIN DETAIL SHEET 1
13	PROPOSED WATER MAIN DETAIL SHEET 2
14	PROPOSED WATER MAIN DETAIL SHEET 3
15	PROPOSED WATER MAIN DETAIL SHEET 4



DECATUR, ILLINOIS

IL PROJ.: DEC-3801 A.I.P. PROJ.: 3-17-0033-XX

I.D. Project No. 07A0060D_0800
 Filename: R-002FLP.DWG
 Scale: NOT TO SCALE
 Date: 03/12/08

LAYOUT	RAW	03/12/08
DRAWN	BAK	03/12/08
REVIEWED	JR	04/18/08



HANSON
 Hanson Professional Services Inc.
 1525 South Sixth Street
 Springfield, Illinois 62703-2886
 Offices Nationwide

CONSTRUCT
 WATER MAIN
 SUMMARY OF QUANTITIES
 AND
 INDEX TO SHEETS

SCOPE OF WORK

THIS PROJECT CONSISTS OF INSTALLING AN 8-INCH WATER MAIN LOOP AND THE CONSTRUCTION OF INDIVIDUAL WATER SERVICES TO MULTIPLE AIRPORT OWNED STRUCTURES. ASSOCIATED WORK INCLUDES EXCAVATION, BACKFILL, TESTS, BENDS, VALVES, FIRE HYDRANTS, SEEDING, MULCHING, AND OTHER INCIDENTAL ITEMS.

AIRPORT SECURITY NOTE

AIRPORT SECURITY WILL BE MAINTAINED AT ALL TIMES. THE CONTRACTOR WILL CLOSE THE CONTACTOR ENTRANCE GATE WHEN CONTINUOUS HAULING OPERATIONS ARE NOT IN PROGRESS AND WILL ENSURE THE GATE IS LOCKED AT THE END OF EACH WORKING DAY.

UTILITY NOTE

THE CONTRACTOR SHALL CONTACT ALL UTILITY COMPANIES AND AGENCIES WHICH HAVE LINES OR CONDUITS IN THE PROPOSED WORK AREA. ALL LINES AND CONDUITS SHALL BE LOCATED AND IDENTIFIED FOR DEPTH BEFORE ANY EXCAVATION BEGINS. THE CONTRACTOR WILL CALL J.U.L.I.E. (1-800-892-0123) TO ACCOMPLISH THE ABOVE. IT IS THE CONTRACTOR'S RESPONSIBILITY TO IDENTIFY ALL UNDERGROUND NON-JULIE UTILITIES LOCATED WITHIN THE PROPOSED CONSTRUCTION LIMITS. THESE UNDERGROUND IMPROVEMENTS WILL BE LOCATED AT THE CONTRACTOR'S OWN EXPENSE PRIOR TO THE START OF CONSTRUCTION ACTIVITIES.

HEIGHT OF CONSTRUCTION EQUIPMENT

THE MAXIMUM ANTICIPATED HEIGHT OF THE CONSTRUCTION EQUIPMENT WILL BE 20 FEET. THE TALLEST EQUIPMENT IS EXPECTED TO BE A BACKHOE.

EQUIPMENT PARKING AND STORAGE AREA

THE CONTRACTOR WILL USE THE DESIGNATED EQUIPMENT PARKING AND STORAGE AREA AS SHOWN. THE CONTRACTOR WILL BE REQUIRED TO MAINTAIN THE PROPOSED EQUIPMENT PARKING AND STORAGE AREA THROUGHOUT THE COURSE OF THE PROJECT. ANY AREAS DAMAGED OUTSIDE OF THESE AREAS WILL BE REPAIRED BY THE CONTRACTOR AND AT THE CONTRACTOR'S OWN EXPENSE. AT THE CONCLUSION OF THE PROJECT THE CONTRACTOR WILL RESTORE THE EQUIPMENT PARKING AND STORAGE AREA TO ITS ORIGINAL STATE. RESTORATION OF THE EQUIPMENT PARKING AND STORAGE AREA WILL BE CONSIDERED INCIDENTAL TO THE PROJECT AND NO ADDITIONAL COMPENSATION WILL BE ALLOWED.

CONTRACTOR RESPONSIBILITIES

THE CONTRACTOR'S EQUIPMENT PARKING AND STORAGE AREA WILL BE LOCATED AS SHOWN. THE CONTRACTOR'S EMPLOYEES WILL PARK THEIR PERSONAL VEHICLES IN THIS AREA. ONLY CONTRACTOR VEHICLES NEEDED FOR CONSTRUCTION WILL BE ALLOWED OUTSIDE THE EQUIPMENT PARKING AREA. ALL MATERIAL STORAGE (PIPE, FITTINGS, ETC.) SHALL BE STORED IN THIS AREA AS WELL. ALL BACKFILL MATERIAL WILL REMAIN OFFSITE UNTIL NEEDED, UNLESS OTHERWISE AUTHORIZED AT THE TIME OF CONSTRUCTION BY THE AIRPORT DIRECTOR OR HIS AUTHORIZED REPRESENTATIVE.

THE CONTRACTOR AND HIS EMPLOYEES WILL BE RESTRICTED TO THE WORK AREA AND ALL OTHER AREAS OF THE AIRPORT ARE "OFF LIMITS" TO THEM.

THE CONTRACTOR SHALL MINIMIZE THE CLOSURE OF TAXILANES LEADING TO THE VARIOUS HANGARS ALONG THE PROPOSED WATER MAIN LOOP, AND SHALL PROVIDE THE AIRPORT DIRECTOR A PROPOSED WORK SCHEDULE DEFINITELY LISTING HIS ANTICIPATED CLOSURE DATES SO THAT THE AIRPORT CAN COMMUNICATE THE CLOSURES TO THEIR TENANTS. THIS SCHEDULE SHALL BE PROVIDED A MINIMUM OF TWO WEEKS PRIOR TO THE START OF WORK, AND SHALL BE UPDATED WEEKLY TO ACCOUNT FOR ANY ACCELERATION OR DELAYS THAT MAY OCCUR DURING CONSTRUCTION.

BARRICADES AND TRAFFIC CONES

IT WILL BE THE CONTRACTOR'S RESPONSIBILITY TO PLACE AND MAINTAIN BARRICADES AND TRAFFIC CONES SHOWN, AND AS DIRECTED BY THE AIRPORT DIRECTOR, OR HIS AUTHORIZED REPRESENTATIVE. THE BARRICADES WILL BE EQUIPPED WITH RED FLASHING OR RED STEADY-BURN LIGHTS AND 20" SQUARE ORANGE FLAGS. THE BARRICADES, THEIR MAINTENANCE, PLACEMENT AND REMOVAL WILL BE PAID FOR AS PART OF ITEM AR150530, TRAFFIC MAINTENANCE, PER L.S.

TRAFFIC MAINTENANCE OFF THE AIRPORT WILL BE PROVIDED IN ACCORDANCE WITH THE REQUIREMENTS SET FORTH BY THE CITY OF DECATUR. THIS ELEMENT OF TRAFFIC MAINTENANCE SHALL ALSO BE CONSIDERED INCIDENTAL TO ITEM AR150530 TRAFFIC MAINTENANCE, PER L.S.

150-ENGINEER'S FIELD OFFICE NOTES

NO FIELD OFFICE WILL BE PROVIDED FOR THIS PROJECT, HOWEVER A WIRELESS PHONE SHALL BE IN ACCORDANCE TO ITEM AR150510. THE CONTRACTOR WILL FURNISH THE WIRELESS PHONE TO THE RESIDENT ENGINEER FOR HIS EXCLUSIVE USE FOR THE DURATION OF THIS PROJECT. THE RESIDENT ENGINEER WILL USE THIS PHONE FOR PROJECT BUSINESS ONLY. THE CONTRACTOR WILL BE RESPONSIBLE FOR ALL CHARGES ASSOCIATED WITH THIS WIRELESS PHONE.

THE PROPOSED ENGINEER'S FIELD OFFICE (WIRELESS PHONE) WILL BE PAID FOR UNDER ITEM:

AR150510 ENGINEER'S FIELD OFFICE _____ 1 L.S.



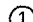

THE LOCATION, SIZE AND TYPE OF MATERIAL OF EXISTING UNDERGROUND UTILITIES INDICATED ON THE PLANS IS NOT REPRESENTED AS BEING ACCURATE, SUFFICIENT OR COMPLETE. IT SHALL BE THE CONTRACTOR'S RESPONSIBILITY TO DETERMINE THE ACTUAL LOCATION OF ALL SUCH FACILITIES, INCLUDING SERVICE CONNECTIONS TO UNDERGROUND UTILITIES. PRIOR TO CONSTRUCTION, THE CONTRACTOR SHALL NOTIFY THE UTILITY COMPANIES OF HIS OPERATIONAL PLANS AND SHALL OBTAIN FROM THE RESPECTIVE UTILITY COMPANIES DETAILED INFORMATION AND ASSISTANCE RELATIVE TO THE LOCATION OF THEIR FACILITIES AND THE WORKING SCHEDULE OF THE COMPANIES FOR REMOVAL OR ADJUSTMENT WHERE REQUIRED. IN THE EVENT AN UNEXPECTED UTILITY INTERFERENCE IS ENCOUNTERED DURING CONSTRUCTION, THE CONTRACTOR SHALL IMMEDIATELY NOTIFY THE UTILITY COMPANY OF JURISDICTION. THE ENGINEER SHALL ALSO BE IMMEDIATELY NOTIFIED. ANY SUCH MAINS AND SERVICES SHALL BE RESTORED TO SERVICE AT ONCE AND PAID FOR BY THE CONTRACTOR AT NO ADDITIONAL COST TO THE CONTRACT.

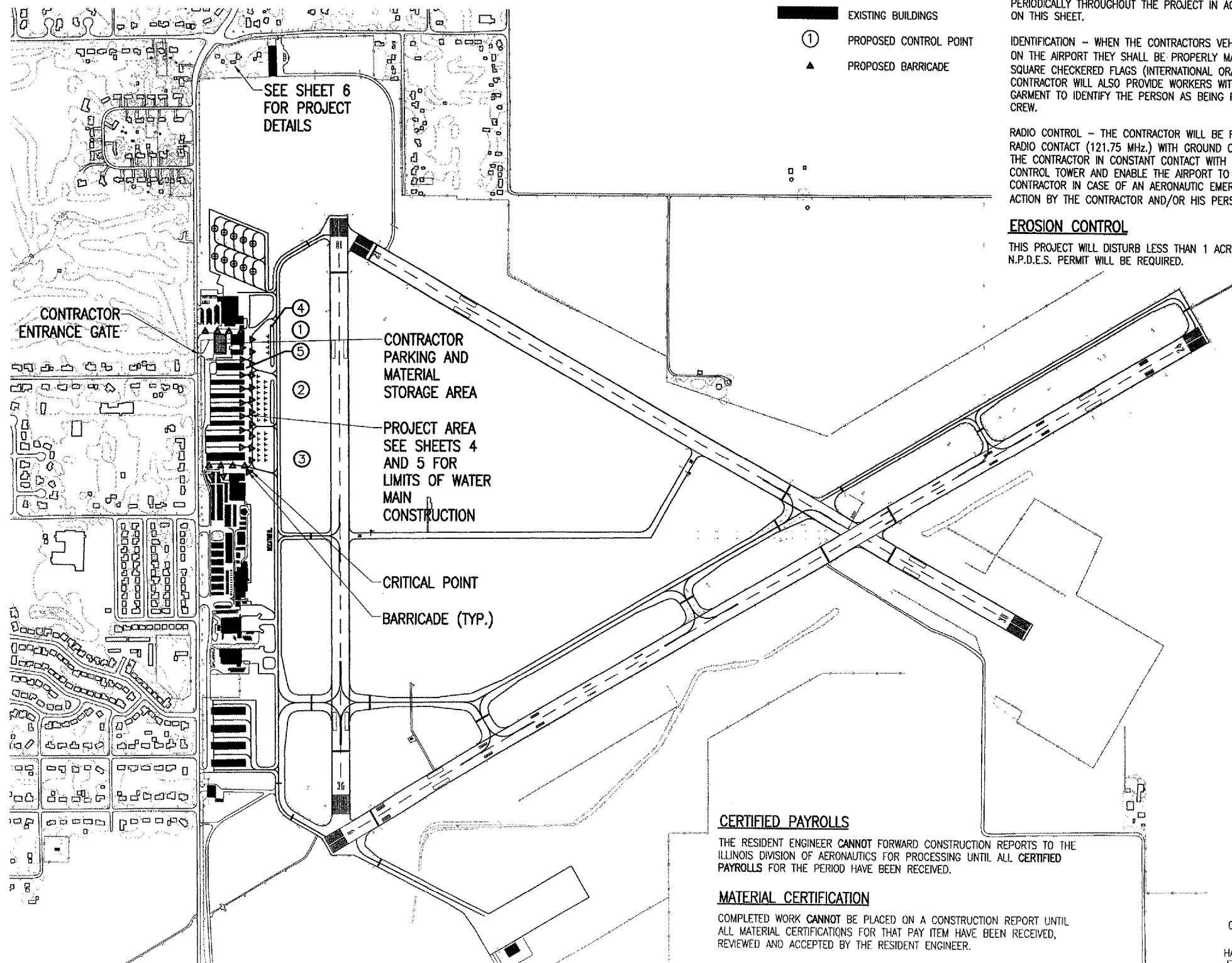
CALL J.U.L.I.E. FOR UTILITY INFORMATION AT 1-800-892-0123.

CONTROL POINT DATA

NO.	DESCRIPTION	NORTHING	EASTING	ELEVATION
1	IRON PIN	1,155,678.10	832,009.63	N/A
2	IRON PIN	1,155,181.53	832,015.69	N/A
3	IRON PIN	1,154,608.02	832,024.81	N/A
4	CHSLD BOX ON SOUTH SIDE, CONCRETE LID, DROP INLET			672.91
5	CHSLD "X" ON EAST RIM OF MANHOLE, EAST OF T-HANGAR "A"			675.18

LEGEND

-  EXISTING IMPROVEMENTS
-  EXISTING BUILDINGS
-  PROPOSED CONTROL POINT
-  PROPOSED BARRICADE



DE069

J.U.L.I.E. INFORMATION

COUNTY: MACON
CITY: DECATUR
TOWNSHIP: LONG CREEK
SECTION NO.: 20 & 21
ADDRESS: DECATUR AIRPORT AIRPORT ROAD DECATUR, ILLINOIS 62524

CRITICAL POINT DATA

LATITUDE: 39° 50' 08.29"
LONGITUDE: 88° 52' 36.80"
ELEVATION: 678' M.S.L.

PROPOSED SAFETY PLAN

GENERAL - THE DECATUR AIRPORT IS COMPRISED OF THREE RUNWAYS. THE PROPOSED CONSTRUCTION WILL NOT NECESSITATE CLOSING ANY RUNWAYS. ACCESS TAXILANES/TAXILANES WILL REQUIRE CLOSURE PERIODICALLY THROUGHOUT THE PROJECT IN ACCORDANCE WITH THE NOTES ON THIS SHEET.

IDENTIFICATION - WHEN THE CONTRACTORS VEHICLES AND EQUIPMENT ARE ON THE AIRPORT THEY SHALL BE PROPERLY MARKED WITH THREE (3') FOOT SQUARE CHECKERED FLAGS (INTERNATIONAL ORANGE AND WHITE). THE CONTRACTOR WILL ALSO PROVIDE WORKERS WITH SOME TYPE OF TAG OR GARMENT TO IDENTIFY THE PERSON AS BEING PART OF THE CONSTRUCTION CREW.

RADIO CONTROL - THE CONTRACTOR WILL BE REQUIRED TO BE IN TWO-WAY RADIO CONTACT (121.75 MHz.) WITH GROUND CONTROL. THIS WILL KEEP THE CONTRACTOR IN CONSTANT CONTACT WITH THE DECATUR AIRPORT CONTROL TOWER AND ENABLE THE AIRPORT TO IMMEDIATELY CONTACT THE CONTRACTOR IN CASE OF AN AERONAUTIC EMERGENCY THAT WOULD REQUIRE ACTION BY THE CONTRACTOR AND/OR HIS PERSONNEL.

EROSION CONTROL

THIS PROJECT WILL DISTURB LESS THAN 1 ACRE OF LAND, THEREFORE NO N.P.D.E.S. PERMIT WILL BE REQUIRED.

CERTIFIED PAYROLLS

THE RESIDENT ENGINEER CANNOT FORWARD CONSTRUCTION REPORTS TO THE ILLINOIS DIVISION OF AERONAUTICS FOR PROCESSING UNTIL ALL CERTIFIED PAYROLLS FOR THE PERIOD HAVE BEEN RECEIVED.

MATERIAL CERTIFICATION

COMPLETED WORK CANNOT BE PLACED ON A CONSTRUCTION REPORT UNTIL ALL MATERIAL CERTIFICATIONS FOR THAT PAY ITEM HAVE BEEN RECEIVED, REVIEWED AND ACCEPTED BY THE RESIDENT ENGINEER.

0' 250' 500' 1000'
HALF SIZE SCALE: 1" = 1000'
FULL SIZE SCALE: 1" = 500'

REVISION BY DATE

HANSON
Hanson Professional Services Inc.
1525 South Sixth Street
Springfield, Illinois 62703-2888
Offices Nationwide

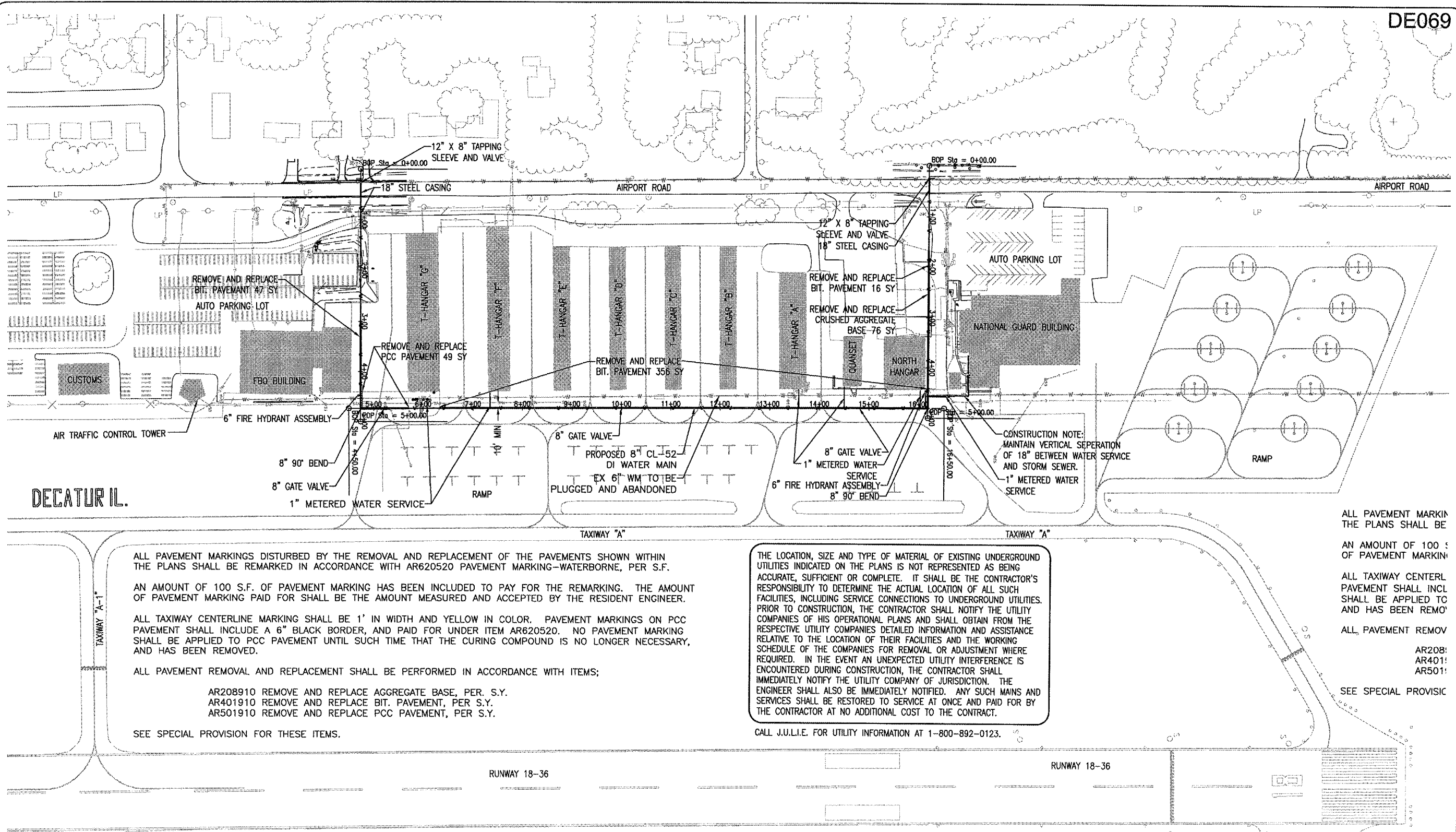
CONSTRUCT WATER MAIN
PROPOSED SAFETY PLAN

3
3 of 15 sheets

IL PROJ.: DEC-3801
A.I.P. PROJ.: 3-17-0033-XX

Project No.: 07A0060D_0800
Filename: R-0035FY.DWG
Scale: 1" = 500'
Date: 03/12/08

LAYOUT
DRAWN: JR/CAH
REVIEWED: JR/CAH
03/12/08
03/12/08
04/18/08



ALL PAVEMENT MARKINGS DISTURBED BY THE REMOVAL AND REPLACEMENT OF THE PAVEMENTS SHOWN WITHIN THE PLANS SHALL BE REMARKED IN ACCORDANCE WITH AR620520 PAVEMENT MARKING-WATERBORNE, PER S.F.

AN AMOUNT OF 100 S.F. OF PAVEMENT MARKING HAS BEEN INCLUDED TO PAY FOR THE REMARKING. THE AMOUNT OF PAVEMENT MARKING PAID FOR SHALL BE THE AMOUNT MEASURED AND ACCEPTED BY THE RESIDENT ENGINEER.

ALL TAXIWAY CENTERLINE MARKING SHALL BE 1' IN WIDTH AND YELLOW IN COLOR. PAVEMENT MARKINGS ON PCC PAVEMENT SHALL INCLUDE A 6" BLACK BORDER, AND PAID FOR UNDER ITEM AR620520. NO PAVEMENT MARKING SHALL BE APPLIED TO PCC PAVEMENT UNTIL SUCH TIME THAT THE CURING COMPOUND IS NO LONGER NECESSARY, AND HAS BEEN REMOVED.

ALL PAVEMENT REMOVAL AND REPLACEMENT SHALL BE PERFORMED IN ACCORDANCE WITH ITEMS;

AR208910 REMOVE AND REPLACE AGGREGATE BASE, PER S.Y.
 AR401910 REMOVE AND REPLACE BIT. PAVEMENT, PER S.Y.
 AR501910 REMOVE AND REPLACE PCC PAVEMENT, PER S.Y.

SEE SPECIAL PROVISION FOR THESE ITEMS.

THE LOCATION, SIZE AND TYPE OF MATERIAL OF EXISTING UNDERGROUND UTILITIES INDICATED ON THE PLANS IS NOT REPRESENTED AS BEING ACCURATE, SUFFICIENT OR COMPLETE. IT SHALL BE THE CONTRACTOR'S RESPONSIBILITY TO DETERMINE THE ACTUAL LOCATION OF ALL SUCH FACILITIES, INCLUDING SERVICE CONNECTIONS TO UNDERGROUND UTILITIES. PRIOR TO CONSTRUCTION, THE CONTRACTOR SHALL NOTIFY THE UTILITY COMPANIES OF HIS OPERATIONAL PLANS AND SHALL OBTAIN FROM THE RESPECTIVE UTILITY COMPANIES DETAILED INFORMATION AND ASSISTANCE RELATIVE TO THE LOCATION OF THEIR FACILITIES AND THE WORKING SCHEDULE OF THE COMPANIES FOR REMOVAL OR ADJUSTMENT WHERE REQUIRED. IN THE EVENT AN UNEXPECTED UTILITY INTERFERENCE IS ENCOUNTERED DURING CONSTRUCTION, THE CONTRACTOR SHALL IMMEDIATELY NOTIFY THE UTILITY COMPANY OF JURISDICTION. THE ENGINEER SHALL ALSO BE IMMEDIATELY NOTIFIED. ANY SUCH MAINS AND SERVICES SHALL BE RESTORED TO SERVICE AT ONCE AND PAID FOR BY THE CONTRACTOR AT NO ADDITIONAL COST TO THE CONTRACT.

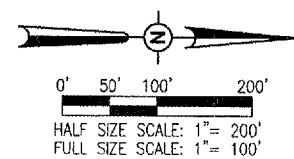
CALL J.U.L.I.E. FOR UTILITY INFORMATION AT 1-800-892-0123.

ALL PAVEMENT MARKING THE PLANS SHALL BE AN AMOUNT OF 100 S.F. OF PAVEMENT MARKING. ALL TAXIWAY CENTERLINE PAVEMENT SHALL INCL. SHALL BE APPLIED TO AND HAS BEEN REMOVED. ALL PAVEMENT REMOVAL SHALL BE PERFORMED IN ACCORDANCE WITH ITEMS; AR208; AR401; AR501; SEE SPECIAL PROVISIC

COORDINATE DATA - 8-INCH WATER MAIN BASELINE

ALIGNMENT	STATION	OFFSET	NORTHING	EASTING
SOUTH	0+00	0	1,154,500.23	831,104.61
SOUTH	5+00	0	1,154,500.23	831,604.61
NORTH SOUTH	4+50	0	1,154,476.48	831,578.45
NORTH SOUTH	16+50	0	1,155,676.48	831,573.67
NORTH	0+00	0	1,155,643.97	831,093.19
NORTH	5+00	0	1,155,643.97	831,593.19

- LEGEND**
- X — EXISTING FENCE
 - W — PROPOSED WATERLINE
 - W — EXISTING WATERLINE
 - S — EXISTING SANITARY
 - T — EXISTING TELEPHONE
 - G — EXISTING GAS LINE
 - S — EXISTING STORM SEWER



DATE	REVISION	BY

DECATUR AIRPORT
DECATUR, ILLINOIS
 IL PROJ.: DEC-3601
 A.I.P. PROJ.: 3-17-0033-YX

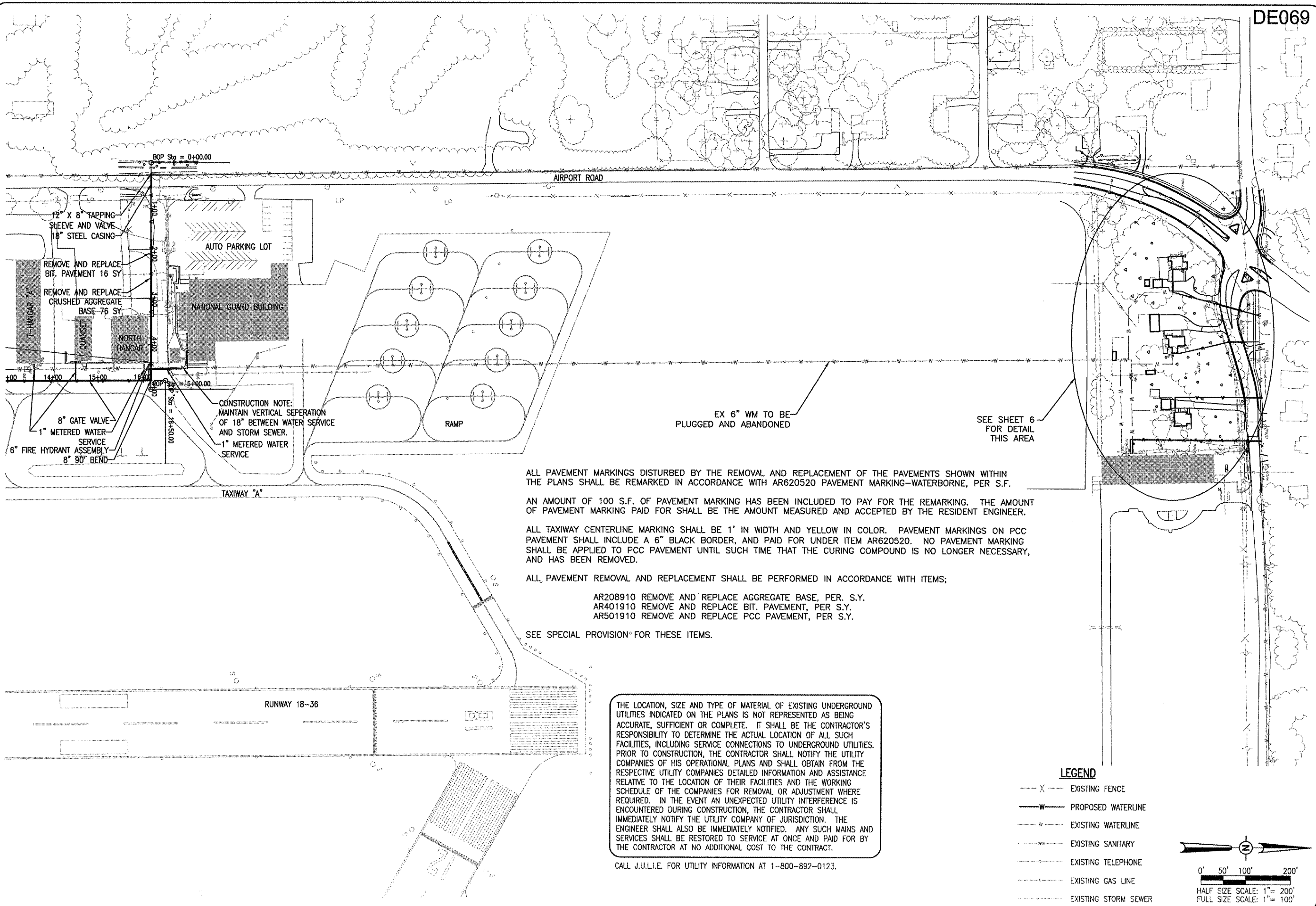
LAYOUT	RAW	GRF	JMR
	03/12/08	04/16/08	04/16/08

HE Project No. 07A0060D_0800
 Filename: R-121CON.DWG
 Scale: 1" = 100'
 Date: 04/18/08

HANSON
 Hanson Professional Services Inc.
 1525 South Sixth Street
 Springfield, Illinois 62703-2886
 Offices Nationwide

CONSTRUCT WATER MAIN
 PROPOSED CONSTRUCTION PLAN - GA RAMP AREA

4
 4 of 15 sheets



ALL PAVEMENT MARKINGS DISTURBED BY THE REMOVAL AND REPLACEMENT OF THE PAVEMENTS SHOWN WITHIN THE PLANS SHALL BE REMARKED IN ACCORDANCE WITH AR620520 PAVEMENT MARKING-WATERBORNE, PER S.F.

AN AMOUNT OF 100 S.F. OF PAVEMENT MARKING HAS BEEN INCLUDED TO PAY FOR THE REMARKING. THE AMOUNT OF PAVEMENT MARKING PAID FOR SHALL BE THE AMOUNT MEASURED AND ACCEPTED BY THE RESIDENT ENGINEER.

ALL TAXIWAY CENTERLINE MARKING SHALL BE 1' IN WIDTH AND YELLOW IN COLOR. PAVEMENT MARKINGS ON PCC PAVEMENT SHALL INCLUDE A 6" BLACK BORDER, AND PAID FOR UNDER ITEM AR620520. NO PAVEMENT MARKING SHALL BE APPLIED TO PCC PAVEMENT UNTIL SUCH TIME THAT THE CURING COMPOUND IS NO LONGER NECESSARY, AND HAS BEEN REMOVED.

ALL PAVEMENT REMOVAL AND REPLACEMENT SHALL BE PERFORMED IN ACCORDANCE WITH ITEMS:

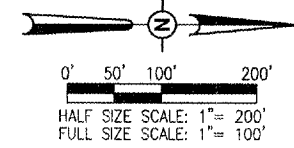
AR208910 REMOVE AND REPLACE AGGREGATE BASE, PER. S.Y.
 AR401910 REMOVE AND REPLACE BIT. PAVEMENT, PER S.Y.
 AR501910 REMOVE AND REPLACE PCC PAVEMENT, PER S.Y.

SEE SPECIAL PROVISION FOR THESE ITEMS.

THE LOCATION, SIZE AND TYPE OF MATERIAL OF EXISTING UNDERGROUND UTILITIES INDICATED ON THE PLANS IS NOT REPRESENTED AS BEING ACCURATE, SUFFICIENT OR COMPLETE. IT SHALL BE THE CONTRACTOR'S RESPONSIBILITY TO DETERMINE THE ACTUAL LOCATION OF ALL SUCH FACILITIES, INCLUDING SERVICE CONNECTIONS TO UNDERGROUND UTILITIES. PRIOR TO CONSTRUCTION, THE CONTRACTOR SHALL NOTIFY THE UTILITY COMPANIES OF HIS OPERATIONAL PLANS AND SHALL OBTAIN FROM THE RESPECTIVE UTILITY COMPANIES DETAILED INFORMATION AND ASSISTANCE RELATIVE TO THE LOCATION OF THEIR FACILITIES AND THE WORKING SCHEDULE OF THE COMPANIES FOR REMOVAL OR ADJUSTMENT WHERE REQUIRED. IN THE EVENT AN UNEXPECTED UTILITY INTERFERENCE IS ENCOUNTERED DURING CONSTRUCTION, THE CONTRACTOR SHALL IMMEDIATELY NOTIFY THE UTILITY COMPANY OF JURISDICTION. THE ENGINEER SHALL ALSO BE IMMEDIATELY NOTIFIED. ANY SUCH MAINS AND SERVICES SHALL BE RESTORED TO SERVICE AT ONCE AND PAID FOR BY THE CONTRACTOR AT NO ADDITIONAL COST TO THE CONTRACT.

CALL J.U.L.I.E. FOR UTILITY INFORMATION AT 1-800-892-0123.

- LEGEND**
- X — EXISTING FENCE
 - W — PROPOSED WATERLINE
 - W — EXISTING WATERLINE
 - S — EXISTING SANITARY
 - T — EXISTING TELEPHONE
 - G — EXISTING GAS LINE
 - SS — EXISTING STORM SEWER



DATE	REVISION	BY

DECATUR AIRPORT
DECATUR, ILLINOIS

IL. PROJ.: DEC-3801 A.I.P. PROJ.: 3-17-0033-XX

HEB Project No. 07A00600_0800	RAW	03/12/08
Filename: R-121CON.DWG	GRF	04/16/08
Scale: 1" = 100'	JMR	04/16/08
Date: 04/18/08		

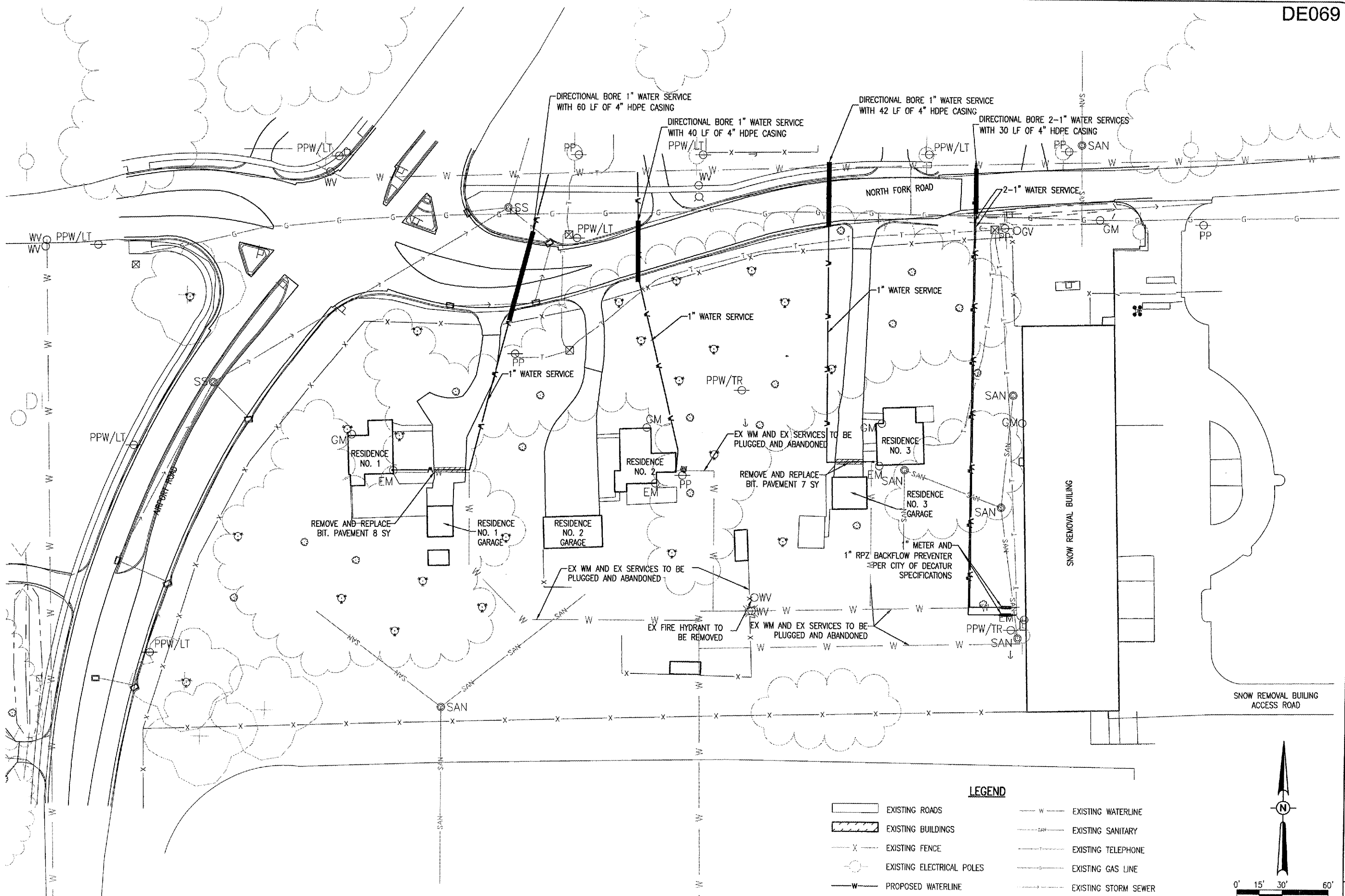
HANSON

Hanson Professional Services Inc.
 1525 South Sixth Street
 Springfield, Illinois 62703-2886
 Offices Nationwide

CONSTRUCT WATER MAIN

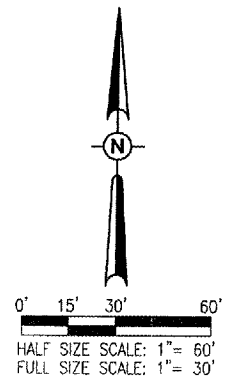
PROPOSED CONSTRUCTION PLAN - GA RAMP AREA

APR 18, 2008 1:29 PM WALLE00723
I:\AIRPORTS\DECATUR\07AUG08\CAD\SHEETS\122CON.DWG - CONSTRUCTION 3



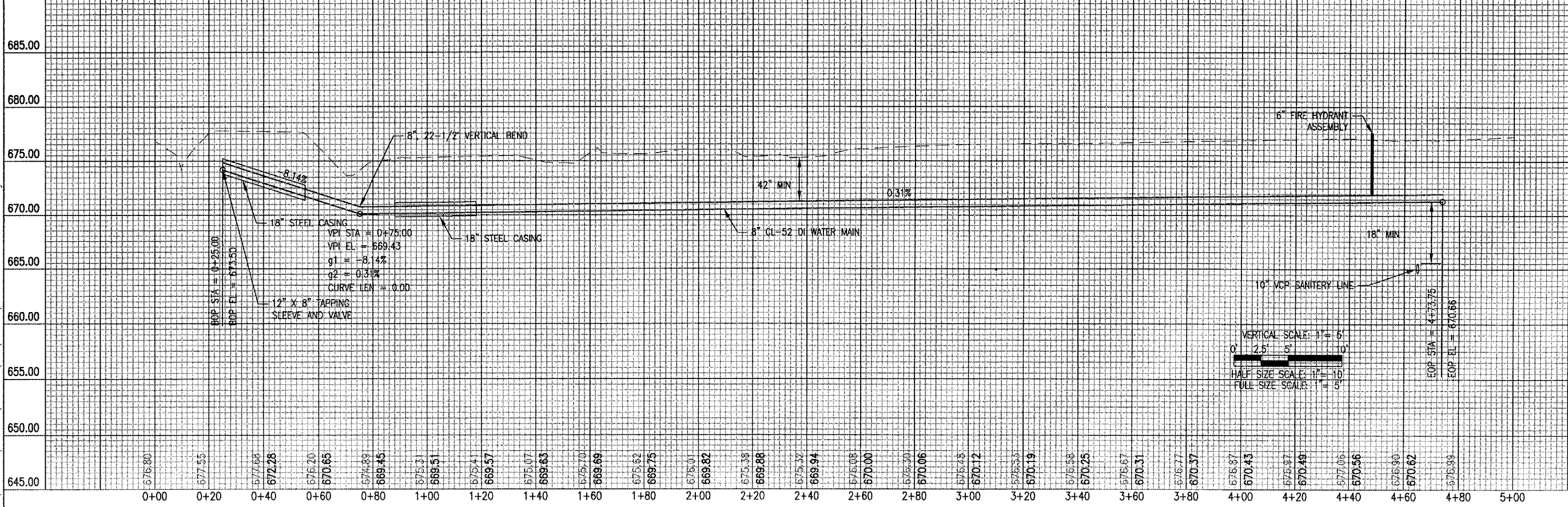
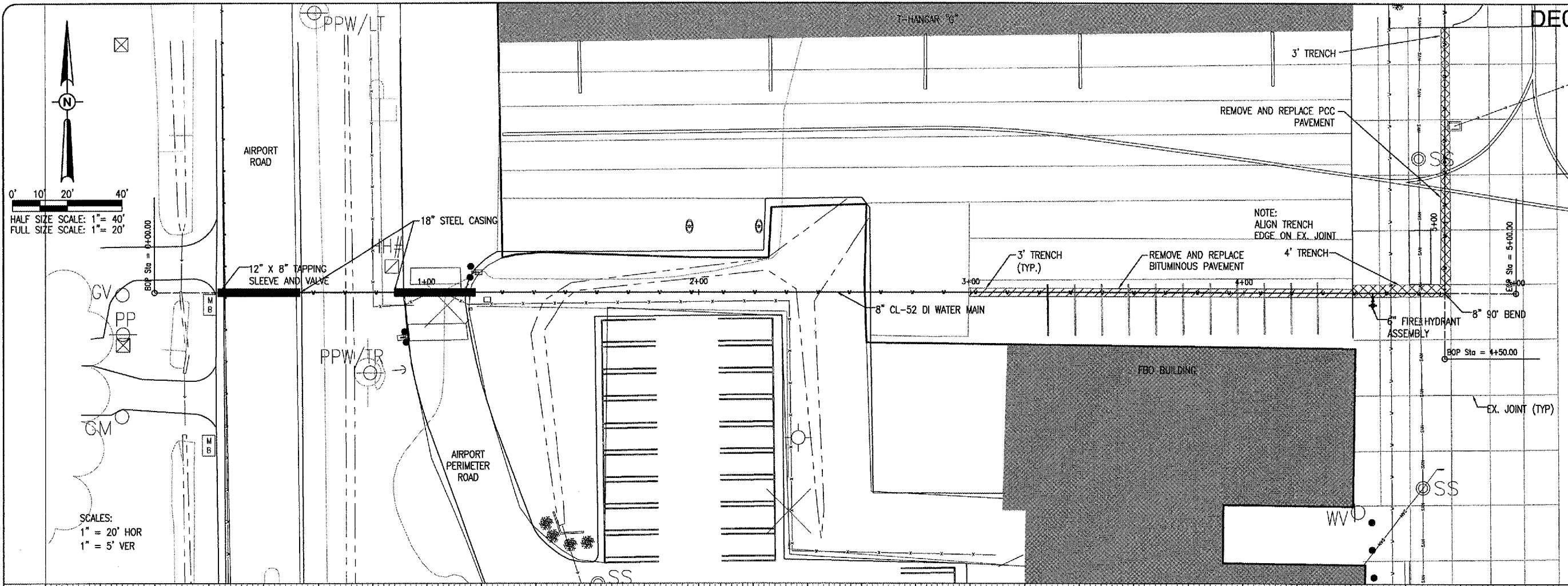
LEGEND

EXISTING ROADS	EXISTING WATERLINE
EXISTING BUILDINGS	EXISTING SANITARY
EXISTING FENCE	EXISTING TELEPHONE
EXISTING ELECTRICAL POLES	EXISTING GAS LINE
PROPOSED WATERLINE	EXISTING STORM SEWER



<p>DECATUR, ILLINOIS</p>	<p>BY</p>									
	<p>REVISION</p>									
<p>DATE</p>	<p>DATE</p>									
<p>IL. PROJ.: DEC-3801</p>	<p>A.I.P. PROJ.: 3-17-0033-XX</p>									
<p>FILE: 07AUG08.DWG</p> <p>FILENAME: R-122CON.DWG</p> <p>SCALE: 1" = 30'</p> <p>DATE: 04/18/08</p>	<table border="1"> <tr> <td>LAYOUT</td> <td>RAW</td> <td>03/14/08</td> </tr> <tr> <td>DRAWN</td> <td>GRF</td> <td>04/15/08</td> </tr> <tr> <td>REVIEWED</td> <td>JMR</td> <td>04/16/08</td> </tr> </table>	LAYOUT	RAW	03/14/08	DRAWN	GRF	04/15/08	REVIEWED	JMR	04/16/08
LAYOUT	RAW	03/14/08								
DRAWN	GRF	04/15/08								
REVIEWED	JMR	04/16/08								
<p>HANSON Professional Services, Inc. 1525 South Sixth Street Springfield, Illinois 62705-2886 Offices Nationwide</p>	<p>CONSTRUCT WATER MAIN</p> <p>PROPOSED CONSTRUCTION PLAN - NORTH WEST QUADRANT AREA</p>									
<p>6</p> <p>6 of 16 sheets</p>										

APR 18, 2008 1:31 PM WALLE00723
 I:\AIRPORTS\DECATUR\07A0060\CAD\SHEETS\R-70\FNP.DWG - South Leg



DE069

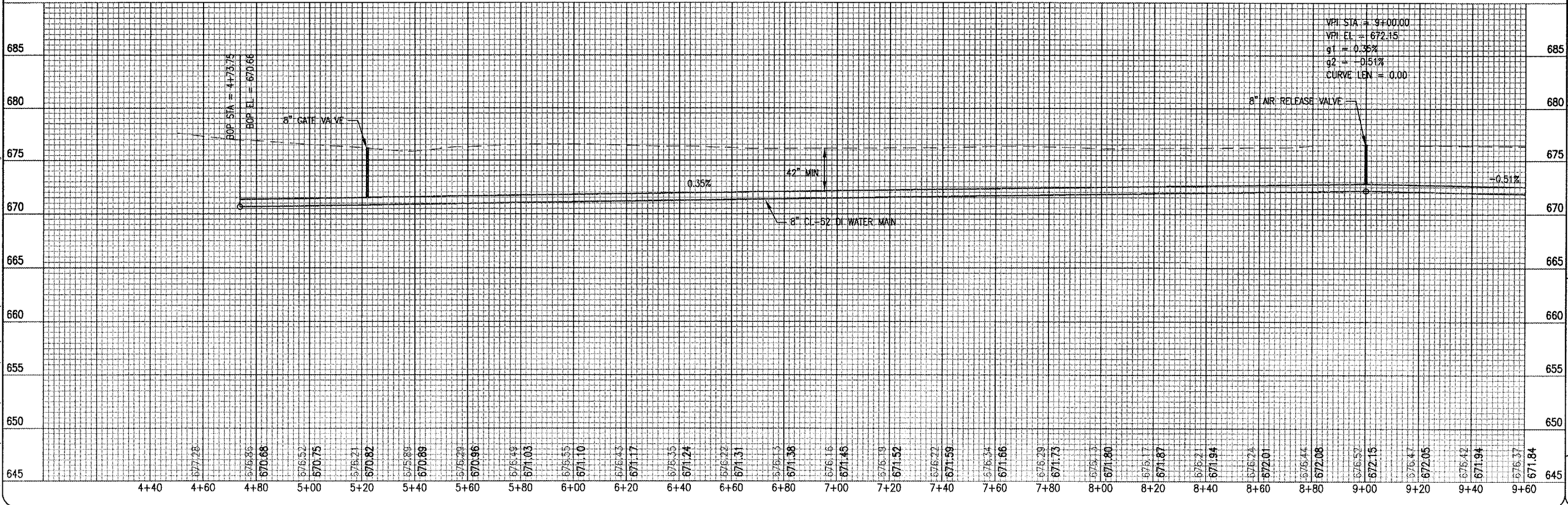
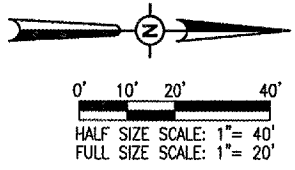
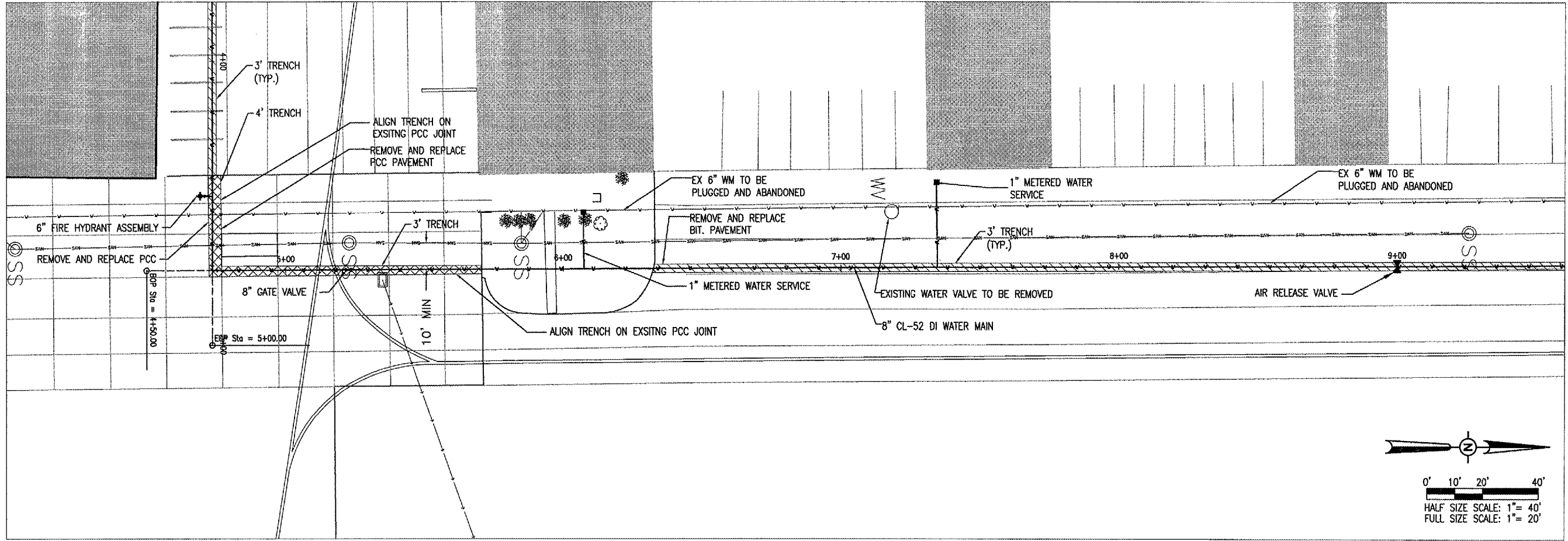
DATE	REVISION	BY

DECATUR AIRPORT
 DECATUR, ILLINOIS
 A.I.P. PROJ. 3-17-0033-XX
 I.L. PROJ. DEC-3801

REVISION	DATE	BY
LAYOUT	03/14/08	RAW
DRAWN	04/16/08	GRF
REVIEWED	04/16/08	JMR

HANSON
 Hanson Professional Services Inc.
 1025 South Shore Street
 Springfield, IL 62766
 Offices Nationwide

CONSTRUCT
 WATER MAIN
 SOUTH LEG
 PLAN AND PROFILE
 STA. 0+00 TO STA. 5+00



APR 18, 2008 1:31 PM WALLE00723
I:\AIRPORTS\DECATUR\07A0060\CAD\SHEETS\R-702PNP.DWG - North South Leg - 1

DATE	REVISION	BY

DECATUR AIRPORT
DECATUR, ILLINOIS

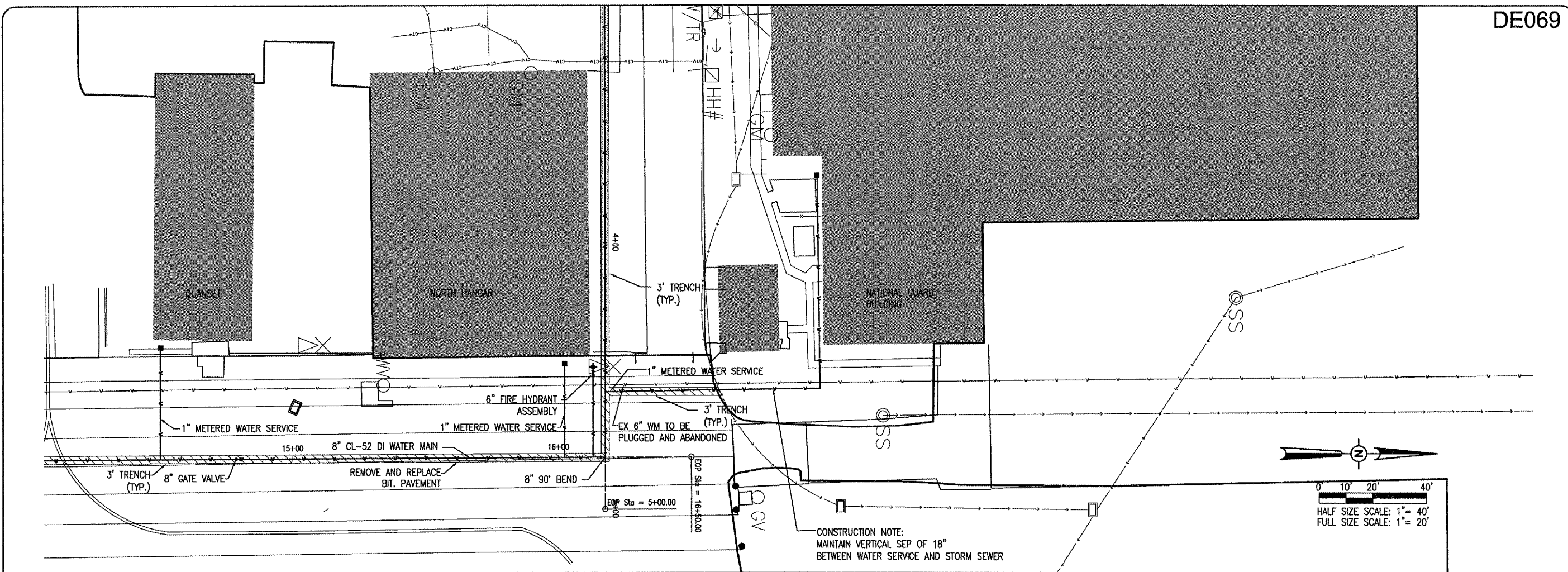
IL PROJ.: DEC-3801 A.I.P. PROJ.: 3-17-0033-XX

REVISION	DATE	BY	APP'D
LAYOUT	03/14/08	RAW	
DRAWN	04/16/08	GRF	
REVIEWED	04/16/08	JMR	

HANSON
Hanson Professional Services Inc.
1525 South State Street
Springfield, Illinois 62703-2886
Offices Nationwide

CONSTRUCT
WATER MAIN
NORTH SOUTH LEG
PLAN AND PROFILE
STA. 5+00 TO STA. 9+60

APR 18, 2008 1:45 PM WALLE00723
 I:\AIRPORTS\DECATUR\07A0060\GAD\SHEETS\R-704RNP.DWG - North South Leg - 3

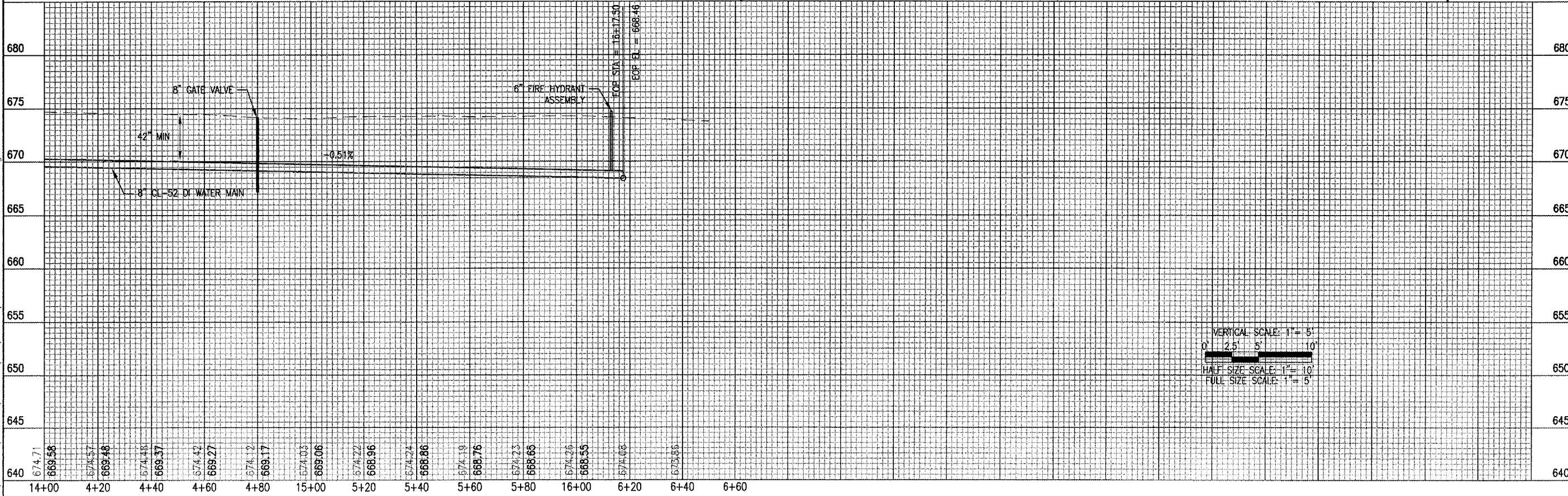


DE069

DATE	REVISION	BY

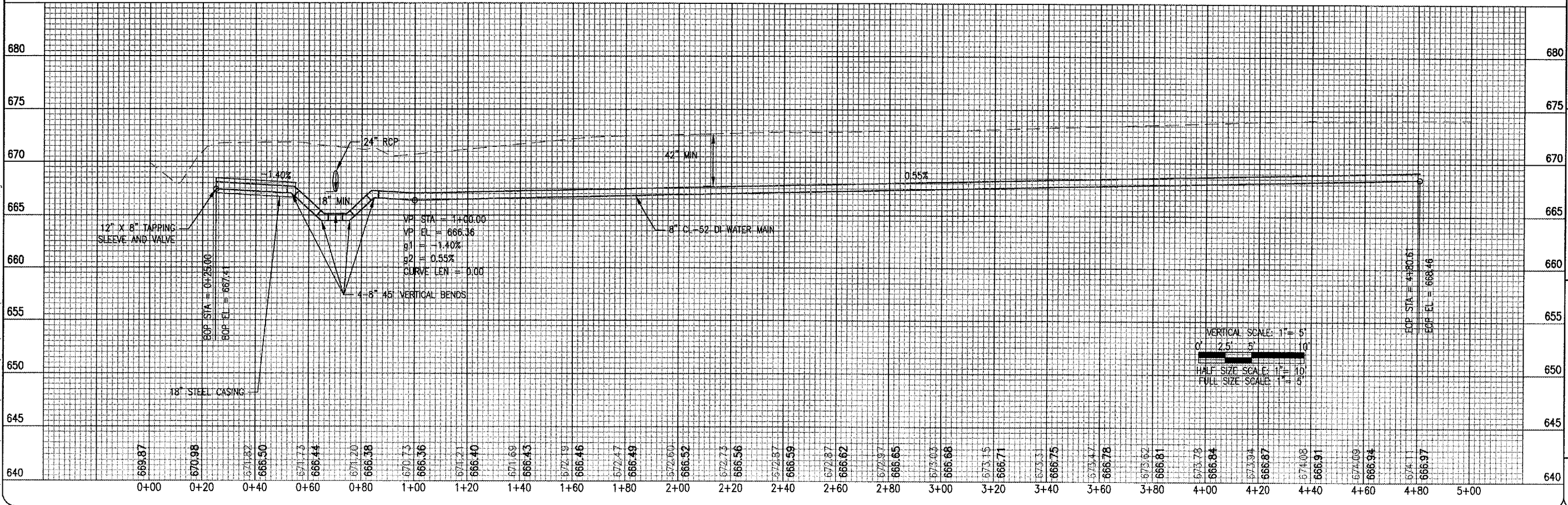
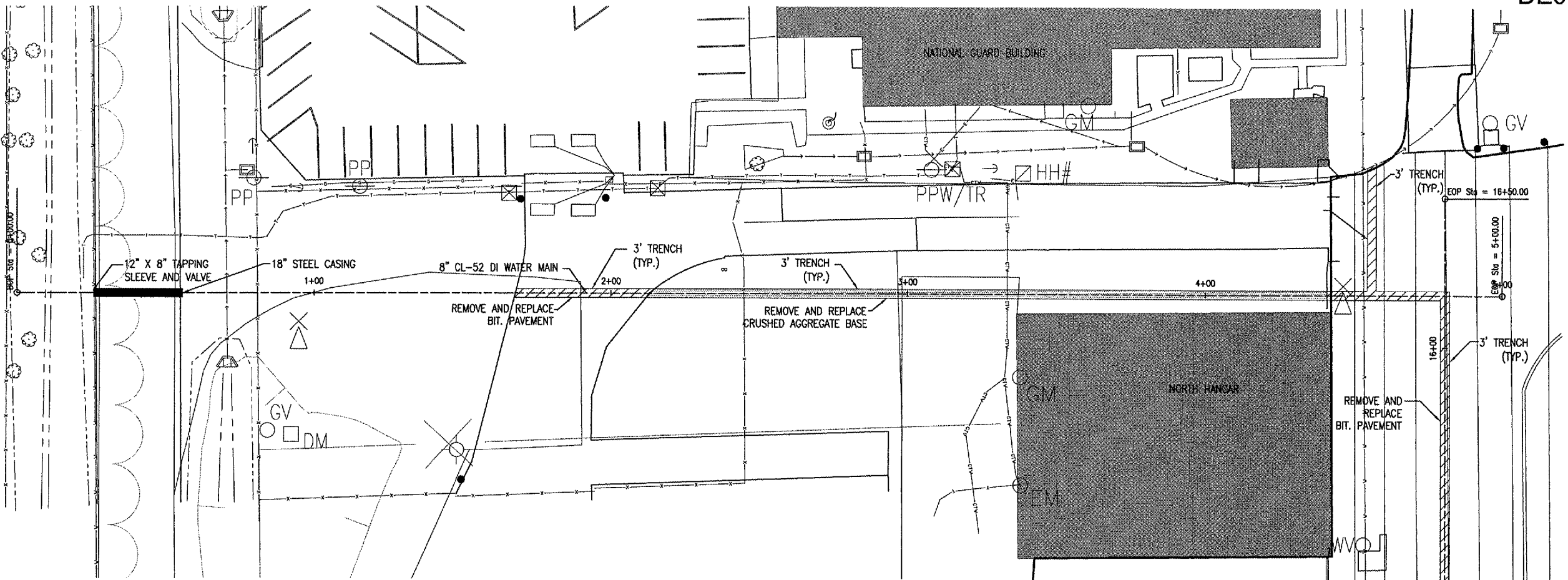
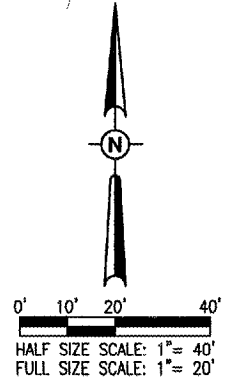
DECATUR AIRPORT
DECATUR, ILLINOIS
 ILL. PROJ.: DEC-3801
 A.I.P. PROJ.: 3-17-0033-XX

IEE Project No. 07A0060D_0800	RAW	03/14/08
File Name R-704RNP.DWG	GRF	04/16/08
Scale 1" = 20'	JMR	04/16/08
Date 04/17/08		



HANSON
 Hanson Professional Services Inc.
 1535 S. Springfield Avenue
 Springfield, Illinois 62703-2886
 Offices Nationwide


CONSTRUCT WATER MAIN
 NORTH SOUTH LEG
 PLAN AND PROFILE
 STA. 14+00 to STA. 16+60



DATE	REVISION	BY

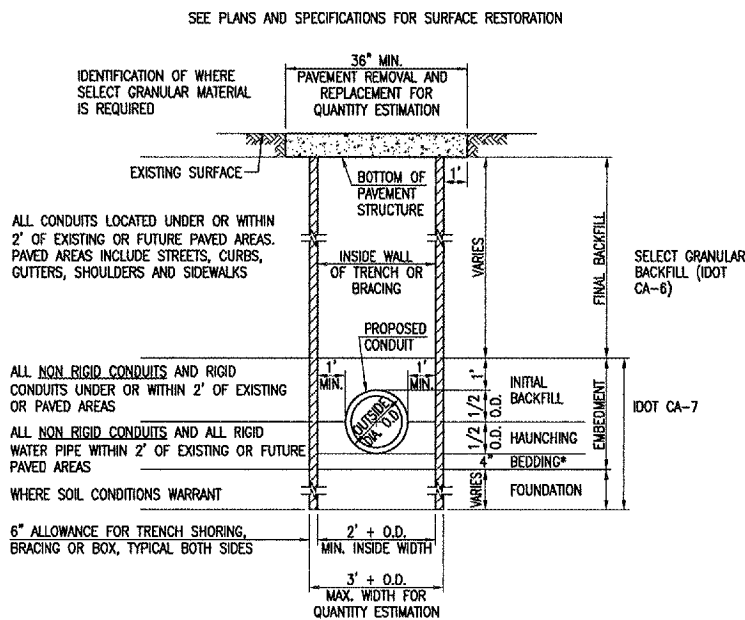

DECATUR, ILLINOIS
 I.L. PROJ.: DEC-3801 A.I.P. PROJ.: J-17-0033-XX

ILL. Project No. 07A0060D_0800 Filename: R-705PWP.DWG Scale: 1" = 20' Date: 04/17/08	LAYOUT DRAWN REVIEWED	RAW GRF JMR	03/14/08 04/16/08 04/16/08
-----------------------------------------------------------------------------------------------	-----------------------------	-------------------	----------------------------------


HANSON
 Hanson Professional Services Inc.
 1925 South Sixth Street
 Springfield, IL 62766
 Offices Nationwide

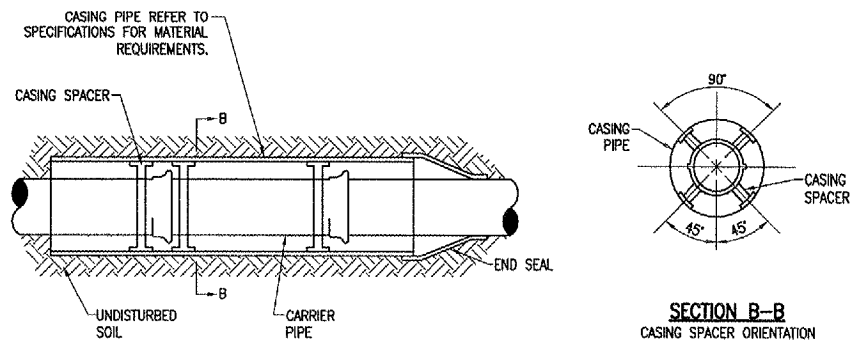
CONSTRUCT
 WATER MAIN
 NORTH LEG
 PLAN AND PROFILE
 STA. 0+00 to STA. 5+00

APR 18, 2008 2:34 PM WALLE00723
 I:\AIRPORTS\DECATUR\07A0060\CAD\SHEETS\R-705PWP.DWG - North Leg



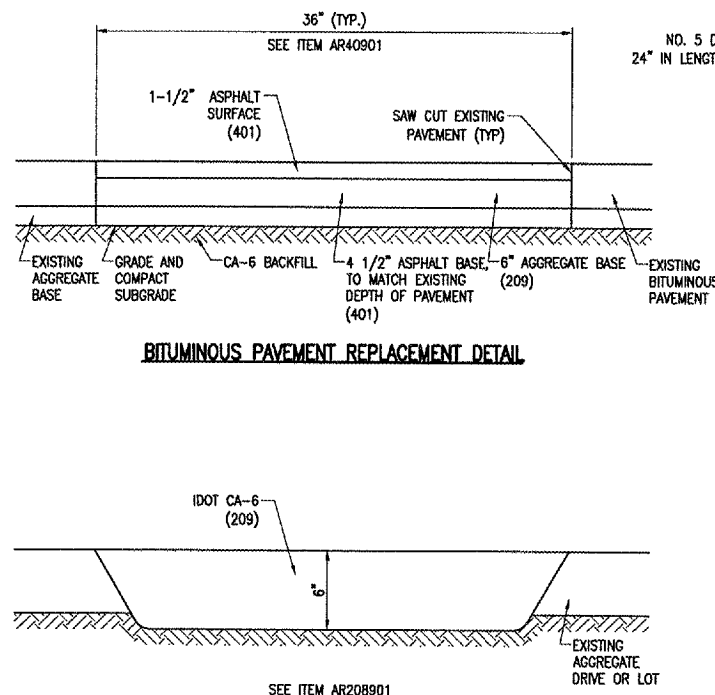
*BEDDING REQUIRED FOR PVC PIPE AND FOR DUCTILE IRON PIPE WITH RESTRAINED JOINTS.
 NON RIGID CONDUITS ARE DEFINED AS FLEXIBLE THERMOPLASTIC PIPE AND/OR CORRUGATED METAL PIPE.
 NOTE: TRENCH BOX SHALL NOT EXTEND BELOW TOP OF PIPE, HOWEVER, IT SHALL NOT EXCEED 2 FEET FROM THE BOTTOM OF THE TRENCH.

TRENCH DETAIL UNDER PAVEMENT



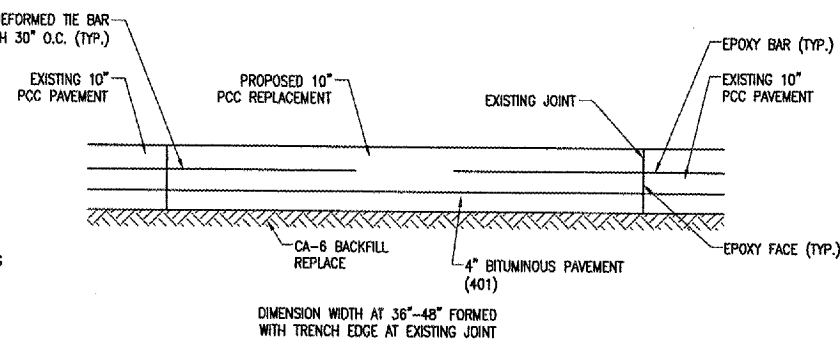
CASED PIPE

- NOTES:
1. CASING PIPE SIZE SHOWN IN PLANS ACCOMMODATES PUSH-ON JOINT. LARGER DIAMETER MAY BE REQUIRED FOR MECHANICAL JOINTS. THE INSIDE DIAMETER OF THE CASING PIPE SHALL BE A MINIMUM OF 4" LARGER THAN THE LARGEST OUTSIDE DIAMETER OF THE CARRIER PIPE (JOINTS OR COUPLINGS).
 2. ESTIMATED CASING LENGTH IS SHOWN ON PLANS. CASING LENGTH MAY BE ADJUSTED WITH APPROVAL OF ENGINEER.
 3. THE TOP OF THE CASING PIPE SHALL BE A MINIMUM OF 3.5' BELOW THE TOP OF PAVEMENT.
 4. USE CASING SPACERS (SEE DETAIL) TO MOVE CARRIER PIPE INTO CASING PIPE. SPACING OF CASING SPACERS WILL BE DICTATED BY THE MANUFACTURER.
 5. MINIMUM OF 2 SPACERS PER JOINT OF PIPE.

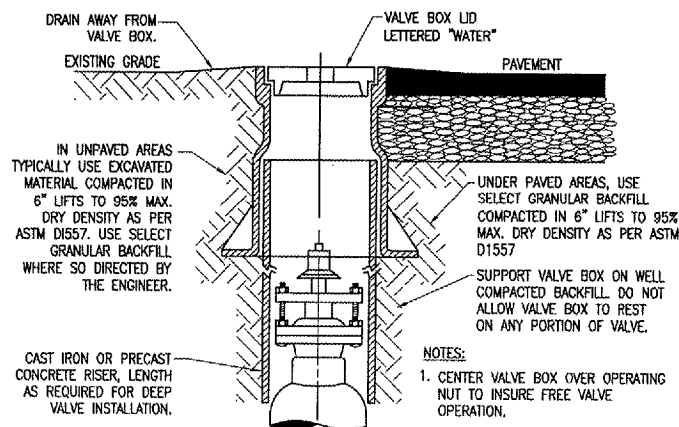


BITUMINOUS PAVEMENT REPLACEMENT DETAIL

AGGREGATE SURFACE DETAIL

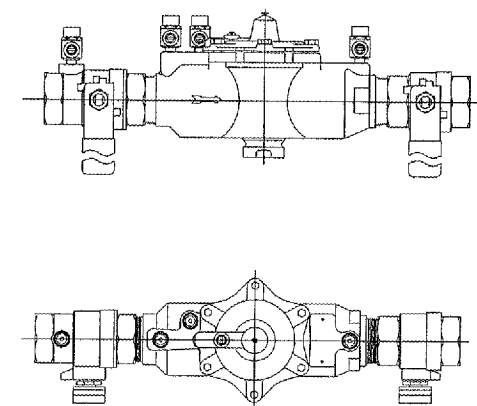


PCC PAVEMENT REPLACEMENT DETAIL



VALVE BOX DETAIL


- NOTES:
1. CENTER VALVE BOX OVER OPERATING NUT TO INSURE FREE VALVE OPERATION.
 2. FOR PRECAST CONCRETE VALVE BOXES USE 6" RISER PIPE ON 4" & 6" VALVES. USE 8" RISER PIPE ON 8" VALVES AND LARGER.



RPZ BACKFLOW PREVENTER

NOTE: RPZ BACKFLOW PREVENTION DEVICE AND METER PER CITY OF DECATUR SPECIFICATIONS

DATE	REVISION	BY

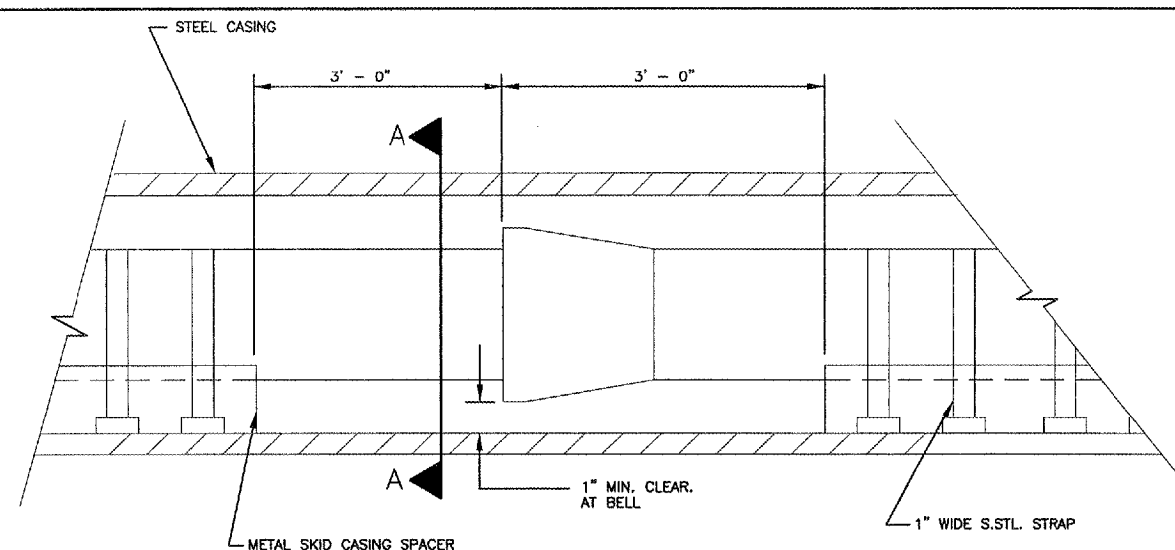

DECATUR, ILLINOIS
 ILL. PROJ.: DEC-3801 A.I.P. PROJ.: 3-17-0033-XX

ILL. Project No. 07A0080D_0800 Drawings: R-522CON.DWG Scale: 1" = 100' Date: 04/16/08	LAYOUT DRAWN: BAK REVISED: JMR DATE: 03/12/08 DATE: 04/16/08 DATE: 4/16/08
------------------------------------------------------------------------------------------------	-------------------------------------------------------------------------------------------

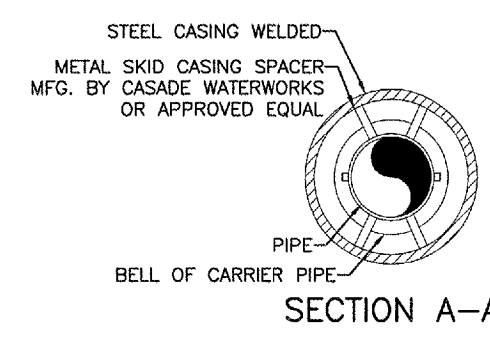

HANSON
 Hanson Professional Services, Inc.
 1525 South Sixth Street
 Springfield, Illinois 62703-2886
 Offices Nationwide

CONSTRUCT WATER MAIN
PROPOSED WATER MAIN
 DETAIL SHEET 2

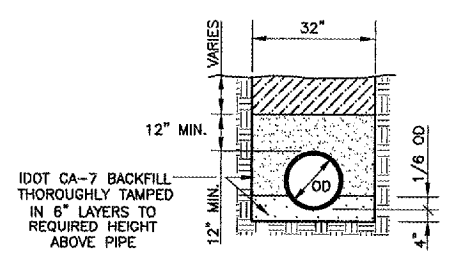
APR 18, 2008 1:29 PM WALLE00723
 I:\PROJECTS\DECATUR\07A0080D\CAD\SHETS\R-522CON.DWG - DETAILS 2



ENLARGED PLAN



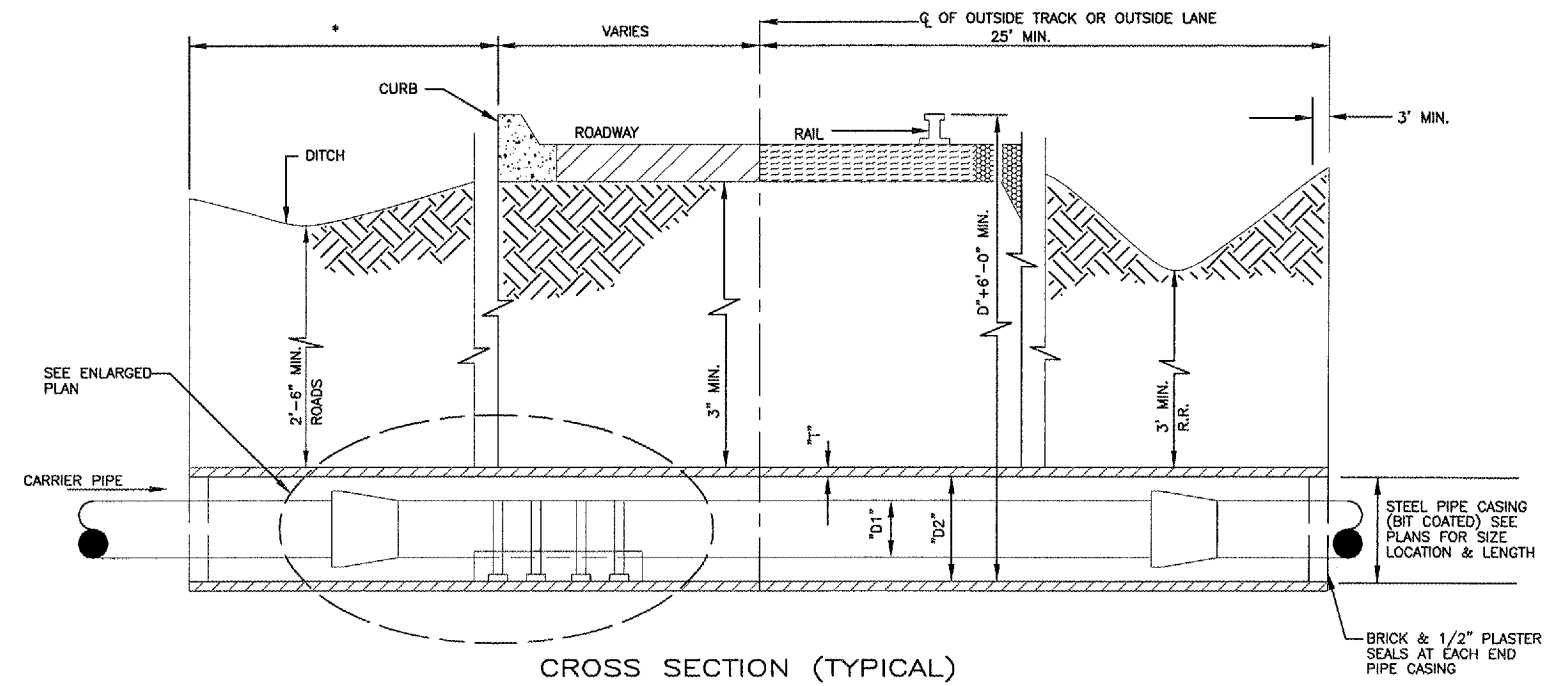
SECTION A-A



GRANULAR BEDDING

NOTES:
 SEE AR701830, BOTH CA-7 TRENCH BACKFILL FOR COMPLETE SPECIFICATION
 IF ANY UNSUITABLE SUBGRADE CONDITIONS ARE ENCOUNTERED, THE TRENCH SHOULD BE OVER EXCAVATED A MINIMUM OF 6" & REFILLED WITH GRANULAR MATERIAL.
 OD = OUTSIDE DIAMETER
 METALLIC ID TAPE SHALL BE PLACED 18" ABOVE PIPE
 PROVIDE SHEETING AND SHORING AS NECESSARY FOR SAFETY.
 BACKFILL MATERIALS SHALL BE APPROVED BY THE ENGINEER WHERE THE PIPE IS UNDERCUT.
 WATERMANS TO BE INSTALLED W/A MIN. OF 42" COVER.

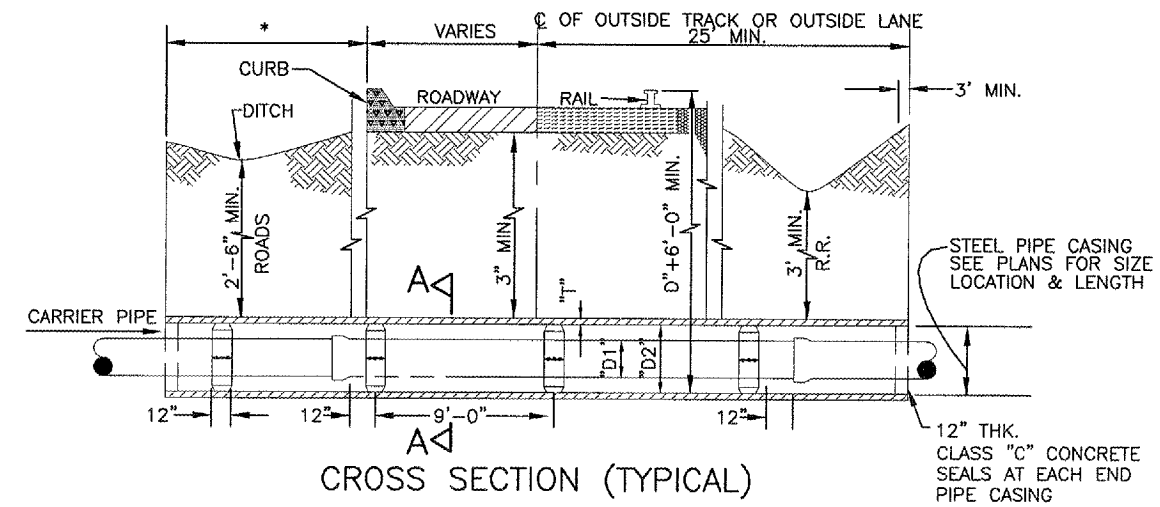
TYPICAL TRENCH SECTION DETAIL IN TURF AREAS



CROSS SECTION (TYPICAL)

CARRIER & CASING PIPE SIZE (MINIMUM)								
Cl. (DI) - M.J.			4"	6"	8"	10"	12"	
Cl. (DI) - P.O.	4"	6"	6"	8"	10"	12"		
PVC (DI)	4"	6"	8"	8"	10"	12"		
STEEL CASING PIPE (D2)	10"	12"	14"	16"	18"	20"	22"	24"
WALL THICKNESS (T)	1/4"	1/4"	1/4"	5/16"	5/16"	5/16"	3/8"	3/8"

JACK & BORE DETAILS



CROSS SECTION (TYPICAL)
 JACK AND BORE DETAILS

- NOTE:
- METAL SKIDS TO POSITION CARRIER PIPE IN THE CENTER POSITION OF CASING.
 2 METAL SKIDS REQUIRED FOR DUCTILE IRON PIPE. LOCATED ADJACENT TO THE BELL END AND AT THE MID POINT OF EACH LENGTH OF CARRIER PIPE FOR SUPPORT.
 3 METAL SKIDS REQUIRED FOR P.V.C. PIPE. LOCATED ADJACENT TO THE MID POINT AND TAIL END OF EACH LENGTH OF CARRIER PIPE FOR SUPPORT.
 - METAL SKID SHELL TO BE STAINLESS STEEL WITH P.V.C. LINER AND 18-8 STAINLESS STEEL NUTS AND BOLTS
 - ROTATION OF CARRIER PIPE INSIDE THE CASING PIPE WILL NOT BE PERMITTED MECHANICAL OR FLANGED JOINT PIPE SHALL BE USED TO HELP PREVENT SUCH ROTATION.
 - THE CONTRACTOR SHALL SUBMIT SHOP DRAWINGS OF CASING, METAL SKIDS AND CARRIER PIPE INSTALLATION FOR DESIGN CONSULTANT REVIEW PRIOR TO FABRICATION OF PIPING, CASTING AND APPURTENANCES.

REVISION	DATE	BY

DECATUR, ILLINOIS
 I.L. PROJ.: DEC-3801
 A.I.P. PROJ.: 3-17-0033-XX

LAYOUT	RAW	BAK	JMR
	03/12/08	03/12/08	04/16/08

HANSON
 Hanson Professional Services Inc.
 1525 S.W. 5th St. Suite 200
 Springfield, Illinois 62708-2886
 Offices Nationwide

CONSTRUCT WATER MAIN
 PROPOSED WATER MAIN
 DETAIL SHEET 4

APR. 18. 2008 1:30 PM WALL00723
 I:\AIRPORTS\DECATUR\07A0060\CADD\SHEETS\R-522CON.DWG - DETAILS 4