

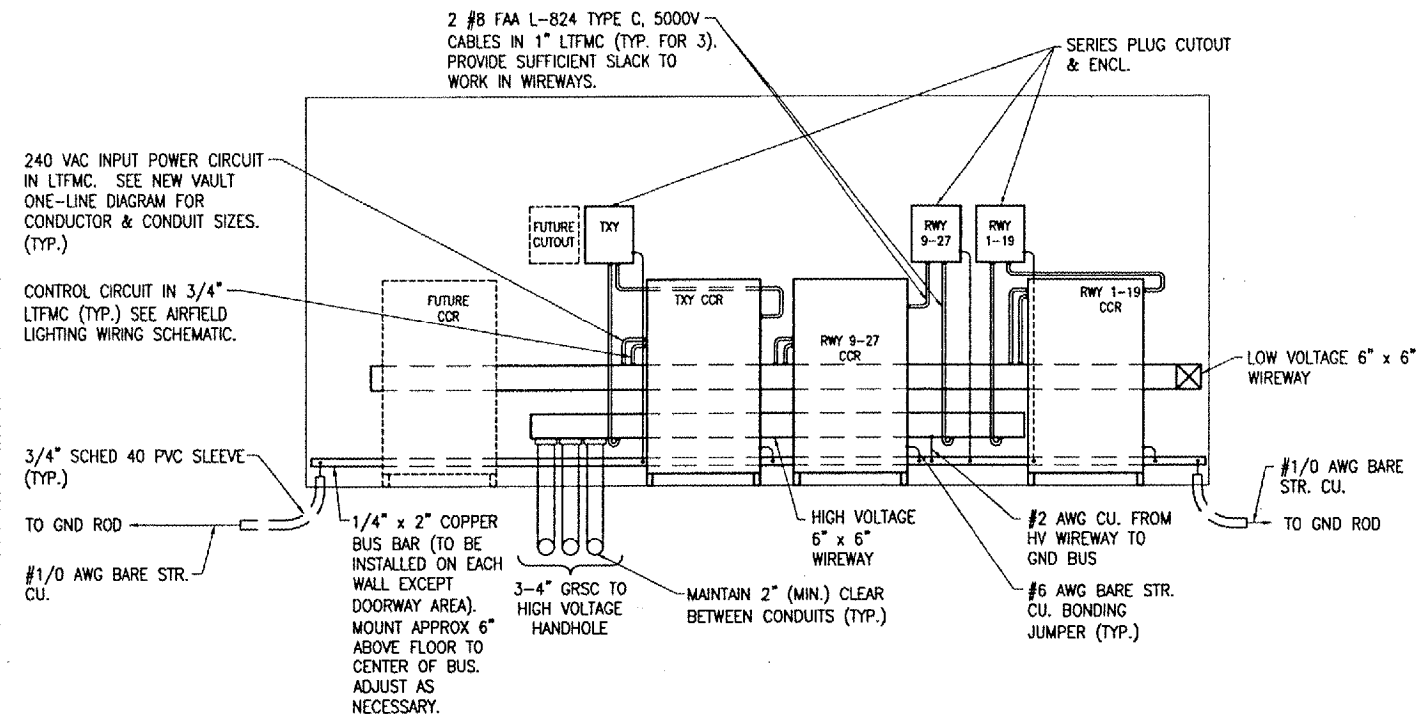
BY	
REVISION	
DATE	

KEWANEE MUNICIPAL AIRPORT
 KEWANEE, HENRY COUNTY, ILLINOIS
 I.L. PROJ.: E2I-3586 A.I.P. PROJ.: 3-17-0058-B12

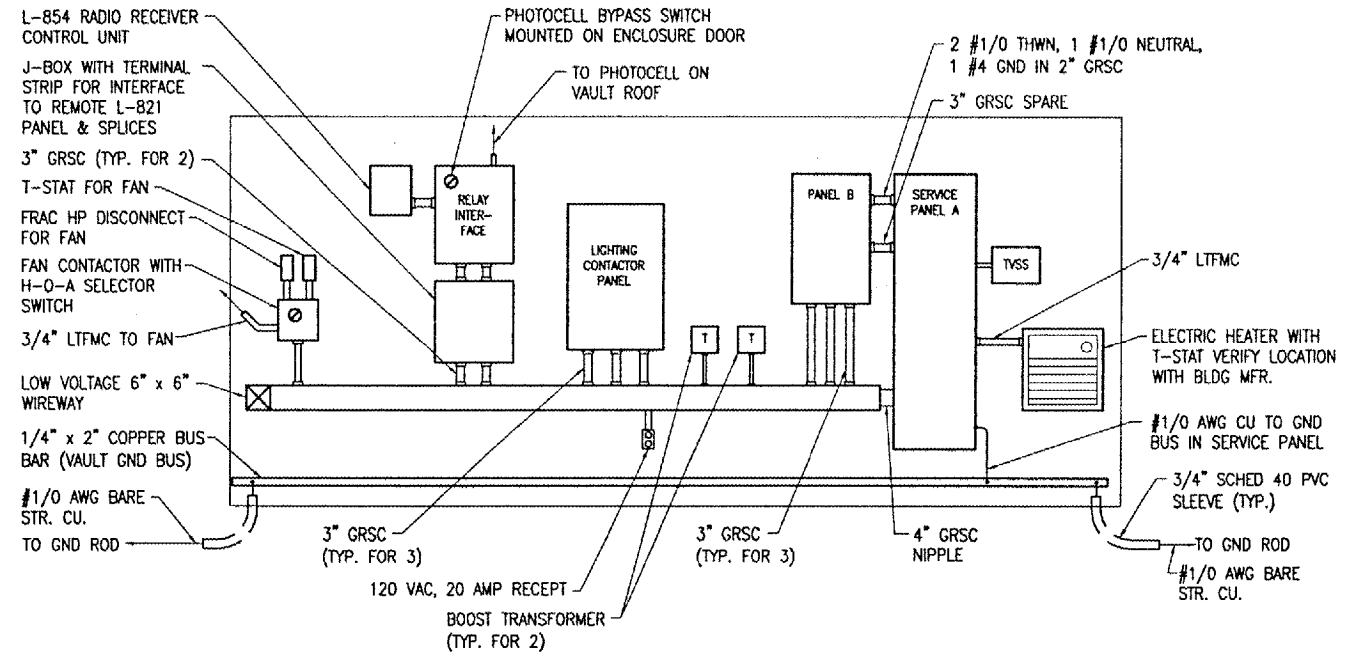
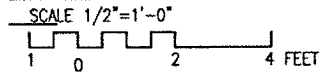
HEL Project No.	810-06VLD
Filename	F-201.DWG
Scale	1/2"=1'-0"
Date	04/01/08
LAYOUT	KNL 09/26/05
DRAWN	AV 09/26/05
REVIEWED	LDP 01/17/06



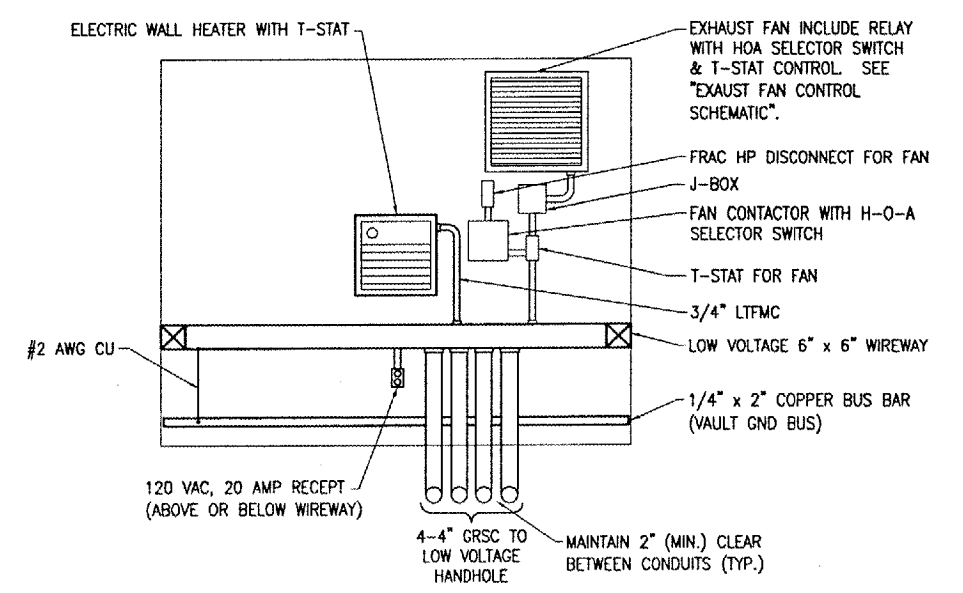
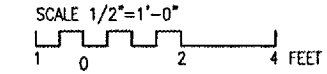
CONSTRUCT VAULT
 PROPOSED
 AIRPORT ELECTRICAL VAULT
 WALL ELEVATIONS



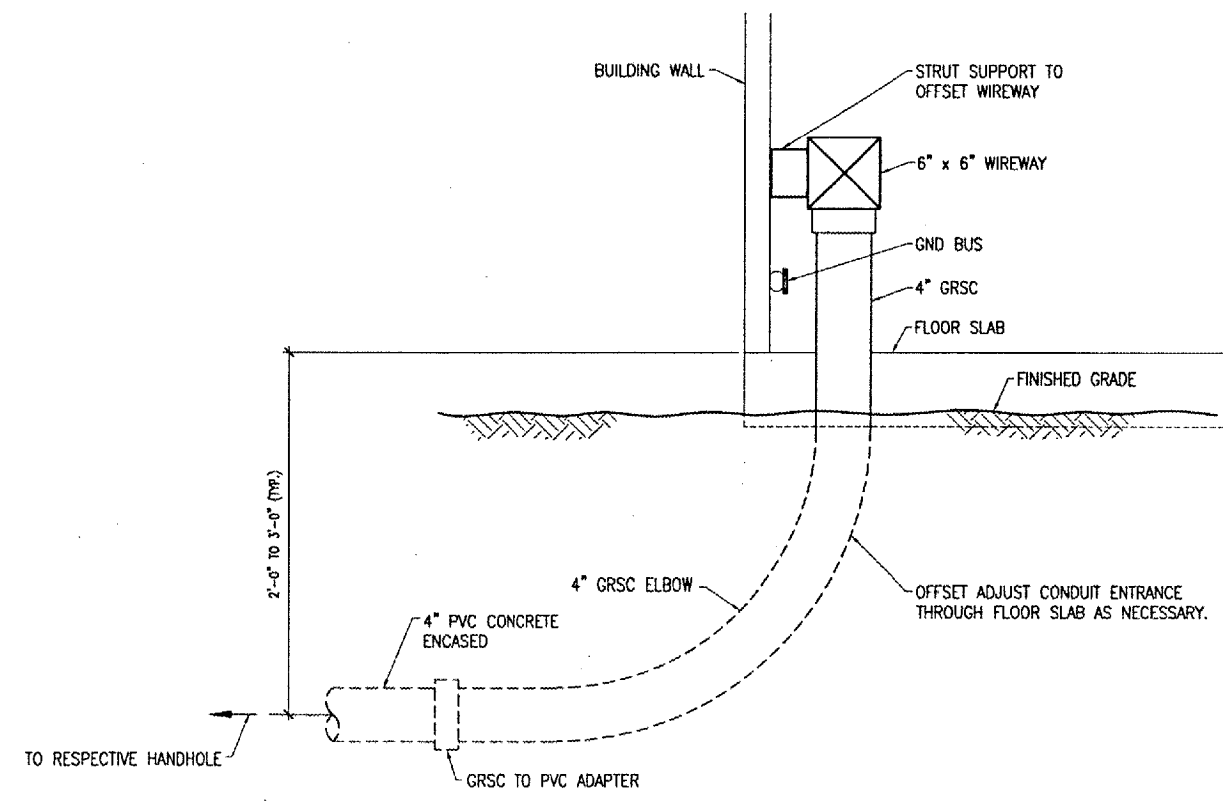
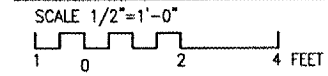
VAULT NORTH WALL ELEVATION



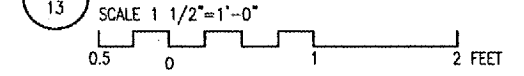
VAULT SOUTH WALL ELEVATION



VAULT EAST WALL ELEVATION



CONDUIT ENTRANCE DETAIL



APR 01, 2008 11:49 AM V00RH00805 I:\AIRPORTS\KEWANEE\810-06VLD\ELECTRICAL\SHEETS\E-201.DWG - Layout1