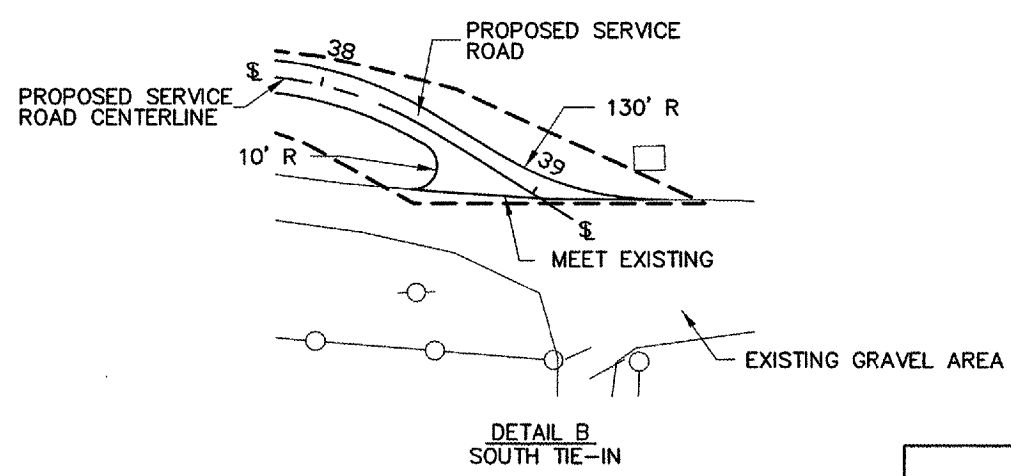
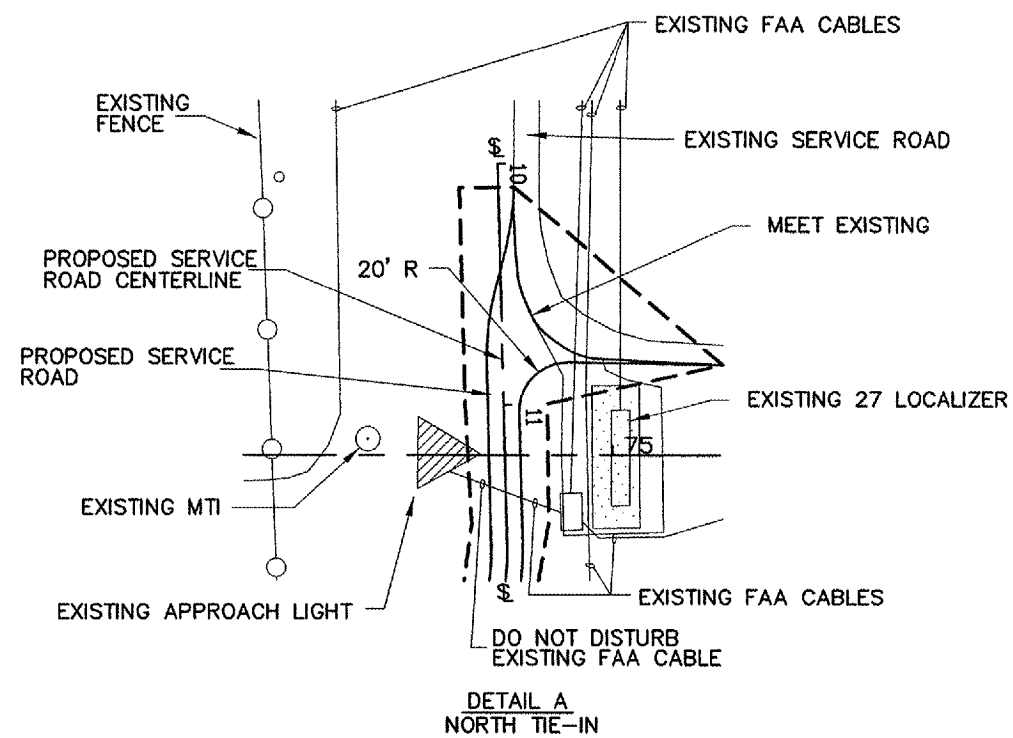
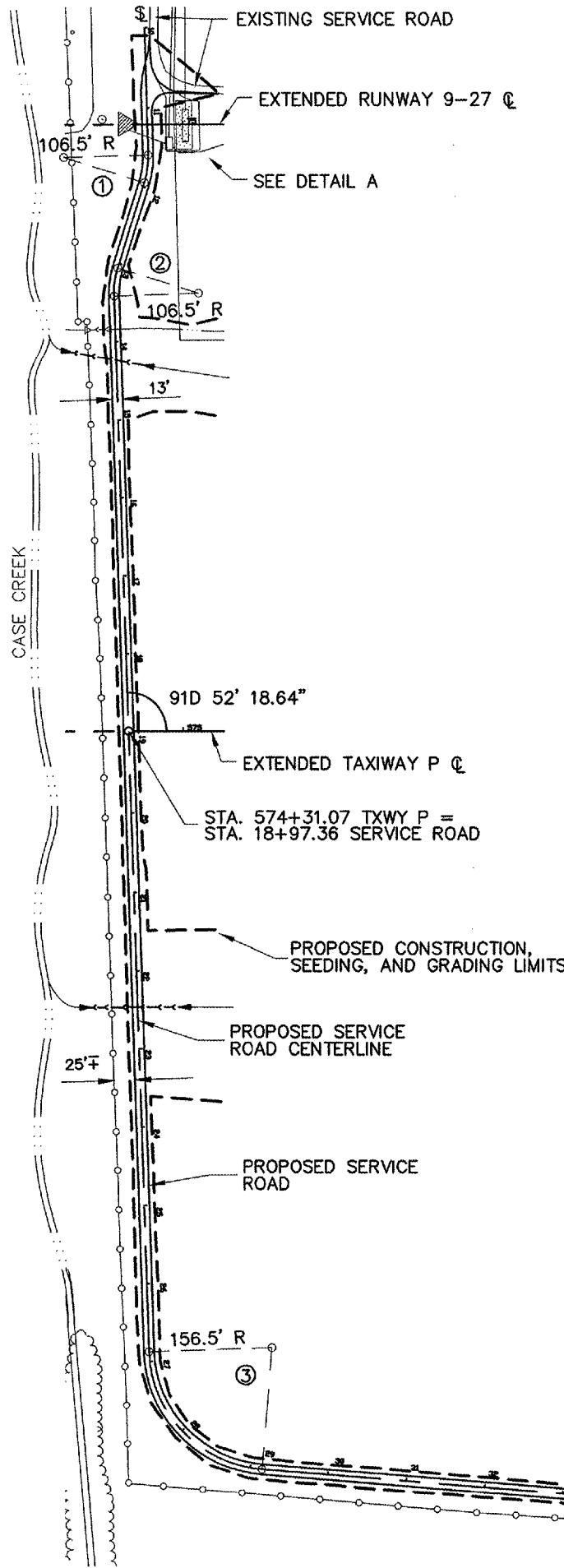
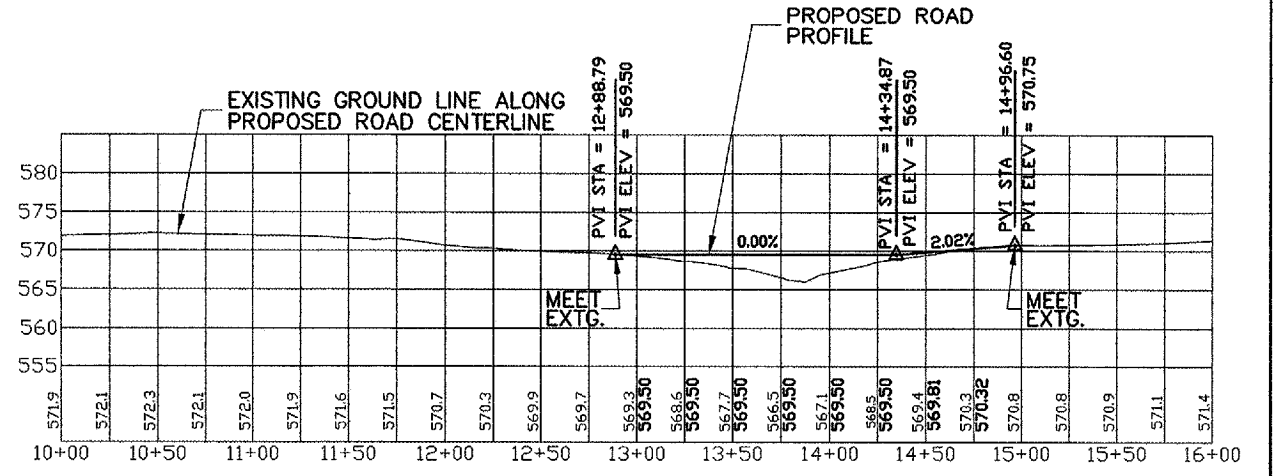
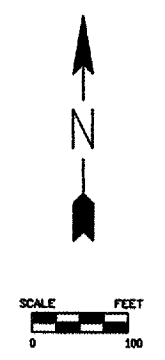


QUAD CITY INTERNATIONAL AIRPORT  
TAXIWAY P, PHASE I - EARTHWORK  
ILL. MLI-3790, QU006  
SHEET 11 OF 94



- LEGEND:**
- ☉ EDGE LIGHT
  - GUIDANCE SIGN
  - ELECTRICAL CABLE
  - STORM SEWER OR UNDERDRAIN
  - ▨ INLET
  - ▽ OUTLET
  - ⊙ STORM MANHOLE
  - ⊙ SANITARY MANHOLE
  - DRAINAGE DITCH
  - CONDUIT OR DUCT BANK
  - SECURITY FENCE
  - ⊙ CENTERLINE CURVE NUMBER
  - ⊙ POWER POLE



**NOTE:** PROPOSED PROFILE FOLLOWS EXISTING GROUND BETWEEN STATIONS 10+80 AND 39+05 (EXCEPT BETWEEN STATIONS 12+88.79 AND 14+96.60 AS SHOWN ABOVE).

**SERVICE ROAD PROFILE**  
STA. 10+00 - 16+00 ONLY

SERVICE ROAD ☉ CURVE DATA						
CURVE NUMBER	①	②	③	④	⑤	⑥
I	18D 48' 57.20"	19D 16' 18.55"	83D 38' 41.72"	36D 53' 23.73"	34D 10' 05.61"	31D 12' 09.24"
D	53D 47' 55.94"	53D 47' 55.94"	36D 36' 38.64"	36D 36' 38.64"	36D 36' 38.64"	36D 36' 38.64"
T	17.65'	18.08'	140.04'	52.20'	48.10'	42.17'
L	34.97'	35.82'	228.47'	100.76'	93.33'	85.23'
R	106.50'	106.50'	156.50'	156.50'	156.50'	156.50'
E	1.45'	1.52'	53.51'	8.48'	7.22'	5.58'
P.C. STA.	11+59.16	13+06.45	26+87.34	34+93.59	36+14.65	37+68.06
P.I. STA.	11+76.81	13+24.53	28+27.38	35+45.79	36+62.75	38+10.23
P.T. STA.	11+94.13	13+42.27	29+15.81	35+94.35	37+07.98	38+53.29

G:\AIRPORT\A07T030 TP EARTHWORK DSNIPPP3.dwg, 4/21/2008 11:38:19 AM, jeffm