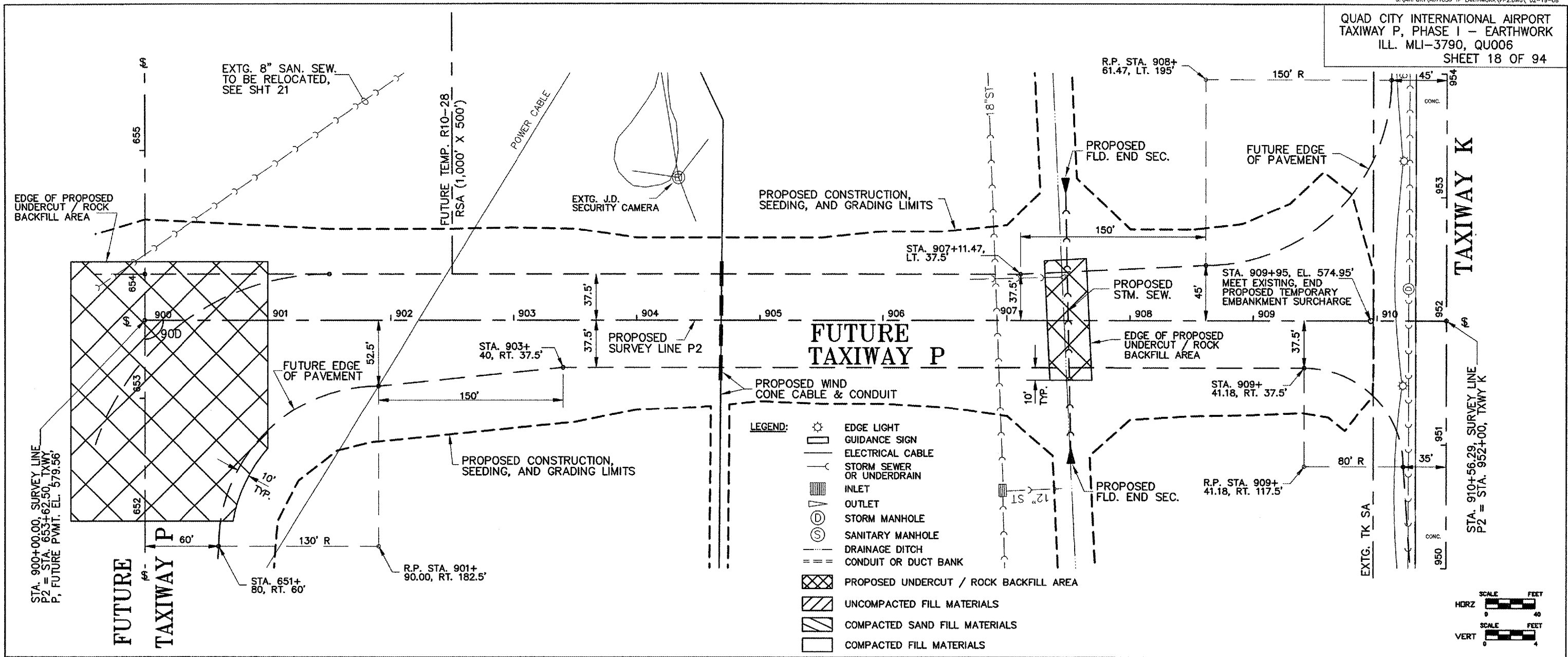
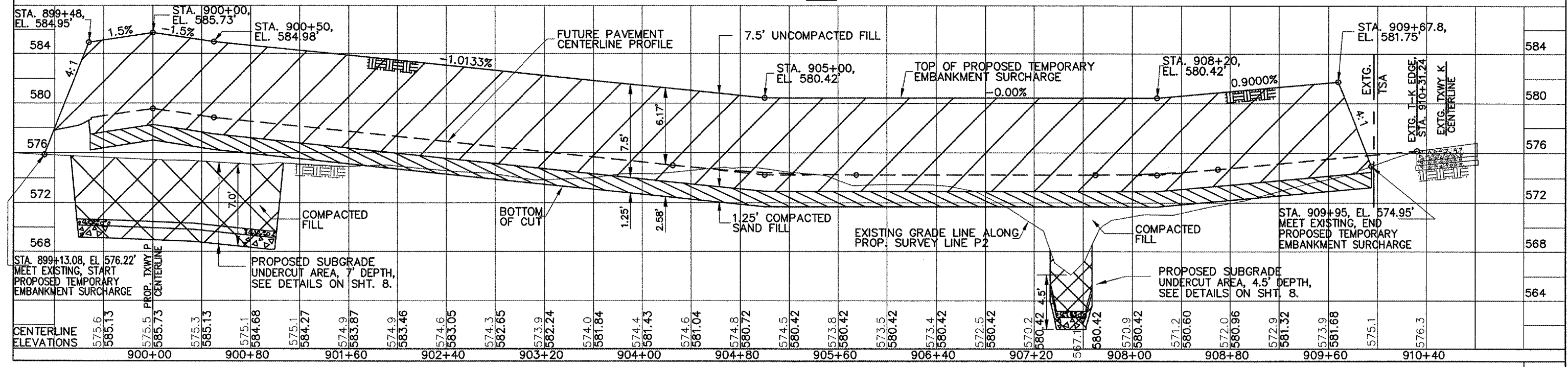
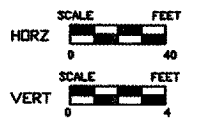


QUAD CITY INTERNATIONAL AIRPORT
TAXIWAY P, PHASE I - EARTHWORK
ILL. MLI-3790, QU006
SHEET 18 OF 94



- LEGEND:**
- EDGE LIGHT
 - GUIDANCE SIGN
 - ELECTRICAL CABLE
 - STORM SEWER OR UNDERDRAIN
 - INLET
 - OUTLET
 - STORM MANHOLE
 - SANITARY MANHOLE
 - DRAINAGE DITCH
 - CONDUIT OR DUCT BANK
 - PROPOSED UNDERCUT / ROCK BACKFILL AREA
 - UNCOMPACTED FILL MATERIALS
 - COMPACTED SAND FILL MATERIALS
 - COMPACTED FILL MATERIALS



SURVEY LINE P2 PLAN & PROFILE STA 900+00 TO STA 910+40 18/94

G:\Airport\A07030 TP EARTHWORK\PP2.DWG, 4/21/2008 11:39:35 AM, jeffm