

Bench Mark: Square "□" cut in west face of high tension tower base, east side of IL Rte 59  
Sta. 3905+18, 79' Rt., Elev. 696.82

Existing Structure: None

**INDEX OF SHEETS**

- SA-1. General Plan & Elevation
- SA-2. Wall Plan & Elevation
- SA-3. Wall Section & Details
- SA-4. Details of Wall at Existing Retaining Wall
- SA-5. Parapet Rolling
- SA-6. Boring Logs

**DESIGN SPECIFICATIONS**

2002 AASHTO Standard Specifications for Highway Bridges, 17th Edition

**DESIGN STRESSES**

**FIELD UNITS**

- $f'_c = 3,500$  psi
- $f_y = 60,000$  psi (reinforcement)
- $f_y = 36,000$  psi (M270 Grade 36)

STATION 3913+83.48

BUILT 2011 BY

STATE OF ILLINOIS

F.A.P. RT. 338

SEC. 2011-036-1

STR. NO. 022-W043

**NAME PLATE**

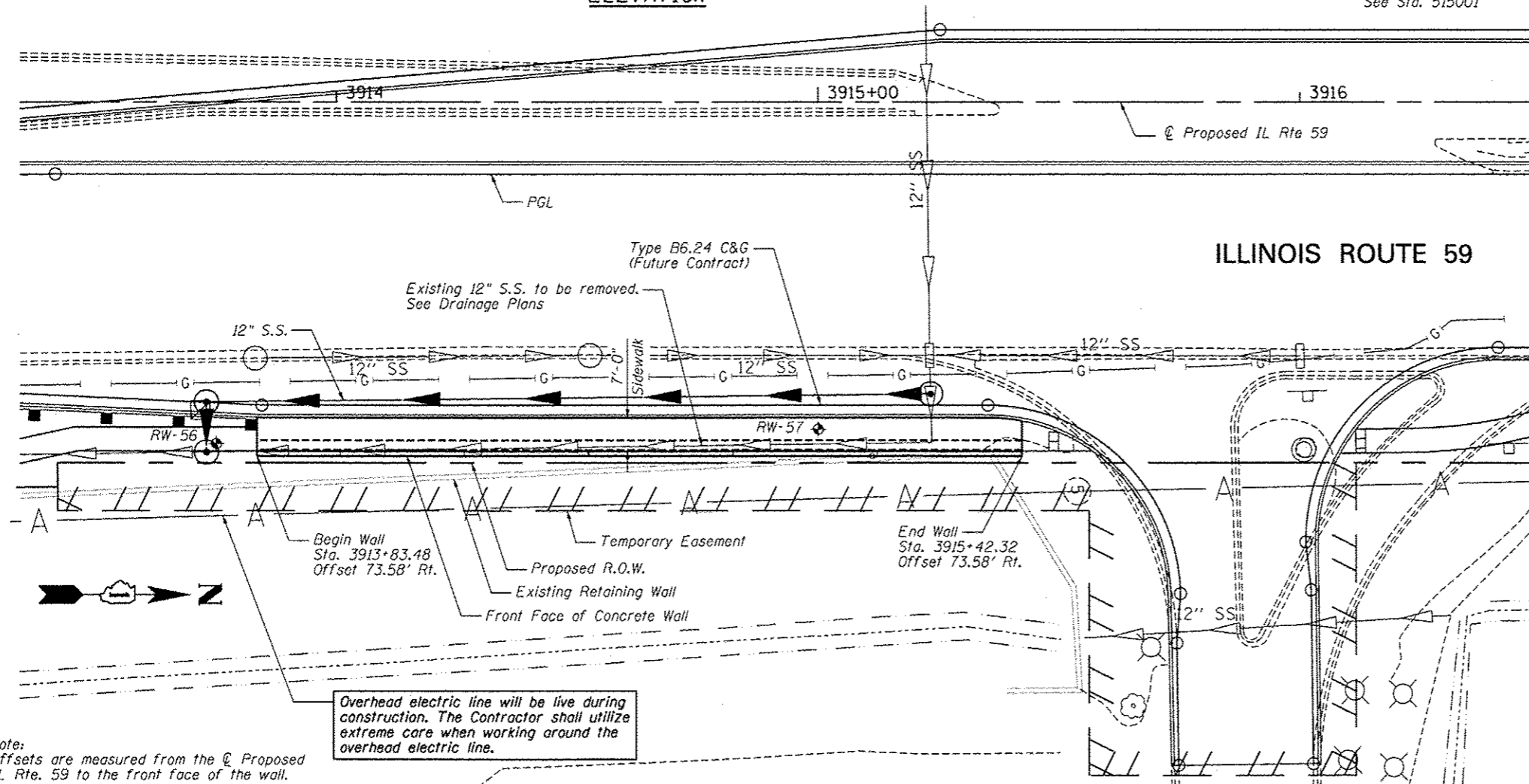
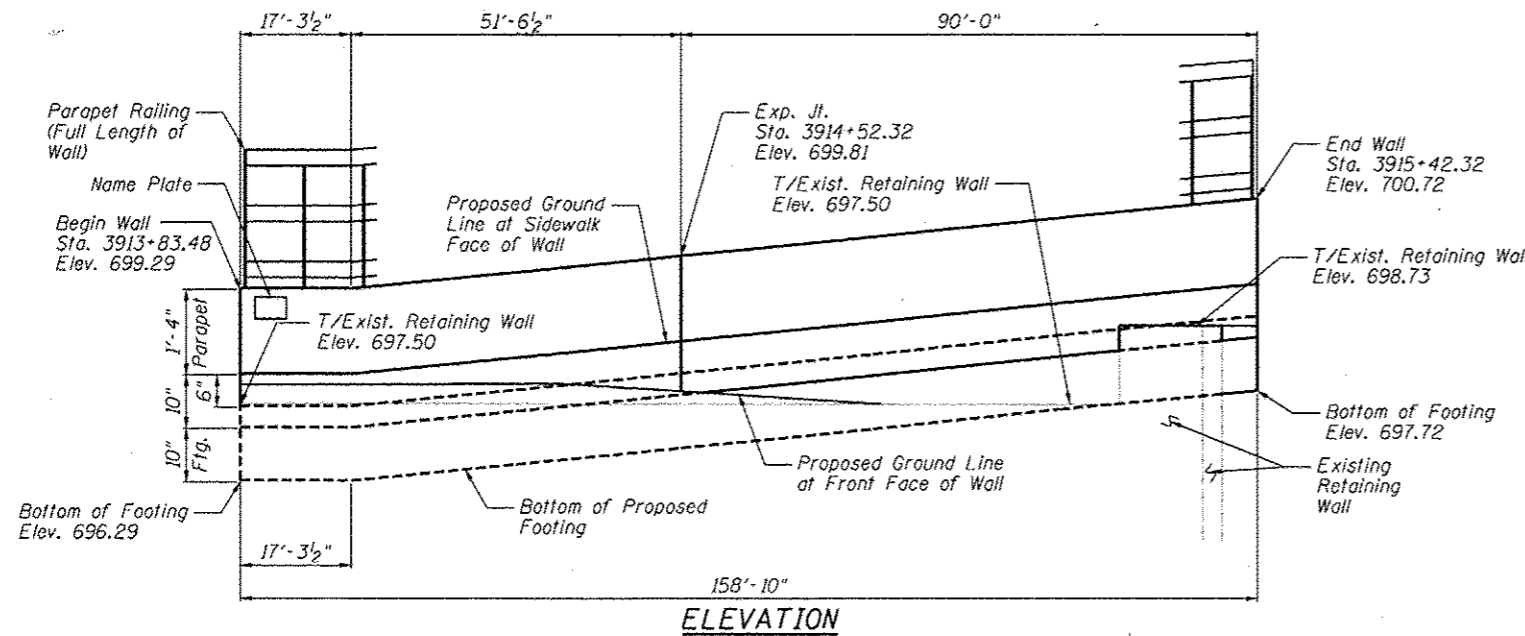
See Std. 515001

**GENERAL NOTES**

1. Reinforcement bars designated (E) shall be epoxy coated.
2. Protective coat shall be applied to exposed surfaces of the top and back face of wall and the top of the sidewalk.
3. Plan dimensions and details relative to existing plans are subject to nominal construction variations. The Contractor shall field verify existing dimensions and details affecting new construction and make necessary approved adjustments prior to construction or ordering of materials. Such variations shall not be cause for additional compensation for a change in scope of the work, however, the Contractor will be paid for the quantity actually furnished at the unit price bid for the work.

**TOTAL BILL OF MATERIAL**

ITEM	UNIT	TOTAL
Structure Excavation	Cu. Yd.	46
Concrete Structures	Cu. Yd.	47.9
Protective Coat	Sq.Yd.	165
Reinforcement Bars, Epoxy Coated	Pound	7,510
Name Plates	Each	1
Parapet Rolling	Foot	159



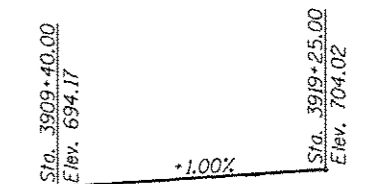
**PLAN**

Note:  
Offsets are measured from the  $\odot$  Proposed IL Rte. 59 to the front face of the wall.

Roadway work will be in future Contract 60R30.

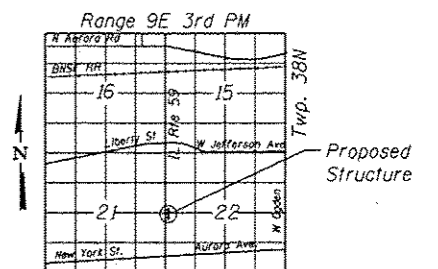


Signature: *Deborah A. Croa* Date: Mar. 7, 2012  
November 30, 2012 Expires



**PROFILE GRADE**

(along edge of pavement proposed IL Route 59)



**LOCATION SKETCH**

**GENERAL PLAN AND ELEVATION**  
**IL RTE 59 FAP RTE 338**  
**SECTION 2011-036-1**  
**DUPAGE COUNTY**  
**STA. 3913+83.48 TO STA. 3915+42.32**  
**SN 022-W043**



USER NAME - SAW	DESIGNED - PMM	REVISIONS
PLOT SCALE - 30.00' / 1" =	CHECKED - DAZ	REVISIONS
PLOT DATE - 5/4/2012	DRAWN - SAW	REVISIONS
	CHECKED - PMM	REVISIONS

**STATE OF ILLINOIS**  
**DEPARTMENT OF TRANSPORTATION**

**GENERAL PLAN & ELEVATION**  
**STA. 3913+83.48 TO STA. 3915+42.32 SN 022-W043**

SHEET NO. SA-1 OF SA-6 SHEETS

F.A.P. RTE.	SECTION	COUNTY	TOTAL SHEETS	SHEET NO.
338	2011-036-1	DUPAGE	234	32
CONTRACT NO. 60P42			ILLINOIS FED. AID PROJECT	