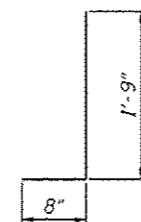


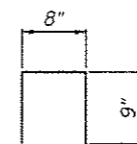
**PROPOSED SIDEWALK
FOUNDATION SECTION**
Maximum Soil Bearing Pressure = 630 psf



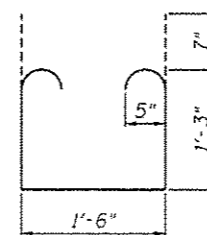
BAR c 101 (E)



BAR d 100 (E)



BAR d 101 (E)



BAR n 100 (E)

BILL OF MATERIAL

Bar	No.	Size	Length	Shape
b 100 (E)	91	#5	25'-10"	—
c 100 (E)	161	#5	7'-8"	—
c 101 (E)	161	#5	6'-4"	—
d 100 (E)	330	#4	2'-5"	⌋
d 101 (E)	36	#4	2'-2"	⌋
e 100 (E)	6	#4	17'-0"	—
e 101 (E)	12	#4	28'-8"	—
e 102 (E)	24	#4	17'-11"	—
e 103 (E)	6	#4	29'-8"	—
n 100 (E)	161	#5	5'-2"	⌋
w 100 (E)	21	#5	25'-10"	—
Item		Unit	Quantity	
Concrete Structures		Cu. Yd.	47.9	
Reinforcement Bars (Epoxy Coated)		Pound	7,510	

**WALL SECTION AND DETAILS
SN 022-W043**