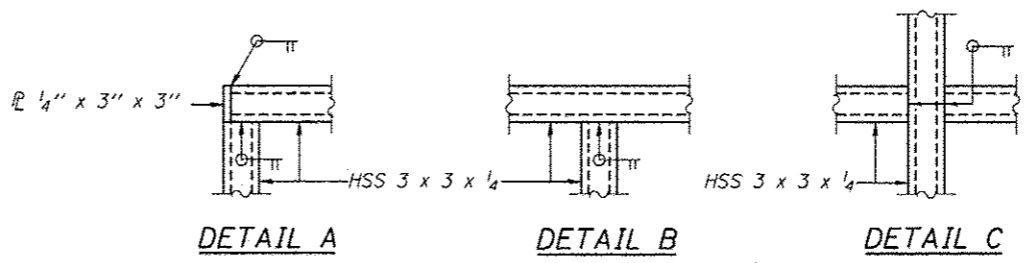
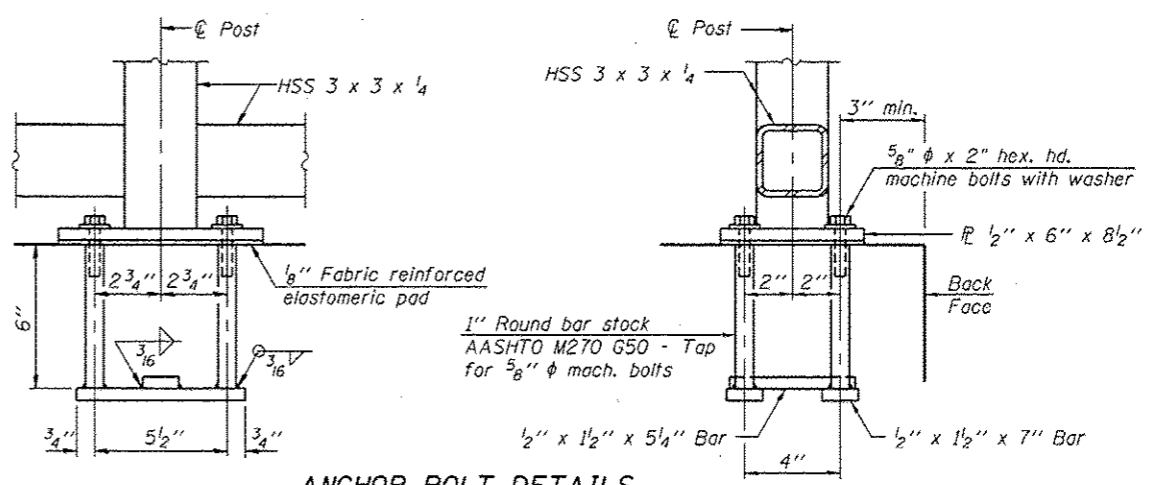
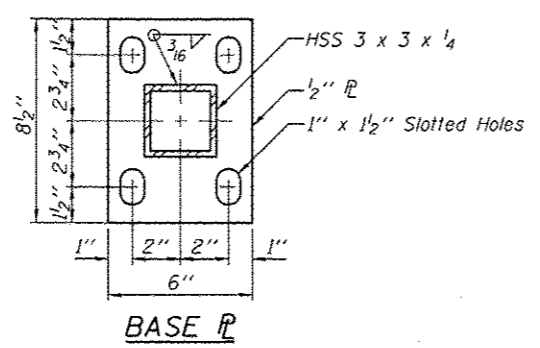


**PARAPET RAILING
ELEVATION**
(Inside Face of Three Element Rail)

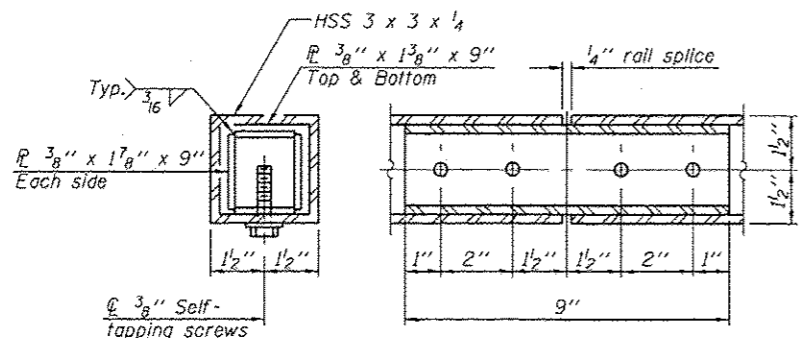


All steel rail elements shall be galvanized according to Article 509.05 of the Standard Specifications.



ANCHOR BOLT DETAILS

In lieu of the cast-in-place anchor device shown, the Contractor has the option of drilling and setting 5/8" anchor rods according to Article 509.06 of the Standard Specifications. Embedment shall be according to the manufacturer's specifications.



RAIL SPLICE

BILL OF MATERIAL

Item	Unit	Quantity
Parapet Railing	Foot	251

**PARAPET RAILING
SN 022-W044**

FILE NAME: ... \SFP-2-0244-285-Parapet Railing.dgn

ZROKA engineering
Zroka Engineering, P.C.
4216 North Hennipago
Chicago, IL 60613

USER NAME: SAW	DESIGNED: LAS	REVISED:
PLOT SCALE: 0.17' / IN.	CHECKED: DAZ	REVISED:
PLOT DATE: 5/4/2012	DRAWN: SAW	REVISED:
	CHECKED: LAS	REVISED:

**STATE OF ILLINOIS
DEPARTMENT OF TRANSPORTATION**

PARAPET RAILING
STA. 3920 + 19.79 TO STA. 3922 + 70.60 SN 022-W044

SHEET NO. SB-5 OF SB-7 SHEETS

F.A.P. RTE.	SECTION	COUNTY	TOTAL SHEETS	SHEET NO.
338	2011-036-1	DUPAGE	234	47
CONTRACT NO. 60P42			ILLINOIS FED. AID PROJECT	