

Bench Mark: Square "□" cut in base of southern most light pole in parking lot at #1778 IL Route 59, Sta. 3966+94, 155' Right, Elev. 701.63

Existing Structure: None

INDEX OF SHEETS

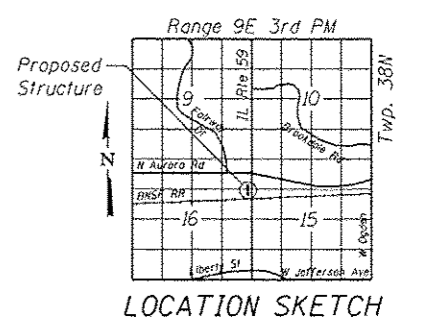
- SC-1. General Plan & Elevation
- SC-2. General Plan & Elevation 2
- SC-3. Soldier Pile Layout 1
- SC-4. Soldier Pile Layout 2
- SC-5. Typical Section
- SC-6. Section Near Railroad Bridge
- SC-7. Details
- SC-8. Concrete Facing 1
- SC-9. Concrete Facing 2
- SC-10. Concrete Facing 3
- SC-11. Concrete Facing & Details
- SC-12. Chain Link Fence
- SC-13. Architectural Finish Details
- SC-14. Pile Splice Details
- SC-15. Boring Logs 1
- SC-16. Boring Logs 2
- SC-17. Boring Logs 3



Deborah A. Johnson
 Signature Date 7-11-12
 November 30, 2012
 Expires

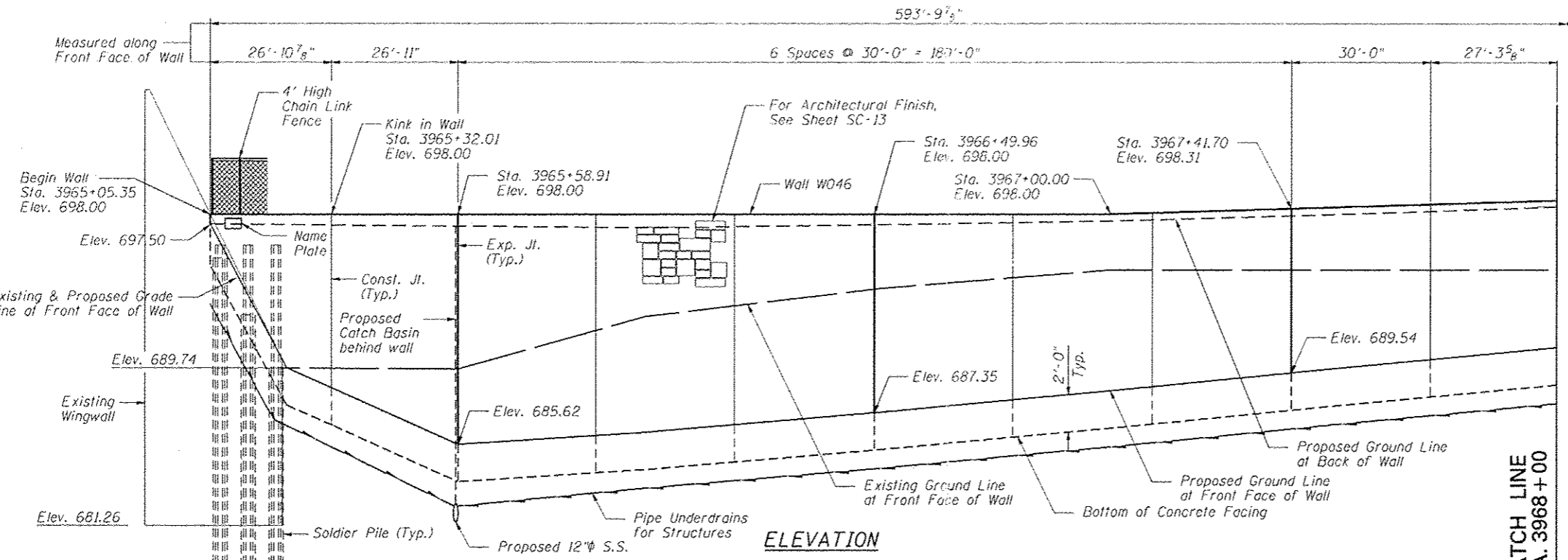
APPROVED
 For Structural Adequacy Only
H. Carl Pungert, P.E.
 Engineer of Bridges & Structures

Notes:
 Offsets are measured from the @ Proposed IL Rte 59 to the front face of the wall. Front face of wall does not include architectural finish. See Detail on Sheets SC-5 & SC-6.
 For Section A-A, see Sheet SC-6 of SC-16.
 Soldier piles not shown for clarity.
 Roadway work will be in future Contract 60R30.
 Buried utilities that cross SN 022-W046 will be relocated by others, except that the buried electric line will be relocated in this contract.

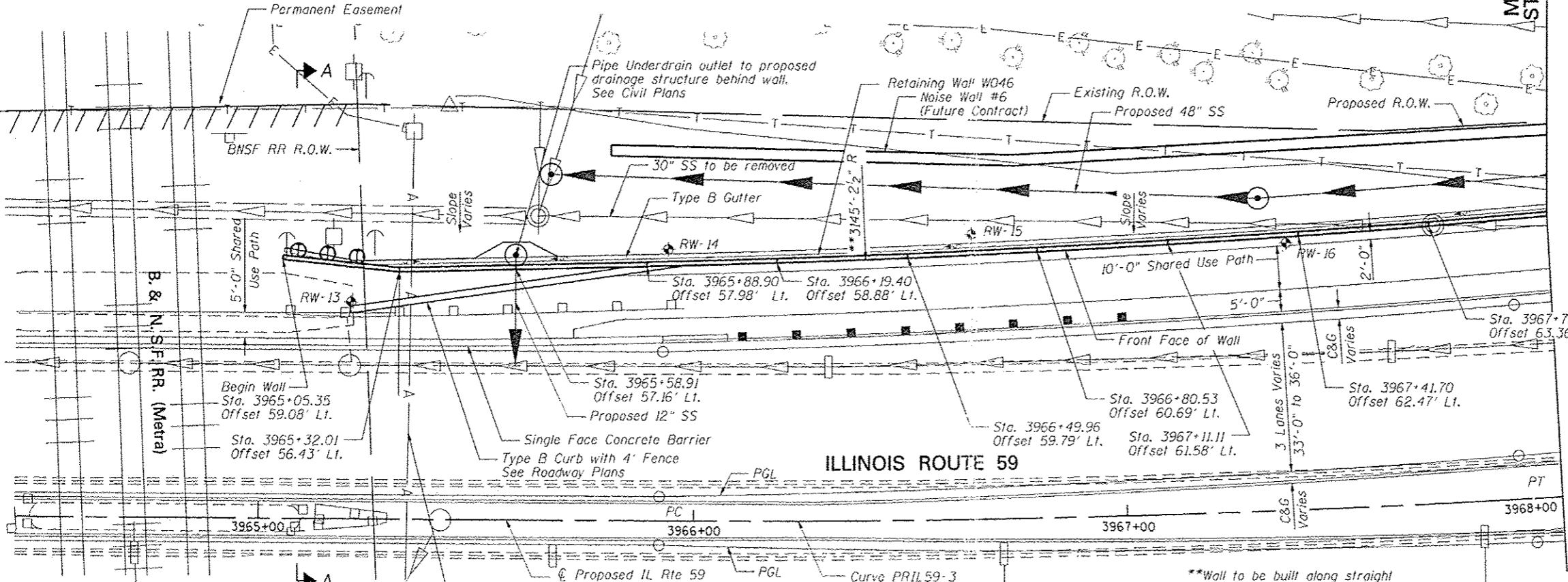


GENERAL PLAN & ELEVATION
 IL RTE 59 FAP RTE 338
 SECTION 2011-036-1
 DUPAGE COUNTY
 STA. 3965+05.35 TO STA. 3971+00.00
 SN 022-W046

Rev. 7-24-12



ELEVATION

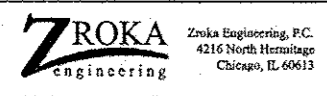


ILLINOIS ROUTE 59

PLAN

Overhead electric line will be live during construction. Piles in this area may need to be spliced. Pile splices required due to these live electric lines shall not be paid for separately but shall be included in the cost of Furnishing Soldier Piles

**Wall to be built along straight chords between construction joints.



USER NAME - SAW	DESIGNED - LAS	REVISED -
PLOT SCALE - 3/8" = 1' IN.	CHECKED - DAZ	REVISED -
PLOT DATE - 7/18/2012	DRAWN - SAW	REVISED -
	CHECKED - LAS	REVISED -

STATE OF ILLINOIS
 DEPARTMENT OF TRANSPORTATION

GENERAL PLAN & ELEVATION
 STA. 3965+05.35 TO STA. 3971+00.00 SN 022-W046
 SHEET NO. SC-1 OF SC-17 SHEETS

F.A.P. RTE.	SECTION	COUNTY	TOTAL SHEETS	SHEET NO.
338	2011-036-1	DUPAGE	234	54
CONTRACT NO. 60P42			ILLINOIS FED. AID PROJECT	