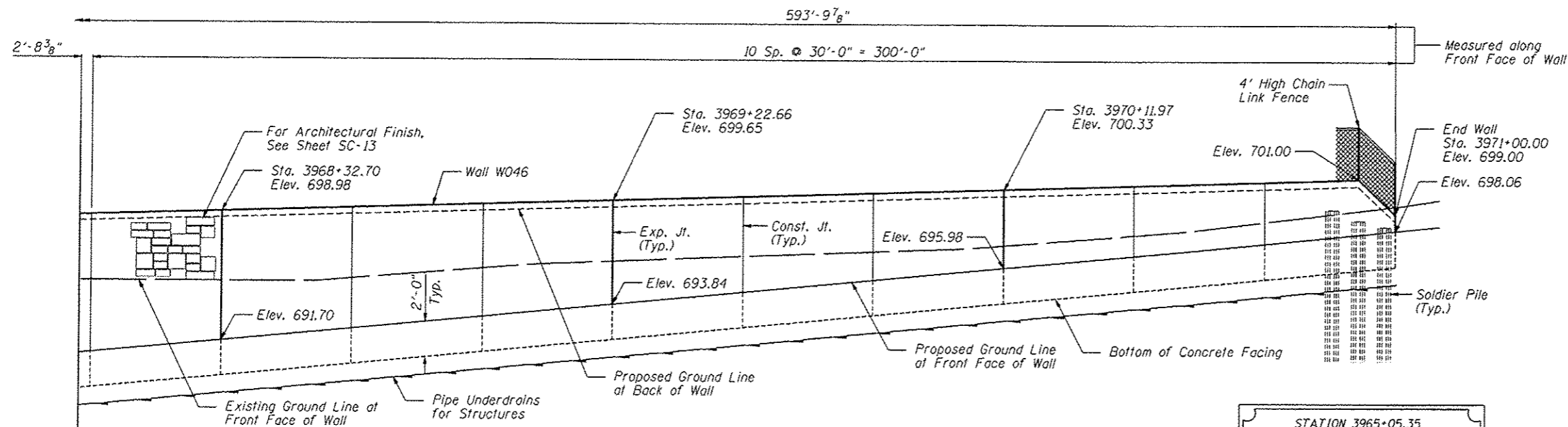


GENERAL NOTES

1. Reinforcement bars designated (E) shall be epoxy coated.
2. The Contractor is responsible for the design and performance of the logging using no less than 3" nominal rough-sawn thickness and timber with a minimum allowable bending stress of 1000 psi.
3. Protective coat shall be applied to exposed surfaces of the front face and top of wall.
4. Calculated length of Furnishing Soldier Piles (W Section) = 1248 Feet (W18x86) and 1152 Feet (W33x141)

TOTAL BILL OF MATERIAL

ITEM	UNIT	TOTAL
Structure Excavation	Cu. Yd.	897
Concrete Structures	Cu. Yd.	234.9
Protective Coat	Sq. Yd.	593
Stud Shear Connectors	Each	707
Reinforcement Bars, Epoxy Coated	Pound	29,710
Name Plates	Each	1
Geocomposite Wall Drain	Sq. Yd.	368
Untreated Timber Logging	Sq. Ft.	4,368
Furnishing Soldier Piles (W Section)	Foot	2,400
Pipe Underdrains for Structures, 4"	Foot	594
Drilling and Setting Soldier Piles (In Soil)	Cu. Ft.	14,953
Drilling and Setting Soldier Piles (In Rock)	Cu. Ft.	1,618
Form Liner Textured Surface	Sq. Ft.	3,264
Chain Link Fence 4', Attached to Structure	Foot	594

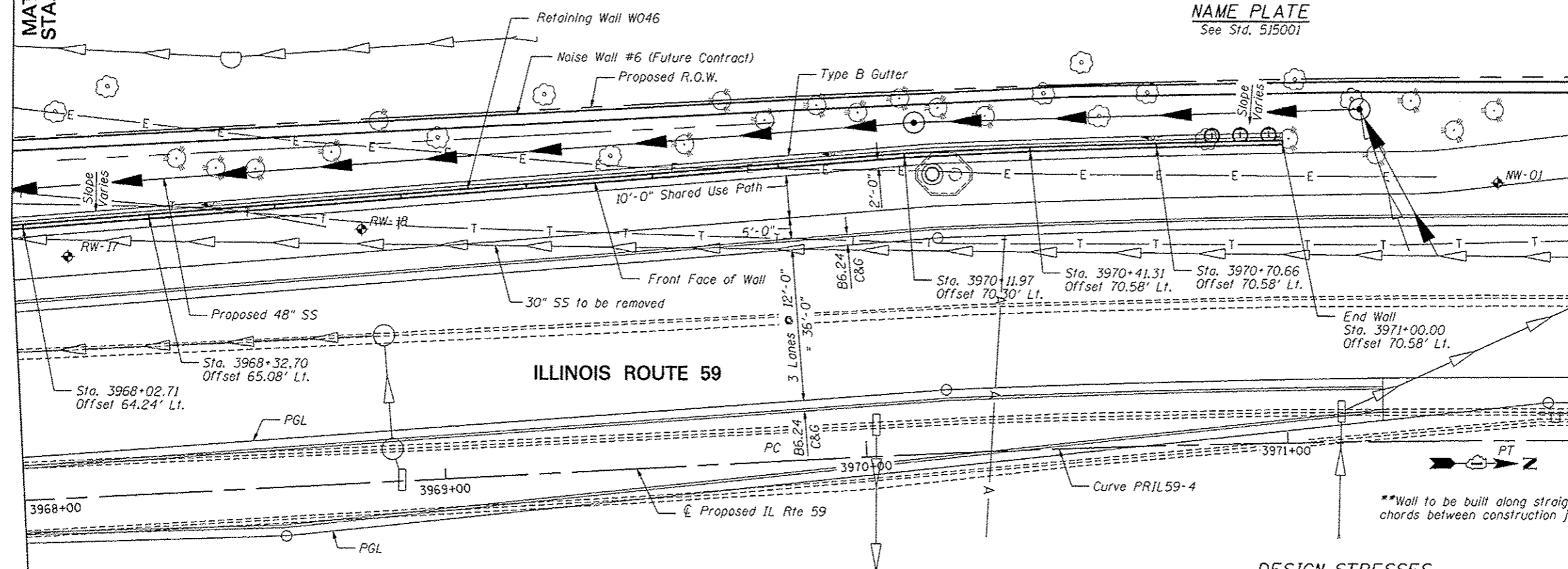


ELEVATION

STATION 3965+05.35
 BUILT 2011 BY
 STATE OF ILLINOIS
 F.A.P. RT. 338
 SEC. 2011-036-1
 STR. NO. 022-W046

NAME PLATE
 See Std. 515001

MATCH LINE
 STA. 3968+00

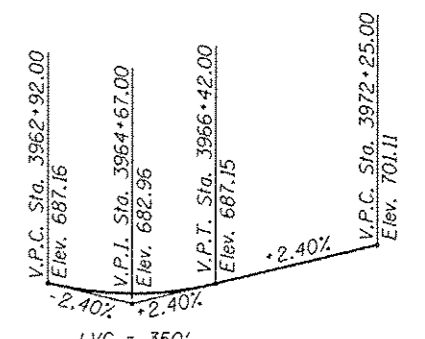


PLAN

DESIGN SPECIFICATIONS
 2002 AASHTO Standard Specifications
 for Highway Bridges, 17th Edition

DESIGN STRESSES

FIELD UNITS
 $f'_c = 3,500$ psi
 $f_y = 60,000$ psi (reinforcement)
 $f_y = 36,000$ psi (M270 Grade 36)



PROFILE GRADE
 (along inside edge of pavement,
 proposed IL Route 59)

HORIZONTAL CURVE DATA

Proposed Curve PRIL59-3
 PI Sta. = 3966+92.83
 $\Delta = 3^\circ 39' 58''$ (LT)
 $D = 1^\circ 49' 07''$
 $R = 3,150.48'$
 $T = 100.83'$
 $L = 201.59'$
 $E = 1.61'$
 P.C. Sta. = 3965+92.00
 P.T. Sta. = 3967+93.59

Proposed Curve PRIL59-4
 PI Sta. = 3970+83.74
 $\Delta = 3^\circ 39' 58''$ (RT)
 $D = 1^\circ 48' 43''$
 $R = 3,162.19'$
 $T = 101.20'$
 $L = 202.33'$
 $E = 1.62'$
 P.C. Sta. = 3969+82.54
 P.T. Sta. = 3971+84.87

GENERAL PLAN & ELEVATION 2
SN 022-W046

Notes:
 Offsets are measured from the \odot Proposed IL Rte 59 to the front face of the wall.
 Soldier piles not shown for clarity.
 Roadway work will be in future Contract 60R30.
 Buried utilities that cross SN 022-W046 will be relocated by others, except that the buried electric line will be relocated in this contract.

FILE NAME: ...G0P42-W046-002-CPE2.dwg

ZROKA Engineering
 Zroka Engineering, P.C.
 4216 North Hermitage
 Chicago, IL 60613

USER NAME - SAW	DESIGNED - LAS	REVISED - ADDENDUM A 7/16/12
PLOT SCALE - 3/8" = 1'	CHECKED - DAZ	REVISED -
PLOT DATE - 7/8/2012	DRAWN - SAW	REVISED -
	CHECKED - LAS	REVISED -

STATE OF ILLINOIS
DEPARTMENT OF TRANSPORTATION

GENERAL PLAN & ELEVATION 2
STA. 3965 + 05.35 TO STA. 3971 + 00.00 SN 022-W046

F.A.P. RTE. 338	SECTION 2011-036-1	COUNTY DUPAGE	TOTAL SHEETS 234	SHEET NO. 55
CONTRACT NO. 60P42				

SHEET NO. SC-2 OF SC-17 SHEETS

ILLINOIS FED. AID PROJECT