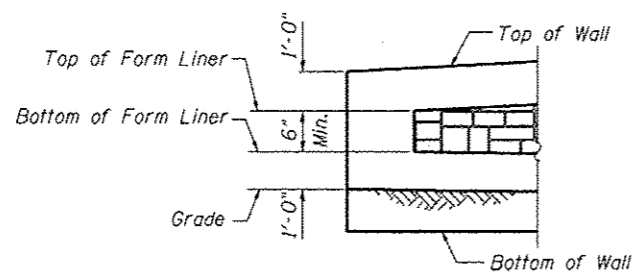
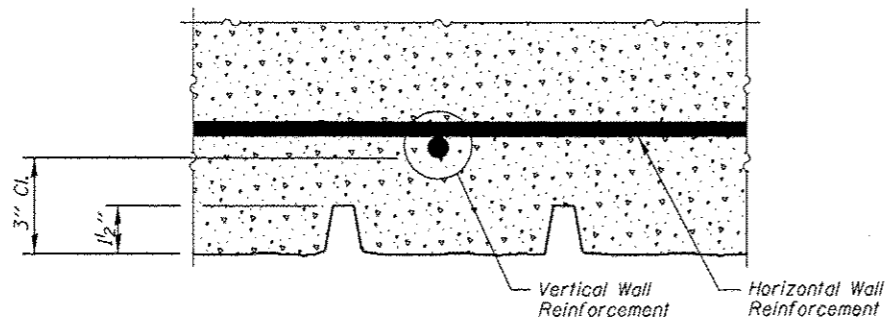


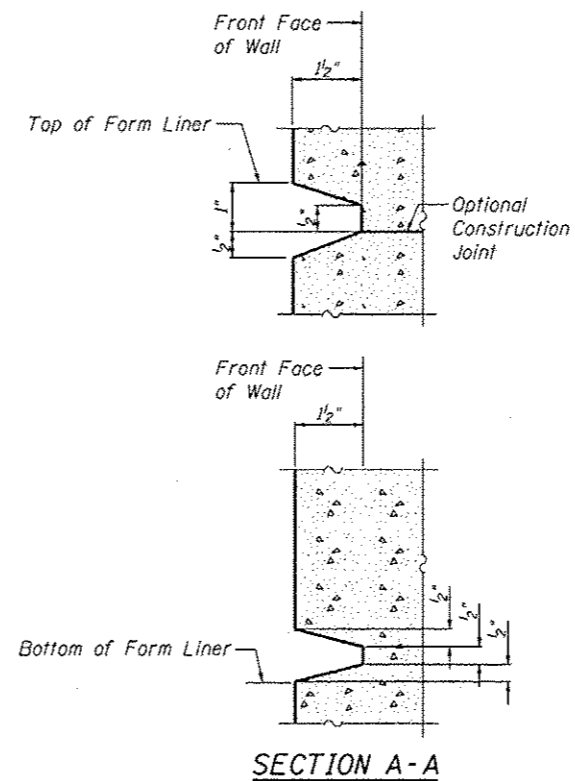
ELEVATION - FORM LINER



END FORM LINER FINISH



PLAN - FORM LINER



FORM LINER ELEVATION TABLE

Station	Form Liner Top Elevation	Form Liner Bottom Elevation
3965+05.35	None	None
3965+09.65	697.00	696.50
3965+22.16	697.00	690.74
3965+32.01	697.00	689.62
3965+58.91	697.00	686.62
3965+88.90	697.00	687.20
3966+19.40	697.00	687.77
3966+49.96	697.00	688.35
3966+80.53	697.00	689.08
3967+00.00	697.00	689.54
3967+11.11	697.08	689.81
3967+41.70	697.31	690.54
3967+72.30	697.53	691.26
3968+02.71	697.75	691.98
3968+32.70	697.98	692.70
3968+62.69	698.20	693.41
3968+92.68	698.43	694.13
3969+22.66	698.65	694.84
3969+52.65	698.88	695.55
3969+82.64	699.10	696.27
3970+11.97	699.33	696.98
3970+41.31	699.55	697.67
3970+70.66	699.78	698.37
3970+96.09	700.00	698.97
3971+00.00	None	None

**ARCHITECTURAL FINISH DETAILS
SN 022-W046**

FILE NAME: ... \SBR\2-2816-813-archFinsh.dgn

ZROKA engineering
Zroka Engineering, P.C.
4216 North Hermitage
Chicago, IL 60613

USER NAME = SAW	DESIGNED - LAS	REVISED -
	CHECKED - DAZ	REVISED -
PLOT SCALE = 0.1667" / 1"	DRAWN - SAW	REVISED -
PLOT DATE = 5/4/2012	CHECKED - LAS	REVISED -

**STATE OF ILLINOIS
DEPARTMENT OF TRANSPORTATION**

**ARCHITECTURAL FINISH DETAILS
STA. 3965+05.35 TO STA. 3971+00.00 SN 022-W046**

SHEET NO. SC-13 OF SC-17 SHEETS

F.A.P. RTE.	SECTION	COUNTY	TOTAL SHEETS	SHEET NO.
338	2011-036-1	DUPAGE	234	66
CONTRACT NO. 60P42				
ILLINOIS FED. AID PROJECT				