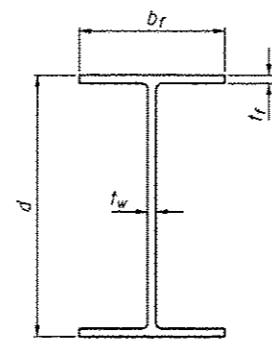
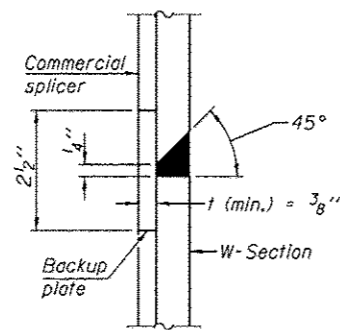


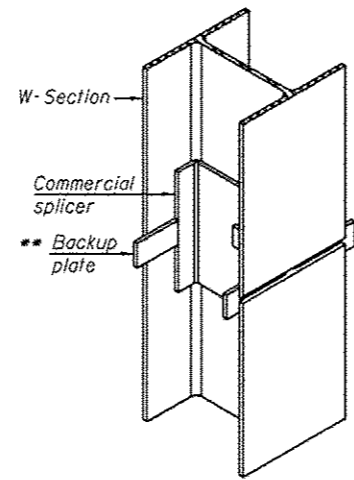
ELEVATION



Designation	Depth d	Flange width b <sub>f</sub>	Flange thickness t <sub>f</sub>	Web thickness t <sub>w</sub>	Encasement diameter A
W33x141	33 1/4"	11 1/2"	1 5/16"	5/8"	42"

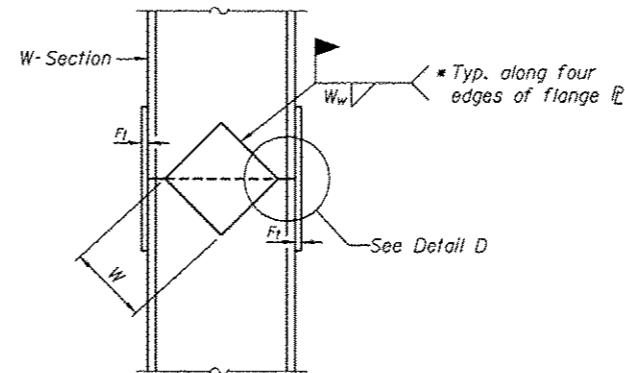


DETAIL "B"

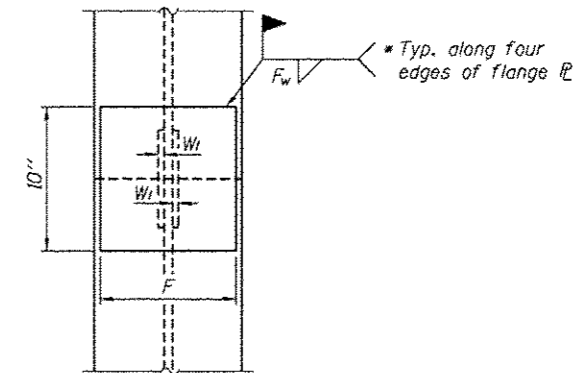


ISOMETRIC VIEW

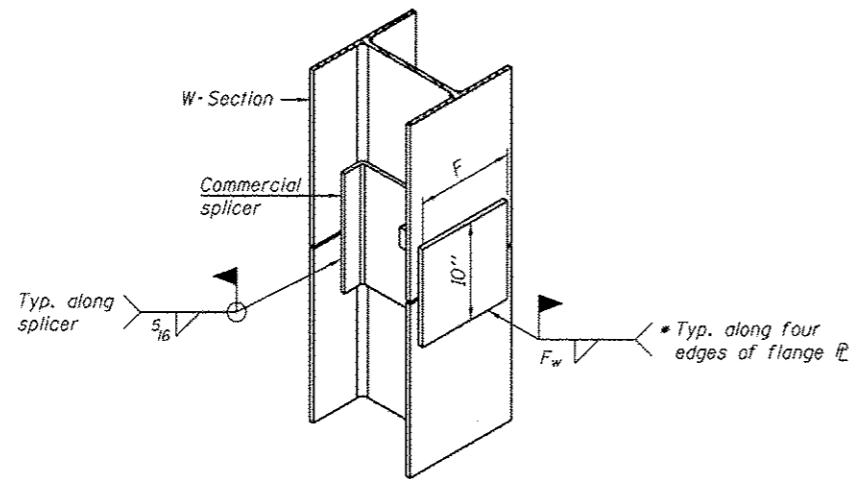
WELDED COMMERCIAL SPLICE



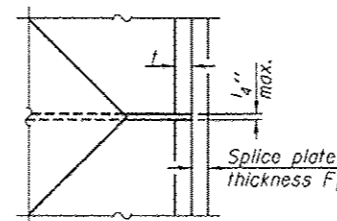
ELEVATION



END VIEW



ISOMETRIC VIEW



DETAIL D

Designation	F	F <sub>1</sub>	F <sub>w</sub>	W	W <sub>1</sub>	W <sub>w</sub>
W33x141	9"	1 1/4"	1"	21"	5/8"	1/2"

WELDED PLATE FIELD SPLICE

WELDED COMMERCIAL SPLICE ALTERNATE

- \* Interrupt welds 1/4" from end of web and/or each flange.
- \*\* Remove portions of backup plates that extend outside the flanges.

Note:  
The steel W-Sections shall be according to AASHTO M270 Grade 36.

PILE SPLICE DETAILS  
SN 022-W046

FILE NAME: ... \SP42-W046-01-PlateSpliceDetail.dgn

USER NAME = SAW	DESIGNED - LAS	REVISED -
	CHECKED - DAZ	REVISED -
PLOT SCALE = 0.1667' / 1"	DRAWN - SAW	REVISED -
PLOT DATE = 5/4/2012	CHECKED - LAS	REVISED -

F.A.P. RTE.	SECTION	COUNTY	TOTAL SHEETS	SHEET NO.
338	2011-036-1	DUPAGE	234	67
				CONTRACT NO. 60P42
ILLINOIS FED. AID PROJECT				