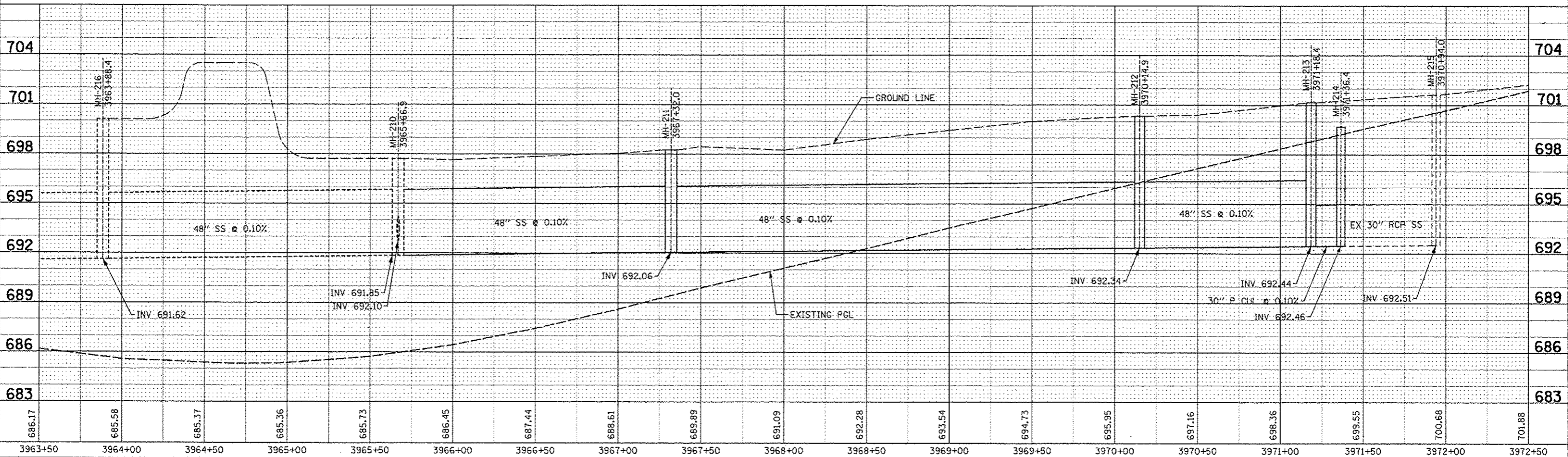
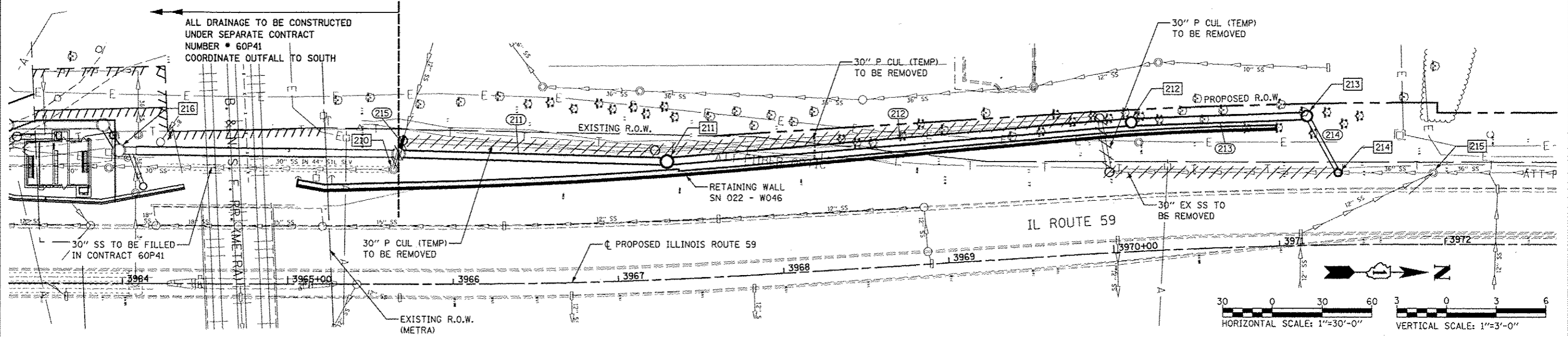


- [210] STA 3965+66.9, 79.0 LT EXISTING MANHOLE, 7' DIA. RIM EL 698.00 INV EL 691.85 (N) 48" INV EL 691.85 (S) 48" INV EL 777.77 (W) 7"
- [211] STA 3967+32.0, 71.5 LT MANHOLE TYPE A, 7' DIA. TYPE 1 FRAME, CLOSED LID RIM EL 698.38 INV EL 692.06 (N) 48" INV EL 692.06 (S) 48"
- [212] STA 3970+15.0, 78.5 LT MANHOLE TYPE A, 6' DIA. TYPE 1 FRAME, CLOSED LID RIM EL 700.33 INV EL 692.34 (N) 48" INV EL 692.34 (S) 48"
- [213] STA 3971+18.0, 78.5 LT MANHOLE TYPE A, 6' DIA. TYPE 1 FRAME, CLOSED LID RIM EL 701.15 INV EL 692.44 (S) 48" INV EL 692.44 (NE) 30"
- [214] STA 3971+36.0, 43.8 LT MANHOLE TYPE A, 5' DIA. TYPE 1 FRAME, CLOSED LID RIM EL 699.68 INV EL 692.46 (SW) 30" INV EL 692.46 (N) 30"
- [215] STA 3971+92.9, 43.4 LT EXISTING MANHOLE, 5' DIA. RIM EL 701.64 INV EL 692.51 (N) 30" INV EL 692.51 (S) 30"
- [216] STA 3963+88.4, 64.5 LT EXISTING MANHOLE, 5' DIA. RIM EL 701.64 INV EL 691.62 (W) 48" INV EL 691.62 (N) 48"
- [211] 158' - 48" SS CLASS A, TYPE 1 @ 0.10%
- [212] 277' - 48" SS CLASS A, TYPE 1 @ 0.10%
- [213] 102' - 48" SS CLASS A, TYPE 2 @ 0.10%
- [214] 34' - 30" P CUL CL C TY 2 TEMP @ 0.10%
- [215] 8' - 12" SS CL A TY 2 @ 0.10%

STORM SEWER REMOVAL - 30"  
 STA 3970+03.0 TO 3971+39.9 - 138'



DATE	
BY	
REVISED	
NO. 1	
NO. 2	
NO. 3	
NO. 4	
NO. 5	
NO. 6	
NO. 7	
NO. 8	
NO. 9	
NO. 10	
NO. 11	
NO. 12	
NO. 13	
NO. 14	
NO. 15	
NO. 16	
NO. 17	
NO. 18	
NO. 19	
NO. 20	
NO. 21	
NO. 22	
NO. 23	
NO. 24	
NO. 25	
NO. 26	
NO. 27	
NO. 28	
NO. 29	
NO. 30	
NO. 31	
NO. 32	
NO. 33	
NO. 34	
NO. 35	
NO. 36	
NO. 37	
NO. 38	
NO. 39	
NO. 40	
NO. 41	
NO. 42	
NO. 43	
NO. 44	
NO. 45	
NO. 46	
NO. 47	
NO. 48	
NO. 49	
NO. 50	
NO. 51	
NO. 52	
NO. 53	
NO. 54	
NO. 55	
NO. 56	
NO. 57	
NO. 58	
NO. 59	
NO. 60	
NO. 61	
NO. 62	
NO. 63	
NO. 64	
NO. 65	
NO. 66	
NO. 67	
NO. 68	
NO. 69	
NO. 70	
NO. 71	
NO. 72	
NO. 73	
NO. 74	
NO. 75	
NO. 76	
NO. 77	
NO. 78	
NO. 79	
NO. 80	
NO. 81	
NO. 82	
NO. 83	
NO. 84	
NO. 85	
NO. 86	
NO. 87	
NO. 88	
NO. 89	
NO. 90	
NO. 91	
NO. 92	
NO. 93	
NO. 94	
NO. 95	
NO. 96	
NO. 97	
NO. 98	
NO. 99	
NO. 100	

DATE	
BY	
REVISED	
NO. 1	
NO. 2	
NO. 3	
NO. 4	
NO. 5	
NO. 6	
NO. 7	
NO. 8	
NO. 9	
NO. 10	
NO. 11	
NO. 12	
NO. 13	
NO. 14	
NO. 15	
NO. 16	
NO. 17	
NO. 18	
NO. 19	
NO. 20	
NO. 21	
NO. 22	
NO. 23	
NO. 24	
NO. 25	
NO. 26	
NO. 27	
NO. 28	
NO. 29	
NO. 30	
NO. 31	
NO. 32	
NO. 33	
NO. 34	
NO. 35	
NO. 36	
NO. 37	
NO. 38	
NO. 39	
NO. 40	
NO. 41	
NO. 42	
NO. 43	
NO. 44	
NO. 45	
NO. 46	
NO. 47	
NO. 48	
NO. 49	
NO. 50	
NO. 51	
NO. 52	
NO. 53	
NO. 54	
NO. 55	
NO. 56	
NO. 57	
NO. 58	
NO. 59	
NO. 60	
NO. 61	
NO. 62	
NO. 63	
NO. 64	
NO. 65	
NO. 66	
NO. 67	
NO. 68	
NO. 69	
NO. 70	
NO. 71	
NO. 72	
NO. 73	
NO. 74	
NO. 75	
NO. 76	
NO. 77	
NO. 78	
NO. 79	
NO. 80	
NO. 81	
NO. 82	
NO. 83	
NO. 84	
NO. 85	
NO. 86	
NO. 87	
NO. 88	
NO. 89	
NO. 90	
NO. 91	
NO. 92	
NO. 93	
NO. 94	
NO. 95	
NO. 96	
NO. 97	
NO. 98	
NO. 99	
NO. 100	

FILE NAME	USER NAME - #USER#	DESIGNED NAV	REVISED	<b>STATE OF ILLINOIS DEPARTMENT OF TRANSPORTATION</b>	<b>DRAINAGE PLAN / PROFILE - SN 022-W046 STAGE 2</b>	F.A.P. RTE.	SECTION	COUNTY	TOTAL SHEETS	SHEET NO.
#FILE#		DRAWN KES	REVISED			338	2011-036-1	DUPAGE	234	72
PLOT SCALE - #SCALE#		CHECKED PJD	REVISED	SCALE: AS SHOWN SHEET NO. 2 OF 2 SHEETS STA. 3963+50 TO STA. 3972+50			CONTRACT NO. 60P42			
PLOT DATE - #DATE#		DATE 05-11-12	REVISED	FED. ROAD DIST. NO.			ILLINOIS FED. AID PROJECT			