

Bench Mark: Square "□" cut in west face of high tension tower base, east side of IL Rte 59  
Sta. 3905+18, 79' Rt., Elev. 696.82

Existing Structure: None

**DESIGN SPECIFICATIONS**  
2002 AASHTO Standard Specifications  
for Highway Bridges, 17th Edition

**DESIGN STRESSES**

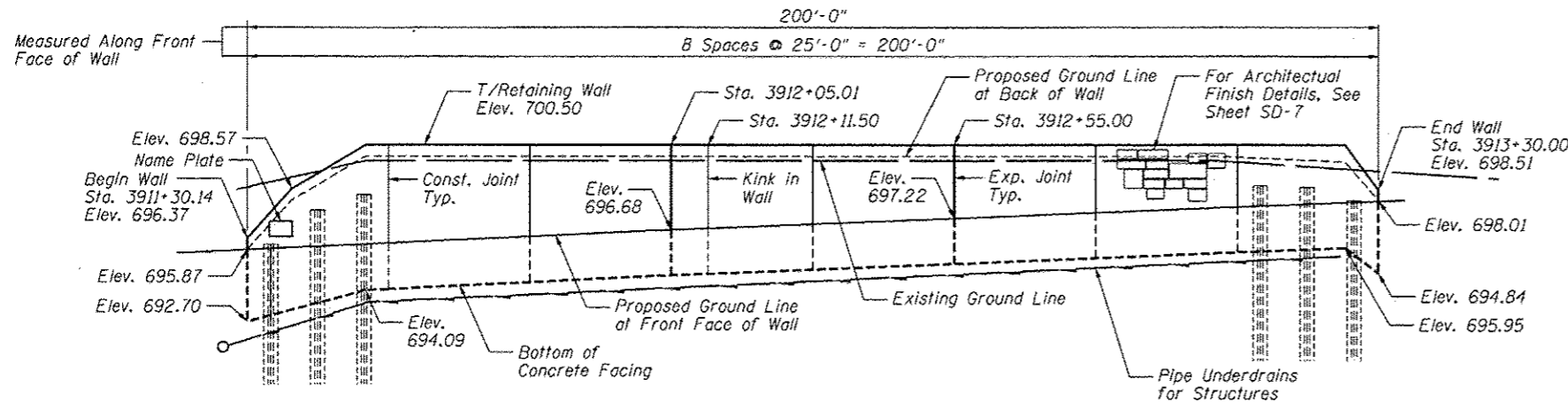
**FIELD UNITS**  
 $f'_c = 3,500$  psi  
 $f_y = 60,000$  psi (reinforcement)  
 $f_y = 36,000$  psi (M270 Grade 36)

**INDEX OF SHEETS**

- SD-1. General Plan and Elevation
- SD-2. Soldier Pile Layout
- SD-3. Typical Section
- SD-4. Details
- SD-5. Concrete Facing
- SD-6. Concrete Facing & Details
- SD-7. Architectural Finish Details
- SD-8. Boring Logs

**GENERAL NOTES**

1. Reinforcement bars designated (E) shall be epoxy coated.
2. The Contractor is responsible for the design and performance of the lagging using no less than 3" nominal rough-sawn thickness and timber with a minimum allowable bending stress of 1000 psi.
3. Protective coat shall be applied to exposed surfaces of the front face of wall and top of wall.



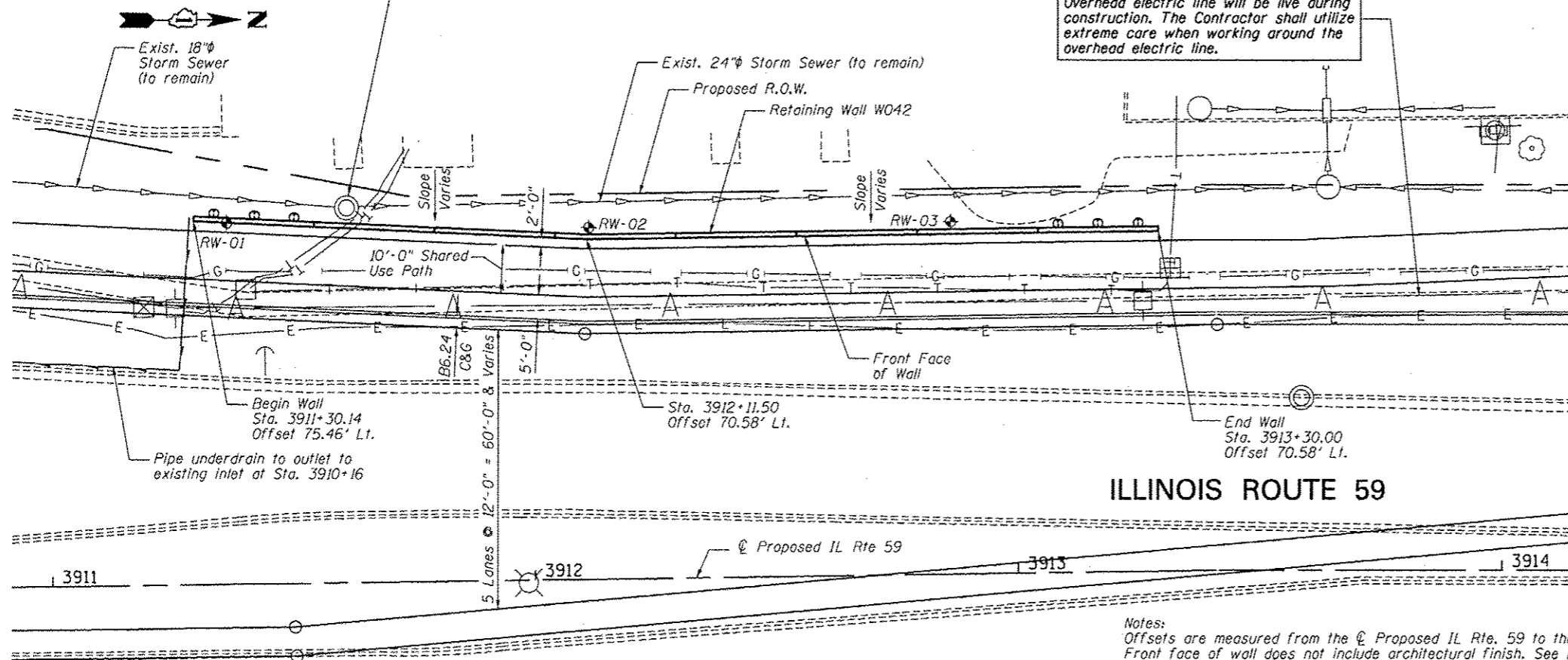
STATION 3911+30.14  
BUILT 201 BY  
STATE OF ILLINOIS  
F.A.P. RT. 338  
SEC. 2011-036-1  
STR. NO. 022-W042

**NAME PLATE**  
See Std. 515001

**ELEVATION**

Contractor to verify location of existing drainage structure to remain and determine if the proposed retaining wall can be constructed with the existing drainage structure in its current location. In the event the wall cannot be constructed with the existing drainage structure in its current location, the Contractor shall notify the Engineer and obtain the Engineer's approval to relocate the existing drainage structure. If approved by the Engineer, payment for the relocation of the existing drainage structure shall be in accordance with Article 109.04 of the Standard Specifications.

Overhead electric line will be live during construction. The Contractor shall utilize extreme care when working around the overhead electric line.



**PLAN**

Notes:  
Offsets are measured from the  $\phi$  Proposed IL Rte. 59 to the front face of the wall. Front face of wall does not include architectural finish. See Detail on Sheet SD-3.

Soldier piles not shown for clarity.

Roadway work will be in future Contract 60R30.

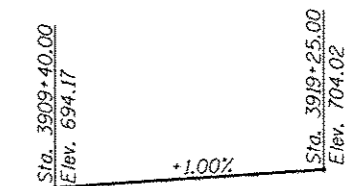
Buried utilities that cross SN 022-W042 will be relocated by others.

**TOTAL BILL OF MATERIAL**

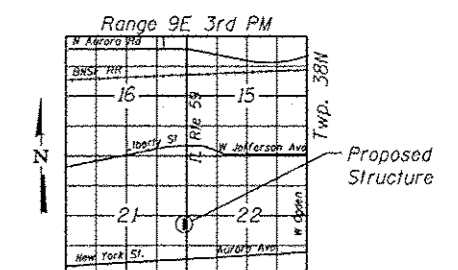
ITEM	UNIT	TOTAL
Structure Excavation	Cu. Yd.	226
Concrete Structures	Cu. Yd.	45.2
Protective Coat	Sq. Yd.	112
Stud Shear Connectors	Each	114
Reinforcement Bars, Epoxy Coated	Pound	5,190
Name Plates	Each	1
Geocomposite Wall Drain	Sq. Yd.	63
Untreated Timber Lagging	Sq. Ft.	743
Furnishing Soldier Piles (W Section)	Foot	480
Pipe Underdrains for Structures, 4"	Foot	343
Drilling and Setting Soldier Piles (In Soil)	Cu. Ft.	1,605
Form Liner Textured Surface	Sq. Ft.	339



Signature: *Deborah A. Zroka* Date: March 7, 2012  
November 30, 2012 Expires



**PROFILE GRADE**  
(along  $\phi$  proposed IL Route 59)



**LOCATION SKETCH**

**GENERAL PLAN AND ELEVATION**  
**IL RTE 59 FAP RTE 338**  
**SECTION 2011-036-1**  
**DUPAGE COUNTY**  
**STA. 3911+30.14 TO STA. 3913+30.00**  
**SN 022-W042**

**ZROKA** engineering  
Zroka Engineering, P.C.  
4216 North Hermitage  
Chicago, IL 60613

USER NAME = SAW  
DESIGNED - LAS  
CHECKED - DAZ  
DRAWN - SAW  
CHECKED - LAS  
PLOT SCALE = 3/8" = 1' IN.  
PLOT DATE = 5/11/2012

DESIGNED - LAS  
CHECKED - DAZ  
DRAWN - SAW  
CHECKED - LAS  
REVISED -  
REVISED -  
REVISED -  
REVISED -

STATE OF ILLINOIS  
DEPARTMENT OF TRANSPORTATION

GENERAL PLAN & ELEVATION  
STA. 3911+30.14 TO STA. 3913+30.00 SN 022-W042

SHEET NO. SD-1 OF SD-8 SHEETS

F.A.P. RTE.	SECTION	COUNTY	TOTAL SHEETS	SHEET NO.
338	2011-036-1	DUPAGE	234	88

CONTRACT NO. 60P42  
ILLINOIS FED. AID PROJECT