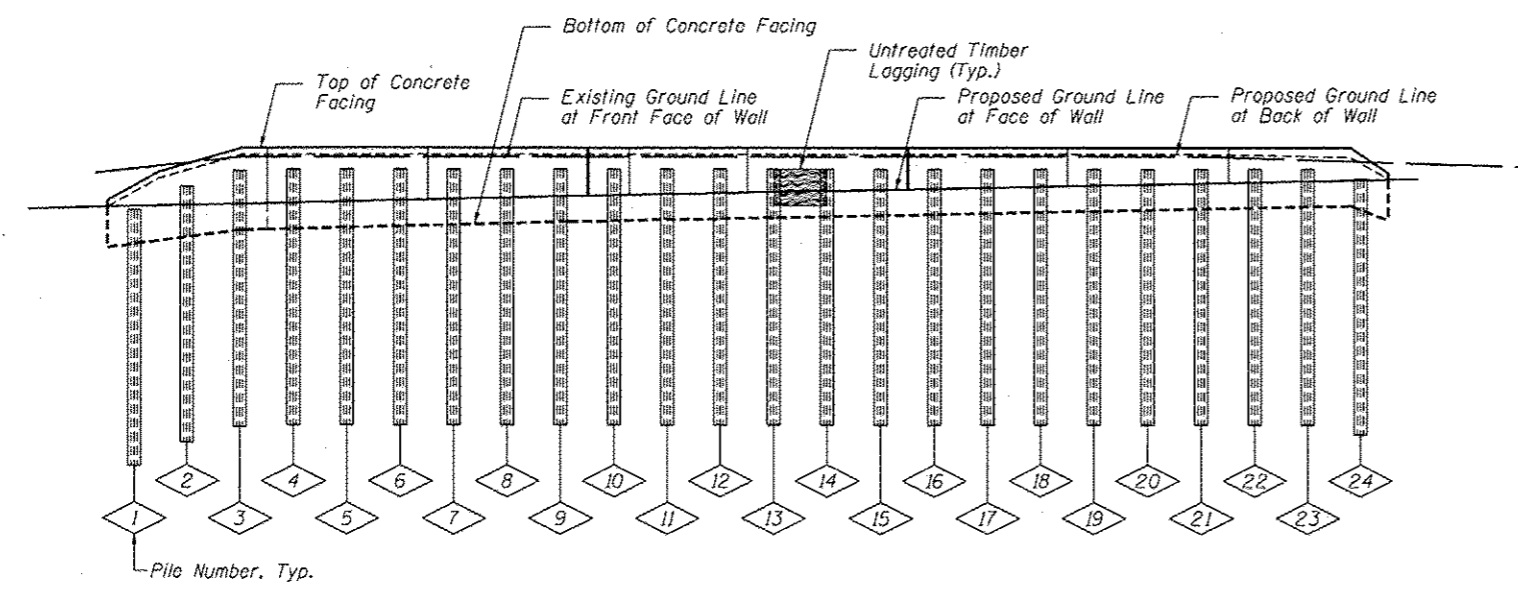


PLAN



ELEVATION

PILE SUMMARY

Pile No.	Station	Offset to C of Pile	Pile Designation	Length	Bottom Elevation	Top Elevation	Pile No.	Station	Offset to C of Pile	Pile Designation	Length	Bottom Elevation	Top Elevation
1	3911+34.41	76.94	W18x40	20'-0"	675.87	695.87	13	3912+34.17	72.32	W18x40	20'-0"	678.83	698.83
2	3911+42.72	76.44	W18x40	20'-0"	677.59	697.59	14	3912+42.50	72.32	W18x40	20'-0"	678.83	698.83
3	3911+51.04	75.95	W18x40	20'-0"	678.82	698.82	15	3912+50.83	72.32	W18x40	20'-0"	678.83	698.83
4	3911+59.36	75.45	W18x40	20'-0"	678.83	698.83	16	3912+59.17	72.32	W18x40	20'-0"	678.83	698.83
5	3911+67.68	74.95	W18x40	20'-0"	678.83	698.83	17	3912+67.50	72.32	W18x40	20'-0"	678.83	698.83
6	3911+76.00	74.45	W18x40	20'-0"	678.83	698.83	18	3912+75.83	72.32	W18x40	20'-0"	678.83	698.83
7	3911+84.32	73.95	W18x40	20'-0"	678.83	698.83	19	3912+84.17	72.32	W18x40	20'-0"	678.83	698.83
8	3911+92.63	73.45	W18x40	20'-0"	678.83	698.83	20	3912+92.50	72.32	W18x40	20'-0"	678.83	698.83
9	3912+00.95	72.95	W18x40	20'-0"	678.83	698.83	21	3913+00.83	72.32	W18x40	20'-0"	678.83	698.83
10	3912+09.27	72.45	W18x40	20'-0"	678.83	698.83	22	3913+09.17	72.32	W18x40	20'-0"	678.83	698.83
11	3912+17.50	72.32	W18x40	20'-0"	678.83	698.83	23	3913+17.50	72.32	W18x40	20'-0"	678.83	698.83
12	3912+25.83	72.32	W18x40	20'-0"	678.83	698.83	24	3913+25.83	72.32	W18x40	20'-0"	678.25	698.25

BILL OF MATERIAL

Item	Unit	Quantity
Furnishing Soldier Piles (W Section)	Foot	480
Drilling and Setting Soldier Piles (In Soil)	Cu Ft	1,605
Untreated Timber Lagging	Sq Ft	743
Stud Shear Connectors	Each	114

Note: All offsets are to the left of centerline of IL Rte 59

SOLDIER PILE LAYOUT
SN 022-W042

FILE NAME: ... \BSP-02-W042-022-PLAN.dwg



Zroka Engineering, P.C.
4216 North Hermitage
Chicago, IL 60613

USER NAME: SAW
DESIGNED: LAS
CHECKED: DAZ
DRAWN: SAW
PLOT DATE: 5/9/2012

DESIGNED: LAS
CHECKED: DAZ
DRAWN: SAW
CHECKED: LAS

REVISED: -
REVISED: -
REVISED: -
REVISED: -

STATE OF ILLINOIS
DEPARTMENT OF TRANSPORTATION

SOLDIER PILE LAYOUT
STA. 3911+30.14 TO STA. 3913+30.00 SN 022-W042

SHEET NO. SD-2 OF SD-8 SHEETS

F.A.P. RTE.	SECTION	COUNTY	TOTAL SHEETS	SHEET NO.
338	2011-036-1	DUPAGE	234	89

CONTRACT NO. 60P42
ILLINOIS FED. AID PROJECT