

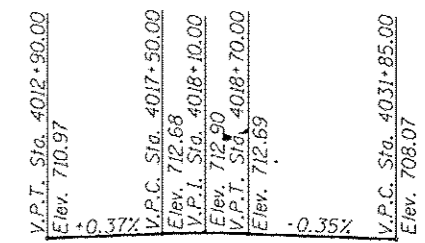
Bench Mark: Square "□" cut in west side of light pole base at northwest corner of Chase Bank located at southeast corner of IL Rte 59 and Brookdale Road, Sta. 4012+67.79' Right, Elev. 714.28

Existing Structure: None

INDEX OF SHEETS

- SE-1. General Plan & Elevation
- SE-2. General Plan & Elevation 2
- SE-3. Soldier Pile Layout 1
- SE-4. Soldier Pile Layout 2
- SE-5. Typical Section
- SE-6. Details
- SE-7. Concrete Facing 1
- SE-8. Concrete Facing 2
- SE-9. Concrete Facing 3
- SE-10. Concrete Facing & Details
- SE-11. Bicycle Railing
- SE-12. Architectural Finish Details
- SE-13. Boring Logs 1
- SE-14. Boring Logs 2

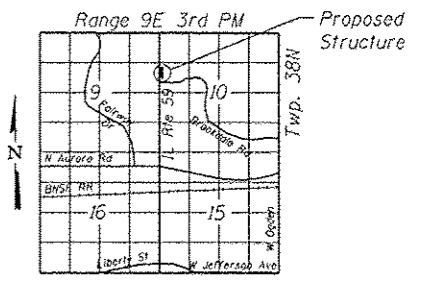
STATE OF ILLINOIS
 DEBORAH A. PRO...
 LICENSED STRUCTURAL ENGINEER
 081-005152
 Signature: *Deborah A. Pro...*
 Date: 7-11-12
 Expires: November 30, 2012



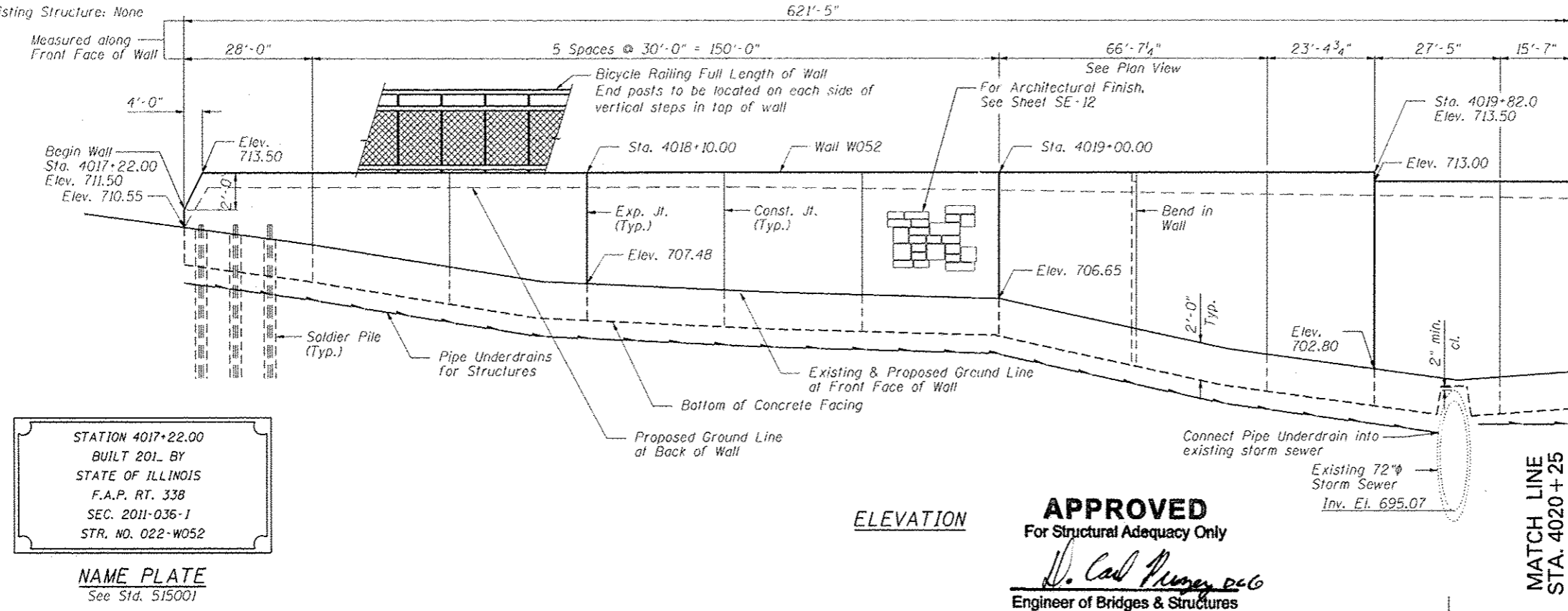
PROFILE GRADE
 (along inside edge of pavement, proposed IL Route 59)

DESIGN SPECIFICATIONS
 2002 AASHTO Standard Specifications for Highway Bridges, 17th Edition

DESIGN STRESSES
FIELD UNITS
 $f_c = 3,500$ psi
 $f_y = 60,000$ psi (reinforcement)
 $f_y = 36,000$ psi (M270 Grade 36)



GENERAL PLAN & ELEVATION
IL RTE 59 FAP RTE 338
SECTION 2011-036-1
DUPAGE COUNTY
STA. 4017+22.00 TO STA. 4023+28.14
SN 022-W052

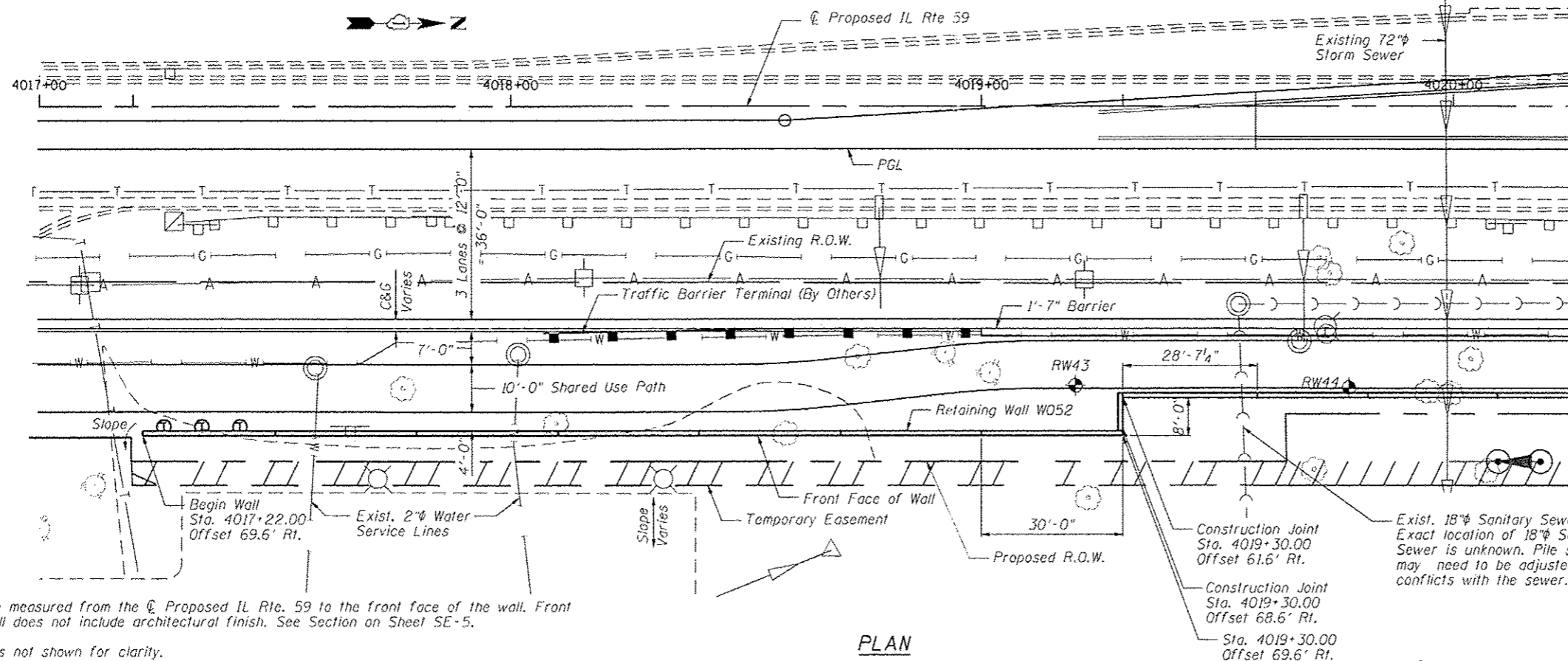


STATION 4017+22.00
 BUILT 201 BY
 STATE OF ILLINOIS
 F.A.P. RT. 338
 SEC. 2011-036-1
 STR. NO. 022-W052

NAME PLATE
 See Std. 515001

ELEVATION

APPROVED
 For Structural Adequacy Only
D. Carl P... P.E.
 Engineer of Bridges & Structures



Note:
 Offsets are measured from the ϕ Proposed IL Rte. 59 to the front face of the wall. Front face of wall does not include architectural finish. See Section on Sheet SE-5.

Soldier piles not shown for clarity.

Roadway work will be in future Contract 60R31.

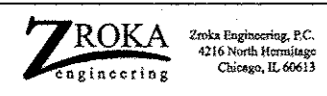
STATE OF ILLINOIS
DEPARTMENT OF TRANSPORTATION

Rev. 7-24-12

GENERAL PLAN & ELEVATION
STA. 4017+22.00 TO STA. 4023+28.14 SN 022-W052

| F.A.P. RTE. | SECTION | COUNTY | TOTAL SHEETS | SHEET NO. |
|--------------------|------------|--------|---------------------------|-----------|
| 338 | 2011-036-1 | DUPAGE | 234 | 111 |
| CONTRACT NO. 60P42 | | | ILLINOIS FED. AID PROJECT | |

FILE NAME: ...60P42-W052-021-CPE.dgn



| | | |
|----------------------------|----------------|-----------|
| USER NAME = SAW | DESIGNED - LAS | REVISIONS |
| DESIGNED - LAS | CHECKED - DAZ | REVISIONS |
| PLLOT SCALE = 38.00' / IN. | DRAWN - SAW | REVISIONS |
| PLLOT DATE = 7/10/2012 | CHECKED - LAS | REVISIONS |