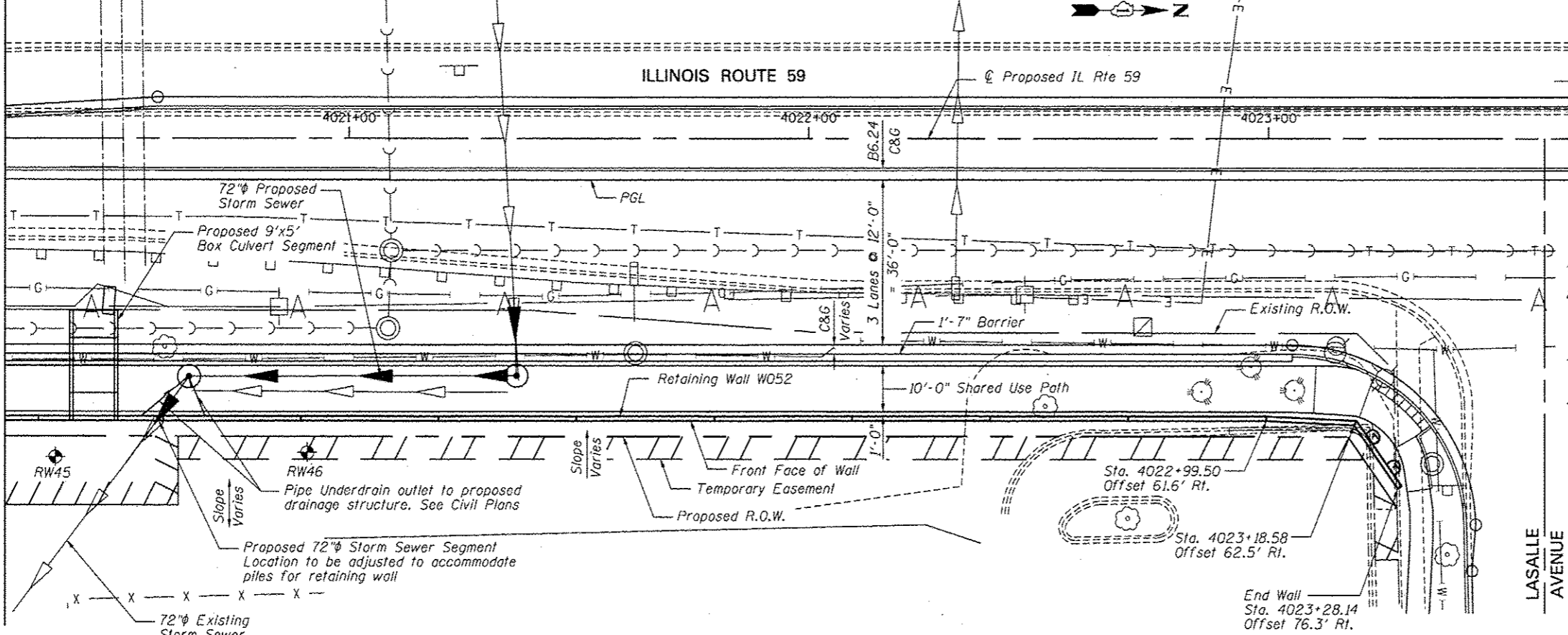


**TOTAL BILL OF MATERIAL**

ITEM	UNIT	TOTAL
Structure Excavation	Cu. Yd.	389
Concrete Structures	Cu. Yd.	214.1
Protective Coat	Sq. Yd.	181
Stud Shear Connectors	Each	507
Reinforcement Bars, Epoxy Coated	Pound	31,720
Bicycle Railing	Foot	622
Name Plates	Each	1
Geocomposite Wall Drain	Sq. Yd.	282
Untreated Timber Lagging	Sq. Ft.	3,221
Furnishing Soldier Piles (W Section)	Foot	2,155
Pipe Underdrains for Structures, 4"	Foot	645
Drilling and Setting Soldier Piles (In Soil)	Cu. Ft.	12,205
Form Liner Textured Surface	Sq. Ft.	4,505



- GENERAL NOTES**
1. Reinforcement bars designated (E) shall be epoxy coated.
  2. The Contractor is responsible for the design and performance of the lagging using no less than 3" nominal rough-sawn thickness and timber with a minimum allowable bending stress of 1000 psi.
  3. Protective coat shall be applied to exposed surfaces of the back face and top of wall.
  4. Calculated length of Furnishing Soldier Piles (W Section) = 1,368 Feet (W18x86), 403 Feet (W33x141), and 384 Feet (W36x160)

Note:  
Offsets are measured from the Proposed IL Rte. 59 to the front face of the wall. Front face of wall does not include architectural finish. See Section on Sheet SE-5.

Soldier piles not shown for clarity.

Roadway work will be in future Contract 60R31.

**PLAN**

**GENERAL PLAN & ELEVATION 2  
SN 022-W052**



USER NAME - SAW	DESIGNED - LAS	REVISIONS -
PLOT SCALE - 30.00' / IN.	CHECKED - DAZ	REVISIONS -
PLOT DATE - 5/4/2012	DRAWN - SAW	REVISIONS -
	CHECKED - LAS	REVISIONS -

**STATE OF ILLINOIS  
DEPARTMENT OF TRANSPORTATION**

**GENERAL PLAN & ELEVATION 2  
STA. 4017 + 22.00 TO STA. 4023 + 28.14 SN 022-W052**

SHEET NO. SE-2 OF SE-14 SHEETS

F.A.P. RTE.	SECTION	COUNTY	TOTAL SHEETS	SHEET NO.
338	2011-036-1	DUPAGE	234	112
CONTRACT NO. 60P42				
ILLINOIS FED. AID PROJECT				