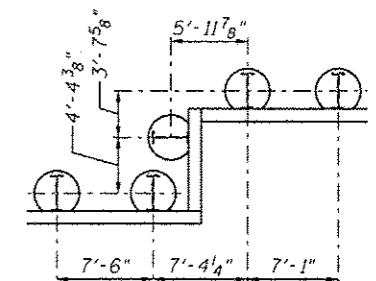


DEVELOPED ELEVATION

PILE SUMMARY

Pile No.	Station	Offset to C. of Pile	Pile Designation	Length	Bottom Elevation	Top Elevation	Pile No.	Station	Offset to C. of Pile	Pile Designation	Length	Bottom Elevation	Top Elevation	Pile No.	Station	Offset to C. of Pile	Pile Designation	Length	Bottom Elevation	Top Elevation
1	4017+25.75	67.84	W18x86	24'-0"	686.75	710.75	18	4018+51.25	67.84	W18x86	24'-0"	686.75	710.75	35	4019+67.44	59.21	W33x141	31'-0"	679.75	710.75
2	4017+32.25	67.84	W18x86	24'-0"	686.75	710.75	19	4018+58.75	67.84	W18x86	24'-0"	686.75	710.75	36	4019+73.27	59.21	W33x141	31'-0"	679.75	710.75
3	4017+38.75	67.84	W18x86	24'-0"	686.75	710.75	20	4018+66.25	67.84	W18x86	24'-0"	686.75	710.75	37	4019+79.11	59.21	W33x141	31'-0"	679.75	710.75
4	4017+46.25	67.84	W18x86	24'-0"	686.75	710.75	21	4018+73.75	67.84	W18x86	24'-0"	686.75	710.75	38	4019+85.75	59.10	W36x160	32'-0"	678.25	710.25
5	4017+53.75	67.84	W18x86	24'-0"	686.75	710.75	22	4018+81.25	67.84	W18x86	24'-0"	686.75	710.75	39	4019+92.67	59.10	W36x160	32'-0"	678.25	710.25
6	4017+61.25	67.84	W18x86	24'-0"	686.75	710.75	23	4018+88.75	67.84	W18x86	24'-0"	686.75	710.75	40	4020+05.67	59.10	W36x160	32'-0"	678.25	710.25
7	4017+68.75	67.84	W18x86	24'-0"	686.75	710.75	24	4018+96.25	67.84	W18x86	24'-0"	686.75	710.75	41	4020+12.25	59.10	W36x160	32'-0"	678.25	710.25
8	4017+76.25	67.84	W18x86	24'-0"	686.75	710.75	25	4019+03.75	67.22	W33x141	31'-0"	679.75	710.75	42	4020+18.00	59.10	W36x160	32'-0"	678.25	710.25
9	4017+83.75	67.84	W18x86	24'-0"	686.75	710.75	26	4019+11.25	67.22	W33x141	31'-0"	679.75	710.75	43	4020+23.75	59.10	W36x160	32'-0"	678.25	710.25
10	4017+91.25	67.84	W18x86	24'-0"	686.75	710.75	27	4019+18.75	67.22	W33x141	31'-0"	679.75	710.75	44	4020+29.50	59.10	W36x160	32'-0"	678.25	710.25
11	4017+98.75	67.84	W18x86	24'-0"	686.75	710.75	28	4019+26.25	67.22	W33x141	31'-0"	679.75	710.75	45	4020+36.08	59.10	W36x160	32'-0"	678.25	710.25
12	4018+06.25	67.84	W18x86	24'-0"	686.75	710.75	29	4019+27.62	62.85	W33x141	31'-0"	679.75	710.75	46	4020+52.58	59.10	W36x160	32'-0"	678.25	710.25
13	4018+13.75	67.84	W18x86	24'-0"	686.75	710.75	30	4019+33.61	59.21	W33x141	31'-0"	679.75	710.75	47	4020+69.08	59.10	W36x160	32'-0"	678.25	710.25
14	4018+21.25	67.84	W18x86	24'-0"	686.75	710.75	31	4019+40.69	59.21	W33x141	31'-0"	679.75	710.75	48	4020+77.42	59.10	W36x160	32'-0"	678.25	710.25
15	4018+28.75	67.84	W18x86	24'-0"	686.75	710.75	32	4019+47.77	59.21	W33x141	31'-0"	679.75	710.75	49	4020+85.75	59.10	W36x160	32'-0"	678.25	710.25
16	4018+36.25	67.84	W18x86	24'-0"	686.75	710.75	33	4019+54.86	59.21	W33x141	31'-0"	679.75	710.75							
17	4018+43.75	67.84	W18x86	24'-0"	686.75	710.75	34	4019+61.61	59.21	W33x141	31'-0"	679.75	710.75							



DETAIL 1

- Notes:
- All offsets are to the right of C. of IL Rte. 59
  - The distance from Pile 28 to Pile 29 along the front face of wall is 10'-6".  
The distance from Pile 29 to Pile 30 along the front face of wall is 4'-10 1/4".
  - See Sheet SE-4 for Bill of Material.

SOLDIER PILE LAYOUT 1  
SN 022-W052