

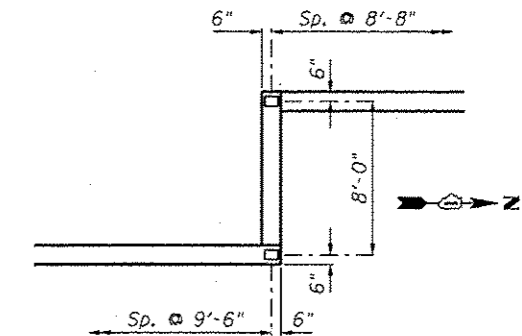
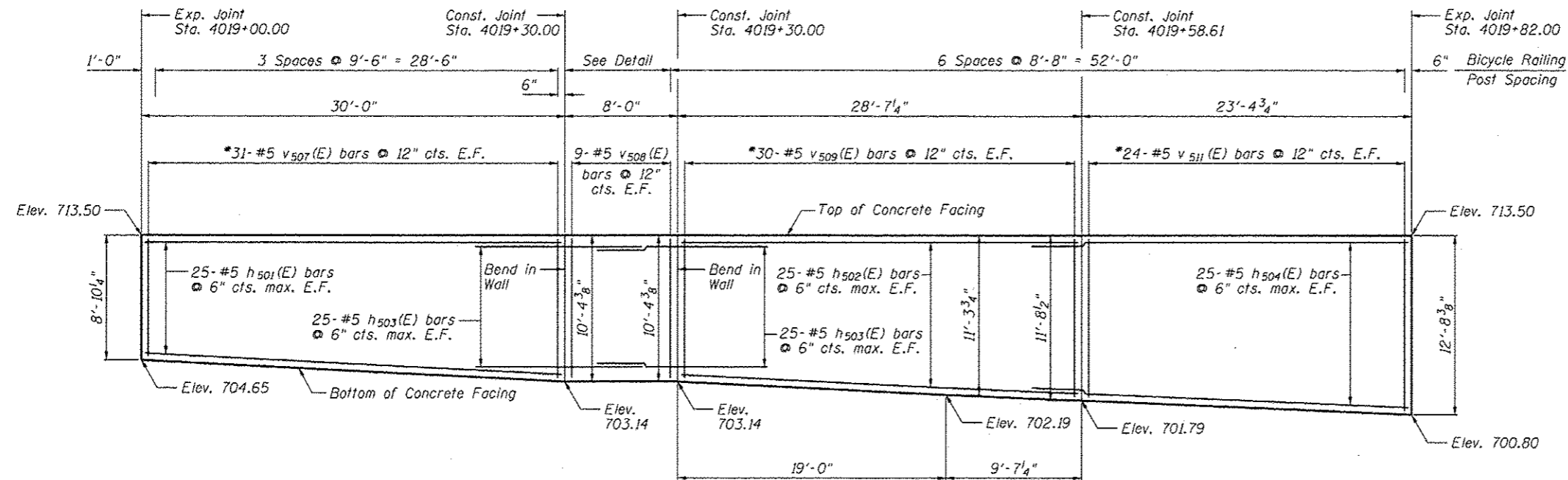
Notes:

Minimum lap for #5 bar is 3'-8". Minimum lap for #6 bar is 4'-5".

Space reinforcement in wall to miss shear studs.

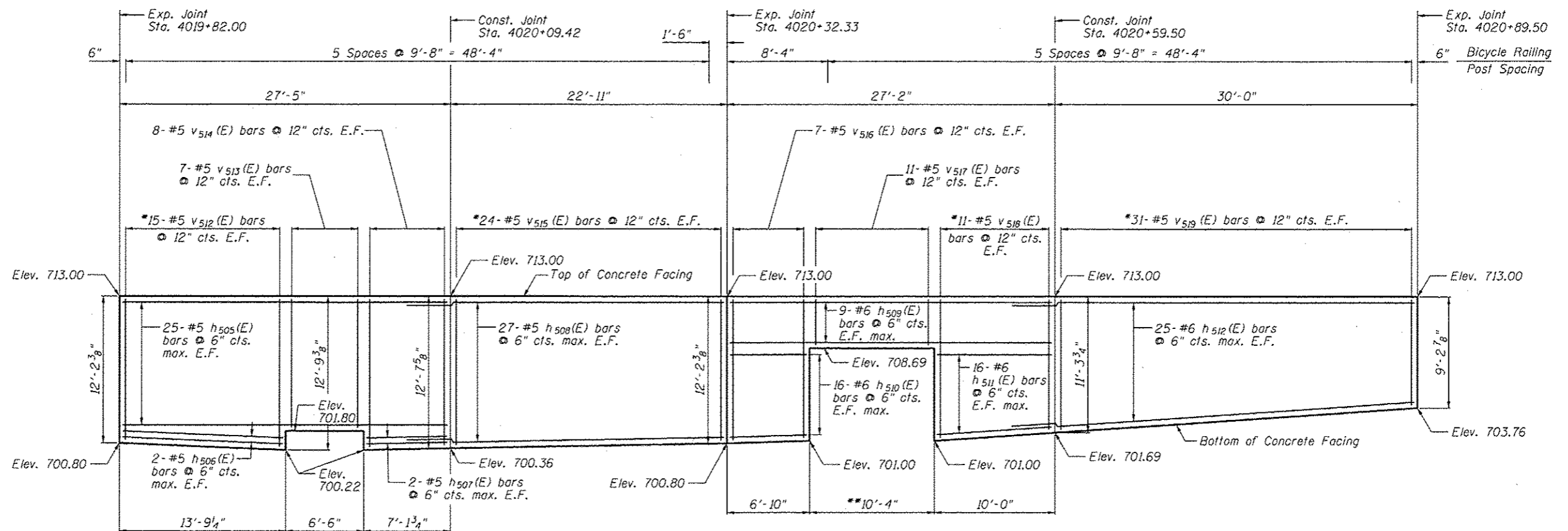
\* signifies cut bar. Order per length on Bill of Material. Cut as shown in Cutting Diagram and use half of bars in each face.

See Sheet SE-10 for Concrete Facing Details and Bill of Material.



POST SPACING @  
CORNER DETAIL

ELEVATION



\*\*Outside box culvert dimension plus 1/2" P.J.F. each side

ELEVATION

CONCRETE FACING 2  
SN 022-W052

FILE NAME: ...16092-022-W052-ConcreteFacing2.dgn

**ZROKA** engineering  
Zroka Engineering, P.C.  
4216 North Hermitage  
Chicago, IL 60613

USER NAME = SAW  
PLOT SCALE = 18.0000' / IN.  
PLOT DATE = 5/4/2012

DESIGNED - LAS  
CHECKED - DAZ  
DRAWN - SAW  
CHECKED - LAS

REVISED -  
REVISED -  
REVISED -  
REVISED -

STATE OF ILLINOIS  
DEPARTMENT OF TRANSPORTATION

CONCRETE FACING 2  
STA. 4017+22.00 TO STA. 4023+28.14 SN 022-W052

SHEET NO. SE-8 OF SE-14 SHEETS

F.A.P. RTE.	SECTION	COUNTY	TOTAL SHEETS	SHEET NO.
338	2011-036-1		234	118
CONTRACT NO. 60P42			ILLINOIS FED. AID PROJECT	