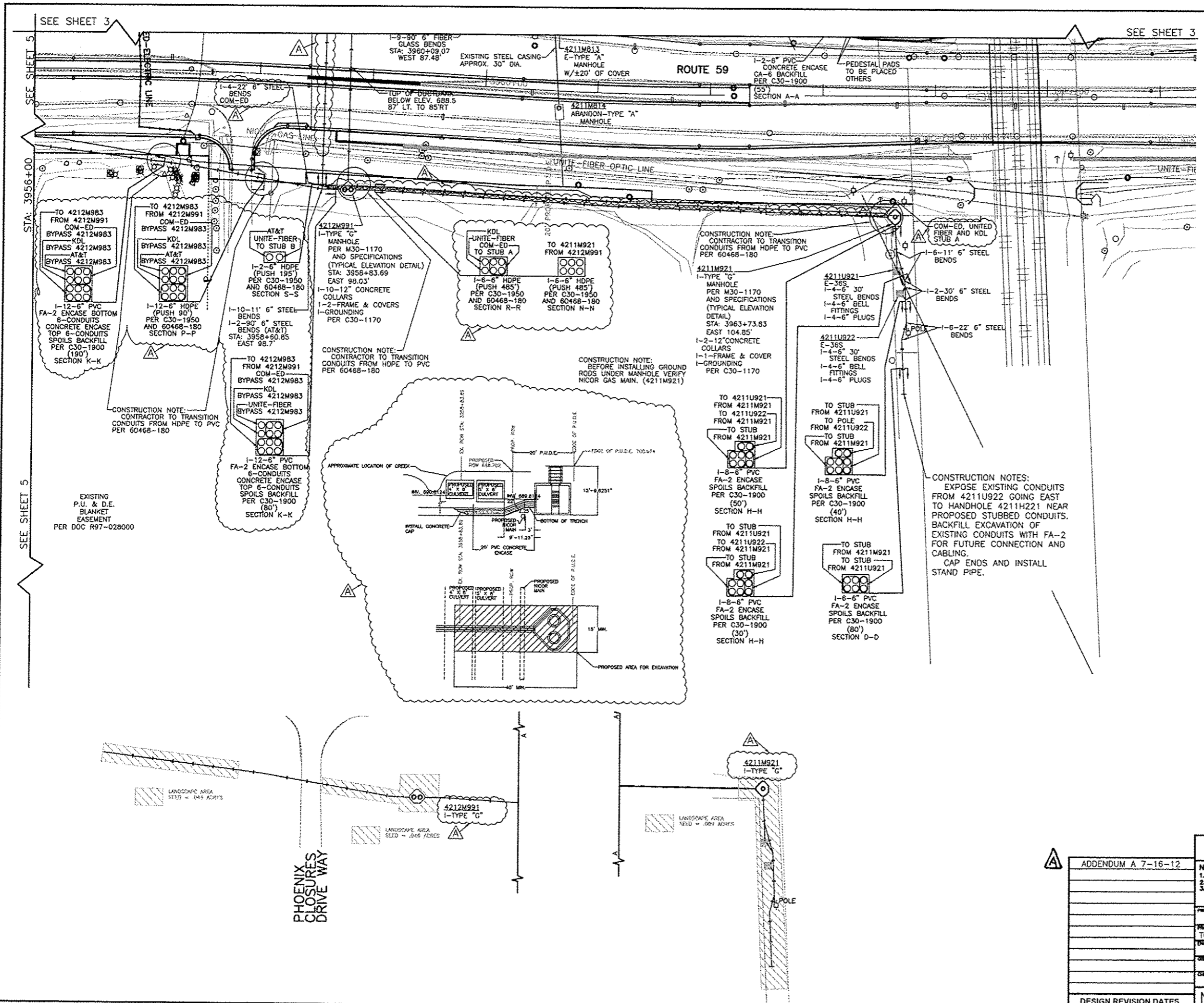
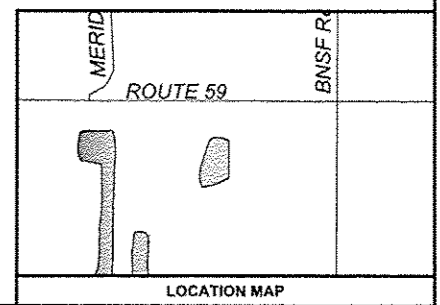


F.A. RTE. 338/IL 59	SECTION 2011-036	COUNTY DUPAGE	TOTAL SHEETS 0	SHEET NO. 3
STA. TO STA.		ILLINOIS CONTRACT 60P42		



LEGEND

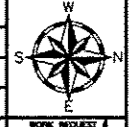
- EXISTING UNDERGROUND**
- E-SW. VAULT
 - E-SW. MOD.
 - E-TRANSFORMER
 - E-TYPE "A" MANHOLE
 - E-TYPE "C" MANHOLE
 - E-TYPE "C" DOUBLE OPENING MANHOLE
 - E-TYPE "D" MANHOLE
 - E-TYPE "E" MANHOLE
 - E-CONDUIT
- OVERHEAD**
- E-DISTRIBUTION/TRANSMISSION POLE
- INSTALL UNDERGROUND**
- I-SW. VAULT
 - I-TRANSFORMER VAULT
 - I-TYPE "A" MANHOLE
 - I-TYPE "E" DOUBLE OPENING MANHOLE
 - I-TYPE "G" DOUBLE OPENING MANHOLE
 - I-TYPE "G" SINGLE OPENING MANHOLE
 - I-CONDUIT
- ABANDON UNDERGROUND**
- A-CONDUIT



CALL JULIE 48 HRS. PRIOR TO CONSTRUCTION
1-800-892-0123 OR CALL 811

- NOTES:**
1. THE PROJECT ENGINEER FOR THIS JOB IS BRIAN CHAMBERLAIN AT (630)420-8853.
 2. THE PROJECT COORDINATOR FOR THIS PROJECT IS PAUL MICHALOWSKI AT (630)305-5227.
 3. CONTRACTOR IS RESPONSIBLE FOR MANHOLE PHOTOS TAKEN OF ALL CLEARLY MARKED CABLE AND ALL WALLS OF MANHOLES. PHOTOS WILL BE GIVEN TO THE GIS GROUP WITH THE AS-BUILTS.

PROJECT TITLE: ROUTE 59 ROAD IMPROVEMENTS			
PROJECT DESCRIPTION: TO RELOCATE AND INSTALL NEW DUCTBANK AND 34KV FEEDERS			
ENGINEER: BCC	DRAWING DATE: 5-11-12	APP # 4211,4212,4223	SCALE: 1" = 40'
DESIGN BY: DL	DESIGNED BY: PSM	DATE: N/A	PROJECT # EU-12
CHECKED BY:	APPROVED BY:	DATE: 0606468001C4.DWG	SHEET # 4 OF 63



DESIGN REVISION DATES: Naperville Department of Public Utilities Electric Division WORK NUMBER: 60468