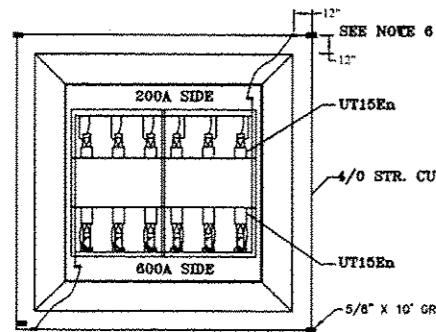


F.A.P. RTE.	SECTION	COUNTY	TOTAL SHEETS	SHEET NO.
338/IL 59	2011-035-1	DUPAGE		
FED.ROAD.DIST.NO.			ILLINOIS	
			CONTRACT 60P42	
			FED. AID PROJECT	



NOTES (CONTINUED):

- 8) THIS DRAWING SHOWS AN EXISTING SWITCH GEAR WITH CABLE INSTALLED WITH MATERIAL LIST ON RIGHT.
- 9) CONTRACTOR TO OBTAIN OUTSIDE OF SWITCH GEAR PRIOR TO DOING ANY WORK.
- 10) CONTRACTOR TO INSTALL 3", 5" AND 6" CONDUIT INTO EXISTING AS SPECIFIED IN SPECIFICATIONS GAP AND PLUGS ALL CONDUITS.
- 11) ALL GROUNDING CONNECTIONS AND TERMINATORS SHALL BE INSPECTED TO DETERMINE CONDITION OF CONNECTIONS BY THE CONTRACTOR BEFORE FINDING.

DEVA: VAULT, AIR SWITCH

Item Code	Description 1	Description 2	Qty
224 101 00120	EXTENDER, 12\"/>		

DnBxxP: BEND, PVC

Item Code	Description 1	Description 2	Qty
DnBxxP 225 101 00155	ELBOW 90° R 3\"/>		

D3BxxS: BEND, 3\"/>

D5BxxS: BEND, 5\"/>

D6BxxS: BEND, 6\"/>

DnF: BELL FITTING, PVC

Item Code	Description 1	Description 2	Qty
DnF 125 105 00040	BELL FITTING, PVC 5\"/>		

DnP: PLUG, PVC

Item Code	Description 1	Description 2	Qty
DnP 125 105 00250	PLUG, PVC 3\"/>		

UFASMU: FUSE UNIT, 15KV, SMU20

Item Code	Description 1	Description 2	Qty
UFASMU 125 105 00000	FUSE UNIT, SMU20, 15KV		200

UGS: GROUNDING, SWITCHGEAR

Item Code	Description 1	Description 2	Qty
UGS 220 107 00070	CU BARS, SD	4/0 7-STR	70

U115i: FAULTED CIRCUIT INDICATOR

Item Code	Description 1	Description 2	Qty
U115i 125 105 00010	CU BARS, SD	4/0 7-STR	70

UM6S*A: SWITCH, PAD MOUNTED

Item Code	Description 1	Description 2	Qty
UM6S*A 125 105 00050	SPR 2-WAY AUTOMATED SWITCH	15KV 600A	1

UT15AR: RUSHING INSERT, 15KV 200

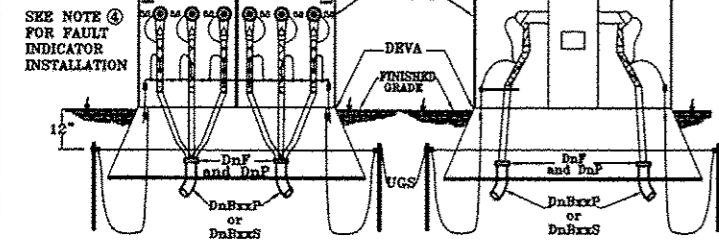
Item Code	Description 1	Description 2	Qty
UT15AR 125 117 00040	INSERT, LOADBREAK RUSHING	15KV, 200A	1

UT15AE: ARRESTER, ELBOW, 9KV

Item Code	Description 1	Description 2	Qty
UT15AE 125 118 00030	ARRESTER, ELBOW	9/10 KV	1

UT15E: ELBOW, 15KV

Item Code	Description 1	Description 2	Qty
UT15E 125 117 00010	FUSE, REPORT RAY	90A	1



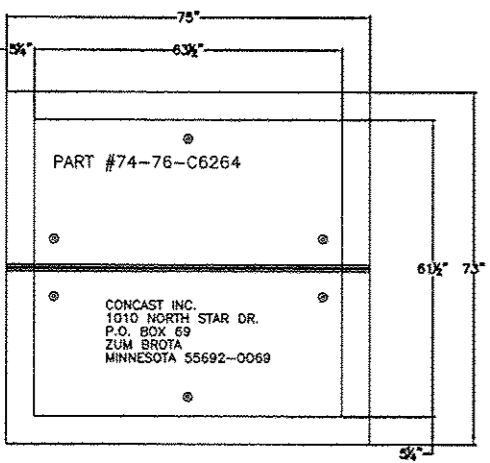
ASSEMBLY CODES

CODE	QTY	DESCRIPTION
DEVA	1	Vault, Air Switch
DnBxxP	**	Bend, PVC
DnBxxS	**	Bend, Steel
DnP	**	Plug, PVC
DnF	**	Bell Fitting, PVC
UFASMU	**	Fuse Unit, 15KV, SMU 20
UM6S*A	1	Switch, Pad mounted
UGS#	1	Grounding, Switchgear
UT15AE	**	Arrester, Elbow, 9KV
UT15E	**	Elbow, 15KV

- NOTES:**
- BENDS SHALL BE INSTALLED PER FIELD CONDITION.
 - SPARES NOT SHOWN.
 - INSTALL ELBOW ARRESTERS AT NORMAL OPEN SWITCH LOCATIONS ON 600A SIDE.
 - SEE C30-1010 FOR FAULT INDICATOR LOCATION.
 - FOR VAULT INSTALLATIONS ONLY, INSTALL LIDS - DEVAL.
 - GROUND GRID INSTALLED 12" FROM VAULT AND 12" BELOW GRADE.
 - CONTRACTOR IS ADVISED THIS SPECIFICATION INDICATES WHAT IS INSIDE AN EXISTING ENERGIZED SWITCH GEAR THAT IS TO BE WORKED IN BY THE CONTRACTOR.
- THE ASSEMBLY CODE U15AR - BUSHING INSERT, 15KV 200 Amps WAS ELIMINATED AFTER SAC ADDED THE BUSHING INSERT OPTION TO ALL NEW PME SWITCHGEAR! THE U15AR OPTION IS STILL AVAILABLE FOR USE AS A REPLACEMENT OPTION.

NAPERVILLE PUBLIC UTILITIES DEPARTMENT
ELECTRIC STANDARDS
3Ø 15KV AIR SWITCH MODULE ASSEMBLY
DATE 4-22-07
Page 1 of 3
C30-0013

NAPERVILLE PUBLIC UTILITIES DEPARTMENT
ELECTRIC STANDARDS
3Ø 15KV AIR SWITCH MODULE ASSEMBLY
DATE 10-22-00
Page 2 of 3
C30-0013



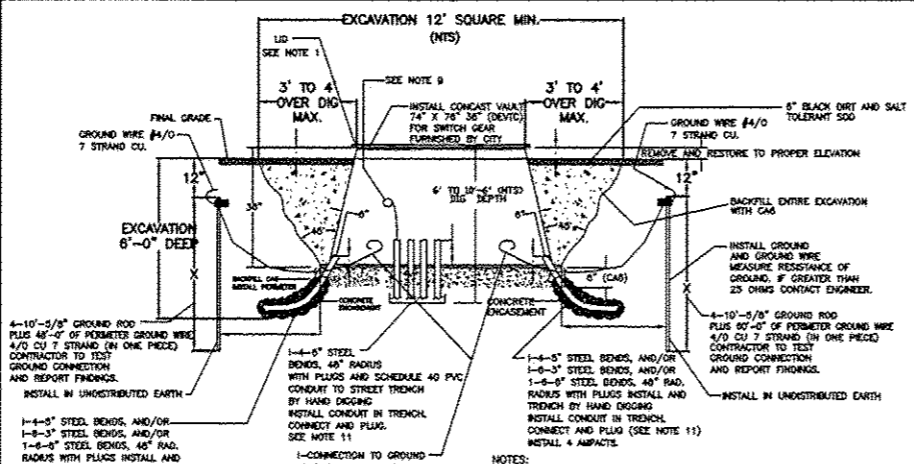
MATERIAL: FIBERCRETE (REQUIRED - 10)

NOTE:

- INSTALL THIS COVER OVER SWITCH GEAR VAULT UNTIL SWITCH IS INSTALLED.
- RETURN COVER TO CITY OF NAPERVILLE'S STOCK ROOM.
- CONTRACTOR TO FURNISH LID.

CONTRACTOR TO ORDER FROM ELECTRO TECH
ATTN: JAMES FLEMING
1478 McCORMICK PLACE
WHEATON, IL 60187
PHONE: 1-800-544-4285

NAPERVILLE PUBLIC UTILITIES DEPARTMENT
ELECTRIC STANDARDS
SWITCH GEAR VAULT COVER (60 LBS.)
(CONSTRUCTION SPECIFICATION)
DATE 02-01-06
Page 1 of 1
60466-110

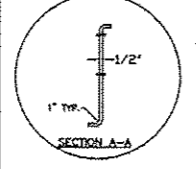


EXCAVATION 12" SQUARE MIN. (NTS)

3' to 4' OVER DIG MAX.

INSTALL CONCRETE VAULT 74" x 76" (DEVAL) FOR SWITCH GEAR FURNISHED BY CITY.

6" TO 10" (NTS) 8\"/>



- NOTES:**
- INSTALL LID OVER OPENING FURNISHED BY CONTRACTOR.
 - ESTIMATED WEIGHT - 700 LBS TO 800 LBS.
 - VAULT MATERIAL - FIBERCRETE FORMED.
 - INSTALL TOP OF VAULT 6" ABOVE FINAL GRADE.
 - INSTALL GALVANIZED STEEL ELBOWS INTO VAULT.
- CONTACT CITY ELECTRICAL ENGINEER FOR LOCATION OF THE ELBOWS IN THE VAULT AND ORIENTATION OF VAULT.**
- INSTALL 4-5/8" DIA. x 10'-0" LONG GROUND RODS FOR EACH VAULT. LOCATE ONE ROD AT EACH OF THE CORNERS. INSTALL 1 FOOT FROM THE CORNER. GROUND ROD TO BE DRIVEN 12" BELOW FINISHED GRADE.
 - INSTALL PERIMETER GROUND WIRE #4/0, 7 STRANDS COPPER AND ATTACH TO 4 RODS. (ONE CONTINUOUS PIECE, APPROXIMATELY 50' OF WIRE)
 - ALL MATERIALS INSTALLED SHALL BE FURNISHED BY CITY OF NAPERVILLE OR CONTRACTOR AS NEW AT EACH LOCATION USED MATERIALS ARE NOT ACCEPTABLE
 - INSTALL WIRE TAP OR #12 COPPER WIRE THIN INTO VAULT AND THE OFF TO LID AND LEAVE TAIL TO CONNECT TOO.
 - TEST GROUNDS TO 25 OHMS (REPORT FINDINGS).
 - BENDS SHALL BE INSTALLED PER FIELD CONDITIONS USE 11", 22", 30", 45" AND 90° STEEL BENDS.
 - CONTACT ON SITE INSPECTOR FOR ORIENTATION ONLY.
 - TESTING EQUIPMENT BY CONTRACTOR.
 - TESTING RESULTS TO BE GIVEN TO THE CITY IN WRITTEN FORM.
 - VAULT, GROUND MATERIALS, PLASTIC AND STEEL BENDS AND GROUND WIRE FURNISHED BY CITY, INSTALLED BY CONTRACTOR.
 - CUT VAULT TO INSTALL CONDUIT AS REQUIRED.
 - SEE SPEC. C30-8332 FOR VAULT EXTENDER.

NAPERVILLE PUBLIC UTILITIES DEPARTMENT
ELECTRIC STANDARDS
INSTALL NEW SWITCH GEAR VAULT
DATE 02-01-06
Page 1 of 1
60466-120

PROJECT TITLE ROUTE 59 ROAD IMPROVEMENTS

PROJECT DESCRIPTION DETAILS AND STANDARDS

DRAWING DATE 5-11-12

SCALE N.T.S.

OWNER BCC

DRAWING NO. 4211,4212,4223

DESIGN BY DL

CHECKED BY PSM

DATE 5-11-12

REVISIONS DATE

DATE 5-11-12

BY PSM

CAD FILE 0060648001D19.DWG

PROJECT # EU-12

SHEET # 19 OF 63

WORK REQUEST # 60468

Department of Public Utilities
Electric Division

CONTRACT 60P42 SHEET 151 OF 234