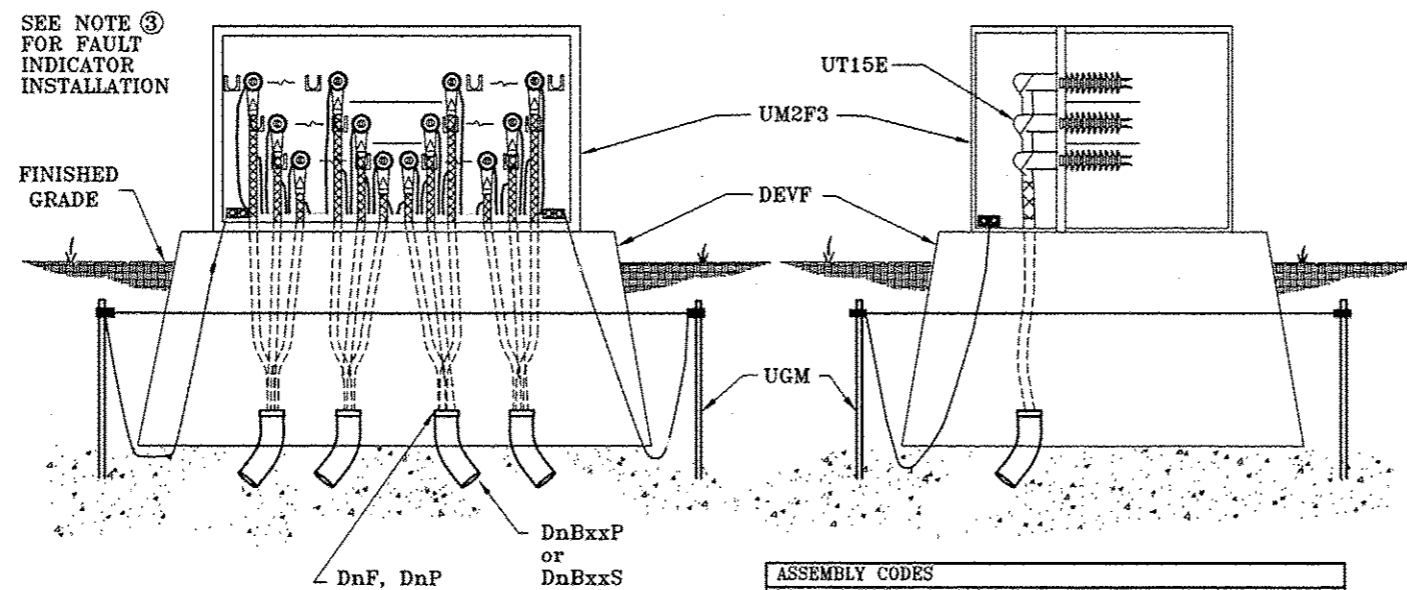
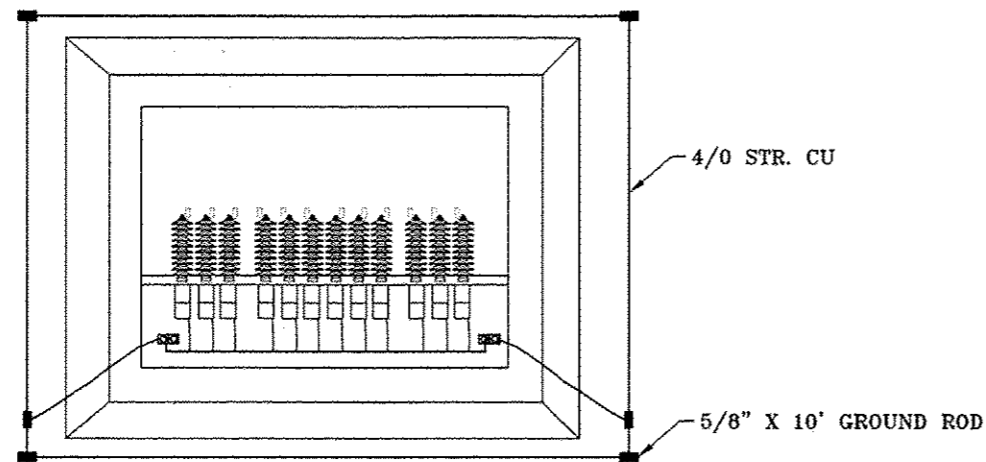


F.A.P. RTE.	SECTION	COUNTY	TOTAL SHEETS	SHEET NO.
338/IL 59	2011-035-1	DUPAGE		
			CONTRACT 60P42	
FED.ROAD.DIST.NO.	ILLINOIS	FED. AID PROJECT		



- NOTE:**
1. BENDS SHALL BE INSTALLED PER FIELD CONDITION.
 2. SPARES NOT SHOWN.
 3. SEE C30-1010 FOR FAULT INDICATOR LOCATION.

ASSEMBLY CODES		
CODE	QTY	DESCRIPTION
DEVF	1	Vault, 3 ϕ Fuse Module
DnBxxP	**	Bend, PVC
DnBxxS	**	Bend, Steel
DnF	**	Bell Fitting, PVC
DnP	**	Plug, PVC
UGM	1	Grounding, Fuse/Termination Module
UT15e	1	Faulted Circuit Indicator
UM2F3	1	3 ϕ Fuse Module
UT15En	**	Elbow, 15kV

** quantity is dependent on application
n is dependent on size
xx bend angle dependent on field condition (typically 45°)

NAPERVILLE PUBLIC UTILITIES DEPARTMENT	3ϕ FUSE/TERMINATION MODULE ASSEMBLY	DATE: 04-17-08
ELECTRIC STANDARDS		Page 1 of 3 C30-0014

PROJECT TITLE				ROUTE 59 ROAD IMPROVEMENTS			
PROJECT DESCRIPTION				DETAILS AND STANDARDS			
ENGINEER	DRAFTING DATE	MAP #	SCALE				
BCC	5-11-12	4211,4212,4223	N.T.S.				
DESIGN BY	DRAFTED BY	REVISIONS DATE	AT&T JOINT AGREEMENT #	PROJECT #			
DL	PSM		N/A	EU-12			
CHECKED BY	APPROVED BY	CAD FILE	SHEET #				
		00606480010120.DWG	20 OF 63				
Naperville			Department of Public Utilities Electric Division			WORK REQUEST #	
						60468	