

F.A.P. RTE.	SECTION	COUNTY	TOTAL SHEETS	SHEET NO.
338/IL 59	2011-035-1	DUPAGE		
FED.ROAD.DIST.NO.		ILLINOIS	CONTRACT 60P42	
		FED. AID PROJECT		

CONDUIT ENTRANCE INTO MANHOLE/HANDHOLE

APPLICABLE TO SWITCHGEAR AND TRANSFORMER VAULTS

GENERAL
CONDUIT ENTRANCES INTO MANHOLES/HANDHOLES SHALL NORMALLY BE MADE WITH PLASTIC ENTRANCE BELLS PER FIGURE 1 OR 2. THE ENTRANCE CONDUIT SHALL BE PLASTIC OR STEEL ENCASED IN CONCRETE AS PER FIGURE 1 AND 2 BELOW, SPECIFIED BY THE ENGINEER ON THE CONSTRUCTION DRAWINGS.

POCKETS
DUCT POCKETS SHALL BE PROVIDED IN WALLS WHERE SPECIFIED ON CONSTRUCTION DRAWINGS. POCKET NOT REQUIRED ON NEWER STYLE MANHOLE DESIGNS (FIGURE 2). TYPICAL POCKET DIMENSIONS ARE INDICATED BELOW ON FIGURE 1.

CONDUIT SPACING
CONDUIT SHALL NORMALLY BE SUPPORTED BY VERTICAL AND HORIZONTALLY INTERLOCKED PLASTIC SPACERS TO PROVIDE ALIGNMENT WITH PLASTIC ENTRANCE BELL UNITS AT 8 1/4 IN. SPACING.

ENTRANCE BELL UNITS
PLASTIC 6 INCH ENTRANCE BELLS, DPU-E# 285-103-00100 SHALL BE USED ON CONDUIT ENTRANCES TO MANHOLES.

ENTRANCE PIPES
GALVANIZED STEEL CONDUIT, M30-1550, SHALL BE USED FOR ALL BENDS. PIPES INTENDED FOR CABLES ON INITIAL INSTALLATION SHALL BE CAPPED WITH PLUGS (DPU-E# 285-103-00090) TO PREVENT CONTAMINATION FROM ENTERING THE PIPES.

INSTALLATION METHODS
EVERY EFFORT SHALL BE MADE TO INSURE A WATERTIGHT INSTALLATION OF ENTRANCE PIPES. WHERE PIPES ARE INSTALLED THROUGH AN OPENING LEFT IN A MANHOLE OR BROKEN OUT OF AN EXISTING MANHOLE WALL, SURFACES SHALL BE CLEANED, WETTED AND COVERED WITH A COATING OF 3 TO 1 SAND AND CEMENT MORTAR. IF BRICKWORK IS EXISTING ON THE INNER FACE OF WALL, IT SHALL ALSO BE COATED WITH A SAND AND CEMENT MORTAR. AN ALTERNATE PROCEDURE IS TO DRILL HOLES IN THE WALL AND GROUT THE PIPES IN PLACE WITH A SAND AND CEMENT MORTAR. THE INSIDE SURFACE OF THE HOLES SHALL BE ROUGHENED TO OBTAIN A STRONG AND WATERTIGHT BOND.

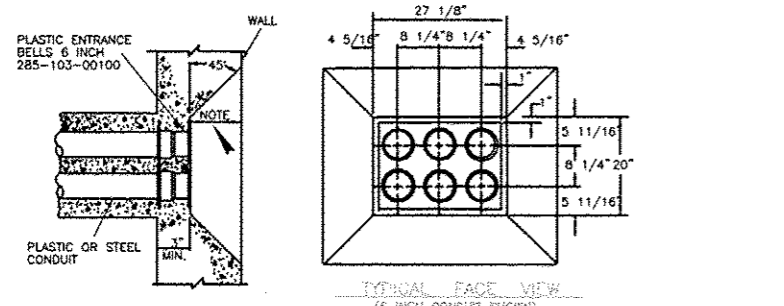


FIG. 1 MANHOLE ENTRANCE WITH PLASTIC TERMINATORS (OLDER STYLE) FOR PLASTIC OR STEEL CONDUIT (POCKET TYPE)

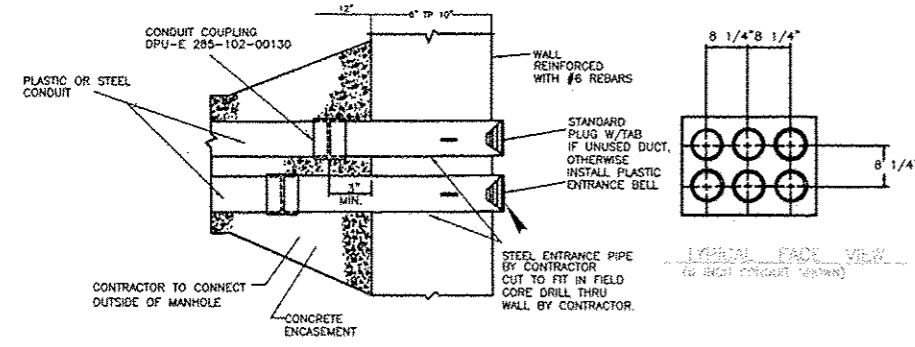
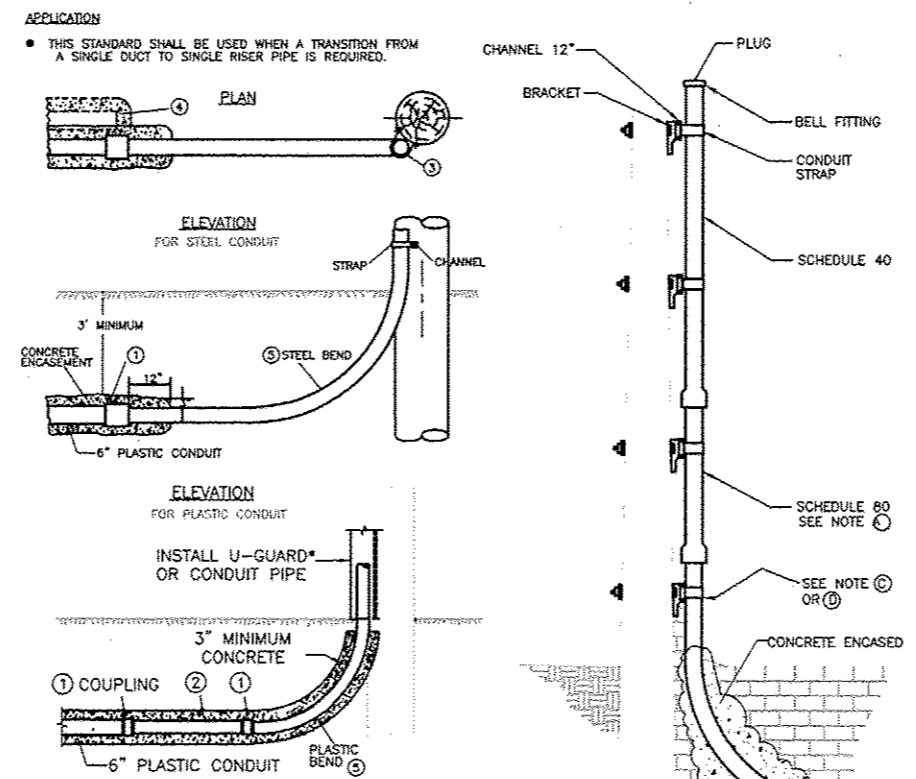


FIG. 2 ENTRANCE IN MANHOLE/HANDHOLE (NEWER STYLE)

NAPERVILLE PUBLIC UTILITIES DEPARTMENT ELECTRIC STANDARDS	DUCTBANK CONSTRUCTION SPECIFICATION	DATE: 04-24-07 Page 8 of 12 C30-1900
--	-------------------------------------	--

CONDUIT TO RISER AT POLE

RISER CONSTRUCTION
FOLLOW CONSTRUCTION STANDARD C20-5220

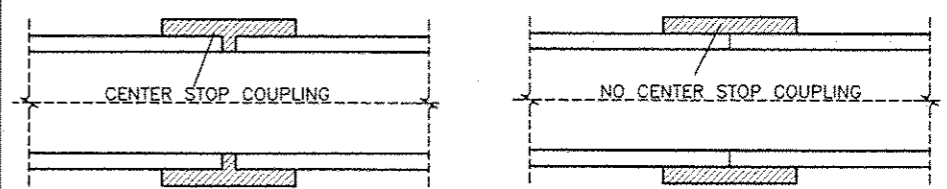


- SUPPLEMENTARY MATERIAL**
- ① IF BELLED END OF PLASTIC CONDUIT CAN BE CONNECTED TO STEEL BEND OMIT COUPLING.
- NOTES:**
- FIRST SECTION ABOVE ELBOW MUST BE SCHEDULE 80.
 - FOR LARGER POLES (>50'), ADDITIONAL CONDUIT AND HARDWARE MAY BE REQUIRED.
 - STEEL BEND AND POLE BRACKET EXISTING FROM PREVIOUS DUCT BANK INSTALLATION.
 - INSTALL STEEL BEND AND POLE BRACKET AND CHANNEL.
 - INSTALL SPARE OF CONDUIT UP POLE WITH BEND, ATTACH TO BRACKET AND PLUG.
- REVISIONS:**
- REVISION 1: BELLED END OF PLASTIC CONDUIT CAN BE CONNECTED TO STEEL BEND OMIT COUPLING.
 - REVISION 2: LOCATE THE BEND ON A QUADRANT OF THE POLE WHERE IT IS THE LEAST SUSCEPTIBLE TO DAMAGE BY VEHICLES.
 - REVISION 3: IF SPARE DUCT IS INSTALLED, PLUG AT BOTH ENDS AND ENCASE IN CONCRETE WHEN NECESSARY.
 - REVISION 4: SCHEDULE 80 PVC DOES NOT REQUIRE CONCRETE ENCASUREMENT.
 - REVISION 5: CONDUIT TO A U-GUARD RISER FOLLOWS C20-C22. FOR USE AT MAINTENANCE ONLY.

NAPERVILLE PUBLIC UTILITIES DEPARTMENT ELECTRIC STANDARDS	DUCTBANK CONSTRUCTION SPECIFICATION	DATE: 04-24-07 Page 9 of 12 C30-1900
--	-------------------------------------	--

PLASTIC CONDUIT COUPLINGS

SUBTITLE LINE TWO



PLASTIC TO PLASTIC OR PLASTIC TO STEEL COUPLING

SIZE	DPU-E #	MATERIAL / USE
3"	285-102-00040	PLASTIC TO PLASTIC
5"	285-102-00110	PLASTIC TO PLASTIC
6"	285-102-00140	PLASTIC TO STEEL

PLASTIC TO PLASTIC OR PLASTIC TO STEEL SLEEVE

SIZE	DPU-E #	MATERIAL / USE
3"	285-102-00080	PLASTIC TO PLASTIC
5"	285-102-00100	PLASTIC OR STEEL
6"	285-102-00130	PLASTIC OR STEEL



PLASTIC TO PLASTIC 5° COUPLING

SIZE	DPU-E #	MATERIAL / USE
3"	285-102-00050	PLASTIC TO PLASTIC
5"	285-102-00120	PLASTIC TO PLASTIC
6"	285-102-00150	PLASTIC TO PLASTIC

PLUG W/PULL TAB

SIZE	DPU-E #	MATERIAL / USE
3"	285-103-00030	PLASTIC
5"	285-103-00070	PLASTIC
6"	285-103-00090	PLASTIC



REVISIONS:

REVISION 1: BELLED END OF PLASTIC CONDUIT CAN BE CONNECTED TO STEEL BEND OMIT COUPLING.

REVISION 2: LOCATE THE BEND ON A QUADRANT OF THE POLE WHERE IT IS THE LEAST SUSCEPTIBLE TO DAMAGE BY VEHICLES.

REVISION 3: IF SPARE DUCT IS INSTALLED, PLUG AT BOTH ENDS AND ENCASE IN CONCRETE WHEN NECESSARY.

REVISION 4: SCHEDULE 80 PVC DOES NOT REQUIRE CONCRETE ENCASUREMENT.

REVISION 5: CONDUIT TO A U-GUARD RISER FOLLOWS C20-C22. FOR USE AT MAINTENANCE ONLY.

NAPERVILLE PUBLIC UTILITIES DEPARTMENT ELECTRIC STANDARDS	DUCTBANK CONSTRUCTION SPECIFICATION	DATE: 04-24-07 Page 10 of 12 C30-1900
--	-------------------------------------	---

PROJECT TITLE		ROUTE 59 ROAD IMPROVEMENTS	
PROJECT DESCRIPTION		DETAILS AND STANDARDS	
DESIGNER	DRAWING DATE	WSP #	SCALE
BCC	5-11-12	4211,4212,4223	N.T.S.
DESIGN BY	REVISIONS DATE	PLAT JOINT AGREEMENT #	PROJECT #
DL	PSM	N/A	EU-12
CHECKED BY	APPROVED BY	CAD FILE	SHEET #
		0060648001D130.DWG	30 OF 63
Naperville		Department of Public Utilities Electric Division	
		WORK REQUEST #	
		60468	