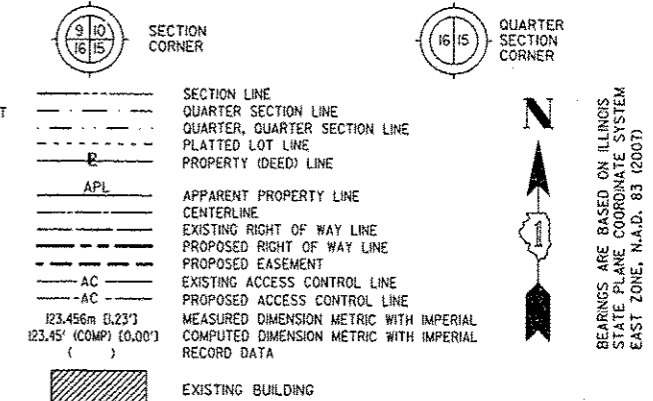


PART OF THE NE 1/4 SECTION 21 AND PART OF THE NW 1/4 SECTION 22, ALL IN T38N, R9E OF THE 3rd PM, NAPERVILLE TOWNSHIP, DUPAGE COUNTY, ILLINOIS.

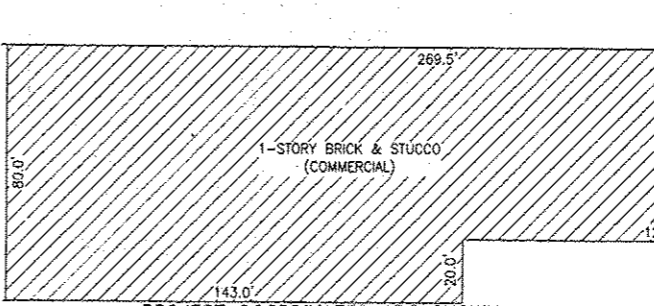
LEGEND



BEARINGS ARE BASED ON ILLINOIS STATE PLANE COORDINATE SYSTEM EAST ZONE, N.A.D. 83 (2007)

- NOTES:
- 1) ALL COORDINATES SHOWN HEREON ARE PROJECT. ALL DISTANCES SHOWN HEREON ARE GROUND.
 - 2) BEARINGS SHOWN HEREON ARE BASED ON ILLINOIS STATE PLANE COORDINATE SYSTEM EAST ZONE, NAD 83, (2007).
 - 3) THE COMBINATION FACTOR USED FOR THIS PROJECT = 0.99994777.
 - 4) COORDINATE CONVERSION
- NAD83 (2007) STATE PLANE COORDINATES TO PROJECT COORDINATES:
- A) DIVIDE THE STATE PLANE NAD83 GRID COORDINATES BY THE COMBINATION FACTOR.
 - B) SUBTRACT 1,000,000.00 FROM THESE NORTHINGS AND EASTINGS.
- PROJECT COORDINATES TO NAD83 (2007) STATE PLANE COORDINATES:
- A) ADD 1,000,000.00 TO THE PROJECT NORTHINGS AND EASTINGS.
 - B) MULTIPLY THESE COORDINATES BY THE COMBINATION FACTOR.
- 5) THE NGS MONUMENT HELD FOR THIS PROJECT IS FIRST ORDER P.I.D. AA3730.

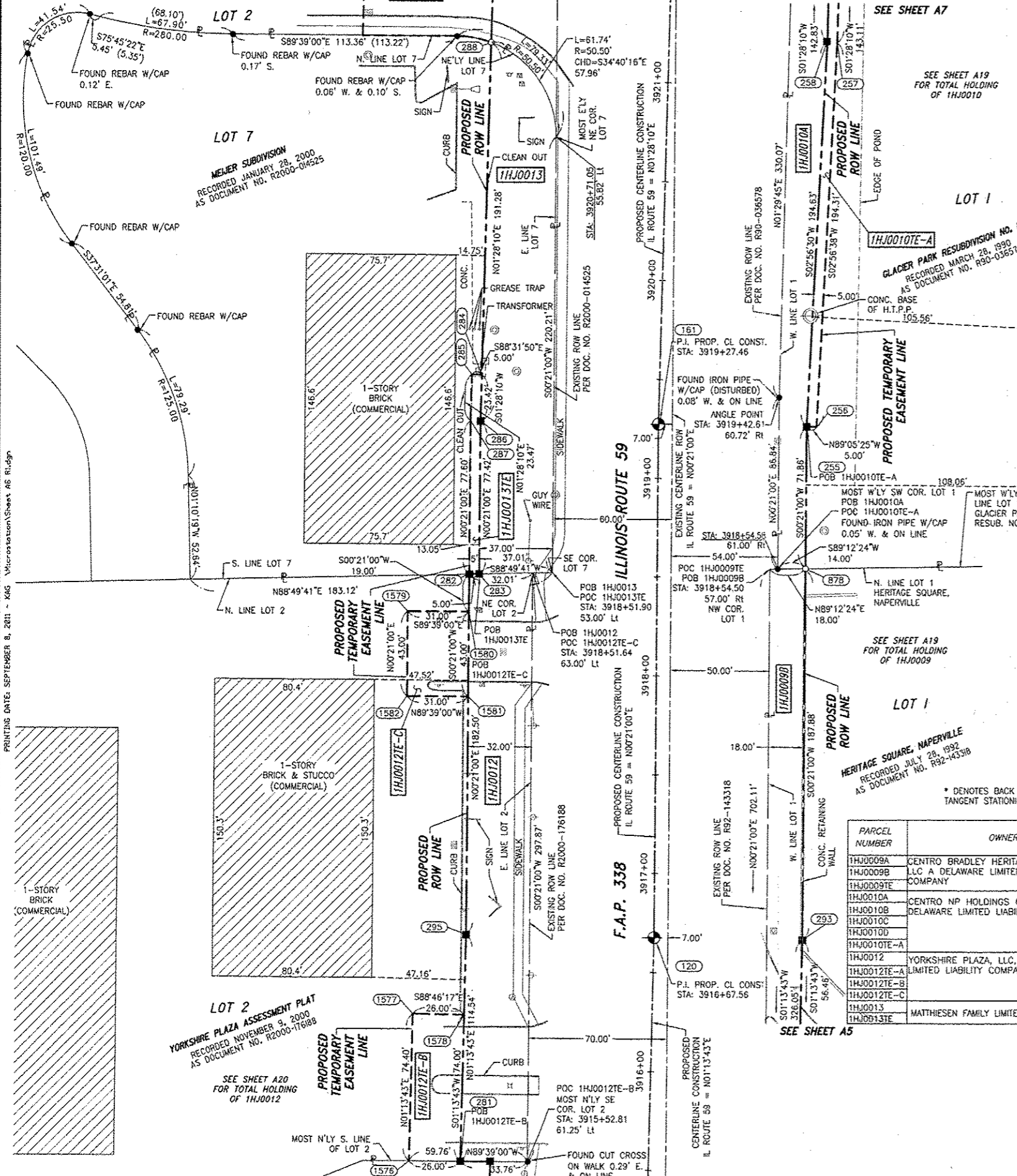
NAD83 (2007) S.P.	PROJECT (GROUND)
N. 1,869,327.5048	N. 869,425.1449
E. 1,023,602.1293	E. 23,655.5948



NO.	STATION	OFFSET	NORTH	EAST
1576	3915+51.89	121.00' LT.	N. 856,950.6620 E.	18,949.3668
281	3915+52.29	95.00' LT.	N. 856,950.5031 E.	18,975.3693
1577	3916+26.29	121.00' LT.	N. 857,025.0438 E.	18,950.9621
1578	3916+26.29	95.00' LT.	N. 857,024.4861 E.	18,976.9561
120	3916+67.56	00.00' RT.	N. 857,063.7049 E.	18,972.8192
293	3916+68.14*	75.00' RT.	N. 857,062.6717 E.	19,147.8142
295	3916+68.29	95.00' LT.	N. 857,065.0137 E.	18,977.8254
1581	3917+88.79	85.00' LT.	N. 857,185.5100 E.	18,978.5615
1582	3917+88.79	126.00' LT.	N. 857,185.6994 E.	18,947.5621
1580	3918+31.79	95.00' LT.	N. 857,228.5092 E.	18,978.8242
1579	3918+31.79	126.00' LT.	N. 857,228.6986 E.	18,947.8248
282	3918+50.79	95.00' LT.	N. 857,247.5088 E.	18,978.9403
283	3918+50.92	90.00' LT.	N. 857,247.6111 E.	18,983.9410
878	3918+54.86	75.00' RT.	N. 857,250.5472 E.	19,148.9620
287	3919+26.53*	95.00' LT.	N. 857,325.1074 E.	18,979.4143
286	3919+26.58*	90.00' LT.	N. 857,325.0280 E.	18,984.4140
256	3919+26.68*	80.00' RT.	N. 857,322.3287 E.	19,154.4006
255	3919+26.72*	75.00' RT.	N. 857,322.4091 E.	19,149.4010
161	3919+27.45	00.00' RT.	N. 857,323.5990 E.	19,074.4069
285	3919+50.00	95.00' LT.	N. 857,348.5708 E.	18,980.0163
284	3919+50.00	90.00' LT.	N. 857,348.4426 E.	18,985.0146
288	3921+17.86	90.00' LT.	N. 857,516.2436 E.	18,989.3192
257	3921+22.48	85.00' RT.	N. 857,516.3780 E.	19,164.3802
258	3921+22.76	80.00' RT.	N. 857,516.7862 E.	19,159.3891

PARCEL NUMBER	OWNER	TOTAL HOLDING ACRES	PART TAKEN ACRES	REMAINDER ACRES	PREV. DED. ACRES	EASEMENT ACRES	EASEMENT PURPOSE	PERMANENT TAX INDEX NUMBER	PROPERTY ACQUIRED BY
1HJ0009A	CENTRO BRADLEY HERITAGE SQUARE, LLC A DELAWARE LIMITED LIABILITY COMPANY	16.423	0.035	16.117				07-22-102-011	
1HJ0009B			0.271			0.132	CONSTRUCTION		
1HJ0009E									
1HJ0010A	CENTRO NP HOLDINGS 6 SPE, LLC, A DELAWARE LIMITED LIABILITY COMPANY	50.079	0.201	49.652				07-22-102-010	
1HJ0010B			0.041						
1HJ0010C			0.169						
1HJ0010D			0.016						
1HJ0010E-A						0.039	CONSTRUCTION		
1HJ0012	YORKSHIRE PLAZA, LLC, A DELAWARE LIMITED LIABILITY COMPANY	34.730	0.221	34.518				07-21-200-049	
1HJ0012E-A						0.042	CONSTRUCTION	07-21-200-050	
1HJ0012E-B						0.044	CONSTRUCTION		
1HJ0012E-C						0.031	CONSTRUCTION		
1HJ0013	MATTHIENSEN FAMILY LIMITED PARTNERSHIP	1.404	0.210	1.194				07-21-200-044	
1HJ0013E						0.012	CONSTRUCTION		

- SYMBOL LEGEND
- INLET
 - LIGHT POLE
 - POWER POLE
 - HIGH TENSION POWER POLE
 - SIGN
 - MANHOLE
 - TRAFFIC SIGNAL HANDHOLE
 - ELECTRICAL OUTLET
 - IRRIGATION CONTROL VALVE
 - PHONE PEDESTAL
 - FIRE HYDRANT
 - VALVE BOX
 - VALVE VAULT
 - FLARED END SECTION
 - TRAFFIC SIGNAL
 - PHONE HANDHOLE
 - GAS VALVE
 - ELECTRIC VAULT
 - GAS HANDHOLE
 - GAS METER
 - IDOT JUNCTION BOX



F.A.P. 338 ILLINOIS ROUTE 59, SECTION FERRY ROAD TO AURORA AVENUE, JOB. NO. R-91-035-09.

SEPTEMBER 6, 2011
REVISION DATE: MAY 26, 2010

ADDED 1HJ0012E-B & 1HJ0012E-C
REVISION: ADDED STATIONING TO EXISTING ROW.

JMH
MADE BY: JLS

PLAT OF HIGHWAYS
STATE OF ILLINOIS
DEPARTMENT OF TRANSPORTATION
F.A.P. 338 ILLINOIS ROUTE 59

SECTION FERRY RD. TO AURORA AVE. DUPAGE COUNTY
PROJECT
STATION 3915+50
SCALE: 1" = 30'

JOB NO. R-91-035-09
TO STATION 3921+22.76
SHEET A6 OF 222

BUREAU OF LAND ACQUISITION
201 WEST CENTER COURT
SCHAUMBURG, ILLINOIS 60196-1096