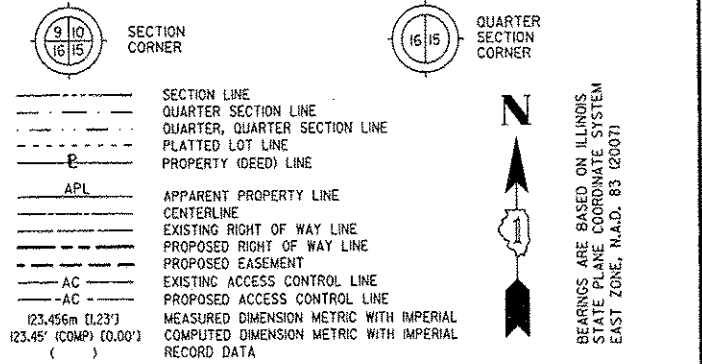
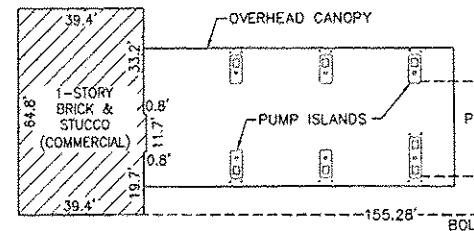
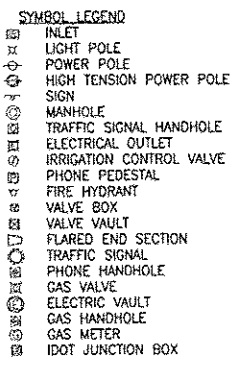


PART OF THE NE 1/4 SECTION 21 AND PART OF THE NW 1/4 SECTION 22, ALL IN T38N, R9E OF THE 3rd PM, NAPERVILLE TOWNSHIP, DUPAGE COUNTY, ILLINOIS.

LEGEND



BEARINGS ARE BASED ON ILLINOIS STATE PLANE COORDINATE SYSTEM EAST ZONE, N.A.D. 83 (2007)



MEYER SUBDIVISION RECORDED JANUARY 28, 2000 AS DOCUMENT NO. R2000-014525

GLACIER PARK RESUBDIVISION NO. 1 RECORDED MARCH 28, 1990 AS DOCUMENT NO. R90-036578

PRINTING DATE: DECEMBER 14, 2011 - K&G Microstation/Sheet A9 R4.dgn

PROJECT COORDINATES ARE SHOWN

| NO.  | STATION    | OFFSET     | NORTH-COORDINATES-EAST       |
|------|------------|------------|------------------------------|
| 121  | 3925+41.68 | 00.00' LT  | N 857,937.6168 E 19,090.1583 |
| 297  | 3925+69.94 | 90.00' LT  | N 857,986.4265 E 19,000.3326 |
| 298  | 3925+72.50 | 95.00' LT  | N 857,989.0199 E 18,995.3484 |
| 882  | 3925+79.73 | 85.00' RT  | N 857,975.1543 E 19,173.3892 |
| 834  | 3925+91.73 | 96.99' RT  | N 857,987.0738 E 19,187.4555 |
| 1618 | 3925+92.55 | 122.00' RT | N 857,987.7456 E 19,212.4691 |
| 299  | 3925+94.53 | 95.00' LT  | N 857,991.0493 E 18,995.4830 |
| 1620 | 3925+94.53 | 127.00' LT | N 857,991.2448 E 18,963.4836 |
| 831  | 3926+41.73 | 90.99' RT  | N 858,037.1093 E 19,181.7601 |
| 1510 | 3926+41.73 | 122.00' RT | N 858,036.9199 E 19,212.7695 |
| 884  | 3926+47.72 | 85.00' RT  | N 858,043.1382 E 19,175.8045 |
| 1619 | 3926+51.87 | 122.00' RT | N 858,047.0593 E 19,212.8315 |
| 271  | 3926+53.30 | 85.00' RT  | N 858,048.7186 E 19,175.8386 |
| 272  | 3926+66.00 | 85.00' RT  | N 858,061.4184 E 19,175.9162 |
| 273  | 3926+66.00 | 75.00' RT  | N 858,061.4794 E 19,165.9164 |
| 1622 | 3926+86.73 | 95.00' LT  | N 858,083.2445 E 18,998.0462 |
| 1621 | 3926+86.73 | 127.00' LT | N 858,083.4400 E 18,964.0468 |
| 275  | 3928+18.57 | 75.00' RT  | N 858,214.0466 E 19,166.8485 |
| 276  | 3928+18.57 | 85.00' RT  | N 858,213.9855 E 19,176.8483 |
| 277  | 3928+28.57 | 85.00' RT  | N 858,223.9853 E 19,176.9094 |
| 278  | 3928+28.57 | 75.00' RT  | N 858,224.0464 E 19,166.8096 |
| 274  | 3929+03.73 | 75.00' RT  | N 858,289.2055 E 19,167.3687 |
| 1104 | 3929+22.05 | 95.00' LT  | N 858,316.5659 E 18,997.4638 |

SEE SHEET A7

| PARCEL NUMBER | OWNER   | TOTAL HOLDING ACRES | PART TAKEN ACRES   | REMAINDER ACRES | PREV. DED. ACRES | EASEMENT ACRES | EASEMENT PURPOSE | PERMANENT TAX INDEX NUMBER                      | PROPERTY ACQUIRED BY |
|---------------|---|---------------------|--------------------|-----------------|------------------|----------------|------------------|---|----------------------|
| 1HJ0010A      | CENTRO NP HOLDINGS 6 SPE, LLC, A DELAWARE LIMITED LIABILITY COMPANY | 50.079              | 0.201              | 49.652          |                  |                |                  | 07-22-102-009<br>07-22-102-010                  |                      |
| 1HJ0010B      |   |                     | 0.041              |                 |                  |                |                  |   |                      |
| 1HJ0010C      |   |                     | 0.189              |                 |                  |                |                  |   |                      |
| 1HJ0010D      |   |                     | 0.018              |                 |                  |                |                  |   |                      |
| 1HJ0010E      |   |                     | 0.060              |                 |                  |                |                  |   |                      |
| 1HJ0014A      | MEYER STORES LIMITED PARTNERSHIP, A MICHIGAN LIMITED PARTNERSHIP    | 38.327              | 0.250              | 37.940          |                  |                |                  | 07-21-200-040<br>07-21-200-052<br>07-21-200-053 |                      |
| 1HJ0014C      |   |                     | 0.059              |                 |                  |                |                  |   |                      |
| 1HJ0014D      |   |                     | 0.018              |                 |                  |                |                  |   |                      |
| 1HJ0014E      |   |                     | 0.077              |                 |                  |                |                  |   |                      |
| 1HJ0020E      | SLEVIN CAPITAL DEVELOPMENT, INC., A CALIFORNIA CORPORATION          | 1.152               | 0.077              | 1.075           |                  |                |                  | 07-22-102-004                                   |                      |
| 1HJ0020PE     |   |                     | 0.009 AC<br>384 SF |                 |                  |                |                  |   |                      |
| 1HJ0020TE-B   |   |                     | 0.002 AC<br>100 SF |                 |                  |                |                  |   |                      |

- NOTES:
- ALL COORDINATES SHOWN HEREON ARE PROJECT. ALL DISTANCES SHOWN HEREON ARE HORIZONTAL.
  - BEARINGS SHOWN HEREON ARE BASED ON ILLINOIS STATE PLANE COORDINATE SYSTEM EAST ZONE, NAD 83, (2007).
  - THE COMBINATION FACTOR USED FOR THIS PROJECT = 0.99994777.
  - COORDINATE CONVERSION  
NAD83 (2007) STATE PLANE COORDINATES TO PROJECT COORDINATES:  
A) DIVIDE THE STATE PLANE NAD83 GRID COORDINATES BY THE COMBINATION FACTOR.  
B) SUBTRACT 1,000,000.00 FROM THESE NORTHINGS AND EASTINGS.
  - THE NGS MONUMENT HELD FOR THIS PROJECT IS FIRST ORDER P.I.D. AA3730.  
NAD83 (2007) S.P. PROJECT (GROUND)  
N. 1,869,327.5048 E. 2,655.5948  
N. 869,425.1449 E. 23,655.5948

RECEIVED  
DEC 14 2011  
PLATS & LEGALS

Claassen, White & Associates, P.C.  
121 AIRPORT DRIVE, UNIT 1  
JOLIET, ILLINOIS 60431  
(815) 744-3720

SHEET 1 IS A COVER SHEET AND NOT RECORDED.

**PLAT OF HIGHWAYS**  
STATE OF ILLINOIS  
DEPARTMENT OF TRANSPORTATION  
F.A.P. 338 ILLINOIS ROUTE 59

SECTION FERRY RD. TO AURORA AVE. DUPAGE COUNTY  
PROJECT JOB NO. R-91-035-09  
STATION 3925+00 TO STATION 3929+22  
SCALE: 1" = 30' SHEET AB OF 222

BUREAU OF LAND ACQUISITION  
201 WEST CENTER COURT  
SCHAMBURG, ILLINOIS 60196-1096