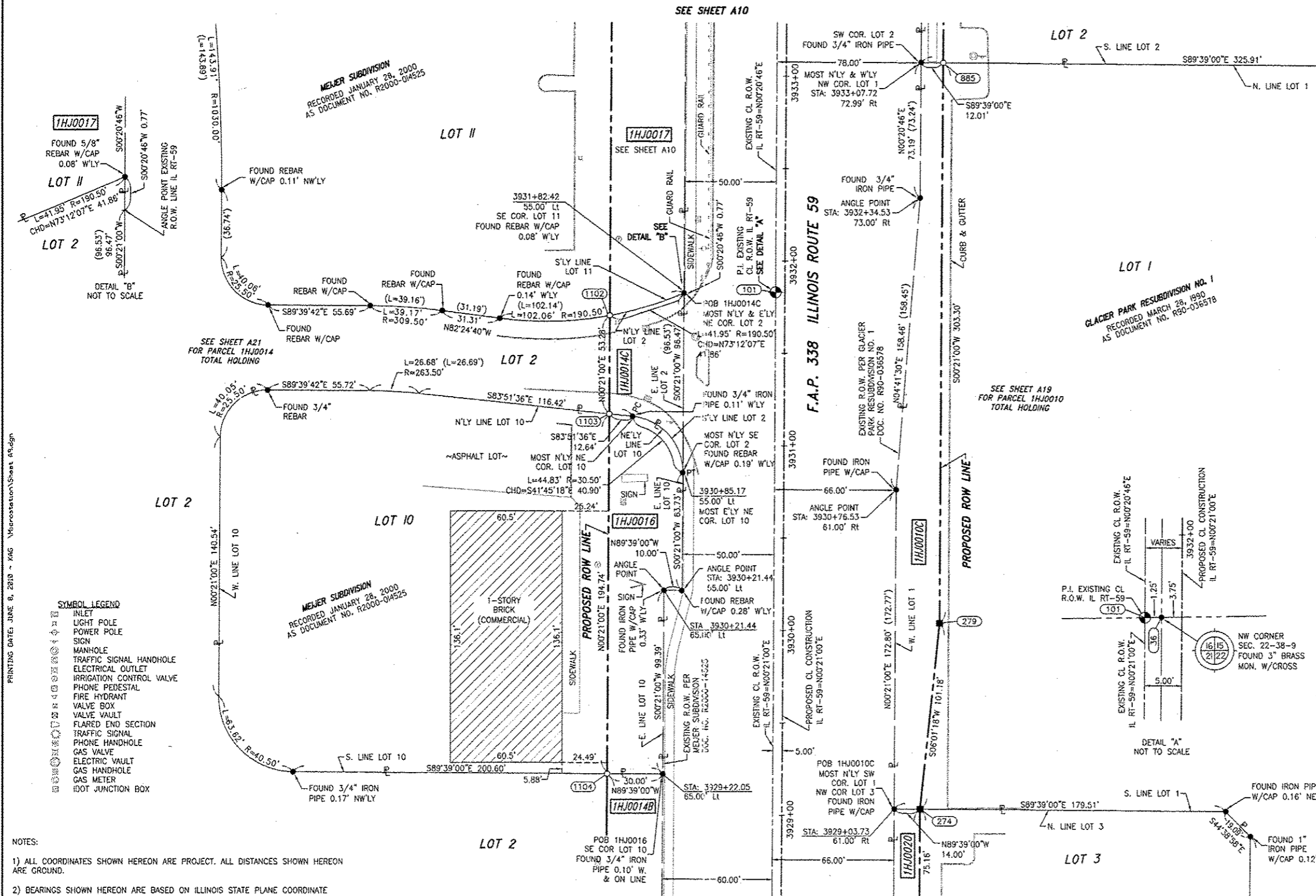


BEARINGS ARE BASED ON ILLINOIS STATE PLANE COORDINATE SYSTEM EAST ZONE, N.A.D. 83 (2007)



- SYMBOL LEGEND**
- INLET
 - LIGHT POLE
 - POWER POLE
 - SIGN
 - MANHOLE
 - TRAFFIC SIGNAL HANDHOLE
 - ELECTRICAL OUTLET
 - IRRIGATION CONTROL VALVE
 - PHONE PEDESTAL
 - FIRE HYDRANT
 - VALVE BOX
 - VALVE VAULT
 - FLARED END SECTION
 - TRAFFIC SIGNAL HANDHOLE
 - PHONE HANDHOLE
 - GAS VALVE
 - ELECTRIC VAULT
 - GAS HANDHOLE
 - GAS METER
 - IDOT JUNCTION BOX

- NOTES:**
- ALL COORDINATES SHOWN HEREON ARE PROJECT. ALL DISTANCES SHOWN HEREON ARE GROUND.
 - BEARINGS SHOWN HEREON ARE BASED ON ILLINOIS STATE PLANE COORDINATE SYSTEM EAST ZONE, NAD 83, (2007).
 - THE COMBINATION FACTOR USED FOR THIS PROJECT = 0.99994777.
 - COORDINATE CONVERSION
 - NAD83 (2007) STATE PLANE COORDINATES TO PROJECT COORDINATES:
 - DIVIDE THE STATE PLANE NAD83 GRID COORDINATES BY THE COMBINATION FACTOR.
 - SUBTRACT 1,000,000.00 FROM THESE NORTHINGS AND EASTINGS.
 - PROJECT COORDINATES TO NAD83 (2007) STATE PLANE COORDINATES:
 - ADD 1,000,000.00 TO THE PROJECT NORTHINGS AND EASTINGS.
 - MULTIPLY THESE COORDINATES BY THE COMBINATION FACTOR.
 - THE NGS MONUMENT HELD FOR THIS PROJECT IS FIRST ORDER P.I.D. AA3730.

NAD83 (2007) S.P.	PROJECT (GROUND)
N. 1,869,327.5045	N. 869,425.1449
E. 1,023,602.1293	E. 23,653.5948

PROJECT COORDINATES ARE SHOWN

NO.	STATION	OFFSET	COORDINATES - NORTH	COORDINATES - EAST
274	3929+03.73	75.00' RT	N 858,299.2055	E 19,167.3687
1104	3929+22.05	95.00' LT	N 858,318.5659	E 18,997.4838
279	3930+04.42	85.00' RT	N 858,389.8320	E 19,177.9837
1103	3931+16.79	95.00' LT	N 858,513.3920	E 18,998.6735
1102	3931+70.08	95.00' LT	N 858,566.5839	E 18,998.9990
101	3931+83.04	5.00' LT	N 858,579.0006	E 19,089.0766
38	3931+83.04	3.75' LT	N 858,578.9929	E 19,090.3265
885	3933+07.72	85.00' RT	N 858,703.1283	E 18,179.8356

PARCEL NUMBER	OWNER	TOTAL HOLDING ACRES	PART TAKEN ACRES	REMAINDER ACRES	PREV. DED. ACRES	EASEMENT ACRES	EASEMENT PURPOSE	PERMANENT TAX INDEX NUMBER	PROPERTY ACQUIRED BY
11HJ0010A	CENTRO NP HOLDINGS 6 SPE, LLC, A DELAWARE LIMITED LIABILITY COMPANY	50.078	0.201	49.578				07-22-102-009	
11HJ0010B			0.041					07-22-102-010	
11HJ0010C			0.169						
11HJ0010D			0.090						
11HJ0014A			0.060						
11HJ0014B	MEUER STORES LIMITED PARTNERSHIP, A MICHIGAN LIMITED PARTNERSHIP	38.327	0.250	37.940				07-21-200-040	
11HJ0014C			0.050					07-21-200-052	
11HJ0014D			0.018					07-21-200-053	
11HJ0015	WONDORA, LLC, A NEW JERSEY LIMITED LIABILITY COMPANY	1.124	0.151	0.973				07-21-200-041	

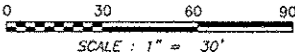
STATE OF ILLINOIS)
COUNTY OF WILL) SS

THIS IS TO CERTIFY THAT WE, CLAASSEN, WHITE & ASSOCIATES, P.C., AN ILLINOIS PROFESSIONAL DESIGN FIRM LAND SURVEYING CORPORATION NUMBER 184-004039, HAVE SURVEYED THE PLAT OF HIGHWAYS SHOWN HEREON BETWEEN SECTION 21, 22, 15 AND 16, TOWNSHIP 38 NORTH, RANGE 9 EAST OF THE THIRD PRINCIPAL MERIDIAN, DUPAGE COUNTY, THAT THE SURVEY IS TRUE AND COMPLETE AS SHOWN TO THE BEST OF MY KNOWLEDGE AND BELIEF, THAT THE PLAT CORRECTLY REPRESENTS SAID SURVEY, THAT ALL MONUMENTS FOUND AND ESTABLISHED ARE OF PERMANENT QUALITY AND OCCUPY THE POSITIONS SHOWN THEREON AND THAT THE MONUMENTS ARE SUFFICIENT TO ENABLE THE SURVEY TO BE RETRACED. THIS SURVEY CONFORMS TO THE CURRENT ILLINOIS MINIMUM STANDARDS FOR A BOUNDARY SURVEY. MADE FOR THE DEPARTMENT OF TRANSPORTATION, STATE OF ILLINOIS.

DATED AT JOLIET, ILLINOIS THIS ____ DAY OF _____, 2010 A.D.

VICE PRESIDENT

DAVID A. CLAASSEN
ILLINOIS PROFESSIONAL LAND SURVEYOR NO. 035-002562
LICENSE EXPIRES NOVEMBER 30, 2010
THIS PROFESSIONAL SERVICE CONFORMS TO THE CURRENT ILLINOIS MINIMUM STANDARDS FOR A BOUNDARY SURVEY.



RECEIVED
JUN 0 9 2010
PLATS & LEGALS

Classsen, White & Associates, P.C.
121 AIRPORT DRIVE, UNIT 1
JOLIET, ILLINOIS 60431
(815) 744-3720

SHEET 1 IS A COVER SHEET AND NOT RECORDED.

PLAT OF HIGHWAYS
STATE OF ILLINOIS
DEPARTMENT OF TRANSPORTATION
F.A.P. 338 ILLINOIS ROUTE 59

SECTION FERRY RD. TO AURORA AVE. DUPAGE COUNTY
PROJECT JOB NO. R-91-035-09
STATION 3929+00 TO STATION 3933+08
SCALE: 1" = 30' SHEET 19 OF 222

BUREAU OF LAND ACQUISITION
201 WEST CENTER COURT
SCHAUMBURG, ILLINOIS 60196-1096