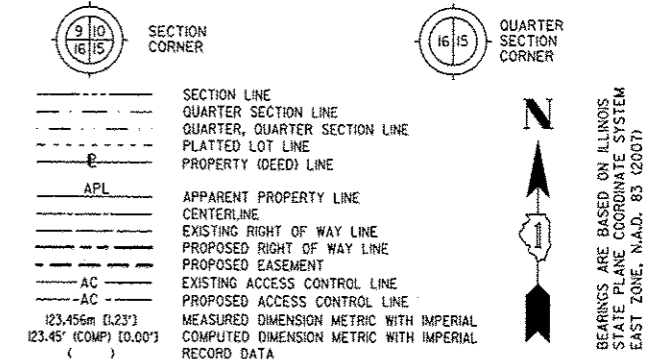


PART OF THE SE 1/4 SECTION 16 IN T38N, R9E OF THE 3rd PM, NAPERVILLE TOWNSHIP, DUPAGE COUNTY, ILLINOIS.

LEGEND

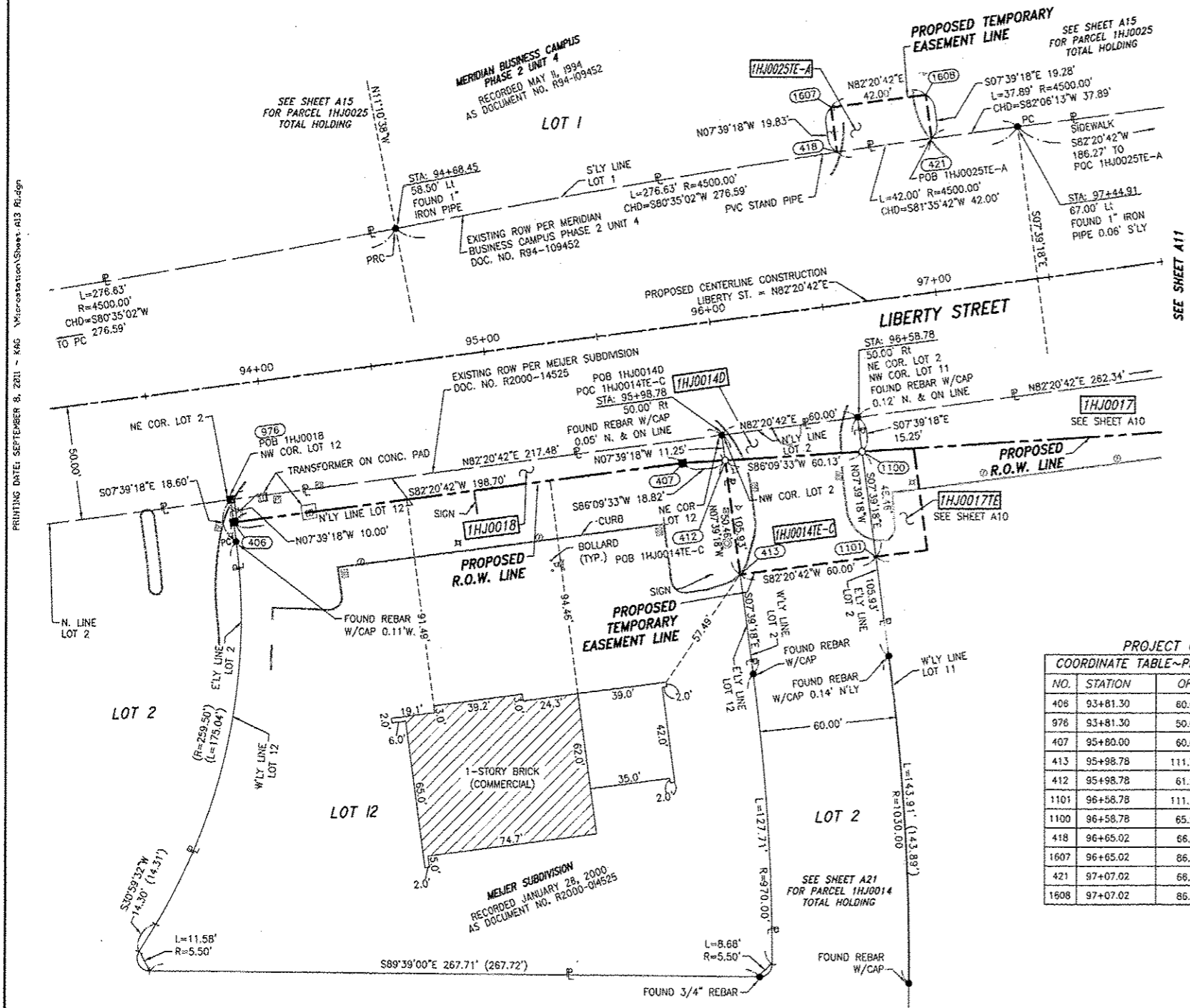


BEARINGS ARE BASED ON ILLINOIS STATE PLANE COORDINATE SYSTEM EAST ZONE, N.A.D. 83 (2007)

- NOTES:
- 1) ALL COORDINATES SHOWN HEREON ARE PROJECT. ALL DISTANCES SHOWN HEREON ARE GROUND.
  - 2) BEARINGS SHOWN HEREON ARE BASED ON ILLINOIS STATE PLANE COORDINATE SYSTEM EAST ZONE, NAD 83, (2007).
  - 3) THE COMBINATION FACTOR USED FOR THIS PROJECT = 0.99994777.
  - 4) COORDINATE CONVERSION  
 NAD83 (2007) STATE PLANE COORDINATES TO PROJECT COORDINATES:  
 A) DIVIDE THE STATE PLANE NAD83 GRID COORDINATES BY THE COMBINATION FACTOR.  
 B) SUBTRACT 1,000,000.00 FROM THESE NORTHINGS AND EASTINGS.  
 PROJECT COORDINATES TO NAD83 (2007) STATE PLANE COORDINATES:  
 A) ADD 1,000,000.00 TO THE PROJECT NORTHINGS AND EASTINGS.  
 B) MULTIPLY THESE COORDINATES BY THE COMBINATION FACTOR.
  - 5) THE NGS MONUMENT HELD FOR THIS PROJECT IS FIRST ORDER P.I.D. AA3730.

NAD83 (2007) S.P.	PROJECT (GROUND)
N. 1,869,327.5048	N. 869,425.1449
E. 1,023,602.1293	E. 23,655.5948

PARCEL NUMBER	OWNER	TOTAL HOLDING ACRES	PART TAKEN ACRES	REMAINDER ACRES	PREV. DED. ACRES	EASEMENT ACRES	EASEMENT PURPOSE	PERMANENT TAX INDEX NUMBER	PROPERTY ACQUIRED BY
1HJ0014A	MEJER STORES LIMITED PARTNERSHIP, A MICHIGAN LIMITED PARTNERSHIP	38.327	0.060	37.940				07-21-200-040 07-21-200-052 07-21-200-053	
1HJ0014B			0.250						
1HJ0014C			0.059						
1HJ0014D			0.018						
1HJ0014E-C						0.067	CONSTRUCTION		
1HJ0018	CURFIN PROPERTIES AURORA, LLC, AN ILLINOIS LIMITED LIABILITY COMPANY	1.215	0.050	1.165				07-16-401-008	
1HJ0025	GATEWAY VIRGINIA PROPERTIES, INC., A CALIFORNIA CORPORATION	20.091	0.613	19.478				07-16-402-001 07-16-402-003 07-16-402-004 07-16-402-005	
1HJ0025E-A									



PROJECT COORDINATES ARE SHOWN

NO.	STATION	OFFSET	-NORTH-COORDINATES-EAST-	
406	93+81.30	60.00' RT	N 858,836.1604	E 18,491.3193
978	93+81.30	50.00' RT	N 858,846.0712	E 18,489.9873
407	95+80.00	60.00' RT	N 858,862.6290	E 18,688.2500
413	95+98.78	111.71' RT	N 858,813.8813	E 18,713.7494
412	95+98.78	61.25' RT	N 858,863.8898	E 18,707.0279
1101	96+58.78	111.71' RT	N 858,821.8738	E 18,773.2147
1100	96+58.78	65.25' RT	N 858,867.9179	E 18,767.0261
418	96+65.02	66.29' LT	N 858,998.1201	E 18,755.6893
1607	96+65.02	86.12' LT	N 859,018.7722	E 18,753.0479
421	97+07.02	68.84' LT	N 859,005.2597	E 18,797.2417
1608	97+07.02	86.12' LT	N 859,024.3670	E 18,794.6736

- SYMBOL LEGEND
- INLET
  - LIGHT POLE
  - POWER POLE
  - SIGN
  - MANHOLE
  - TRAFFIC SIGNAL HANDHOLE
  - ELECTRICAL OUTLET
  - IRRIGATION CONTROL VALVE
  - PHONE PEDESTAL
  - FIRE HYDRANT
  - VALVE BOX
  - VALVE VAULT
  - FLARED END SECTION
  - TRAFFIC SIGNAL
  - PHONE HANDHOLE
  - GAS VALVE
  - ELECTRIC VAULT
  - GAS HANDHOLE
  - GAS METER
  - IDOT JUNCTION BOX

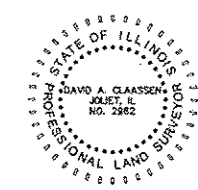
STATE OF ILLINOIS )  
 COUNTY OF WILL )

THIS IS TO CERTIFY THAT WE, CLAASSEN, WHITE & ASSOCIATES, P.C., AN ILLINOIS PROFESSIONAL DESIGN FIRM LAND SURVEYING CORPORATION NUMBER 184-004039, HAVE SURVEYED THE PLAT OF HIGHWAYS SHOWN HEREON IN SECTION 16, TOWNSHIP 38 NORTH, RANGE 9 EAST OF THE THIRD PRINCIPAL MERIDIAN, DUPAGE COUNTY, THAT THE SURVEY IS TRUE AND COMPLETE AS SHOWN TO THE BEST OF MY KNOWLEDGE AND BELIEF, THAT THE PLAT CORRECTLY REPRESENTS SAID SURVEY, THAT ALL MONUMENTS FOUND AND ESTABLISHED ARE OF PERMANENT QUALITY AND OCCUPY THE POSITIONS SHOWN THEREON AND THAT THE MONUMENTS ARE SUFFICIENT TO ENABLE THE SURVEY TO BE RETRACED. THIS SURVEY CONFORMS TO THE CURRENT ILLINOIS MINIMUM STANDARDS FOR A BOUNDARY SURVEY. MADE FOR THE DEPARTMENT OF TRANSPORTATION, STATE OF ILLINOIS.

DATED AT JOLIET, ILLINOIS THIS \_\_\_\_ DAY OF \_\_\_\_\_, 2011 A.D.

\_\_\_\_\_  
 VICE PRESIDENT

DAVID A. CLAASSEN  
 ILLINOIS PROFESSIONAL LAND SURVEYOR NO. 035-002962  
 LICENSE EXPIRES NOVEMBER 30, 2012  
 THIS PROFESSIONAL SERVICE CONFORMS TO THE CURRENT ILLINOIS MINIMUM STANDARDS FOR A BOUNDARY SURVEY.



RECEIVED  
 SEP 14 2011  
 PLATS & LEGALS

Clasassen, White & Associates, P.C.  
 121 AIRPORT DRIVE, UNIT 1  
 JOLIET, ILLINOIS 60431  
 (815) 744-3720

SHEET 1 IS A COVER SHEET AND NOT RECORDED.

**PLAT OF HIGHWAYS**  
**STATE OF ILLINOIS**  
**DEPARTMENT OF TRANSPORTATION**  
**F.A.P. 338 ILLINOIS ROUTE 59**

SECTION FERRY RD. TO AURORA AVE. DUPAGE COUNTY  
 PROJECT JOB NO. R-91-035-09  
 STATION 3934+00 TO STATION 3937+00  
 SCALE: 1" = 30' SHEET A13 OF 222

BUREAU OF LAND ACQUISITION  
 201 WEST CENTER COURT  
 SCHAUMBURG, ILLINOIS 60196-1096