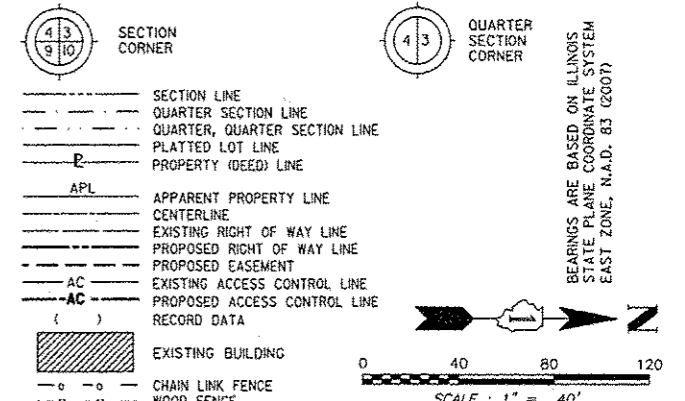


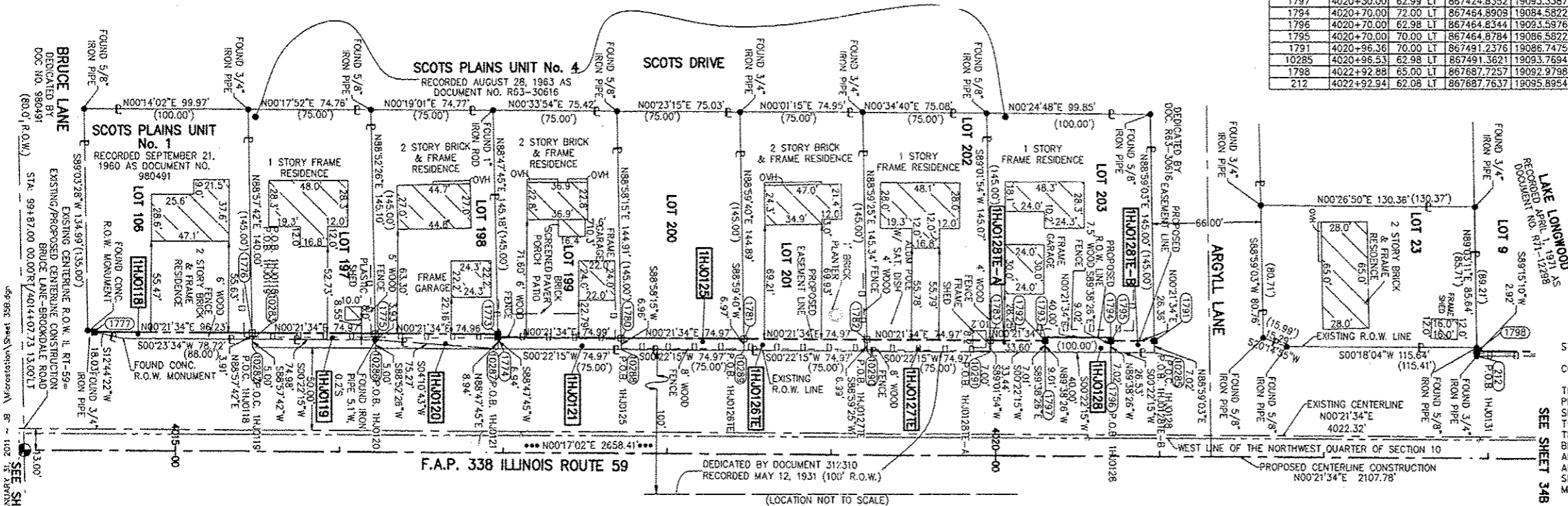
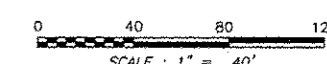
PART OF THE NE 1/4 SECTION 9, T38N, R9E OF THE 3rd PM, NAPERVILLE TOWNSHIP, DUPAGE COUNTY, ILLINOIS.

NO.	STATION	OFFSET	NORTH	EAST
1777	4014+50.27	72.00 LT	866845.1757	19080.6959
1776	4015+46.51	72.00 LT	866941.4077	19081.2994
10283	4015+46.60	68.09 LT	866941.4786	19085.2113
10282	4015+46.72	63.09 LT	866941.5692	19090.2103
1775	4016+21.48	72.00 LT	867016.3766	19081.7693
10286	4016+21.71	63.07 LT	867016.5521	19090.6958
1773	4016+96.43	72.00 LT	867091.3326	19082.2396
1774	4016+96.49	70.00 LT	867091.3746	19084.2399
10287	4016+96.68	63.06 LT	867091.5205	19091.1811
1780	4017+21.48	70.00 LT	867166.3640	19084.7101
10288	4017+21.65	63.04 LT	867166.4880	19091.6664
1781	4018+46.45	70.00 LT	867241.3350	19085.1803
10289	4018+46.62	63.03 LT	867241.4574	19092.1517
1782	4019+21.42	70.00 LT	867316.3027	19085.6504
10290	4019+21.59	63.01 LT	867316.4258	19092.6370
1783	4019+96.40	70.00 LT	867391.2759	19086.1206
10291	4019+96.56	63.00 LT	867391.3942	19093.1223
1792	4020+30.00	70.00 LT	867424.8792	19086.3313
1793	4020+30.00	72.00 LT	867424.8917	19084.3314
1797	4020+30.00	62.99 LT	867424.8352	19093.3387
1794	4020+70.00	72.00 LT	867464.8908	19084.5822
1796	4020+70.00	62.98 LT	867464.8344	19093.5976
1795	4020+70.00	70.00 LT	867464.8784	19086.5822
1791	4020+96.36	70.00 LT	867491.2376	19086.7476
10285	4020+96.53	62.98 LT	867491.3621	19093.7694
1798	4022+92.88	65.00 LT	867687.7257	19092.9798
212	4022+92.94	62.08 LT	867687.7637	19095.8954

LEGEND



BEARINGS ARE BASED ON ILLINOIS STATE PLANE COORDINATE SYSTEM EAST ZONE, NAD 83 (2007)



SCOTS PLAINS UNIT No. 4
RECORDED AUGUST 28, 1963 AS DOCUMENT NO. R63-30616

SCOTS PLAINS UNIT No. 1
RECORDED SEPTEMBER 21, 1960 AS DOCUMENT NO. 980491

LANE LONGWOOD
RECORDED APRIL 1, 1971 AS DOCUMENT NO. R71-12298

F.A.P. 338 ILLINOIS ROUTE 59
DEDICATED BY DOCUMENT 312/310 RECORDED MAY 12, 1931 (100' R.O.W.)

THIS IS TO CERTIFY THAT WE, MIDWEST TECHNICAL CONSULTANTS, INC., AN ILLINOIS PROFESSIONAL DESIGN FIRM NUMBER 184-002917, HAVE SURVEYED THE PLAT OF HIGHWAYS SHOWN HEREON BETWEEN SECTION 9, TOWNSHIP 38 NORTH, RANGE 9 EAST, AND SECTION 10, TOWNSHIP 38 NORTH, RANGE 9 EAST OF THE THIRD PRINCIPAL MERIDIAN, DUPAGE COUNTY, THAT THE SURVEY IS TRUE AND COMPLETE AS SHOWN TO THE BEST OF MY KNOWLEDGE AND BELIEF, THAT THE PLAT CORRECTLY REPRESENTS SAID SURVEY, THAT ALL MONUMENTS FOUND AND ESTABLISHED ARE OF PERMANENT QUALITY AND OCCUPY THE POSITIONS SHOWN THEREON AND THAT THE MONUMENTS ARE SUFFICIENT TO ENABLE THE SURVEY TO BE RETRACED. THIS SURVEY CONFORMS TO THE CURRENT ILLINOIS MINIMUM STANDARDS FOR A BOUNDARY SURVEY, MADE FOR THE DEPARTMENT OF TRANSPORTATION, STATE OF ILLINOIS.

DATED AT NAPERVILLE, ILLINOIS THIS _____ DAY OF _____, 2010 A.D.

RUSSELL W. OLSEN
ILLINOIS PROFESSIONAL LAND SURVEYOR NO. 035-002718
LICENSE EXPIRES NOVEMBER 30, 2012
THIS PROFESSIONAL SERVICE CONFORMS TO THE CURRENT ILLINOIS MINIMUM STANDARDS FOR A BOUNDARY SURVEY.

Midwest Technical Consultants, Inc.
1805 N. MILL STREET, SUITE L
Naperville, ILLINOIS 60563
(630)505-0101

NOTES:
1) ALL COORDINATES SHOWN HEREON ARE PROJECT. ALL DISTANCES SHOWN HEREON ARE GROUND.
2) BEARINGS SHOWN HEREON ARE BASED ON ILLINOIS STATE PLANE COORDINATE SYSTEM EAST ZONE, NAD 83, (2007).
3) THE COMBINATION FACTOR USED FOR THIS PROJECT = 0.99994777.
4) COORDINATE CONVERSION
NAD83 (2007) STATE PLANE COORDINATES TO PROJECT COORDINATES:
A) DIVIDE THE STATE PLANE NAD83 GRID COORDINATES BY THE COMBINATION FACTOR.
B) SUBTRACT 1,000,000.00 FROM THESE NORTHINGS AND EASTINGS.
PROJECT COORDINATES TO NAD83 (2007) STATE PLANE COORDINATES:
A) ADD 1,000,000.00 TO THE PROJECT NORTHINGS AND EASTINGS.
B) MULTIPLY THESE COORDINATES BY THE COMBINATION FACTOR.
5) THE NGS MONUMENT HELD FOR THIS PROJECT IS FIRST ORDER P.I.D. AA3730.

SEE SHEET 14B
SEE SHEET 15B
SEE SHEET 36B

PARCEL NUMBER	OWNER	TOTAL HOLDING ACRES	PART TAKEN ACRES	REMAINDER ACRES	PREV. DED. ACRES	EASEMENT ACRES	EASEMENT PURPOSE	PERMANENT TAX INDEX NUMBER	PROPERTY ACQUIRED BY
1HJ0118	CAROLYN R. EVANS AND NANCY E. EVANS IN JOINT TENANCY	0.320	0.008 (340 SQ.FT)	0.312				07-09-211-012	
1HJ0119	STEPHEN J. GROJEAN AND TONI L. GROJEAN, HUSBAND AND WIFE, IN JOINT TENANCY	0.241	0.007 (293 SQ.FT)	0.234				07-09-211-011	
1HJ0120	MARTIN GONZALEZ, UNMARRIED	0.245	0.011	0.234				07-09-211-009	
1HJ0121	LUIS GUILLEZ, A MARRIED MAN	0.250	0.012	0.238				07-09-211-005	
1HJ0125	COUNTY OF DuPAGE	0.249	0.012	0.237				07-09-211-004	
1HJ0126TE	THOMAS A. HAMMERSCHMIDT AND LESLIE A. HAMMERSCHMIDT HIS WIFE, IN JOINT TENANCY	0.250				0.012	GRADING	07-09-211-003	
1HJ0127TE	JEFFERY A. COX AND DEBORAH J. COX, HIS WIFE, IN JOINT TENANCY	0.250				0.012	GRADING	07-09-211-002	
1HJ0128			0.008 (360 SQ.FT)						
1HJ0128TE-A	ZORAN STEVANOVIC	0.333		0.325		A=0.004 (186 SQ.FT)	GRADING	07-09-211-001	
1HJ0128TE-B						B=0.005 (235 SQ.FT)	GRADING		

RECEIVED
FEB 01 2011
PLATS & LEGALS

NAD83 (2007) S.P.	N. 1,869,327.5048
	E. 1,023,602.1293
PROJECT (GROUND)	N. 869,425.1449
	E. 23,655.5948

PLAT OF HIGHWAYS
STATE OF ILLINOIS
DEPARTMENT OF TRANSPORTATION
F.A.P. 338 ILLINOIS ROUTE 59
SECTION FERRY RD. TO AURORA AVE. DUPAGE COUNTY
PROJECT: ROUTE 59 JOB NO. R-91-035-09
STATION 4014+07.73 TO STATION 4023+00
SCALE: 1" = 40' SHEET 35B OF 47

BUREAU OF LAND ACQUISITION
201 WEST CENTER COURT
SCHAMBURG, ILLINOIS 60196-1096