

ALIGNMENT DATA

105	N 861030.08 E 19109.05	108	N 861585.69 E 19132.24	111	N 862377.43 E 19118.50
106	N 861239.18 E 19115.88	109	N 861987.31 E 19134.67	112	N 862579.66 E 19113.25
107	N 861428.54 E 19127.11	110	N 862188.79 E 19129.44	113	N 863887.16 E 19121.15

PROP. CURVE PRIL59-1
PI STA. = 3957+38.84
 $\Delta = 3^\circ 02' 36''$ (RT)
D = 1° 27' 16"
R = 3,939.05'
T = 104.64'
L = 209.23'
E = 1.39'
SE = NORMAL CROWN
P.C. STA. = 3956+34.20
P.T. STA. = 3958+43.43

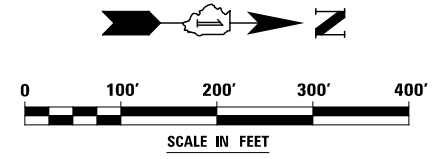
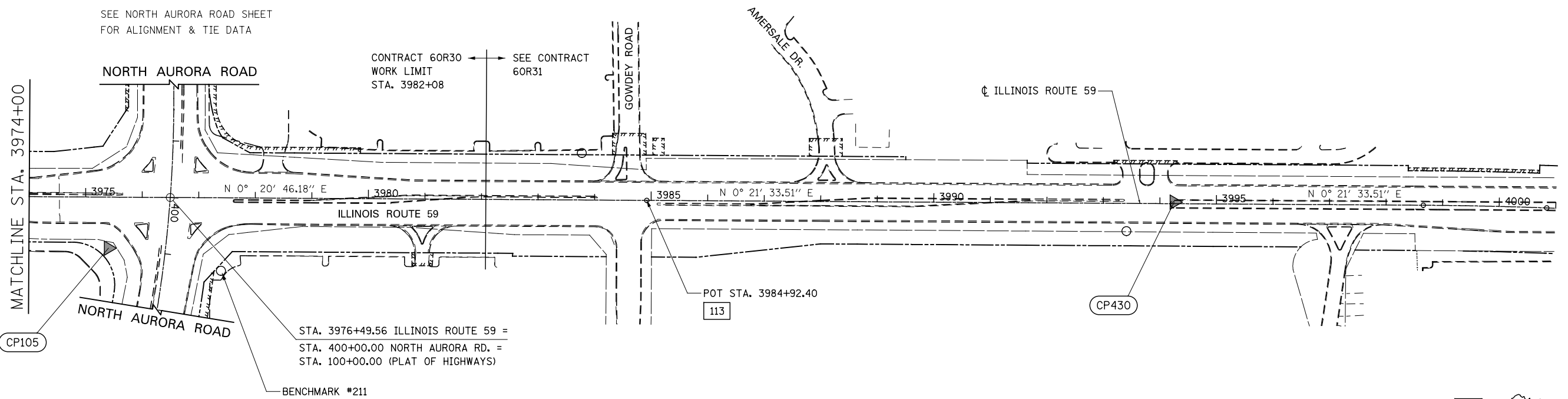
PROP. CURVE PRIL59-2
PI STA. = 3961+11.77
 $\Delta = 3^\circ 02' 50''$ (LT)
D = 1° 56' 16"
R = 2,956.67'
T = 78.64'
L = 157.25'
E = 1.05'
SE = NORMAL CROWN
P.C. STA. = 3960+33.13
P.T. STA. = 3961+90.37

PROP. CURVE PRIL59-3
PI STA. = 3966+92.83
 $\Delta = 3^\circ 39' 58''$ (LT)
D = 1° 49' 07"
R = 3,150.48'
T = 100.83'
L = 201.59'
E = 1.61'
SE = NORMAL CROWN
P.C. STA. = 3965+92.00
P.T. STA. = 3967+93.59

PROP. CURVE PRIL59-4
PI STA. = 3970+83.74
 $\Delta = 3^\circ 39' 58''$ (RT)
D = 1° 48' 43"
R = 3,162.19'
T = 101.20'
L = 202.33'
E = 1.62'
SE = NORMAL CROWN
P.C. STA. = 3969+82.54
P.T. STA. = 3971+84.87

NOTE:

SEE NORTH AURORA ROAD SHEET
FOR ALIGNMENT & TIE DATA



DESIGNED	PJO	REVISED	-
DRAWN	KES	REVISED	-
CHECKED	JCM	REVISED	-
DATE	12/14/2012	REVISED	-

STATE OF ILLINOIS
DEPARTMENT OF TRANSPORTATION

ALIGNMENT, BENCHMARKS, AND TIES

SCALE: AS SHOWN SHEET NO. 2 OF 8 SHEETS STA. 3947+00 TO STA. 4001+00

F.A.P. RTE.	SECTION	COUNTY	TOTAL SHEETS	SHEET NO.
338	(112 & 113) WRS-7	DUPAGE	1156	88
CONTRACT NO. 60R30				
ILLINOIS FED. AID PROJECT				